

DLD Polyclonal Antibody

Catalog No: tcba9332



Available Sizes

Size: 50ul

Size: 100ul

Size: 200ul



Specifications

Application:

WB,IHC

Research Area:

Cancer,Cell Biology,Metabolism,Amino Acids,

Species Reactivity:

Human,Mouse

Host Species:

Rabbit

Isotype:

IgG

Form:

Liquid

Storage Buffer:

Buffer: PBS with 0.02% sodium azide, 50% glycerol, pH7.3.

Recommended Dilution:

WB 1:500 - 1:2000

IHC 1:50 - 1:200

Storage Instruction:

Store at -20°C. Avoid freeze / thaw cycles.

Alternative Names:

DLDD;DLDH;E3;GCSL;LAD;PHE3

SwissProt:

P09622

Gene ID:

1738 (human);

Calculated Molecular Weight:

43kDa/49kDa/54kDa

Purification:

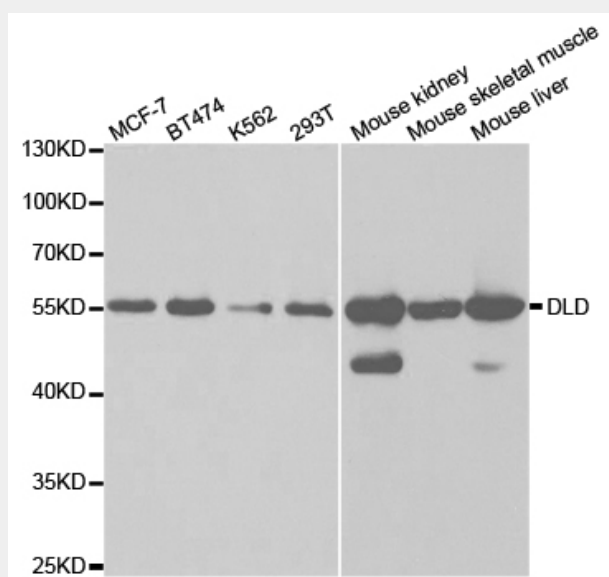
Affinity purification

Cellular Location:

Mitochondrion matrix,

Product Description

This gene encodes a member of the class-I pyridine nucleotide-disulfide oxidoreductase family. The encoded protein has been identified as a moonlighting protein based on its ability to perform mechanistically distinct functions. In homodimeric form, the encoded protein functions as a dehydrogenase and is found in several multi-enzyme complexes that regulate energy metabolism. However, as a monomer, this protein can function as a protease. Mutations in this gene have been identified in patients with E3-deficient maple syrup urine disease and lipoamide dehydrogenase deficiency. Alternative splicing results in multiple transcript variants.



Western blot analysis of extracts of various cell lines, using DLD antibody at 1:1000 dilution.

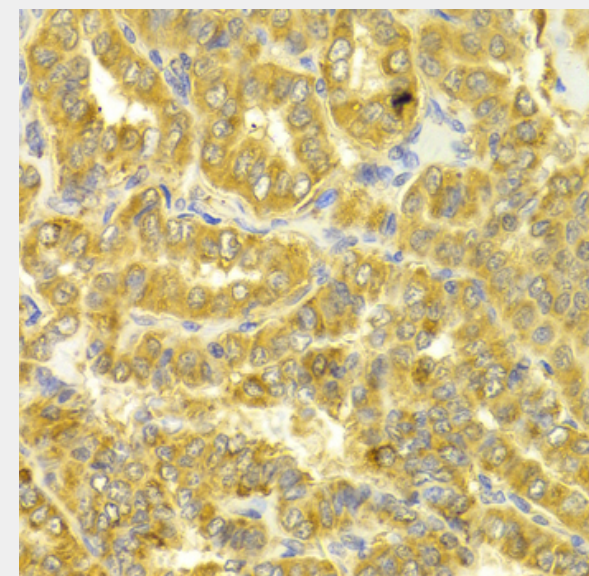
Secondary antibody: HRP Goat Anti-Rabbit IgG (H+L) at 1:10000 dilution.

Lysates/proteins: 25ug per lane.

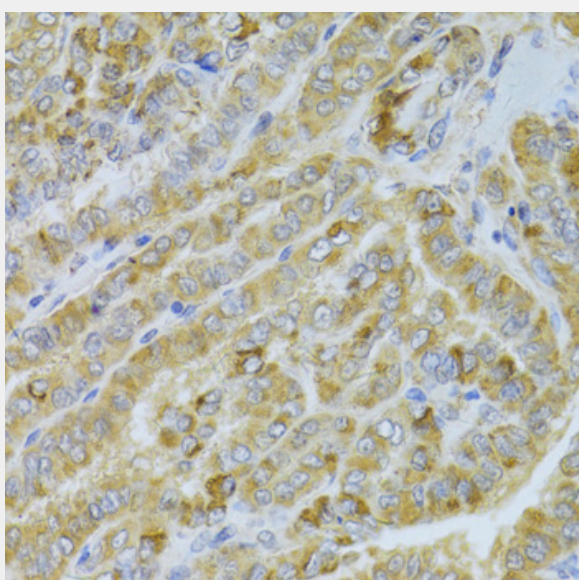
Blocking buffer: 3% nonfat dry milk in TBST.

Detection: ECL Basic Kit.

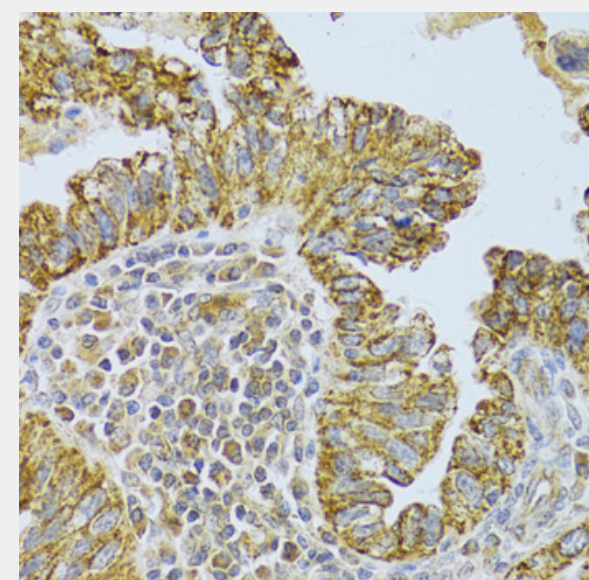
Exposure time: 15s.



Immunohistochemistry of paraffin-embedded human thyroid cancer using DLD Antibody at dilution of 1:100 (40x lens).



Immunohistochemistry of paraffin-embedded human thyroid cancer using DLD Antibody at dilution of 1:100 (40x lens).



Immunohistochemistry of paraffin-embedded human endometrial cancer using DLD Antibody at dilution of 1:100 (40x lens).

All products are for RESEARCH USE ONLY. Not for diagnostic & therapeutic purposes!