

ID3 Polyclonal Antibody

Catalog No: tcba9305



Available Sizes

Size: 50ul

Size: 100ul

Size: 200ul



Specifications

Application:

WB,IHC,IF

Research Area:

Cancer,Stem cells,Apoptosis,Cell Biology,Immunology,Epigenetics,

Species Reactivity:

Human,Mouse,Rat

Host Species:

Rabbit

Isotype:

IgG

Form:

Liquid

Storage Buffer:

Buffer: PBS with 0.02% sodium azide, 50% glycerol, pH7.3.

Recommended Dilution:

WB 1:500 - 1:2000

IHC 1:50 - 1:200

IF 1:50 - 1:100

Storage Instruction:

Store at -20°C. Avoid freeze / thaw cycles.

Alternative Names:

bHLHb25;HEIR-1

SwissProt:

Q02535

Gene ID:

3399 (human);

Calculated Molecular Weight:

12kDa

Purification:

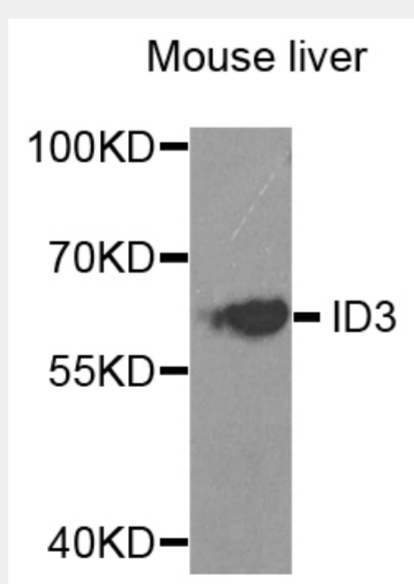
Affinity purification

Cellular Location:

Nucleus,

Product Description

The protein encoded by this gene is a helix-loop-helix (HLH) protein that can form heterodimers with other HLH proteins. However, the encoded protein lacks a basic DNA-binding domain and therefore inhibits the DNA binding of any HLH protein with which it interacts.

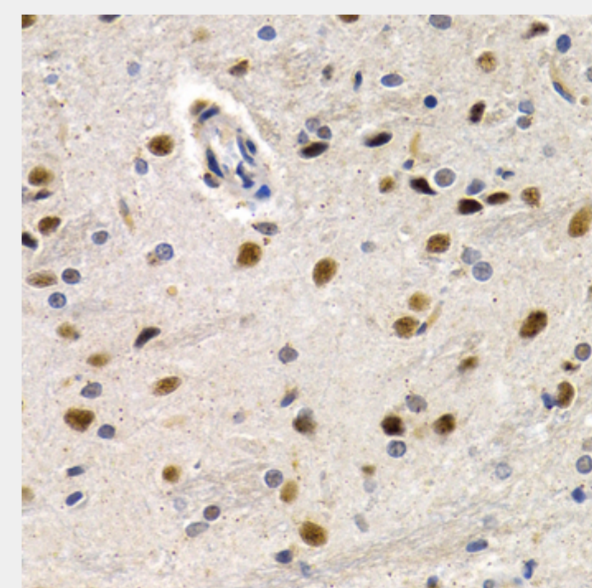


Western blot analysis of extracts of mouse liver, using ID3 antibody at 1:1000 dilution.

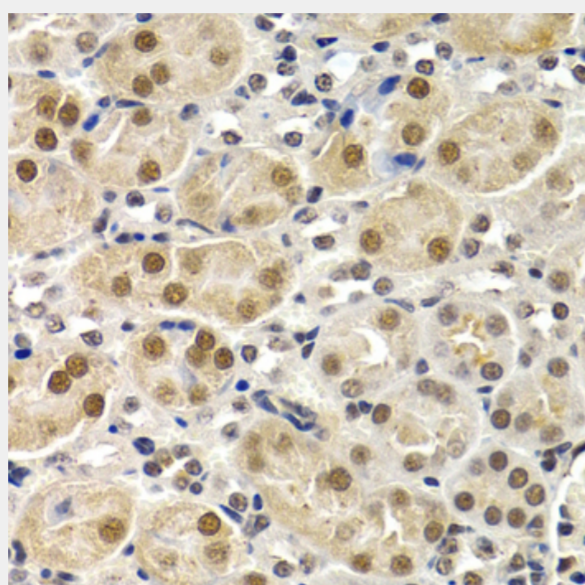
Secondary antibody: HRP Goat Anti-Rabbit IgG (H+L) at 1:10000 dilution.

Lysates/proteins: 25ug per lane.

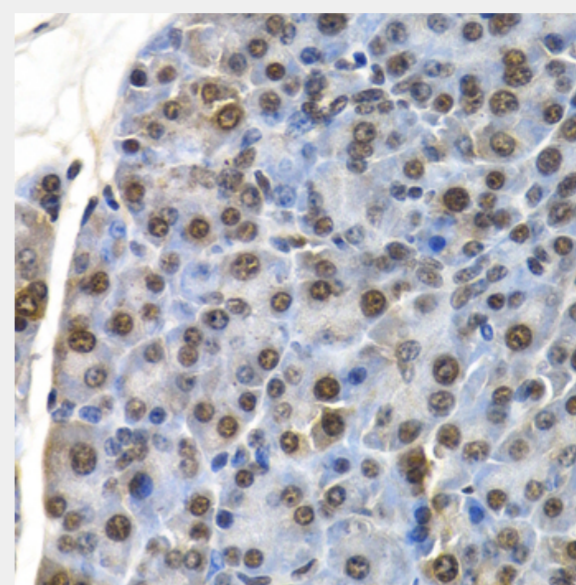
Blocking buffer: 3% nonfat dry milk in TBST.



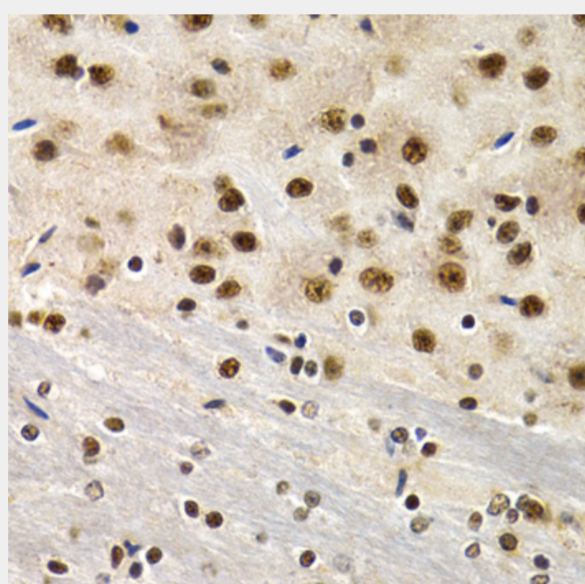
Immunohistochemistry of paraffin-embedded rat brain using ID3 antibody at dilution of 1:200 (40x lens).



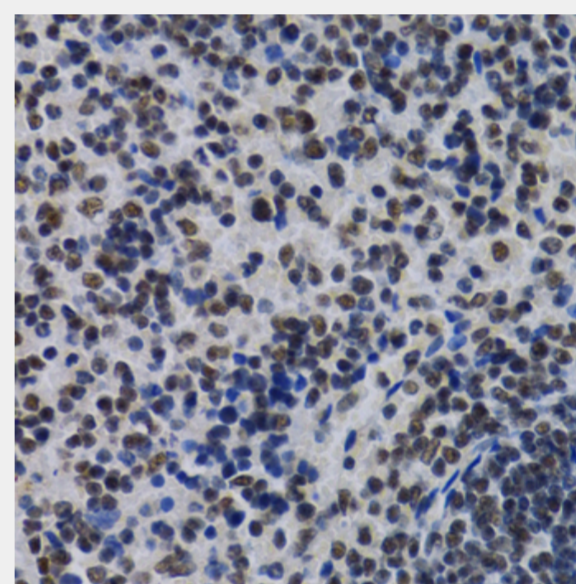
Immunohistochemistry of paraffin-embedded mouse kidney using ID3 antibody at dilution of 1:200 (40x lens).



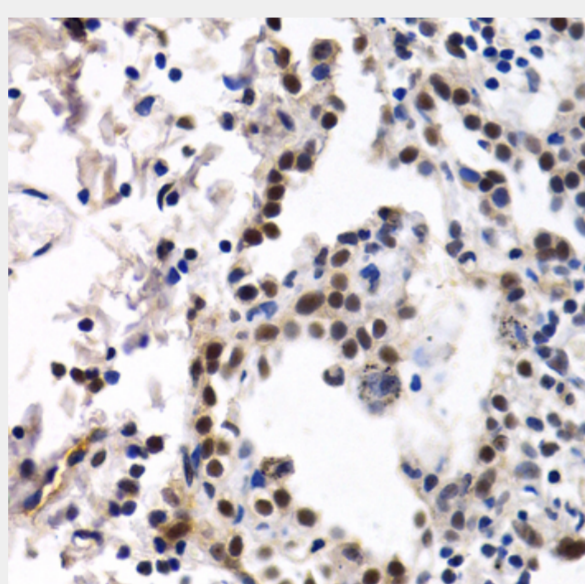
Immunohistochemistry of paraffin-embedded mouse pancreas using ID3 antibody at dilution of 1:200 (40x lens).



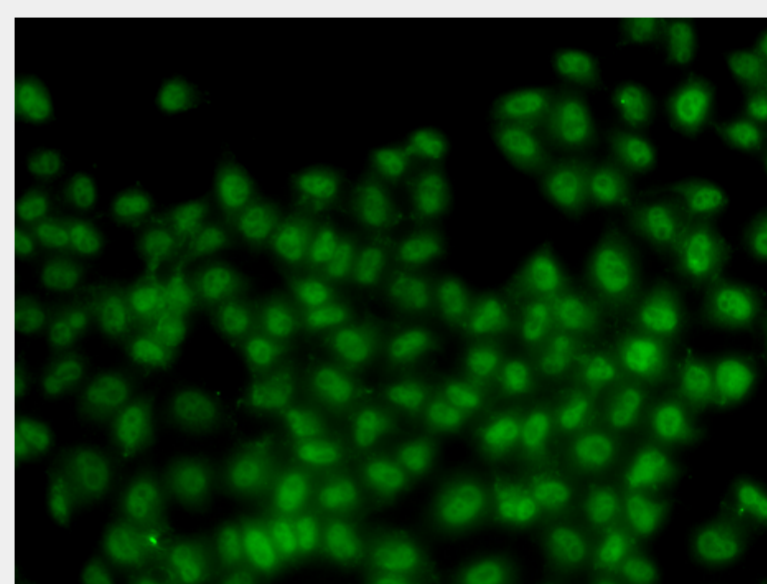
Immunohistochemistry of paraffin-embedded mouse brain using ID3 antibody at dilution of 1:200 (40x lens).



Immunohistochemistry of paraffin-embedded mouse spleen using ID3 antibody at dilution of 1:200 (40x lens).



Immunohistochemistry of paraffin-embedded human lung cancer using ID3 antibody at dilution of 1:200 (40x lens).



Immunofluorescence analysis of HeLa cells using ID3 antibody.

All products are for RESEARCH USE ONLY. Not for diagnostic & therapeutic purposes!