

NONO Polyclonal Antibody

Catalog No: tcba9219



Available Sizes

Size: 50ul

Size: 100ul

Size: 200ul



Specifications

Application:

WB,IHC,IF

Research Area:

RNA Binding Protein(RBP),

Species Reactivity:

Human,Mouse,Rat

Host Species:

Rabbit

Isotype:

IgG

Form:

Liquid

Storage Buffer:

Buffer: PBS with 0.02% sodium azide, 50% glycerol, pH7.3.

Recommended Dilution:

WB 1:500 - 1:2000

IHC 1:50 - 1:200

IF 1:50 - 1:200

Storage Instruction:

Store at -20°C. Avoid freeze / thaw cycles.

Alternative Names:

MRXS34;NMT55;NRB54;P54;P54NRB;PPP1R114

SwissProt:

Q15233

Gene ID:

4841 (human);

Calculated Molecular Weight:

43kDa/54kDa

Purification:

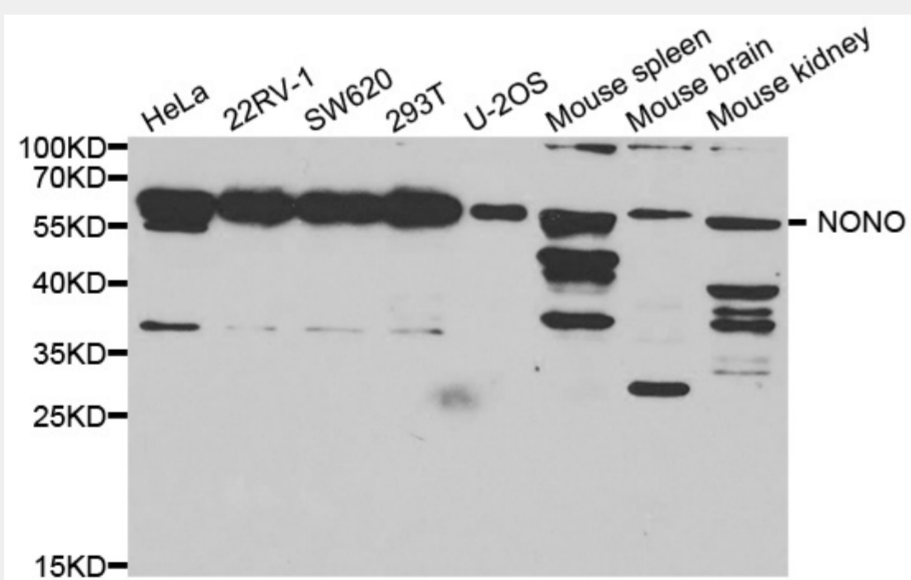
Affinity purification

Cellular Location:

Nucleus,Nucleus speckle,nucleolus,

Product Description

This gene encodes an RNA-binding protein which plays various roles in the nucleus, including transcriptional regulation and RNA splicing. A rearrangement between this gene and the transcription factor E3 gene has been observed in papillary renal cell carcinoma. Alternatively spliced transcript variants have been described. Pseudogenes exist on Chromosomes 2 and 16.



Western blot analysis of extracts of various cell lines, using Nono antibody at 1:1000 dilution.

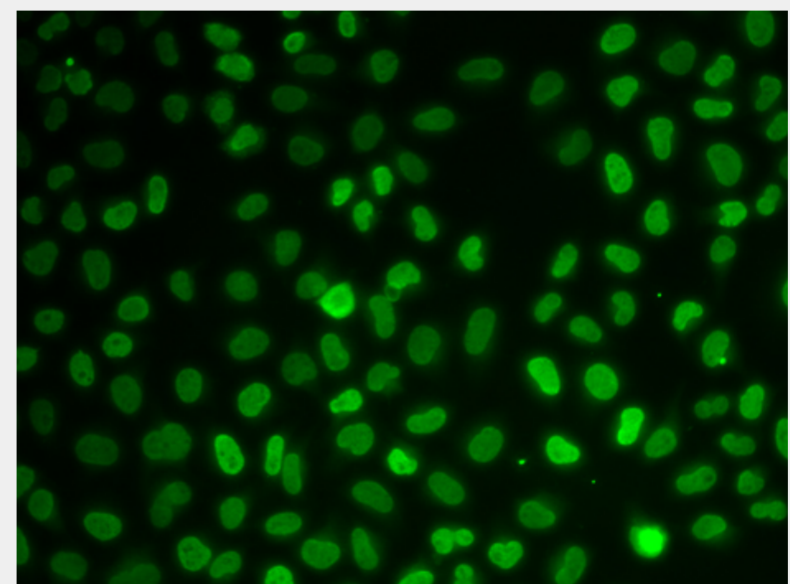
Secondary antibody: HRP Goat Anti-Rabbit IgG (H+L) at 1:10000 dilution.

Lysates/proteins: 25ug per lane.

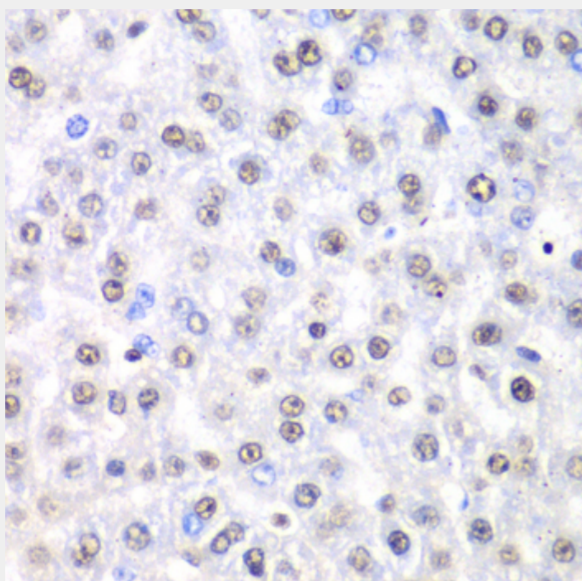
Blocking buffer: 3% nonfat dry milk in TBST.

Detection: ECL Basic Kit.

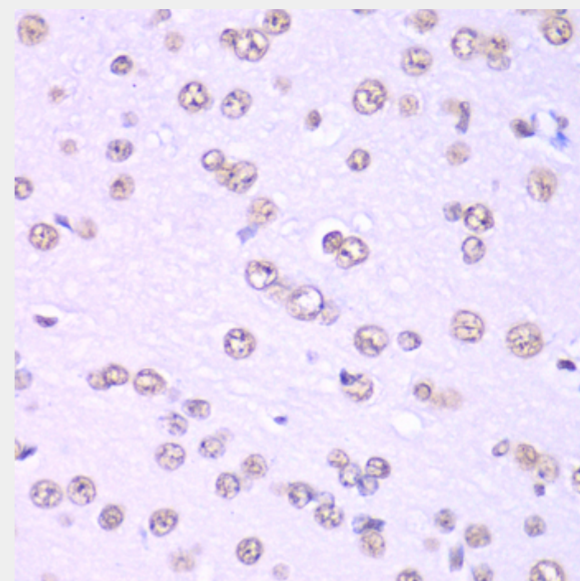
Exposure time: 10s.



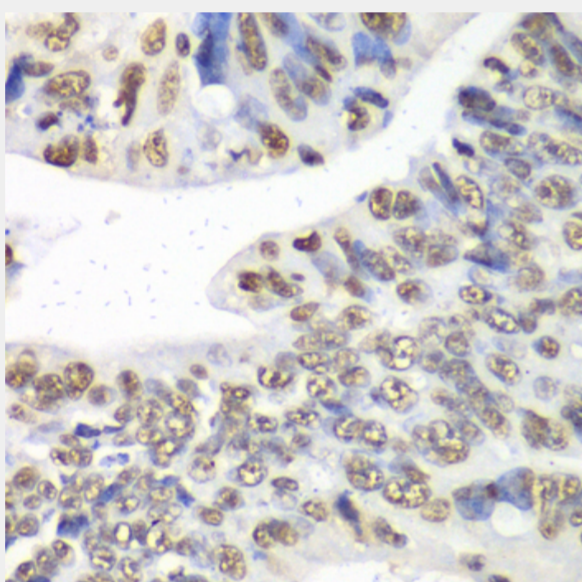
Immunofluorescence analysis of U2OS cells using Nono antibody.



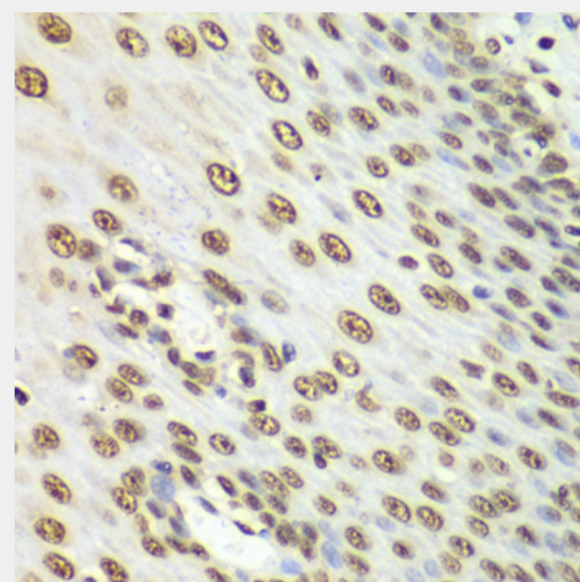
Immunohistochemistry of paraffin-embedded rat liver using Nono Antibody at dilution of 1:100 (40x lens).



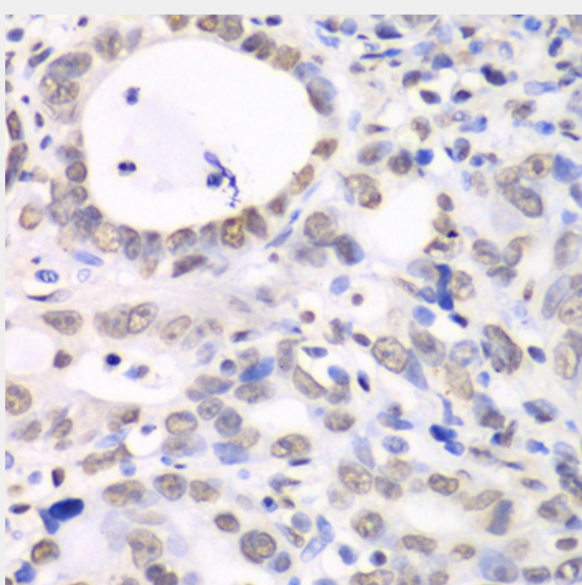
Immunohistochemistry of paraffin-embedded rat brain using Nono Antibody at dilution of 1:100 (40x lens).



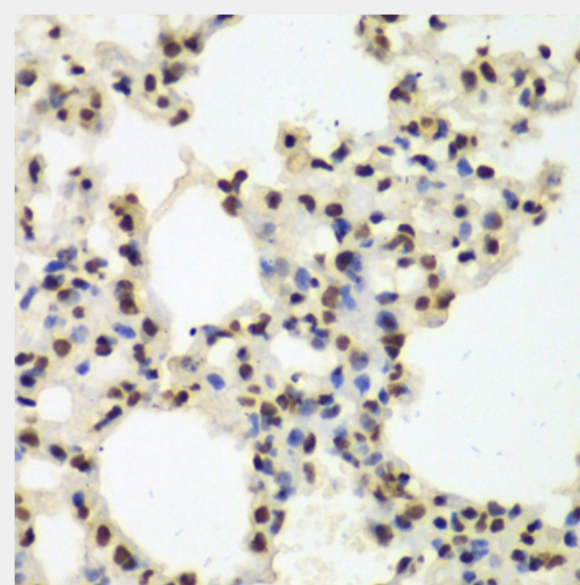
Immunohistochemistry of paraffin-embedded human colon using Nono Antibody at dilution of 1:100 (40x lens).



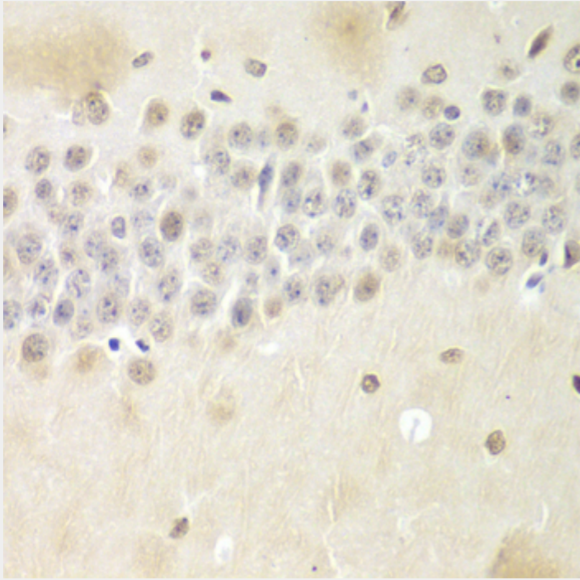
Immunohistochemistry of paraffin-embedded human esophagus using Nono Antibody at dilution of 1:100 (40x lens).



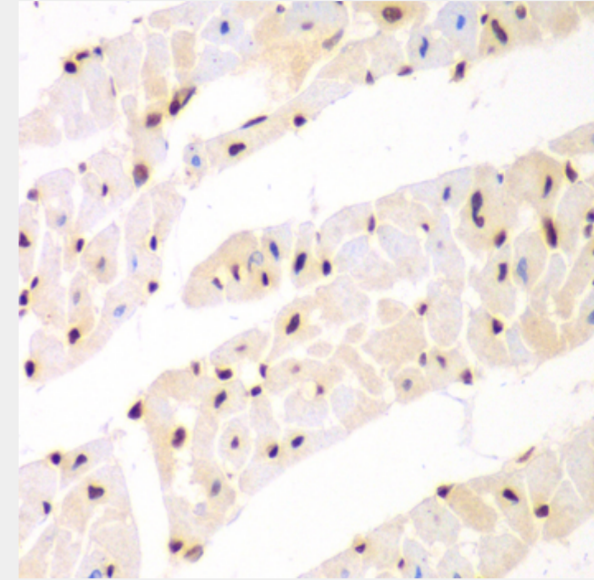
Immunohistochemistry of paraffin-embedded human gastric cancer using Nono Antibody at dilution of 1:100 (40x lens).



Immunohistochemistry of paraffin-embedded mouse lung using Nono Antibody at dilution of 1:100 (40x lens).



Immunohistochemistry of paraffin-embedded mouse brain using Nono Antibody at dilution of 1:100 (40x lens).



Immunohistochemistry of paraffin-embedded mouse heart using Nono Antibody at dilution of 1:100 (40x lens).

All products are for RESEARCH USE ONLY. Not for diagnostic & therapeutic purposes!