

Polyclonal Antibody to A Disintegrin And Metalloprotease 10 (ADAM10)

Catalog No: tcua6200



Available Sizes

Size: 20ul

Size: 100ul

Size: 200ul



Specifications

Application:

WB; IHC; ICC; IP.

Species Reactivity:

Homo sapiens (Human)

Host Species:

Rabbit

Immunogen / Amino acids:

Recombinant A Disintegrin And Metalloprotease 10 (ADAM10)

Conjugation:

Unconjugated

Clonality:

Polyclonal

Form:

Liquid

Storage Buffer:

0.01M PBS, pH7.4, containing 0.05% Proclin-300, 50% glycerol.

Recommended Dilution:

Western blotting: 1-5ug/ml

Immunocytochemistry in formalin fixed cells: 5-20ug/ml

Immunohistochemistry in formalin fixed frozen section: 5-20ug/ml

Immunohistochemistry in paraffin section: 5-20ug/ml

Enzyme-linked Im

Alternative Names:

CD156-C; CD156c; MADM; Kuz; CDw156; Kuzbanian protein homolog; Mammalian disintegrin-metalloprotease

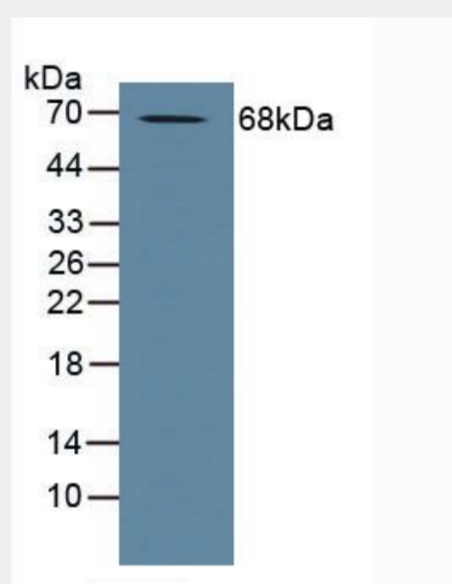


Figure. Western Blot; Sample: Human Placenta Tissue.)

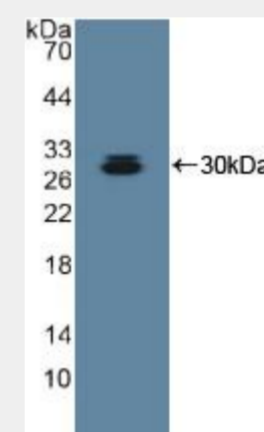


Figure. Western Blot; Sample: Recombinant ADAM10, Human.)

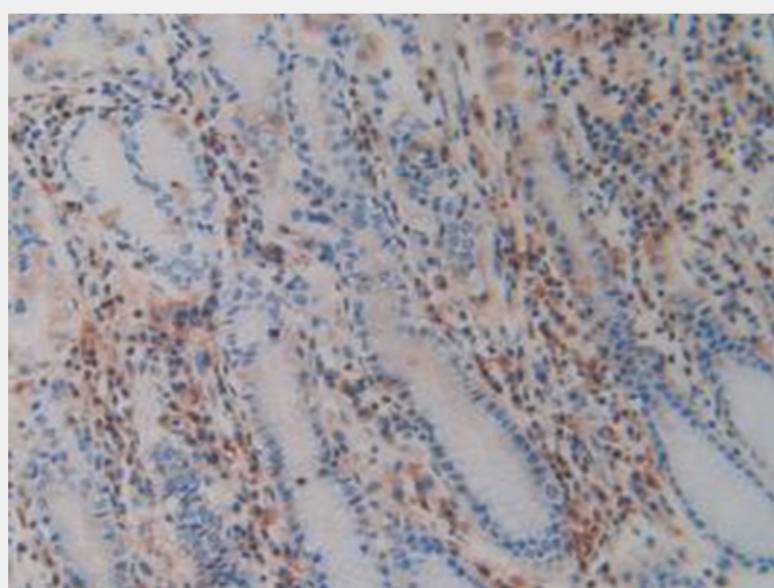


Figure. DAB staining on IHC-P;
Samples: Human Stomach Tissue.)

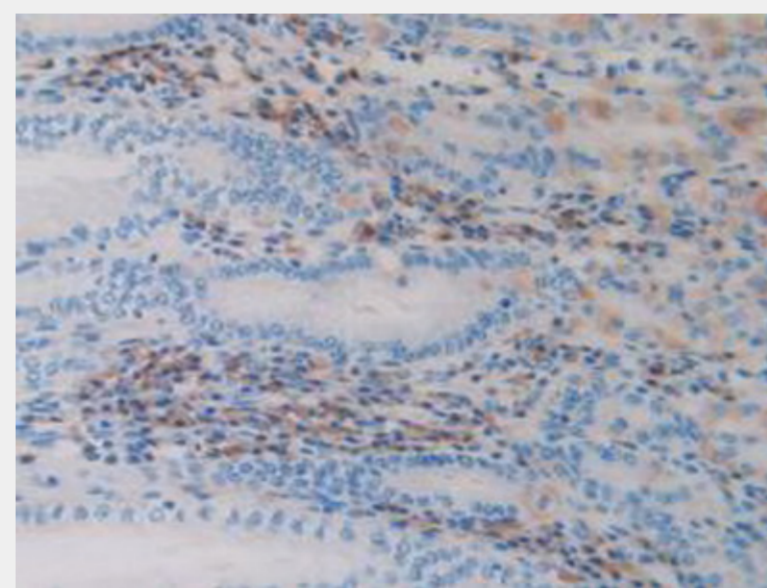


Figure. DAB staining on IHC-P;
Samples: Human Stomach Cancer Tissue.)

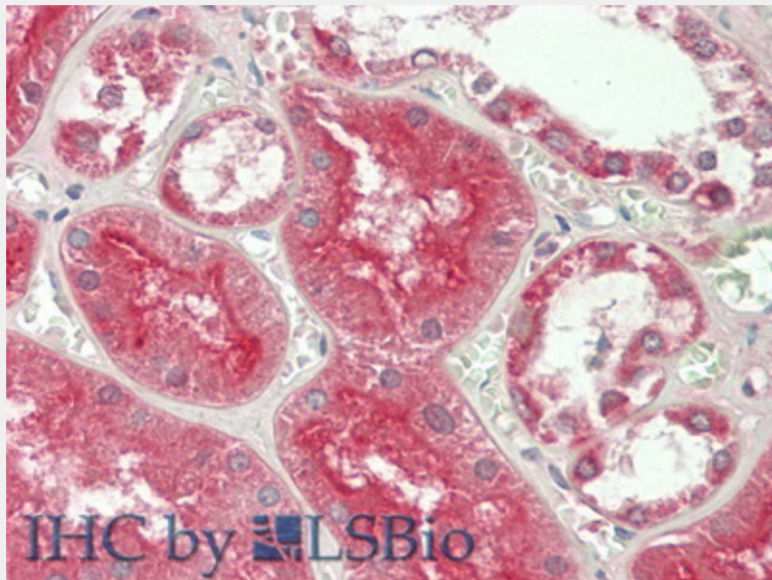


Figure. HE staining on IHC-P; Samples: Human Kidney Tissue.)

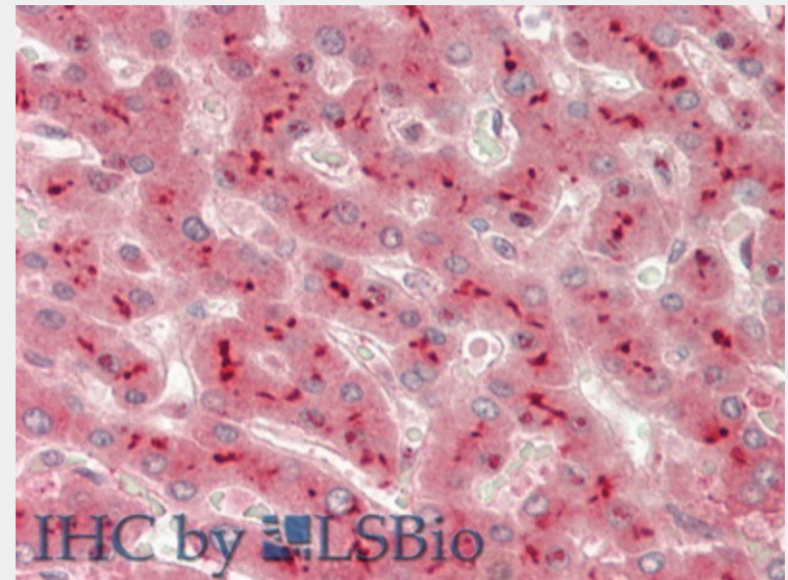


Figure. HE staining on IHC-P; Samples: Human Liver Tissue.)

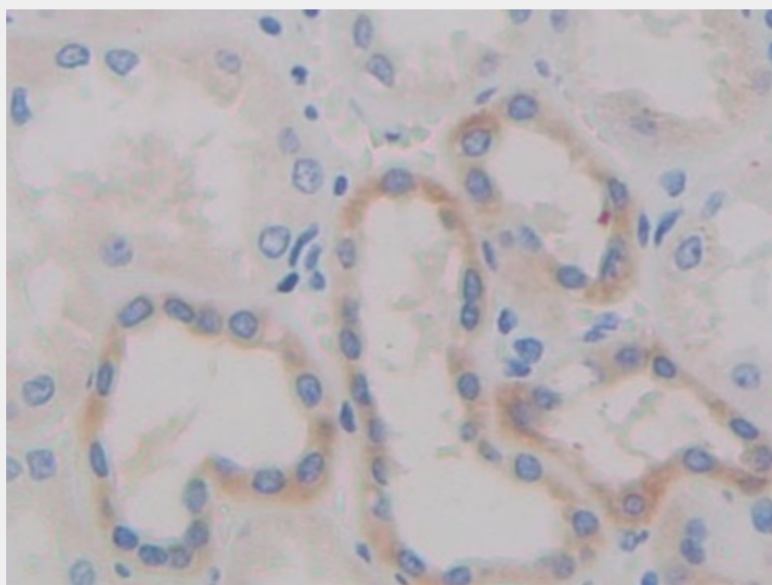


Figure. DAB staining on IHC-P; Samples: Human Kidney Tissue.)

All products are for RESEARCH USE ONLY. Not for diagnostic & therapeutic purposes!