

CREB3L1 Polyclonal Antibody

Catalog No: tcba9128



Available Sizes

Size: 50ul

Size: 100ul

Size: 200ul



Specifications

Application:

WB,IHC,FC

Research Area:

Neuroscience,Neurodegeneration,Epigenetics,

Species Reactivity:

Human,Mouse

Host Species:

Rabbit

Isotype:

IgG

Form:

Liquid

Storage Buffer:

Buffer: PBS with 0.02% sodium azide, pH7.3.

Recommended Dilution:

WB 1:200 - 1:2000

IHC 1:20 - 1:200

FC 1:20 - 1:50

Storage Instruction:

Store at 4°C. Avoid freeze / thaw cycles.

Alternative Names:

OASIS

SwissProt:

Q96BA8

Gene ID:

90993 (human);

Calculated Molecular Weight:

47kDa/57kDa

Purification:

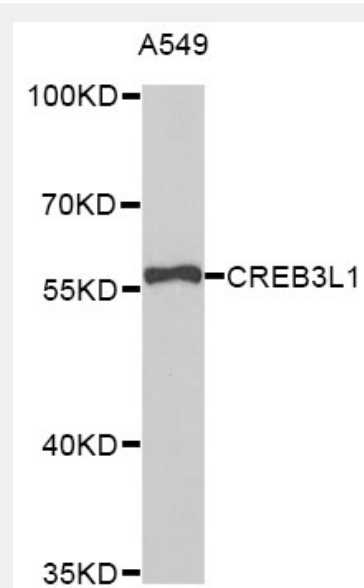
Affinity purification

Cellular Location:

Endoplasmic reticulum membrane,Nucleus,Single-pass type II membrane protein,

Product Description

The protein encoded by this gene is normally found in the membrane of the endoplasmic reticulum (ER). However, upon stress to the ER, the encoded protein is cleaved and the released cytoplasmic transcription factor domain translocates to the nucleus. There it activates the transcription of target genes by binding to box-B elements.



Western blot analysis of extracts of A-549 cells, using CREB3L1 antibody.
Secondary antibody: HRP Goat Anti-Rabbit IgG (H+L) at 1:10000 dilution.
Lysates/proteins: 25ug per lane.
Blocking buffer: 3% nonfat dry milk in TBST.

All products are for RESEARCH USE ONLY. Not for diagnostic & therapeutic purposes!