

NBR1 Polyclonal Antibody

Catalog No: tcba8520



Available Sizes

Size: 50ul

Size: 100ul

Size: 200ul



Specifications

Application:

WB,IHC,IF,IP

Research Area:

Cell Biology,

Species Reactivity:

Human,Mouse,Rat,Monkey

Host Species:

Rabbit

Isotype:

IgG

Form:

Liquid

Storage Buffer:

Buffer: PBS with 0.02% sodium azide, 50% glycerol, pH7.3.

Recommended Dilution:

WB 1:500 - 1:2000

IHC 1:50 - 1:200

IF 1:50 - 1:100

IP 1:20 - 1:50

Storage Instruction:

Store at -20°C. Avoid freeze / thaw cycles.

Alternative Names:

1A1-3B;IAI3B;M17S2;MIG19

SwissProt:

Q14596

Gene ID:

4077 (human);

Calculated Molecular Weight:

103kDa/107kDa

Purification:

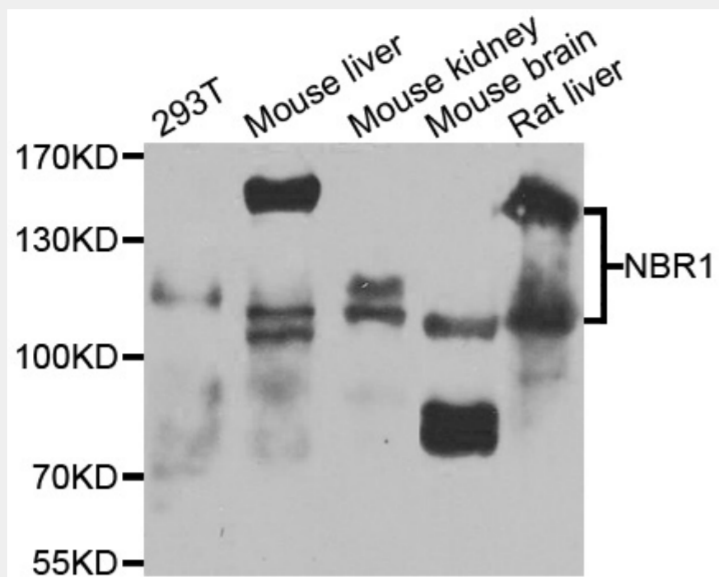
Affinity purification

Cellular Location:

Cytoplasm,Cytoplasmic vesicle,Lysosome,M line,autophagosome,myofibril,sarcomere,

Product Description

The protein encoded by this gene was originally identified as an ovarian tumor antigen monitored in ovarian cancer. The encoded protein contains a B-box/coiled-coil motif, which is present in many genes with transformation potential. It functions as a specific autophagy receptor for the selective autophagic degradation of peroxisomes by forming intracellular inclusions with ubiquitylated autophagic substrates. This gene is located on a region of chromosome 17q21.1 that is in close proximity to the BRCA1 tumor suppressor gene. Alternative splicing of this gene results in multiple transcript variants.



Western blot analysis of extracts of various cell lines, using NBR1 antibody at 1:1000 dilution.

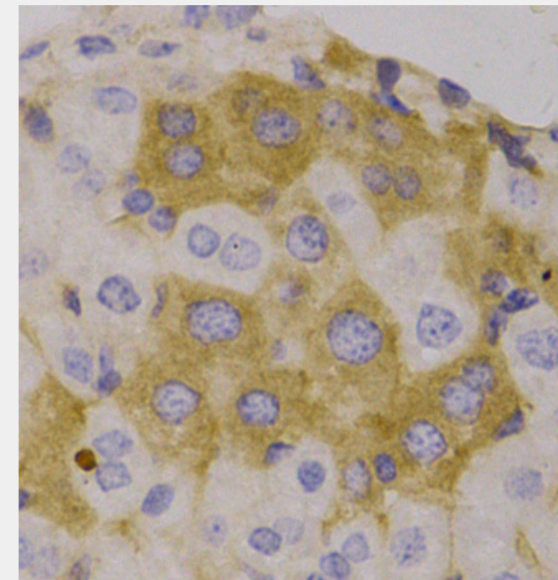
Secondary antibody: HRP Goat Anti-Rabbit IgG (H+L) at 1:10000 dilution.

Lysates/proteins: 25ug per lane.

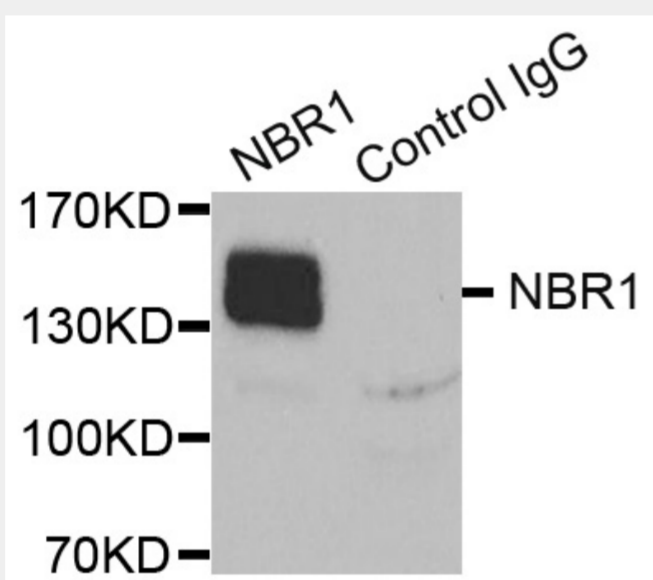
Blocking buffer: 3% nonfat dry milk in TBST.

Detection: ECL Basic Kit.

Exposure time: 90s.



Immunohistochemistry of paraffin-embedded human liver, using NBR1 antibody.



Immunoprecipitation analysis of extracts of K562 cells, using NBR1 antibody.

All products are for RESEARCH USE ONLY. Not for diagnostic & therapeutic purposes!