

NFKB2 Polyclonal Antibody

Catalog No: tcba8044



Available Sizes

Size: 50ul

Size: 100ul

Size: 200ul



Specifications

Application:

WB,IHC,IF

Research Area:

Cancer,Apoptosis,Cell Biology,NF-κB pathway,Epigenetics,

Species Reactivity:

Human,Mouse,Rat

Host Species:

Rabbit

Isotype:

IgG

Form:

Liquid

Storage Buffer:

Buffer: PBS with 0.02% sodium azide, 50% glycerol, pH7.3.

Recommended Dilution:

WB 1:500 - 1:2000

IHC 1:50 - 1:200

IF 1:50 - 1:200

Storage Instruction:

Store at -20°C. Avoid freeze / thaw cycles.

Alternative Names:

CVID10;H2TF1;LYT-10;LYT10;NF-kB2;p100;p49/p100;p52

SwissProt:

Q00653

Gene ID:

4791 (human);

Calculated Molecular Weight:

47kDa/96kDa

Purification:

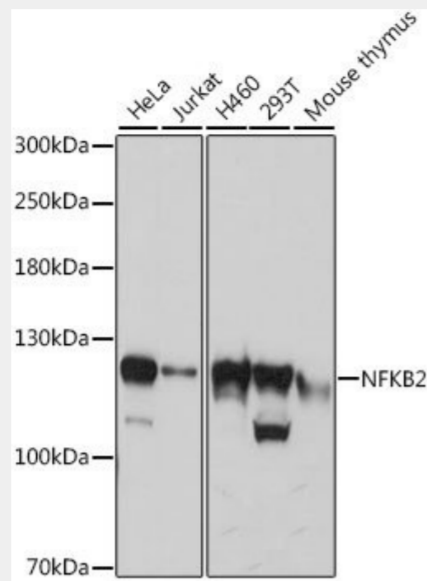
Affinity purification

Cellular Location:

Cytoplasm,Nucleus,

Product Description

This gene encodes a subunit of the transcription factor complex nuclear factor-kappa-B (NFkB). The NFkB complex is expressed in numerous cell types and functions as a central activator of genes involved in inflammation and immune function. The protein encoded by this gene can function as both a transcriptional activator or repressor depending on its dimerization partner. The p100 full-length protein is co-translationally processed into a p52 active form. Chromosomal rearrangements and translocations of this locus have been observed in B cell lymphomas, some of which may result in the formation of fusion proteins. There is a pseudogene for this gene on chromosome 18. Alternative splicing results in multiple transcript variants.



Western blot analysis of extracts of various cell lines, using NFKB2 antibody at 1:3000 dilution.

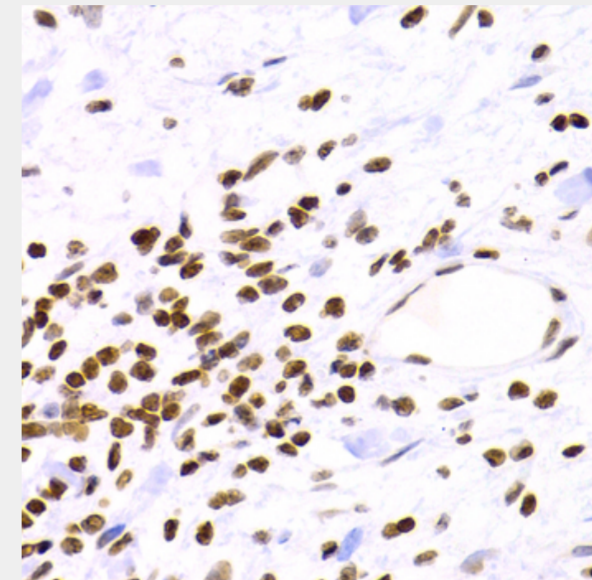
Secondary antibody: HRP Goat Anti-Rabbit IgG (H+L) at 1:10000 dilution.

Lysates/proteins: 25ug per lane.

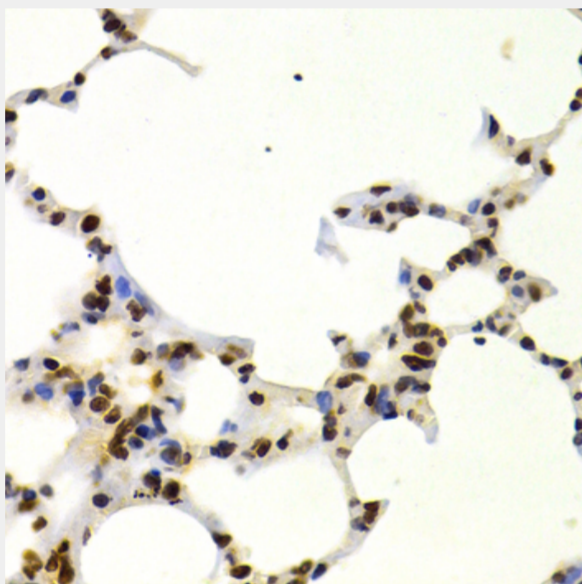
Blocking buffer: 3% nonfat dry milk in TBST.

Detection: ECL Basic Kit.

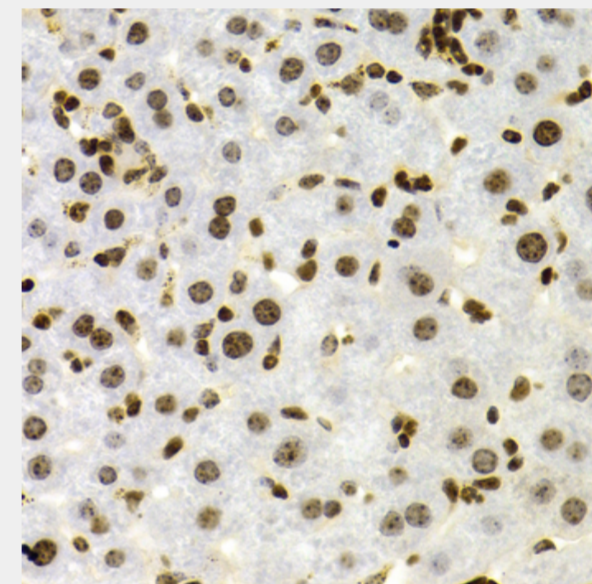
Exposure time: 30s.



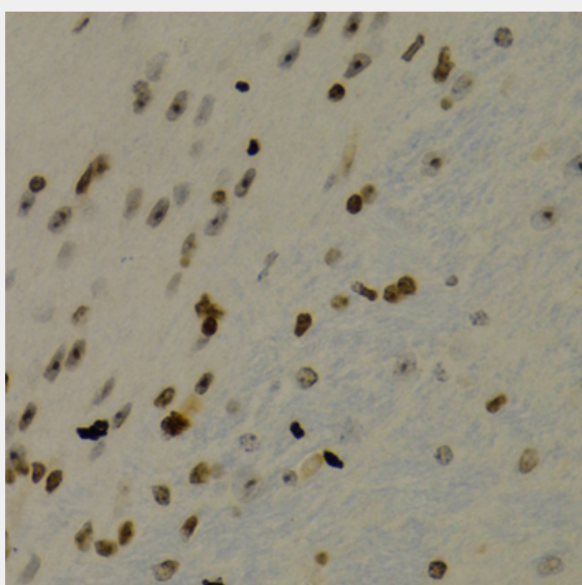
Immunohistochemistry of paraffin-embedded human gastric cancer using NFKB2 Antibody at dilution of 1:100 (40x lens).



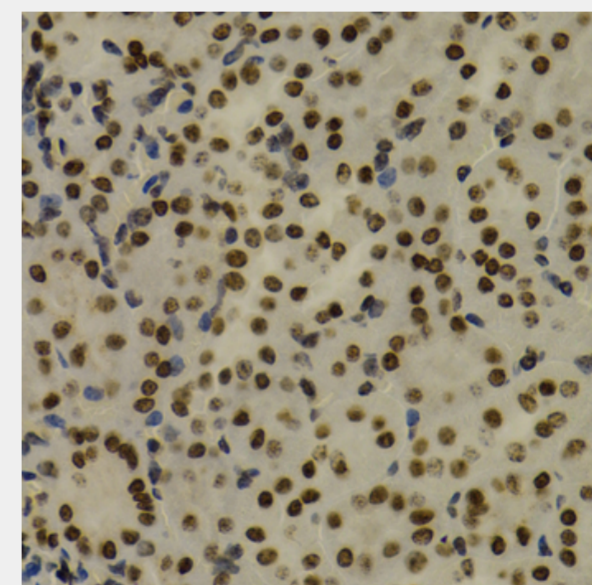
Immunohistochemistry of paraffin-embedded mouse lung using NFKB2 Antibody at dilution of 1:100 (40x lens).



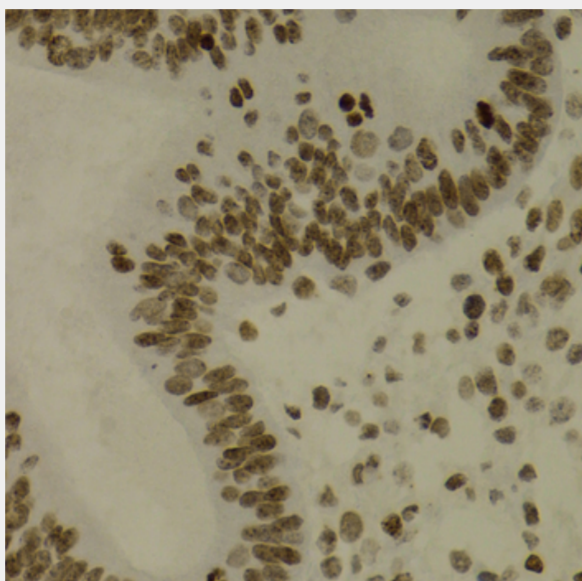
Immunohistochemistry of paraffin-embedded mouse liver using NFKB2 Antibody at dilution of 1:100 (40x lens).



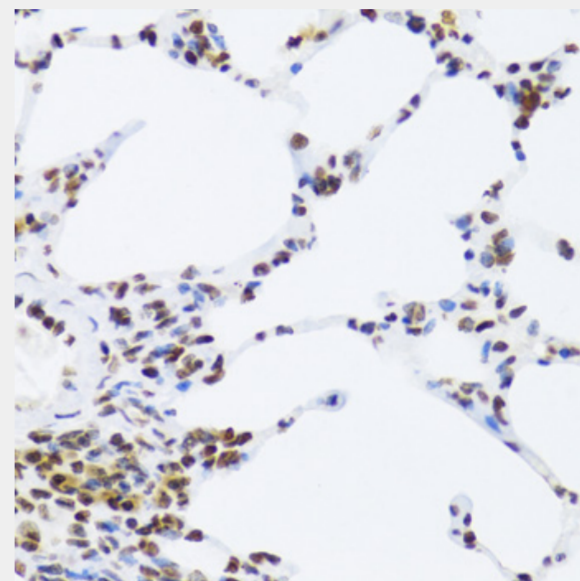
Immunohistochemistry of paraffin-embedded mouse brain using NFKB2 Antibody at dilution of 1:100 (40x lens).



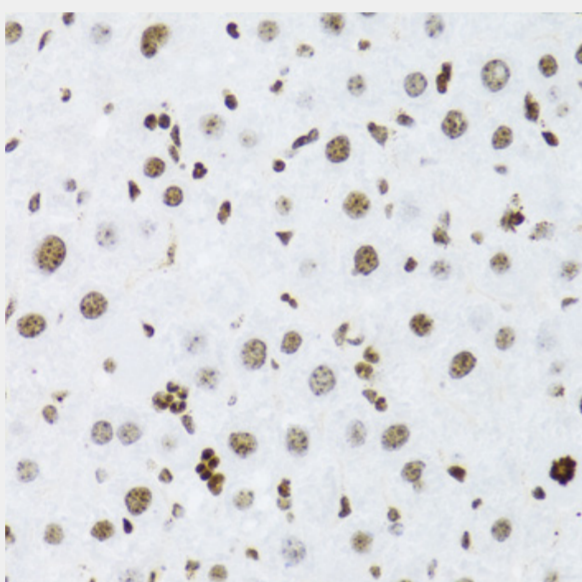
Immunohistochemistry of paraffin-embedded mouse kidney using NFKB2 Antibody at dilution of 1:100 (40x lens).



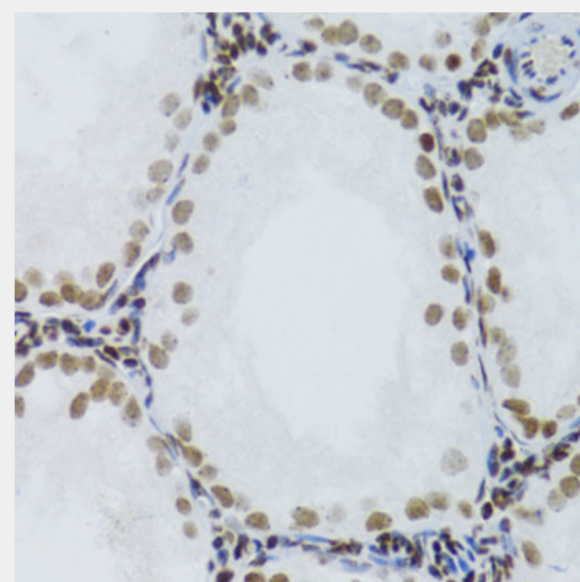
Immunohistochemistry of paraffin-embedded human uterine cancer using NFKB2 Antibody at dilution of 1:100 (40x lens).



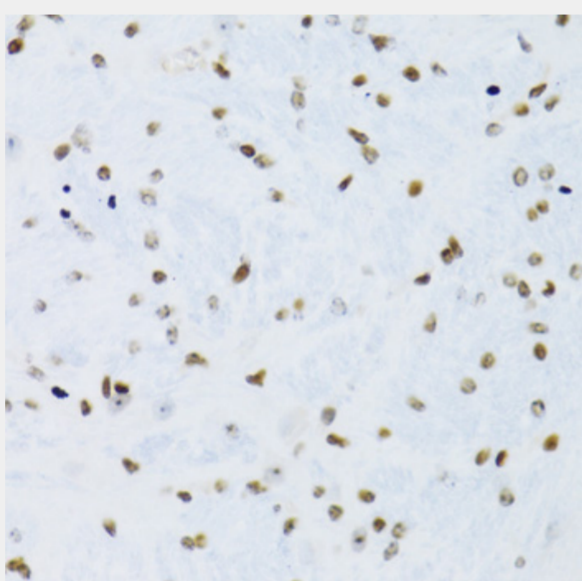
Immunohistochemistry of paraffin-embedded rat lung using NFKB2 Antibody at dilution of 1:100 (40x lens).



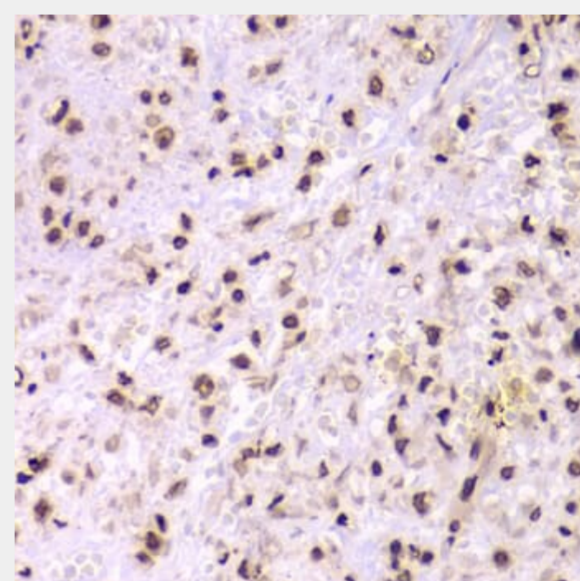
Immunohistochemistry of paraffin-embedded rat liver using NFKB2 Antibody at dilution of 1:100 (40x lens).



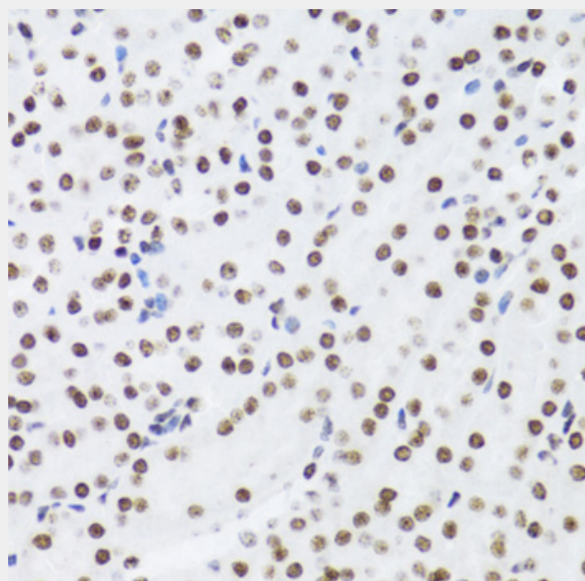
Immunohistochemistry of paraffin-embedded rat testis using NFKB2 Antibody at dilution of 1:100 (40x lens).



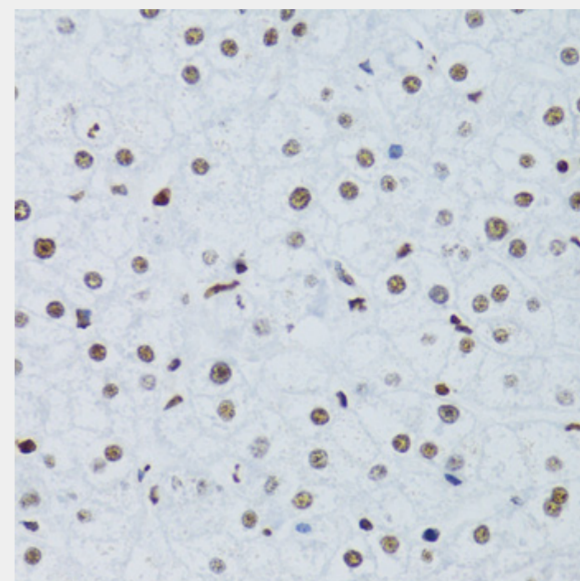
Immunohistochemistry of paraffin-embedded rat brain using NFKB2 Antibody at dilution of 1:100 (40x lens).



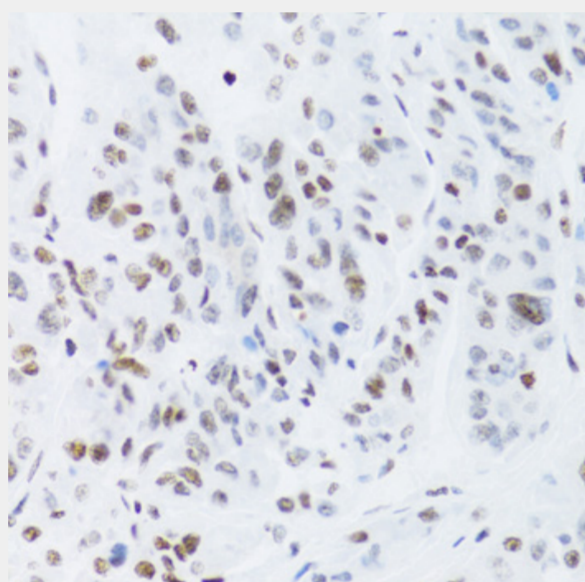
Immunohistochemistry of paraffin-embedded rat liver using NFKB2 Antibody at dilution of 1:100 (40x lens).



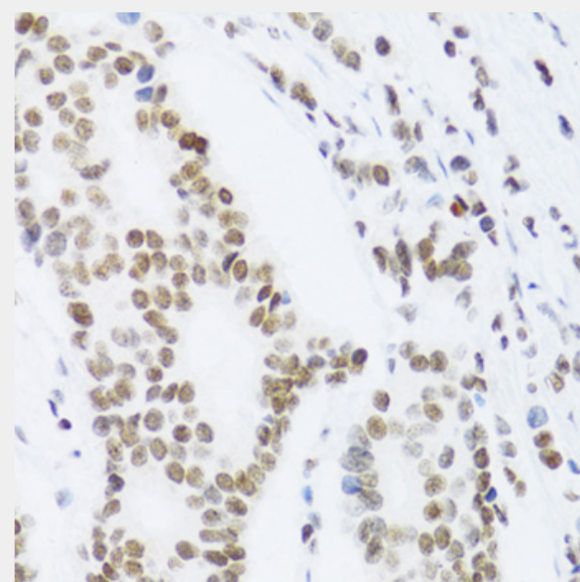
Immunohistochemistry of paraffin-embedded rat kidney using NFKB2 Antibody at dilution of 1:100 (40x lens).



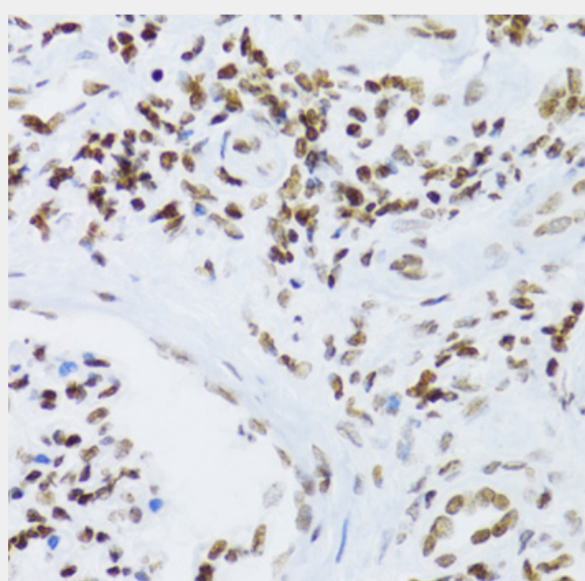
Immunohistochemistry of paraffin-embedded human liver using NFKB2 Antibody at dilution of 1:100 (40x lens).



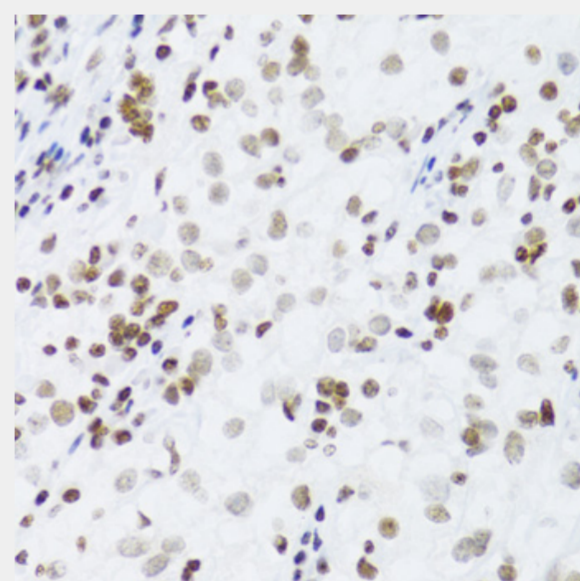
Immunohistochemistry of paraffin-embedded human liver cancer using NFKB2 Antibody at dilution of 1:100 (40x lens).



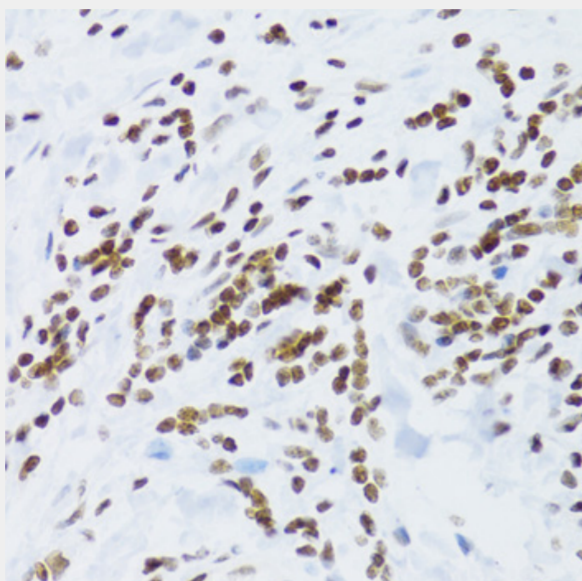
Immunohistochemistry of paraffin-embedded human breast cancer using NFKB2 Antibody at dilution of 1:100 (40x lens).



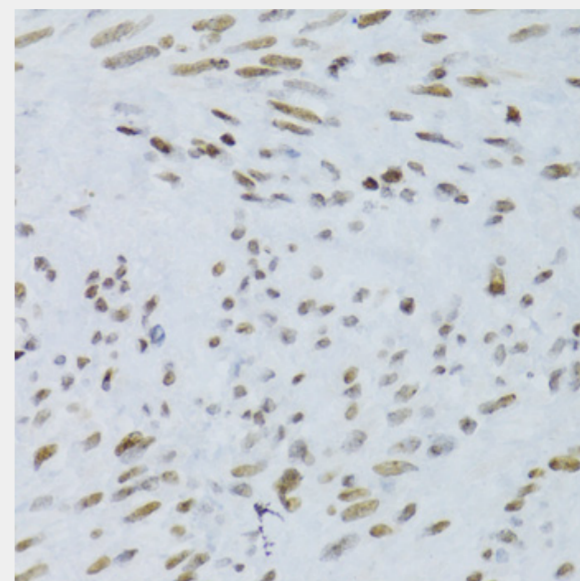
Immunohistochemistry of paraffin-embedded human kidney using NFKB2 Antibody at dilution of 1:100 (40x lens).



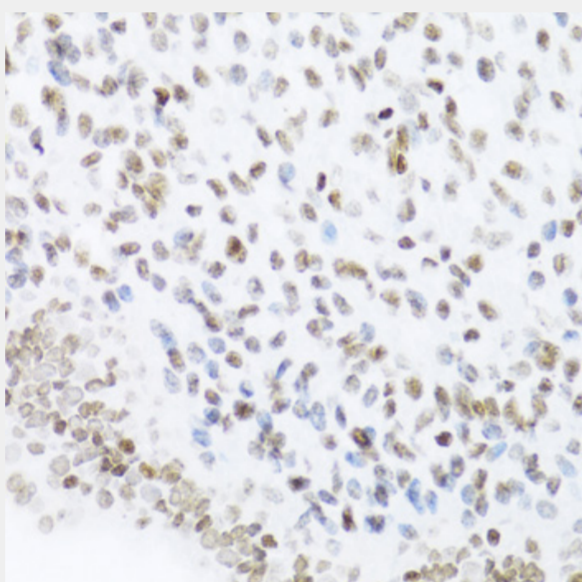
Immunohistochemistry of paraffin-embedded human kidney cancer using NFKB2 Antibody at dilution of 1:100 (40x lens).



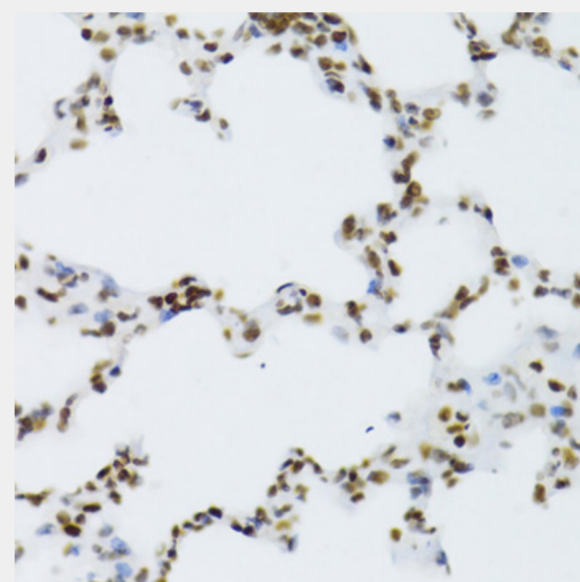
Immunohistochemistry of paraffin-embedded human gastric cancer using NFKB2 Antibody at dilution of 1:100 (40x lens).



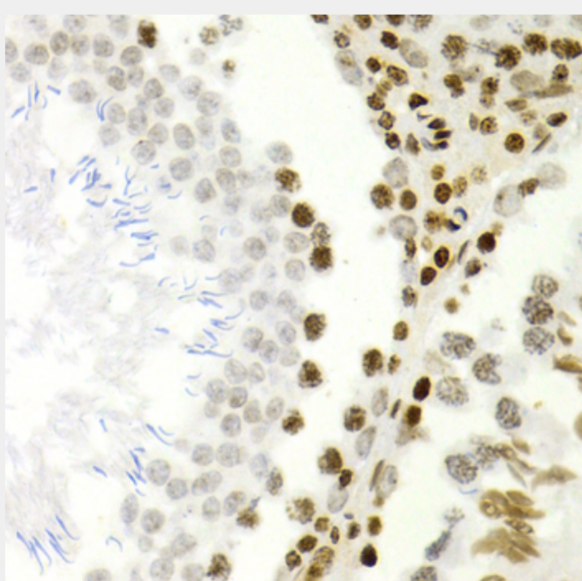
Immunohistochemistry of paraffin-embedded human uterus using NFKB2 Antibody at dilution of 1:100 (40x lens).



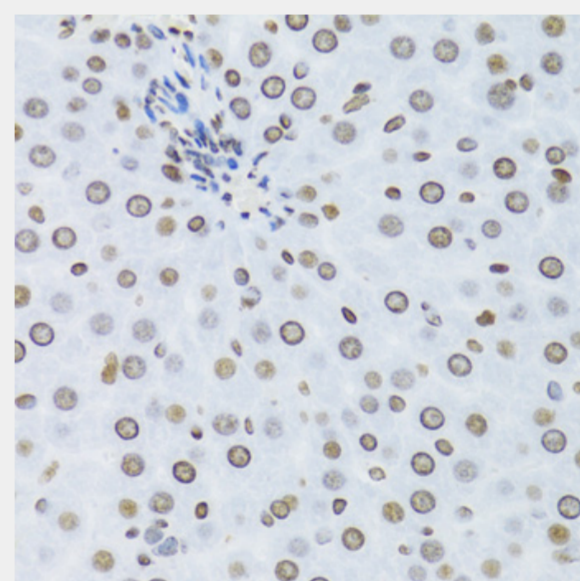
Immunohistochemistry of paraffin-embedded human uterine cancer using NFKB2 Antibody at dilution of 1:100 (40x lens).



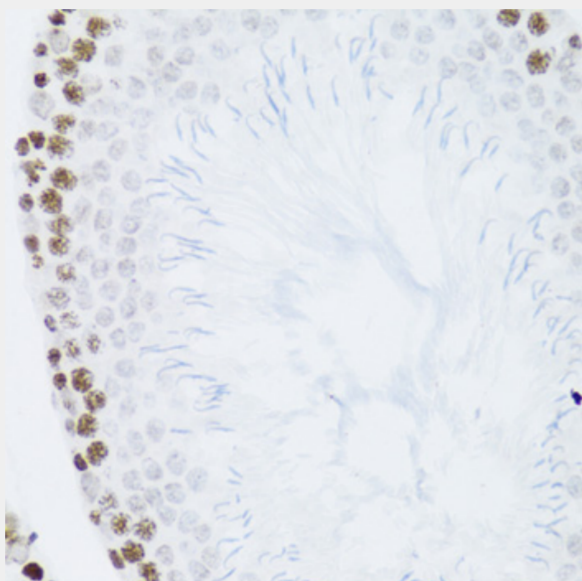
Immunohistochemistry of paraffin-embedded mouse lung using NFKB2 Antibody at dilution of 1:100 (40x lens).



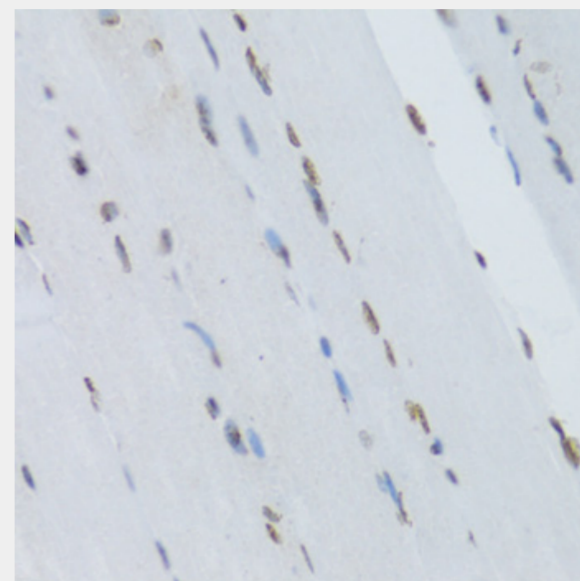
Immunohistochemistry of paraffin-embedded rat testis using NFKB2 Antibody at dilution of 1:100 (40x lens).



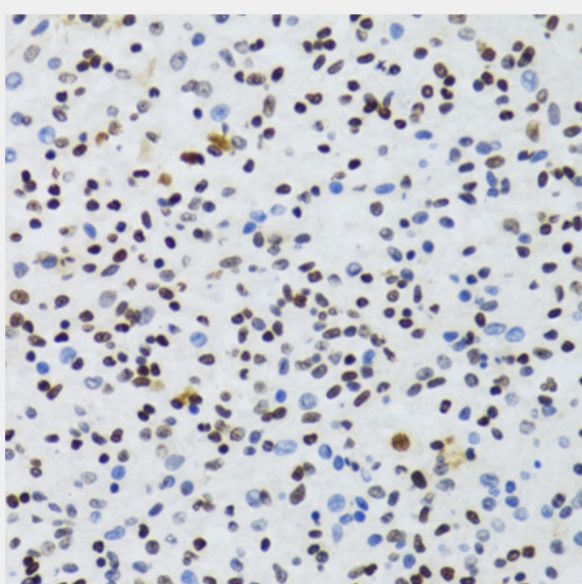
Immunohistochemistry of paraffin-embedded mouse liver using NFKB2 Antibody at dilution of 1:100 (40x lens).



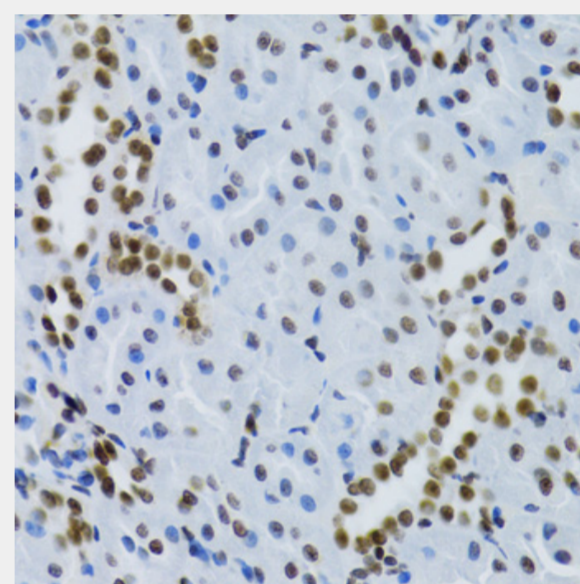
Immunohistochemistry of paraffin-embedded mouse testis using NFKB2 Antibody at dilution of 1:100 (40x lens).



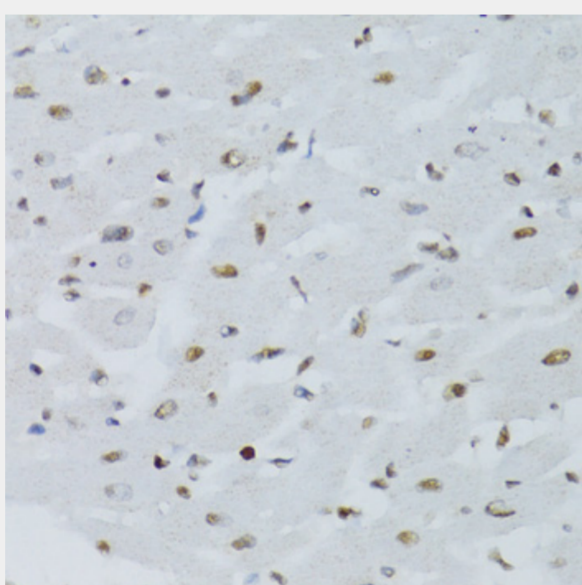
Immunohistochemistry of paraffin-embedded mouse skeletal muscle using NFKB2 Antibody at dilution of 1:100 (40x lens).



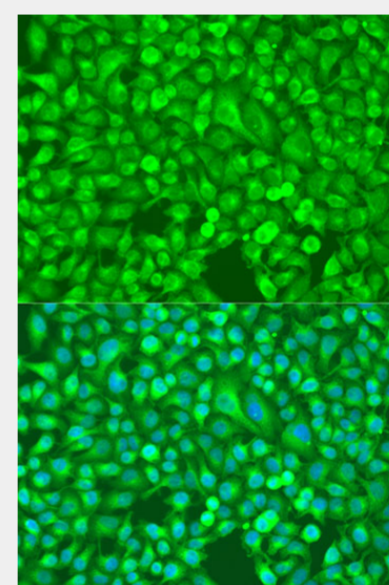
Immunohistochemistry of paraffin-embedded mouse brain using NFKB2 Antibody at dilution of 1:100 (40x lens).



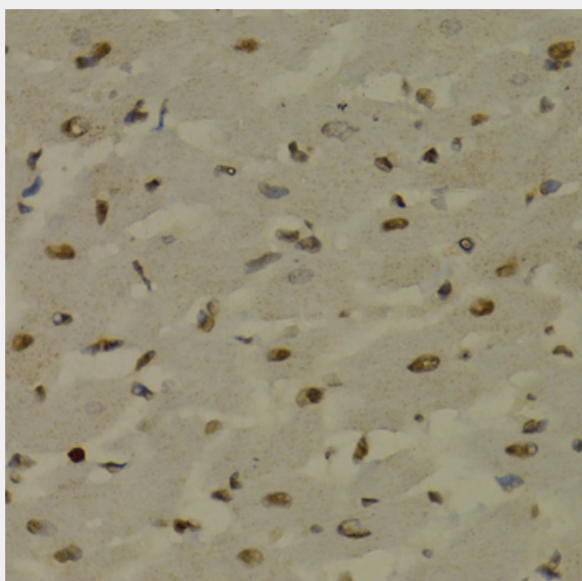
Immunohistochemistry of paraffin-embedded mouse kidney using NFKB2 Antibody at dilution of 1:100 (40x lens).



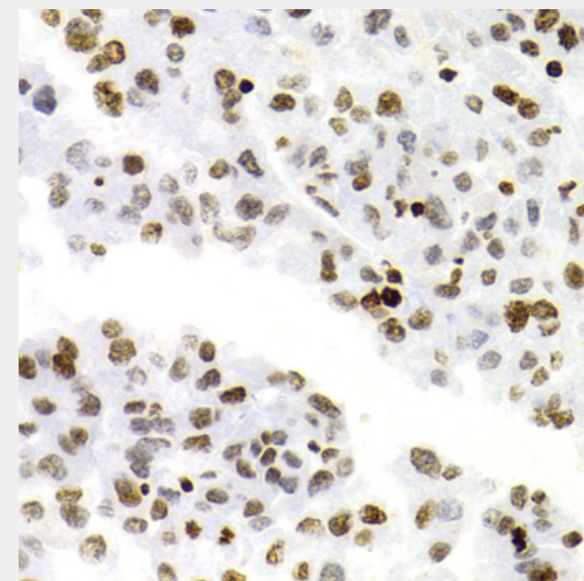
Immunohistochemistry of paraffin-embedded mouse heart using NFKB2 Antibody at dilution of 1:100 (40x lens).



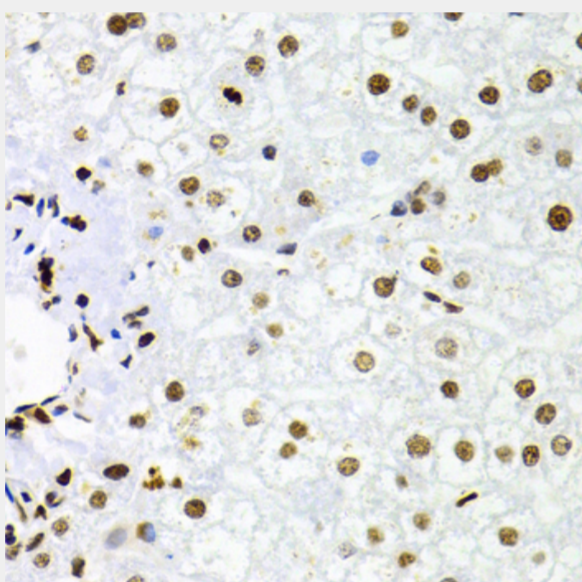
Immunofluorescence analysis of U2OS cells using NFKB2 antibody at dilution of 1:100. Blue: DAPI for nuclear staining.



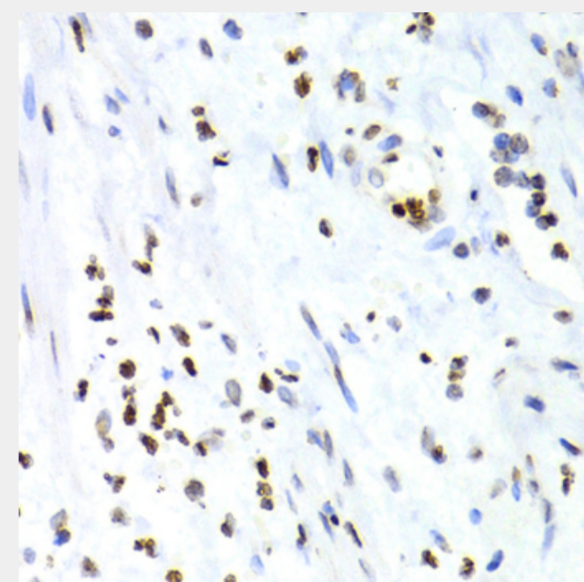
Immunohistochemistry of paraffin-embedded rat heart using NFKB2 Antibody at dilution of 1:100 (40x lens).



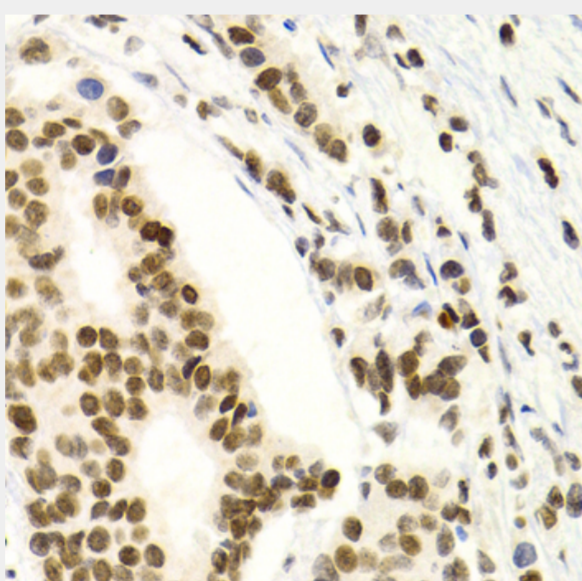
Immunohistochemistry of paraffin-embedded human liver cancer using NFKB2 Antibody at dilution of 1:100 (40x lens).



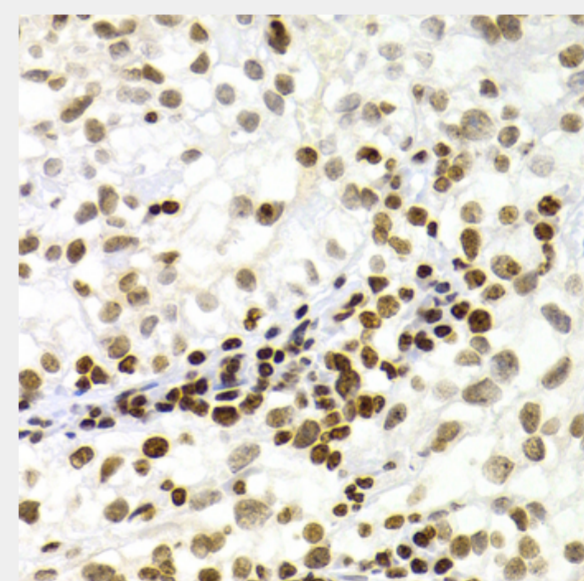
Immunohistochemistry of paraffin-embedded human liver injury using NFKB2 Antibody at dilution of 1:100 (40x lens).



Immunohistochemistry of paraffin-embedded human vermiform appendix using NFKB2 Antibody at dilution of 1:100 (40x lens).



Immunohistochemistry of paraffin-embedded human breast cancer using NFKB2 Antibody at dilution of 1:100 (40x lens).



Immunohistochemistry of paraffin-embedded human kidney cancer using NFKB2 Antibody at dilution of 1:100 (40x lens).

All products are for RESEARCH USE ONLY. Not for diagnostic & therapeutic purposes!