

# EDA Polyclonal Antibody

Catalog No: tcba7864



## Available Sizes

---

**Size:** 50ul

---

**Size:** 100ul

---

**Size:** 200ul

---



## Specifications

---

**Application:**

WB,IHC

---

**Research Area:**

Stem cells,

---

**Species Reactivity:**

Human,Mouse,Rat

---

**Host Species:**

Rabbit

---

**Isotype:**

IgG

---

**Form:**

Liquid

---

**Storage Buffer:**

Buffer: PBS with 0.02% sodium azide, 50% glycerol, pH7.3.

---

**Recommended Dilution:**

WB 1:500 - 1:2000

IHC 1:50 - 1:200

---

**Storage Instruction:**

Store at -20°C. Avoid freeze / thaw cycles.

**Alternative Names:**

ECTD1;ED1;ED1-A1;ED1-A2;EDA-A1;EDA-A2;EDA1;EDA2;HED;HED1;ODT1;STHAGX1;TNLG7C;XHED;XLHED

**SwissProt:**

Q92838

**Gene ID:**

1896 (human);

**Calculated Molecular Weight:**

14kDa/15kDa/40kDa/41kDa

**Purification:**

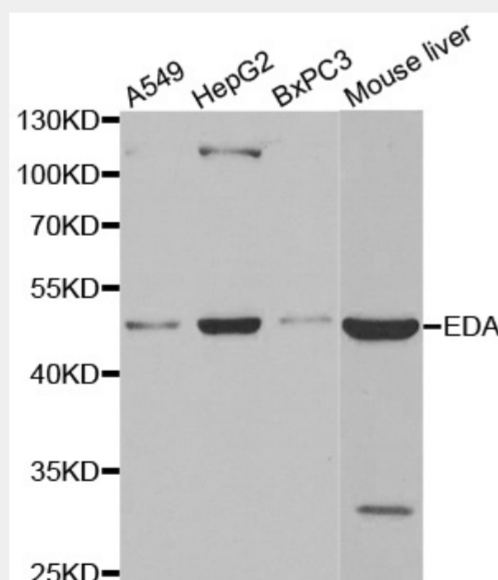
Affinity purification

**Cellular Location:**

Cell membrane,Secreted,Single-pass type II membrane protein,

**Product Description**

The protein encoded by this gene is a type II membrane protein that can be cleaved by furin to produce a secreted form. The encoded protein, which belongs to the tumor necrosis factor family, acts as a homotrimer and may be involved in cell-cell signaling during the development of ectodermal organs. Defects in this gene are a cause of ectodermal dysplasia, anhidrotic, which is also known as X-linked hypohidrotic ectodermal dysplasia. Several transcript variants encoding many different isoforms have been found for this gene.



Western blot analysis of extracts of various cell lines, using EDA antibody at 1:400 dilution.

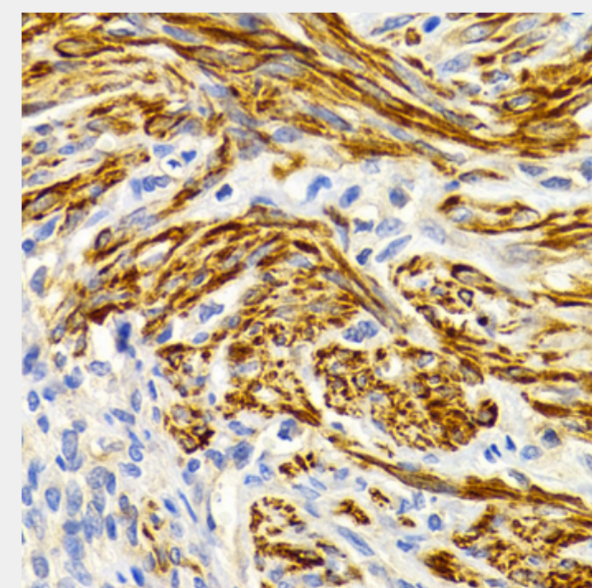
Secondary antibody: HRP Goat Anti-Rabbit IgG (H+L) at 1:10000 dilution.

Lysates/proteins: 25ug per lane.

Blocking buffer: 3% nonfat dry milk in TBST.

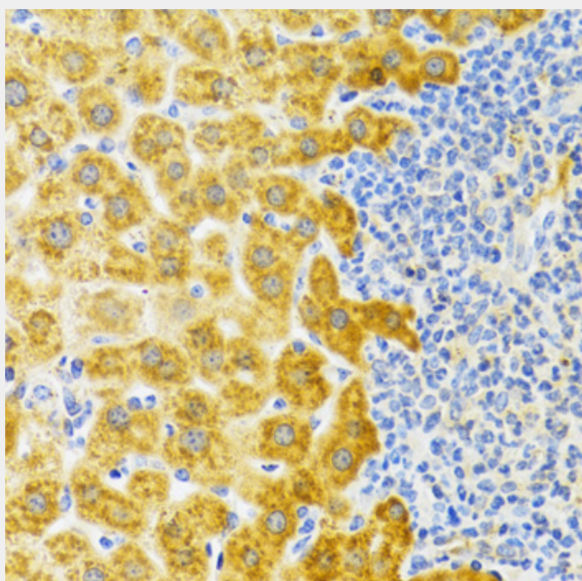
Detection: ECL Basic Kit.

Exposure time: 90s.

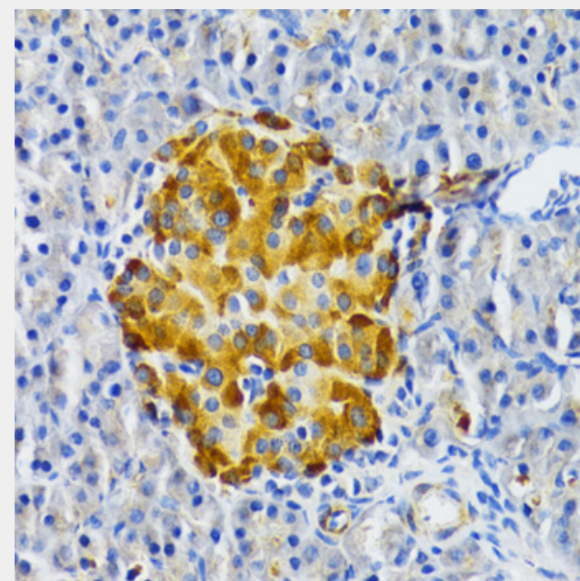


Immunohistochemistry of paraffin-embedded human uterine cancer using EDA Antibody at dilution of 1:200 (40x lens).

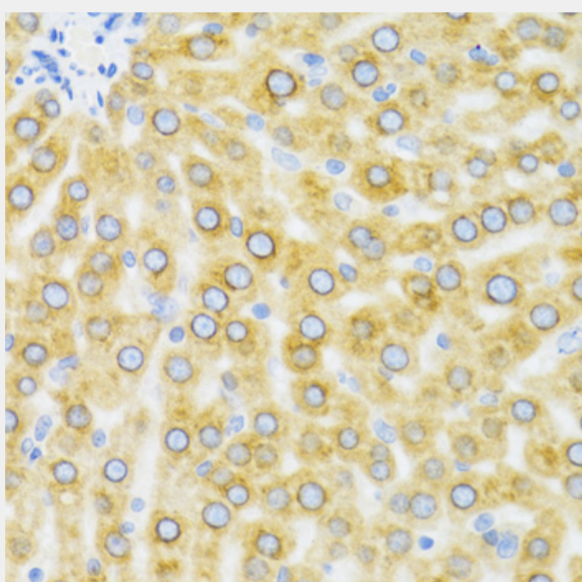




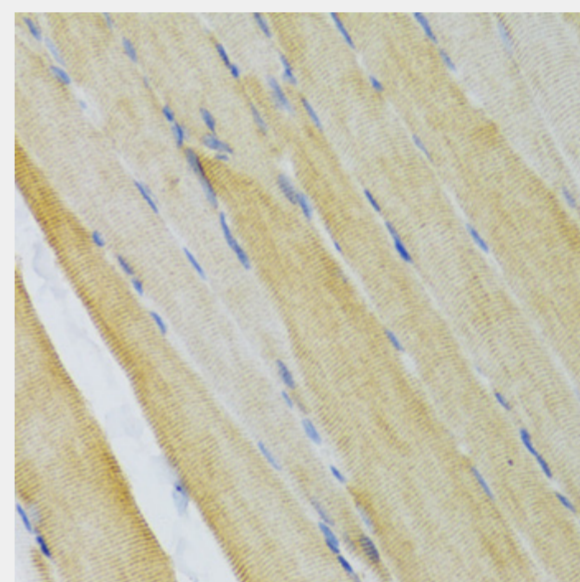
Immunohistochemistry of paraffin-embedded rat liver using EDA Antibody at dilution of 1:100 (40x lens).



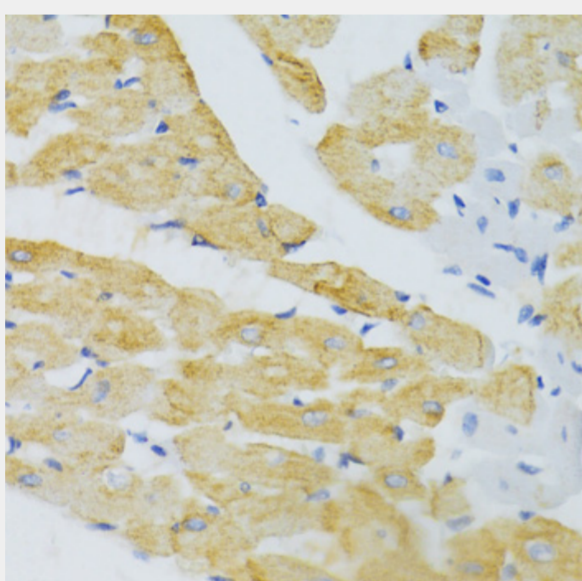
Immunohistochemistry of paraffin-embedded rat pancreas using EDA Antibody at dilution of 1:100 (40x lens).



Immunohistochemistry of paraffin-embedded mouse liver using EDA Antibody at dilution of 1:100 (40x lens).



Immunohistochemistry of paraffin-embedded mouse skeletal muscle using EDA Antibody at dilution of 1:100 (40x lens).



Immunohistochemistry of paraffin-embedded mouse heart using EDA Antibody at dilution of 1:100 (40x lens).

All products are for RESEARCH USE ONLY. Not for diagnostic & therapeutic purposes!