

DDB1 Polyclonal Antibody

Catalog No: tcba7855



Available Sizes

Size: 50ul

Size: 100ul

Size: 200ul



Specifications

Application:

WB,IHC

Research Area:

Cancer,Neuroscience,Metabolism,DNA Damage/Repair,Neurodegeneration,

Species Reactivity:

Human,Mouse,Rat

Host Species:

Rabbit

Isotype:

IgG

Form:

Liquid

Storage Buffer:

Buffer: PBS with 0.02% sodium azide, 50% glycerol, pH7.3.

Recommended Dilution:

WB 1:500 - 1:1000

IHC 1:50 - 1:100

Storage Instruction:

Store at -20°C. Avoid freeze / thaw cycles.

Alternative Names:

DDBA;UV-DDB1;XAP1;XPCE;XPE;XPE-BF

SwissProt:

Q16531

Gene ID:

1642 (human);

Calculated Molecular Weight:

50kDa/126kDa

Purification:

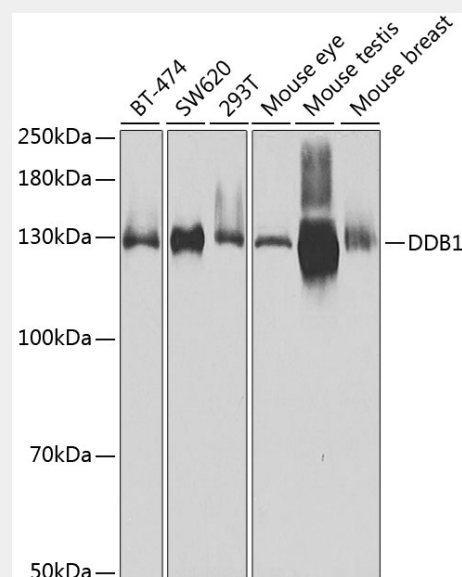
Affinity purification

Cellular Location:

Cytoplasm,Nucleus,

Product Description

The protein encoded by this gene is the large subunit (p127) of the heterodimeric DNA damage-binding (DDB) complex while another protein (p48) forms the small subunit. This protein complex functions in nucleotide-excision repair and binds to DNA following UV damage. Defective activity of this complex causes the repair defect in patients with xeroderma pigmentosum complementation group E (XPE) - an autosomal recessive disorder characterized by photosensitivity and early onset of carcinomas. However, it remains for mutation analysis to demonstrate whether the defect in XPE patients is in this gene or the gene encoding the small subunit. In addition, Best vitelliform macular dystrophy is mapped to the same region as this gene on 11q, but no sequence alternations of this gene are demonstrated in Best disease patients. The protein encoded by this gene also functions as an adaptor molecule for the cullin 4 (CUL4) ubiquitin E3 ligase complex by facilitating the binding of substrates to this complex and the ubiquitination of proteins.



Western blot analysis of extracts of various cell lines, using DDB1 Antibody at 1:500 dilution.

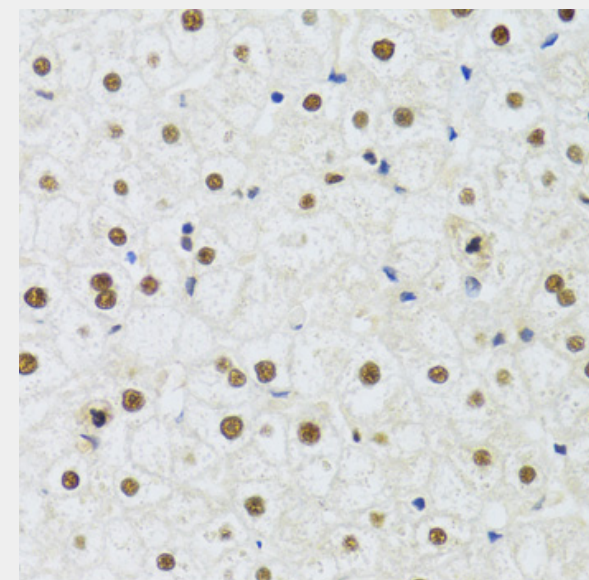
Secondary antibody: HRP Goat Anti-Rabbit IgG (H+L) at 1:10000 dilution.

Lysates/proteins: 25ug per lane.

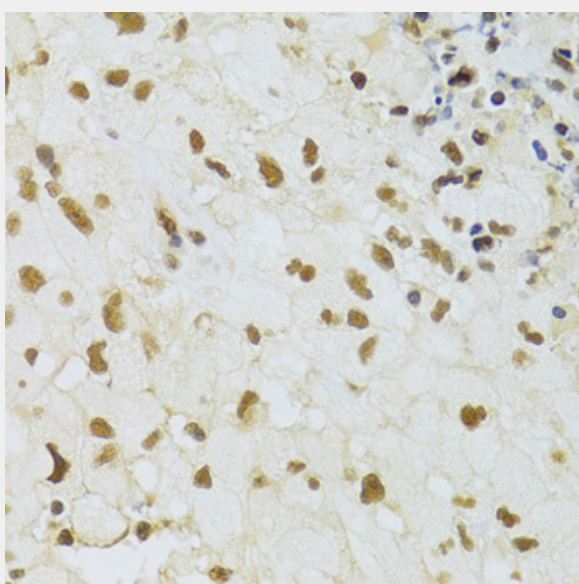
Blocking buffer: 3% nonfat dry milk in TBST.

Detection: ECL Basic Kit.

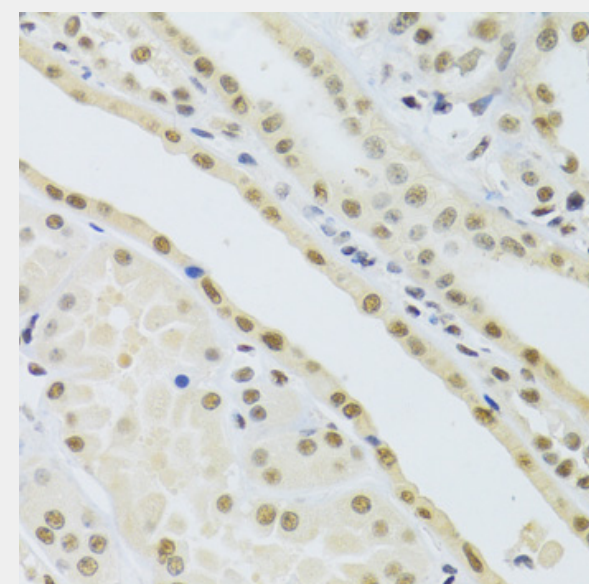
Exposure time: 30s.



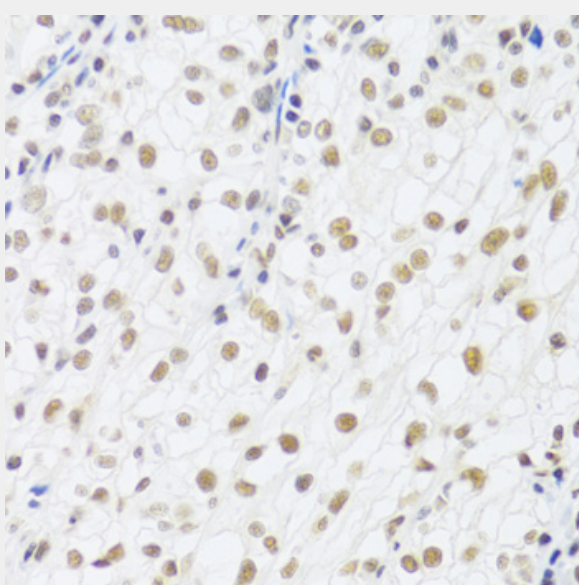
Immunohistochemistry of paraffin-embedded human liver using DDB1 Antibody at dilution of 1:100 (40x lens).



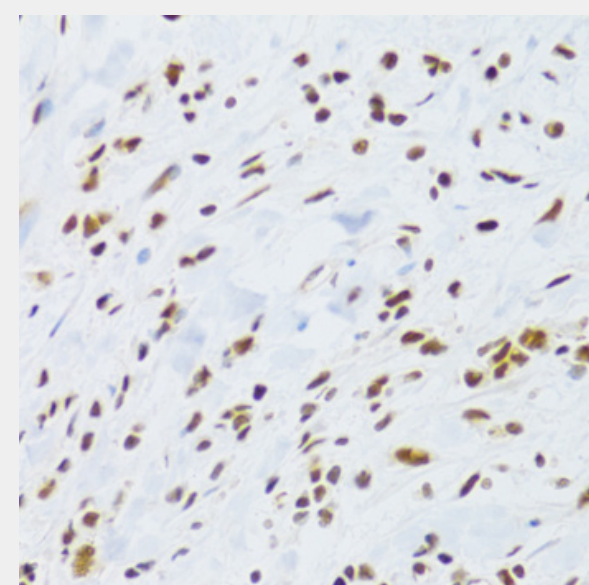
Immunohistochemistry of paraffin-embedded human brain cancer using DDB1 Antibody at dilution of 1:100 (40x lens).



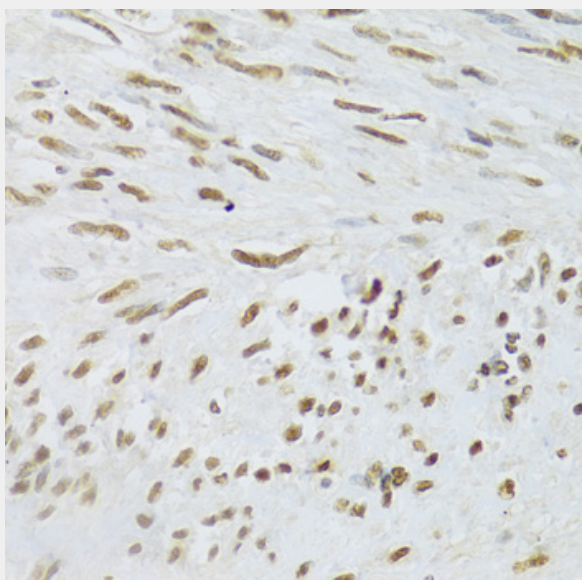
Immunohistochemistry of paraffin-embedded human kidney using DDB1 Antibody at dilution of 1:100 (40x lens).



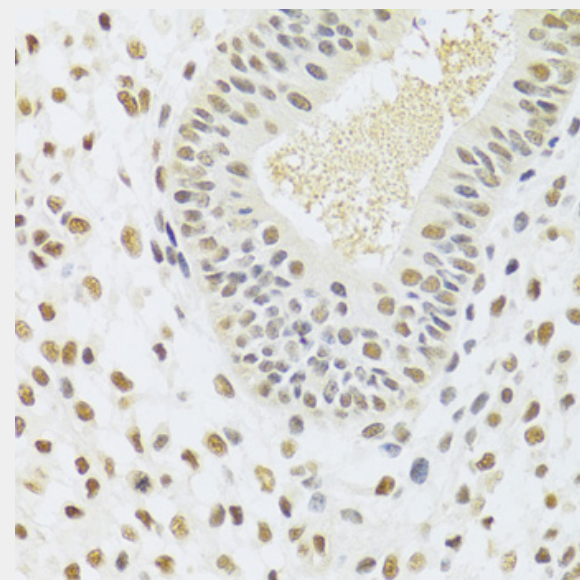
Immunohistochemistry of paraffin-embedded human kidney cancer using DDB1 Antibody at dilution of 1:100 (40x lens).



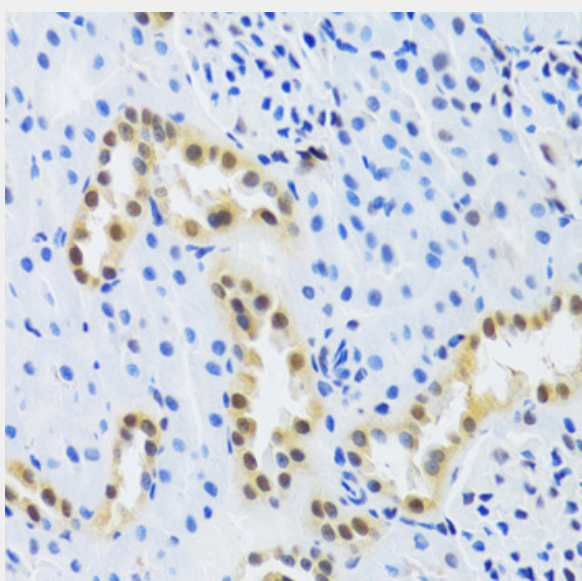
Immunohistochemistry of paraffin-embedded human gastric cancer using DDB1 Antibody at dilution of 1:100 (40x lens).



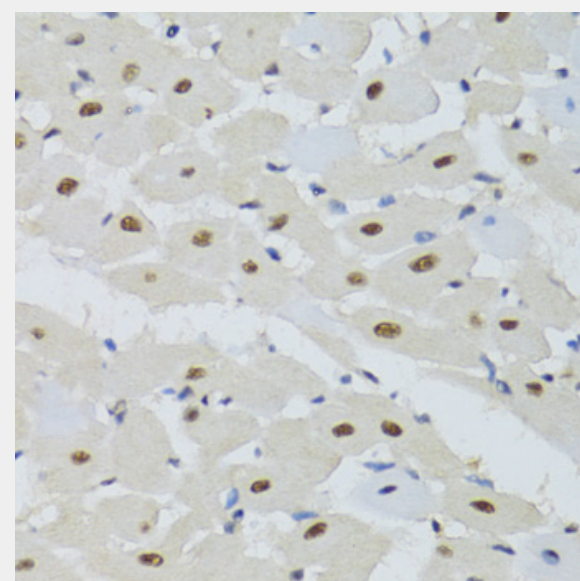
Immunohistochemistry of paraffin-embedded human uterus using DDB1 Antibody at dilution of 1:100 (40x lens).



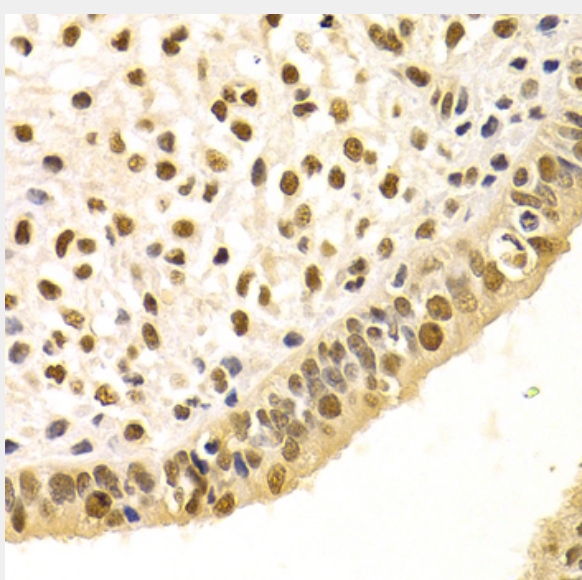
Immunohistochemistry of paraffin-embedded human uterine cancer using DDB1 Antibody at dilution of 1:100 (40x lens).



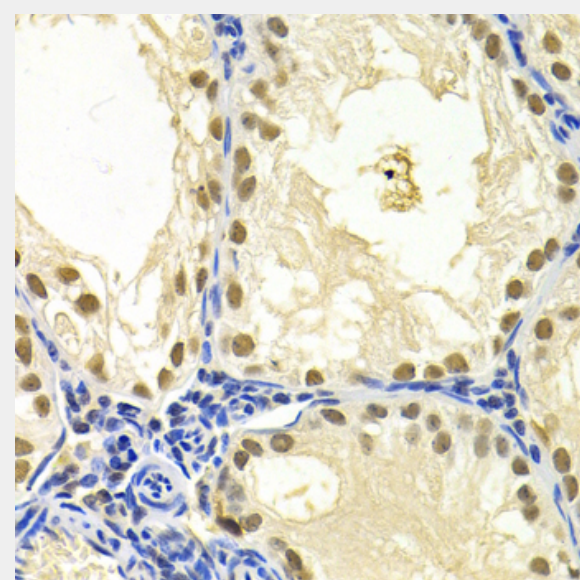
Immunohistochemistry of paraffin-embedded mouse kidney using DDB1 Antibody at dilution of 1:100 (40x lens).



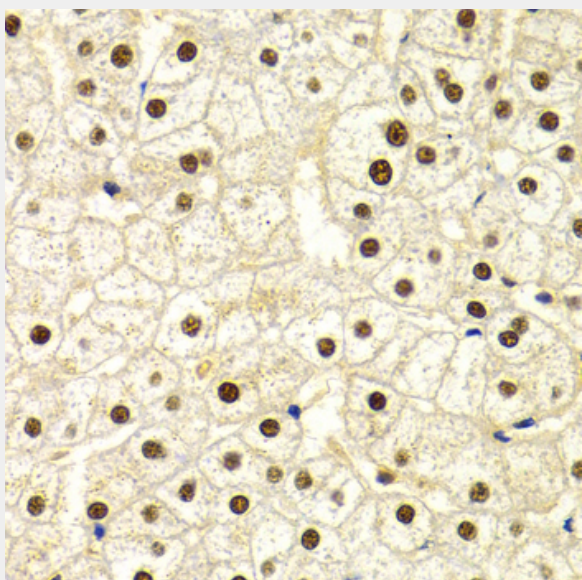
Immunohistochemistry of paraffin-embedded mouse heart using DDB1 Antibody at dilution of 1:100 (40x lens).



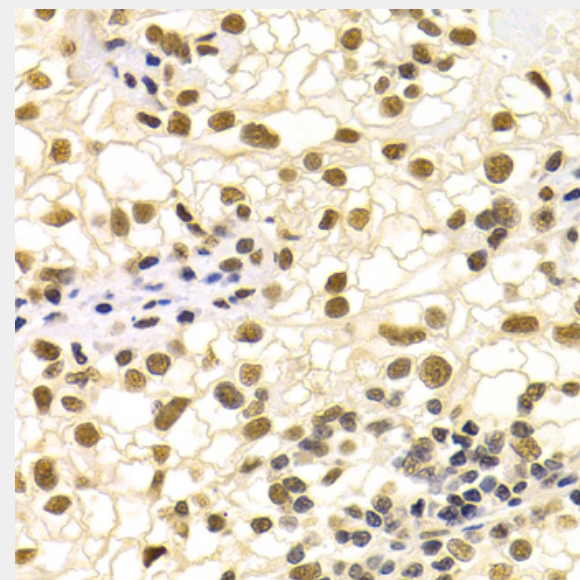
Immunohistochemistry of paraffin-embedded human uterine cancer using DDB1 Antibody at dilution of 1:200 (40x lens).



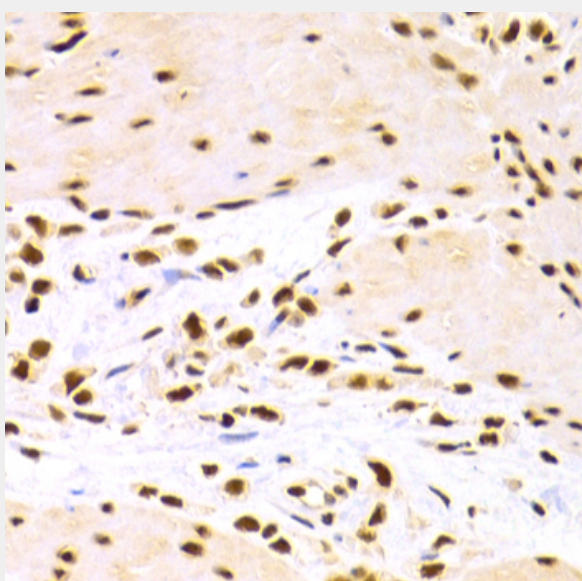
Immunohistochemistry of paraffin-embedded mouse testis using DDB1 Antibody at dilution of 1:200 (40x lens).



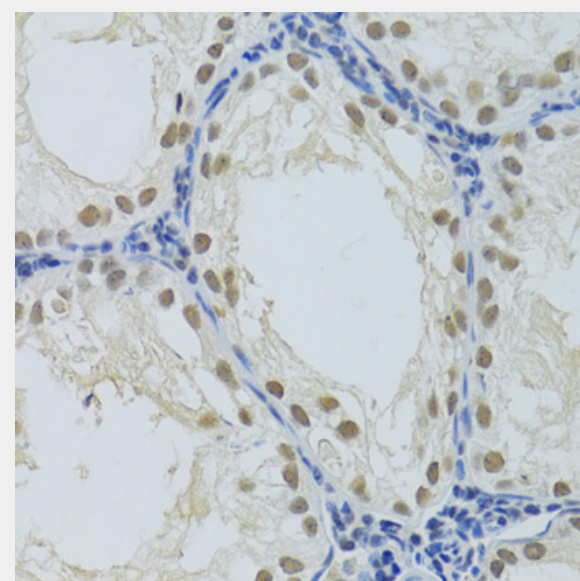
Immunohistochemistry of paraffin-embedded human liver injury using DDB1 Antibody at dilution of 1:200 (40x lens).



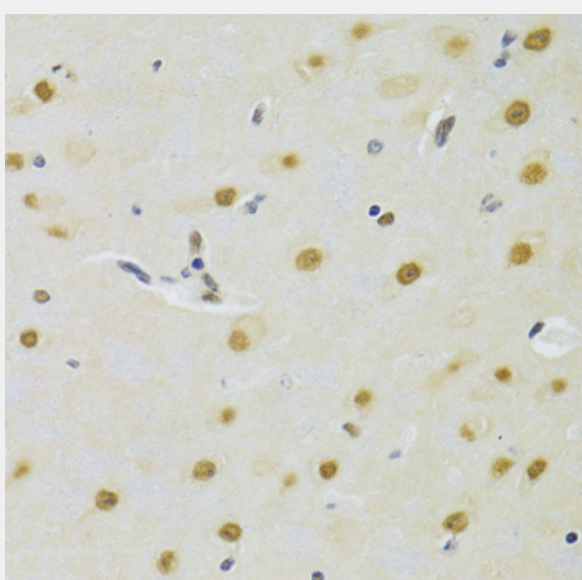
Immunohistochemistry of paraffin-embedded human kidney cancer using DDB1 Antibody at dilution of 1:200 (40x lens).



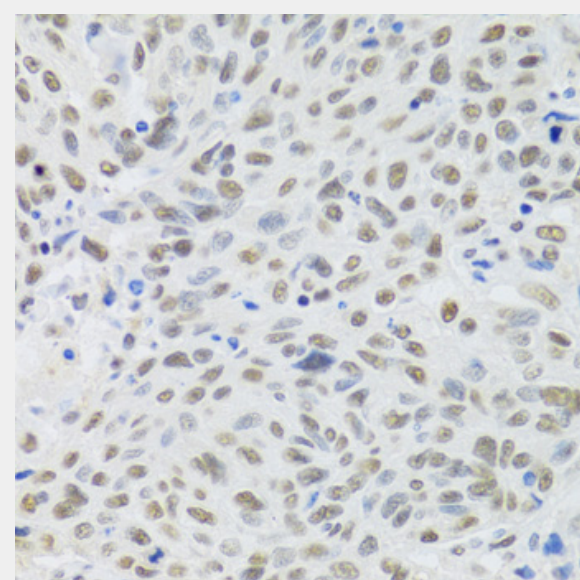
Immunohistochemistry of paraffin-embedded human gastric cancer using DDB1 Antibody at dilution of 1:200 (40x lens).



Immunohistochemistry of paraffin-embedded rat testis using DDB1 Antibody at dilution of 1:100 (40x lens).



Immunohistochemistry of paraffin-embedded rat brain using DDB1 Antibody at dilution of 1:100 (40x lens).



Immunohistochemistry of paraffin-embedded human lung cancer using DDB1 Antibody at dilution of 1:100 (40x lens).

All products are for RESEARCH USE ONLY. Not for diagnostic & therapeutic purposes!