

# USO1 Polyclonal Antibody

Catalog No: tcba7776



## Available Sizes

---

**Size:** 50ul

---

**Size:** 100ul

---

**Size:** 200ul

---



## Specifications

---

**Application:**

WB,IHC,IF

---

**Research Area:**

RNA Binding Protein(RBP),

---

**Species Reactivity:**

Human,Mouse

---

**Host Species:**

Rabbit

---

**Isotype:**

IgG

---

**Form:**

Liquid

---

**Storage Buffer:**

Buffer: PBS with 0.02% sodium azide, 50% glycerol, pH7.3.

---

**Recommended Dilution:**

WB 1:500 - 1:2000

IHC 1:50 - 1:200

IF 1:50 - 1:200

---

**Storage Instruction:**

Store at -20°C. Avoid freeze / thaw cycles.

---

**Alternative Names:**

P115;TAP;VDP

---

**SwissProt:**

O60763

---

**Gene ID:**

8615 (human);

---

**Calculated Molecular Weight:**

107kDa/109kDa

---

**Purification:**

Affinity purification

---

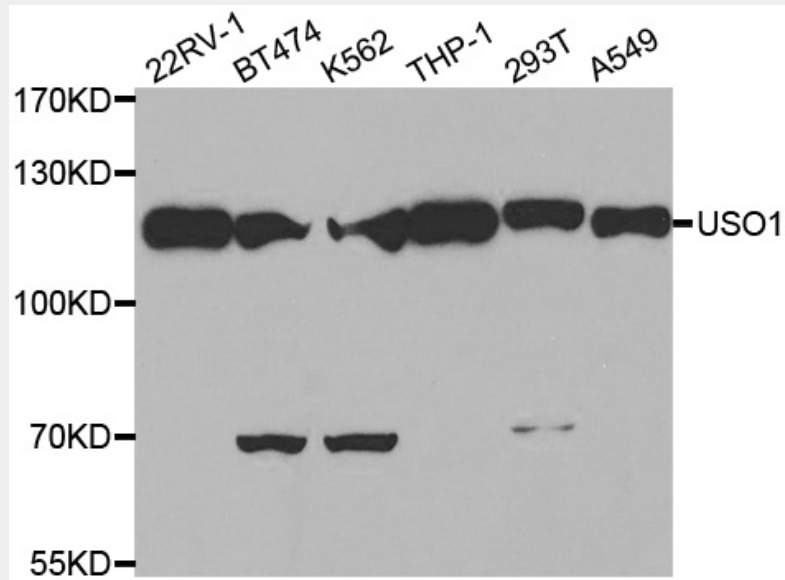
**Cellular Location:**

Cytoplasm,Golgi apparatus membrane,Peripheral membrane protein,cytosol,

---

**Product Description**

The protein encoded by this gene is a peripheral membrane protein which recycles between the cytosol and the Golgi apparatus during interphase. It is regulated by phosphorylation: dephosphorylated protein associates with the Golgi membrane and dissociates from the membrane upon phosphorylation. Ras-associated protein 1 recruits this protein to coat protein complex II (COPII) vesicles during budding from the endoplasmic reticulum, where it interacts with a set of COPII vesicle-associated SNAREs to form a cis-SNARE complex that promotes targeting to the Golgi apparatus. Alternative splicing results in multiple transcript variants.



Western blot analysis of extracts of various cell lines, using USO1 antibody at 1:500 dilution.

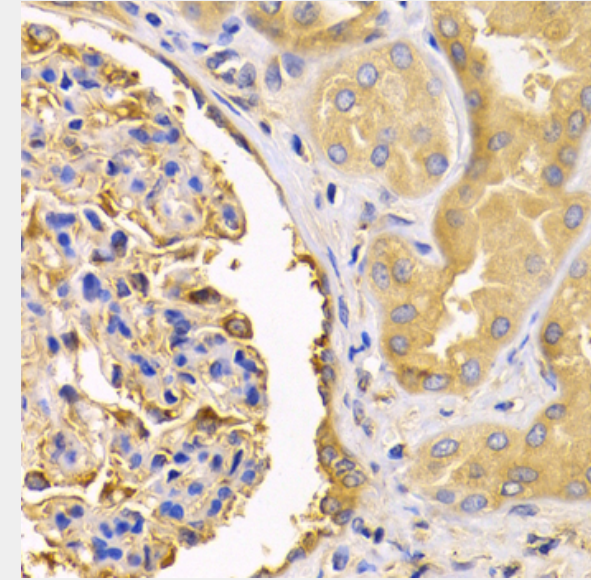
Secondary antibody: HRP Goat Anti-Rabbit IgG (H+L) at 1:10000 dilution.

Lysates/proteins: 25ug per lane.

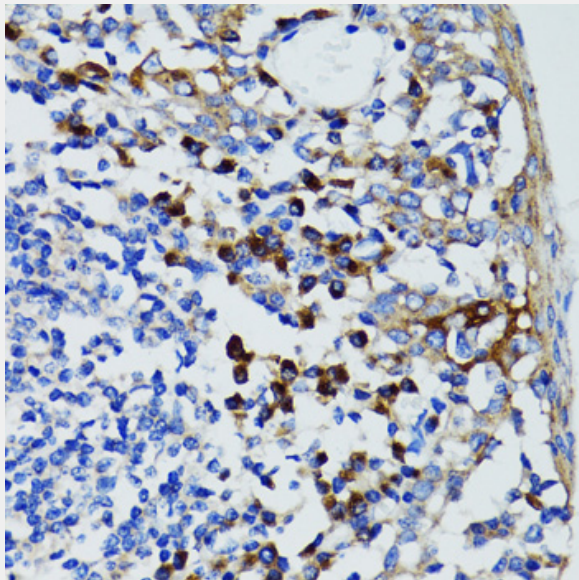
Blocking buffer: 3% nonfat dry milk in TBST.

Detection: ECL Basic Kit.

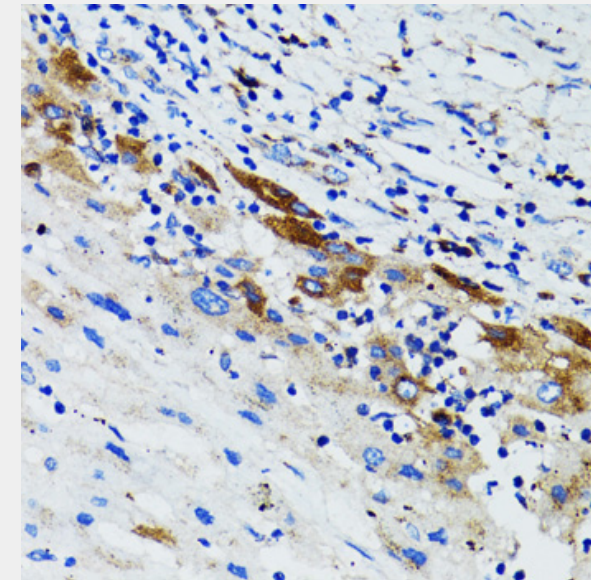
Exposure time: 90s.



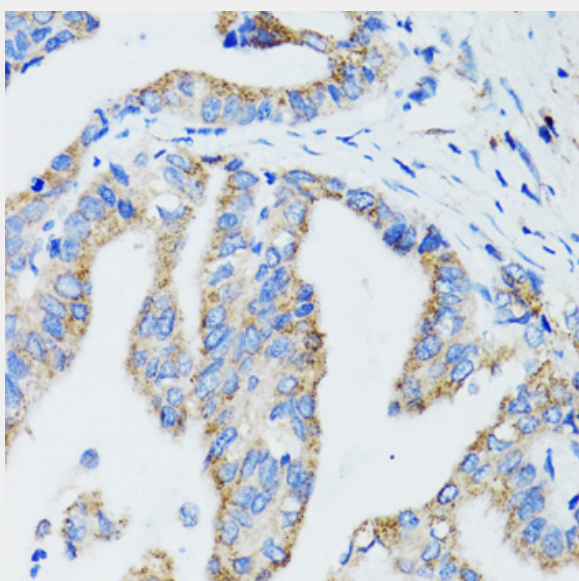
Immunohistochemistry of paraffin-embedded human kidney using USO1 antibody at dilution of 1:200 (40x lens).



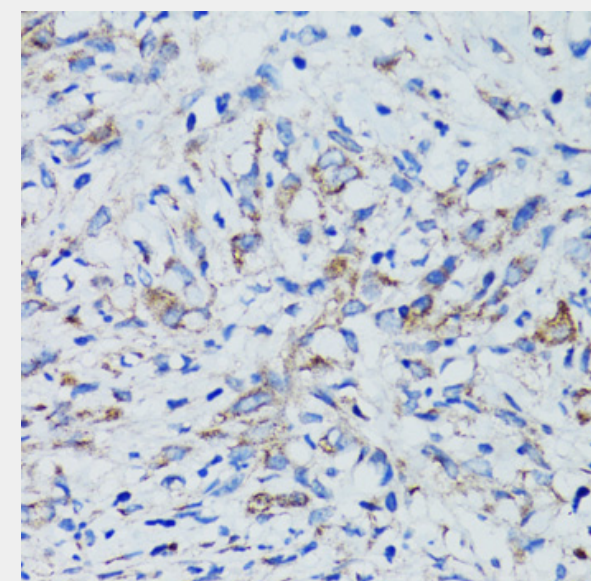
Immunohistochemistry of paraffin-embedded human tonsil using USO1 antibody at dilution of 1:100 (40x lens).



Immunohistochemistry of paraffin-embedded human liver cancer using USO1 antibody at dilution of 1:100 (40x lens).

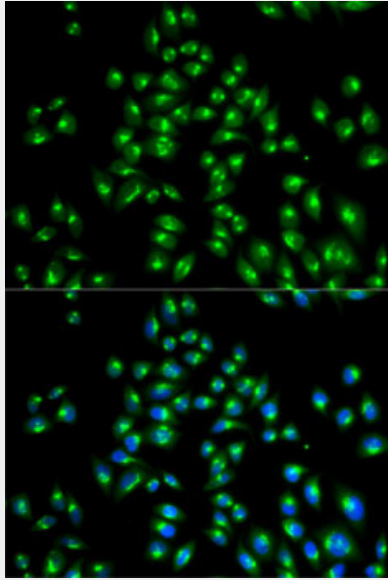


Immunohistochemistry of paraffin-embedded human gastric cancer using USO1 antibody at dilution of 1:100 (40x lens).



Immunohistochemistry of paraffin-embedded human uterine cancer using USO1 antibody at dilution of 1:100 (40x lens).





Immunofluorescence analysis of HeLa cells using USO1 antibody. Blue: DAPI for nuclear staining.

All products are for RESEARCH USE ONLY. Not for diagnostic & therapeutic purposes!