

PTPN11 Polyclonal Antibody

Catalog No: tcba7774



Available Sizes

Size: 50ul

Size: 100ul

Size: 200ul



Specifications

Application:

WB,IHC,IF

Research Area:

Cancer,Neuroscience,

Species Reactivity:

Human,Mouse,Rat

Host Species:

Rabbit

Isotype:

IgG

Form:

Liquid

Storage Buffer:

Buffer: PBS with 0.02% sodium azide, 50% glycerol, pH7.3.

Recommended Dilution:

WB 1:500 - 1:1000

IHC 1:50 - 1:100

IF 1:50 - 1:100

Storage Instruction:

Store at -20°C. Avoid freeze / thaw cycles.

Alternative Names:

BPTP3;CFC;JMML;METCDS;NS1;PTP-1D;PTP2C;SH-PTP2;SH-PTP3;SHP2

SwissProt:

Q06124

Gene ID:

5781 (human);

Calculated Molecular Weight:

52kDa/68kDa

Purification:

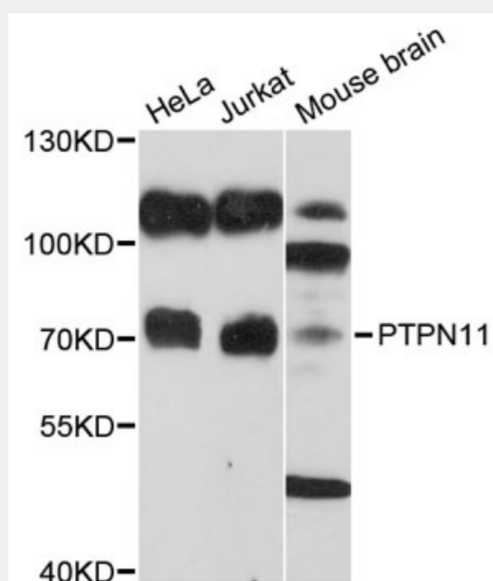
Affinity purification

Cellular Location:

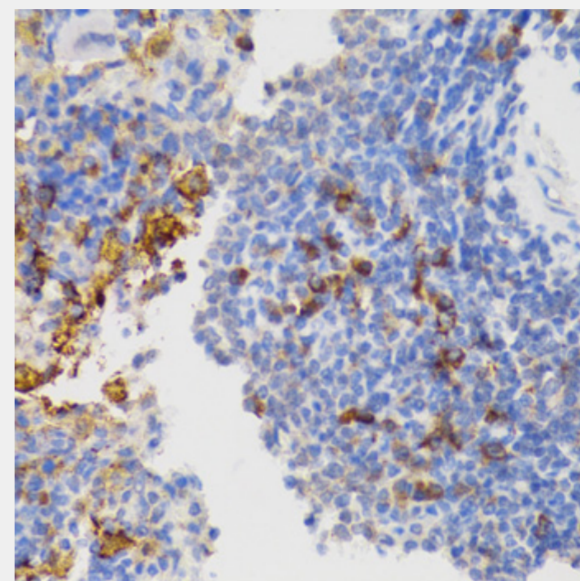
Cytoplasm,

Product Description

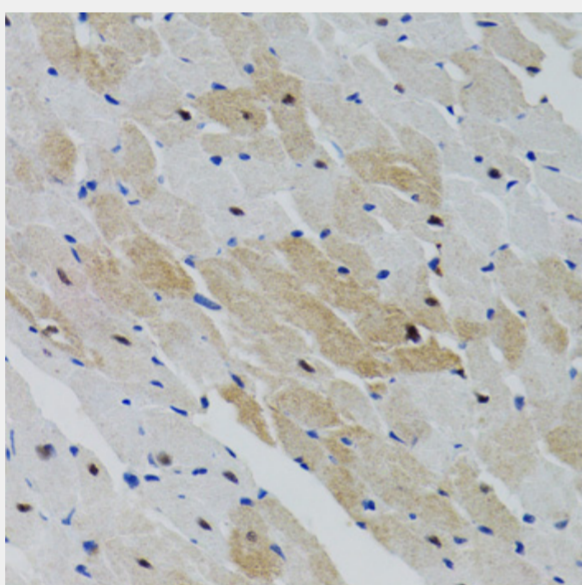
The protein encoded by this gene is a member of the protein tyrosine phosphatase (PTP) family. PTPs are known to be signaling molecules that regulate a variety of cellular processes including cell growth, differentiation, mitotic cycle, and oncogenic transformation. This PTP contains two tandem Src homology-2 domains, which function as phospho-tyrosine binding domains and mediate the interaction of this PTP with its substrates. This PTP is widely expressed in most tissues and plays a regulatory role in various cell signaling events that are important for a diversity of cell functions, such as mitogenic activation, metabolic control, transcription regulation, and cell migration. Mutations in this gene are a cause of Noonan syndrome as well as acute myeloid leukemia. Two transcript variants encoding different isoforms have been found for this gene.



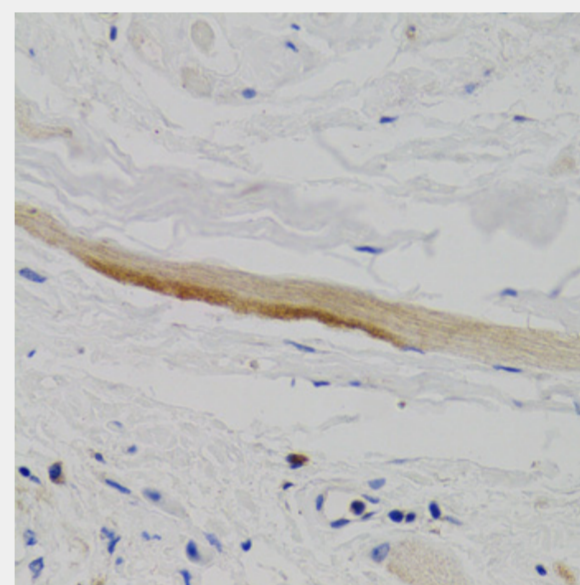
Western blot analysis of extracts of various cell lines, using PTPN11 antibody at 1:1000 dilution.
Secondary antibody: HRP Goat Anti-Rabbit IgG (H+L) at 1:10000 dilution.
Lysates/proteins: 25ug per lane.
Blocking buffer: 3% nonfat dry milk in TBST.
Detection: ECL Basic Kit.
Exposure time: 90s.



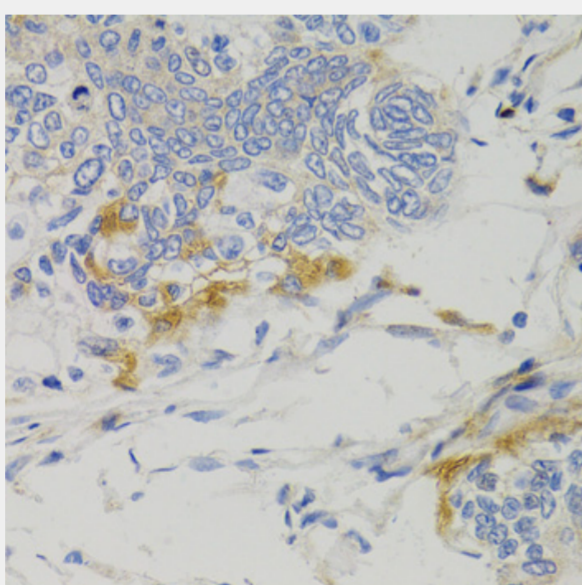
Immunohistochemistry of paraffin-embedded rat spleen using PTPN11 antibody at dilution of 1:100 (40x lens).



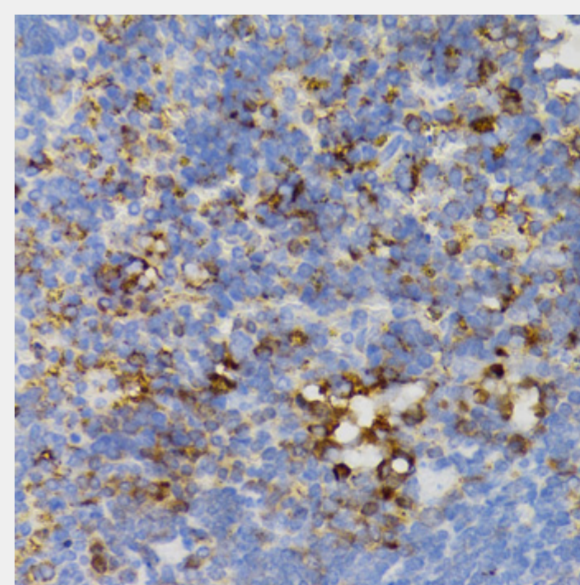
Immunohistochemistry of paraffin-embedded rat heart using PTPN11 antibody at dilution of 1:100 (40x lens).



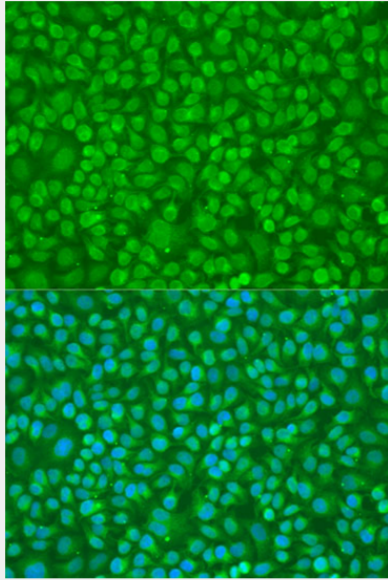
Immunohistochemistry of paraffin-embedded human esophagus using PTPN11 antibody at dilution of 1:100 (40x lens).



Immunohistochemistry of paraffin-embedded human gastric cancer using PTPN11 antibody at dilution of 1:100 (40x lens).



Immunohistochemistry of paraffin-embedded mouse spleen using PTPN11 antibody at dilution of 1:100 (40x lens).



Immunofluorescence analysis of U2OS cells using PTPN11 antibody at dilution of 1:100. Blue: DAPI for nuclear staining.

All products are for RESEARCH USE ONLY. Not for diagnostic & therapeutic purposes!