

PVALB Polyclonal Antibody

Catalog No: tcba7773



Available Sizes

Size: 50ul

Size: 100ul

Size: 200ul



Specifications

Application:

WB,IHC

Research Area:

Neuroscience,Cardiovascular,Calcium pathway,

Species Reactivity:

Human,Mouse,Rat

Host Species:

Rabbit

Isotype:

IgG

Form:

Liquid

Storage Buffer:

Buffer: PBS with 0.02% sodium azide, 50% glycerol, pH7.3.

Recommended Dilution:

WB 1:400 - 1:2000

IHC 1:50 - 1:200

Storage Instruction:

Store at -20°C. Avoid freeze / thaw cycles.

Alternative Names:

D22S749

SwissProt:

P20472

Gene ID:

5816 (human);

Calculated Molecular Weight:

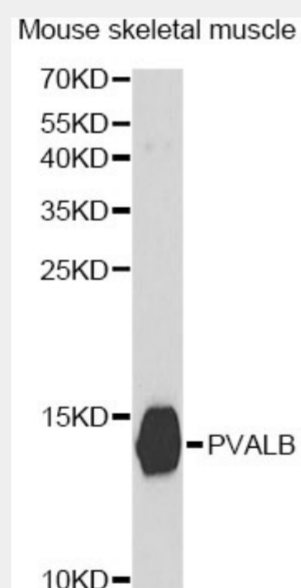
12kDa

Purification:

Affinity purification

Product Description

The protein encoded by this gene is a high affinity calcium ion-binding protein that is structurally and functionally similar to calmodulin and troponin C. The encoded protein is thought to be involved in muscle relaxation. Alternative splicing results in multiple transcript variants.



Western blot analysis of extracts of mouse skeletal muscle, using PVALB antibody at 1:400 dilution.

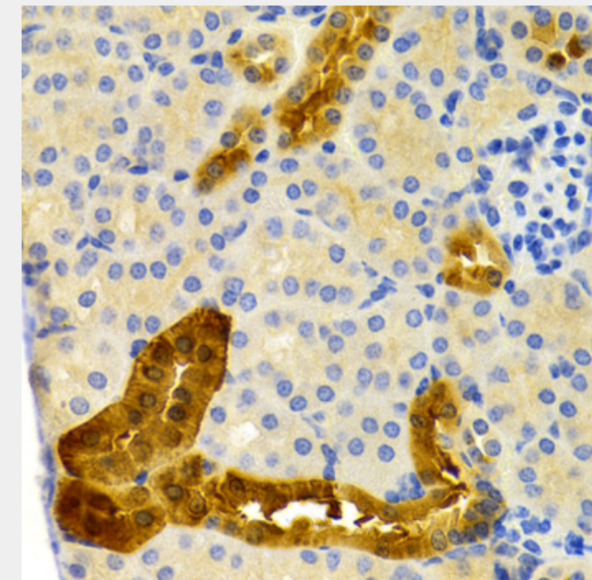
Secondary antibody: HRP Goat Anti-Rabbit IgG (H+L) at 1:10000 dilution.

Lysates/proteins: 25ug per lane.

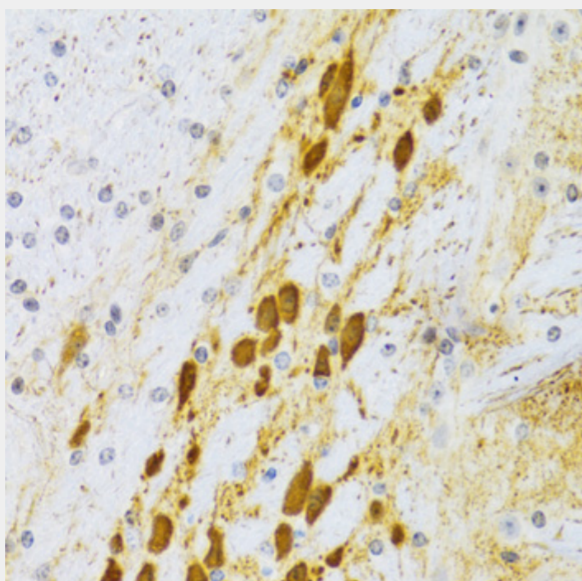
Blocking buffer: 3% nonfat dry milk in TBST.

Detection: ECL Basic Kit.

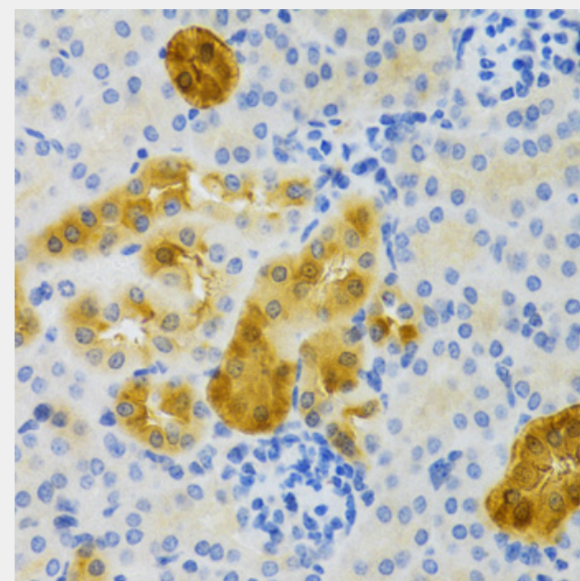
Exposure time: 90s.



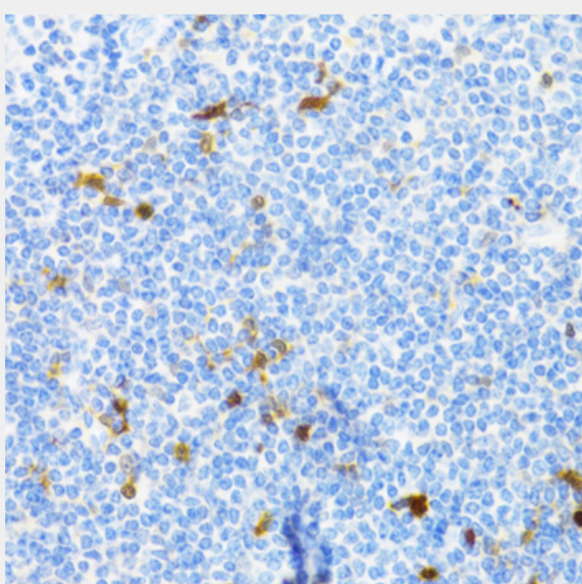
Immunohistochemistry of paraffin-embedded mouse kidney using PVALB Antibody at dilution of 1:200 (40x lens).



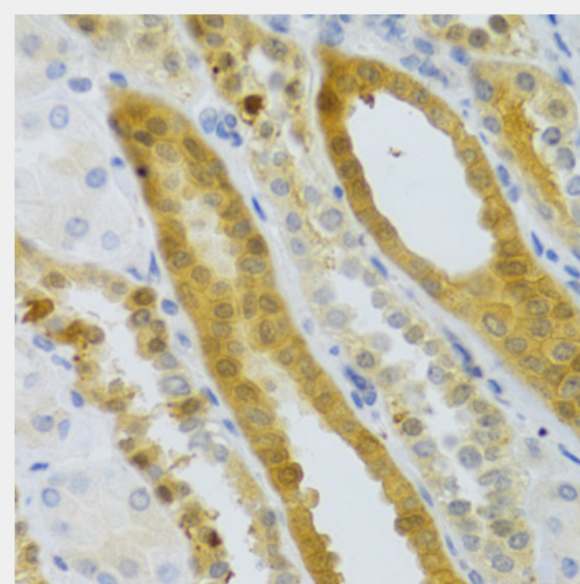
Immunohistochemistry of paraffin-embedded rat brain using PVALB Antibody at dilution of 1:100 (40x lens).



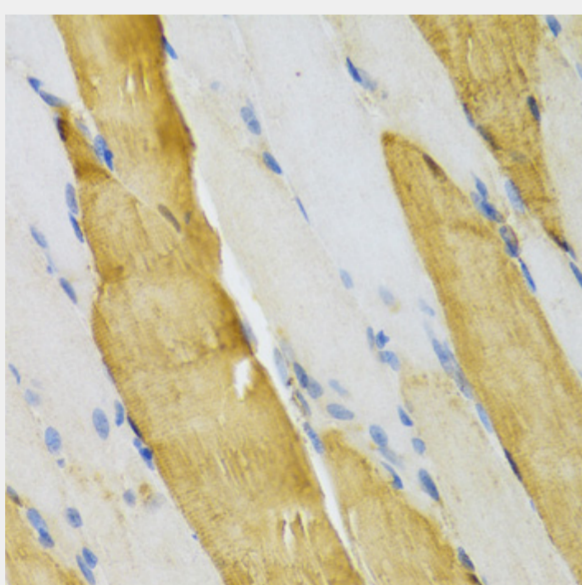
Immunohistochemistry of paraffin-embedded rat kidney using PVALB Antibody at dilution of 1:100 (40x lens).



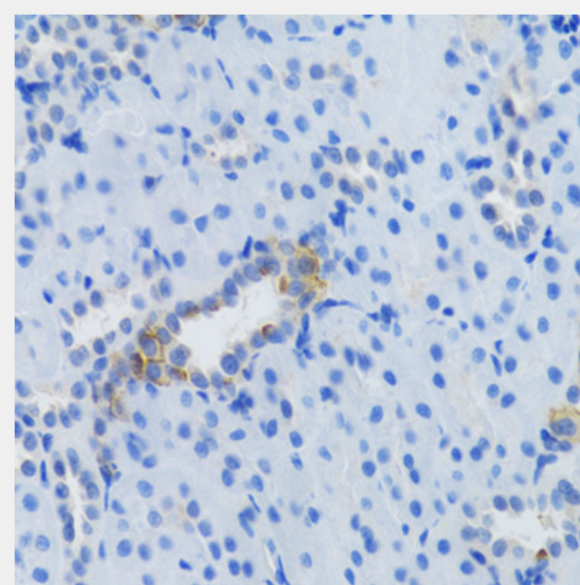
Immunohistochemistry of paraffin-embedded human tonsil using PVALB Antibody at dilution of 1:100 (40x lens).



Immunohistochemistry of paraffin-embedded human kidney using PVALB Antibody at dilution of 1:100 (40x lens).



Immunohistochemistry of paraffin-embedded mouse skeletal muscle using PVALB Antibody at dilution of 1:100 (40x lens).



Immunohistochemistry of paraffin-embedded mouse kidney using PVALB Antibody at dilution of 1:100 (40x lens).

All products are for RESEARCH USE ONLY. Not for diagnostic & therapeutic purposes!