

TRAP1 Polyclonal Antibody

Catalog No: tcba7737



Available Sizes

Size: 50ul

Size: 100ul

Size: 200ul



Specifications

Application:

WB,IHC,IF

Research Area:

Cancer,Apoptosis,Cell Biology,Metabolism,RNA Binding Protein(RBP),

Species Reactivity:

Human,Mouse,Rat

Host Species:

Rabbit

Isotype:

IgG

Form:

Liquid

Storage Buffer:

Buffer: PBS with 0.02% sodium azide, 50% glycerol, pH7.3.

Recommended Dilution:

WB 1:500 - 1:2000

IHC 1:50 - 1:200

IF 1:50 - 1:200

Storage Instruction:

Store at -20°C. Avoid freeze / thaw cycles.

Alternative Names:

HSP75;HSP75;HSP90L;TRAP-1

SwissProt:

Q12931

Gene ID:

10131 (human);

Calculated Molecular Weight:

74kDa/80kDa

Purification:

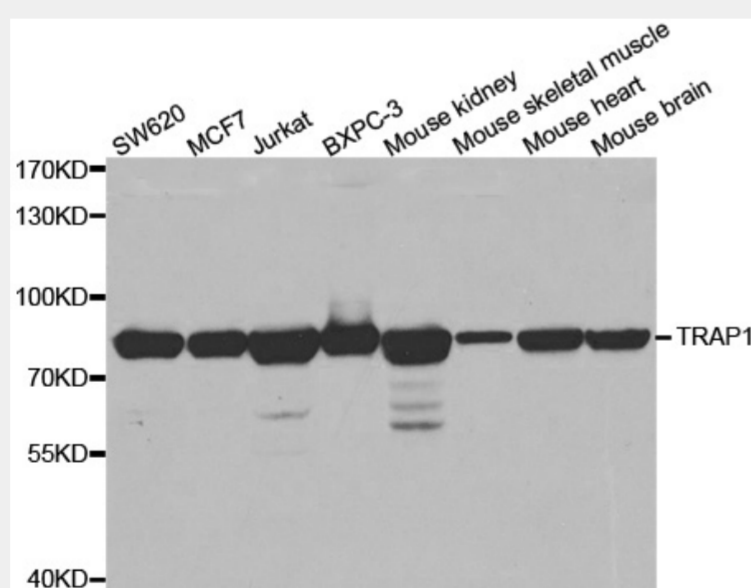
Affinity purification

Cellular Location:

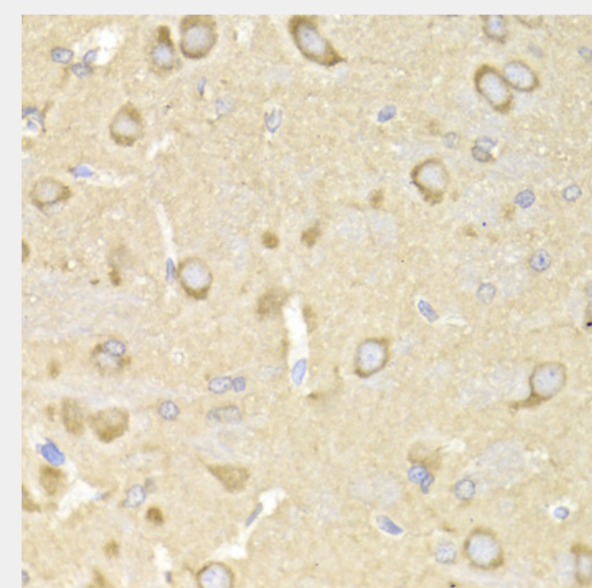
Mitochondrion,Mitochondrion inner membrane,Mitochondrion matrix,

Product Description

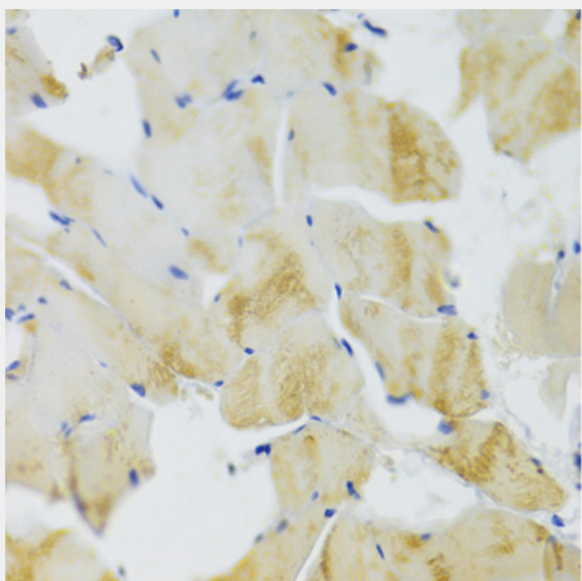
This gene encodes a mitochondrial chaperone protein that is member of the heat shock protein 90 (HSP90) family. The encoded protein has ATPase activity and interacts with tumor necrosis factor type I. This protein may function in regulating cellular stress responses. Alternate splicing results in multiple transcript variants.



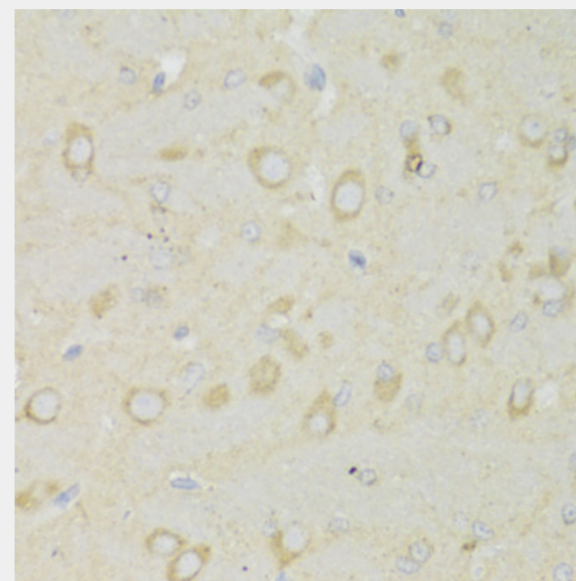
Western blot analysis of extracts of various cell lines, using TRAP1 antibody at 1:1000 dilution.
Secondary antibody: HRP Goat Anti-Rabbit IgG (H+L) at 1:10000 dilution.
Lysates/proteins: 25ug per lane.
Blocking buffer: 3% nonfat dry milk in TBST.
Detection: ECL Basic Kit.
Exposure time: 30s.



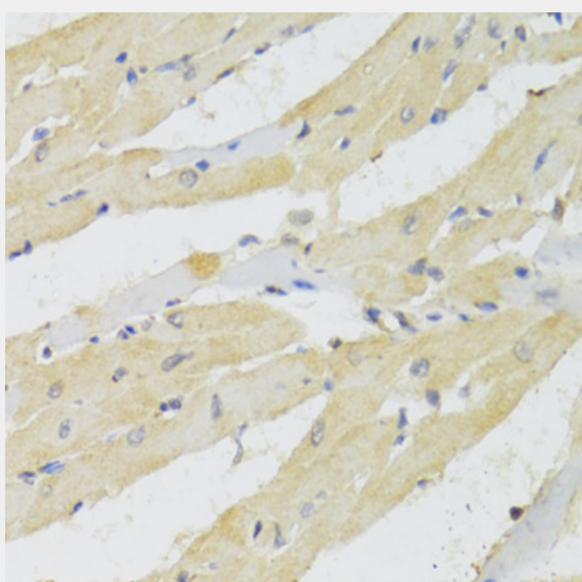
Immunohistochemistry of paraffin-embedded rat brain using TRAP1 Antibody at dilution of 1:200 (40x lens).



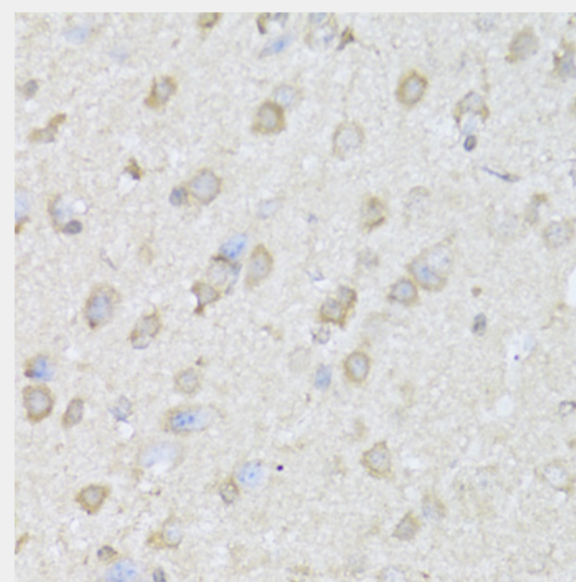
Immunohistochemistry of paraffin-embedded rat skeletal muscle using TRAP1 Antibody at dilution of 1:100 (40x lens).



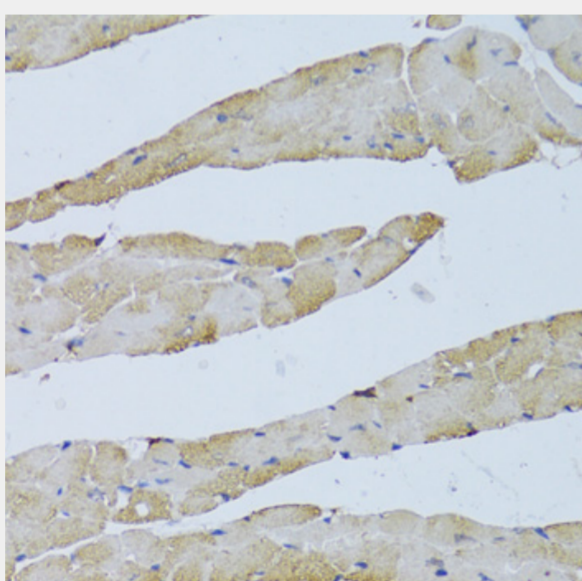
Immunohistochemistry of paraffin-embedded rat brain using TRAP1 Antibody at dilution of 1:100 (40x lens).



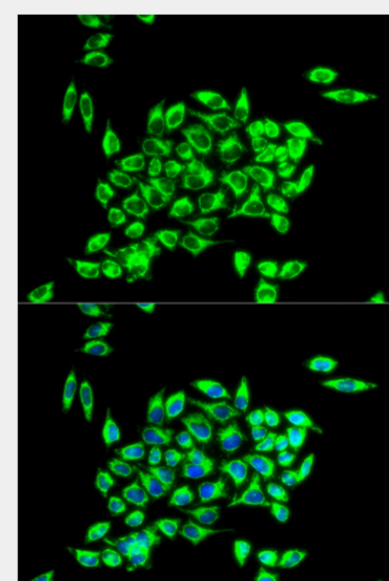
Immunohistochemistry of paraffin-embedded rat heart using TRAP1 Antibody at dilution of 1:100 (40x lens).



Immunohistochemistry of paraffin-embedded mouse brain using TRAP1 Antibody at dilution of 1:100 (40x lens).



Immunohistochemistry of paraffin-embedded mouse heart using TRAP1 Antibody at dilution of 1:100 (40x lens).



Immunofluorescence analysis of HeLa cells using TRAP1 antibody. Blue: DAPI for nuclear staining.

All products are for RESEARCH USE ONLY. Not for diagnostic & therapeutic purposes!