

# EEF1G Polyclonal Antibody

Catalog No: tcba7712



## Available Sizes

---

**Size:** 50ul

**Size:** 100ul

**Size:** 200ul



## Specifications

---

**Application:**

WB,IHC,IF

**Research Area:**

,

**Species Reactivity:**

Human,Mouse,Rat

**Host Species:**

Rabbit

**Isotype:**

IgG

**Form:**

Liquid

**Storage Buffer:**

Buffer: PBS with 0.02% sodium azide, 50% glycerol, pH7.3.

**Recommended Dilution:**

WB 1:500 - 1:2000

IHC 1:100 - 1:200

IF 1:50 - 1:200

**Storage Instruction:**

Store at -20°C. Avoid freeze / thaw cycles.

**Alternative Names:**

EF1G;GIG35

**SwissProt:**

P26641

**Gene ID:**

1937 (human);

**Calculated Molecular Weight:**

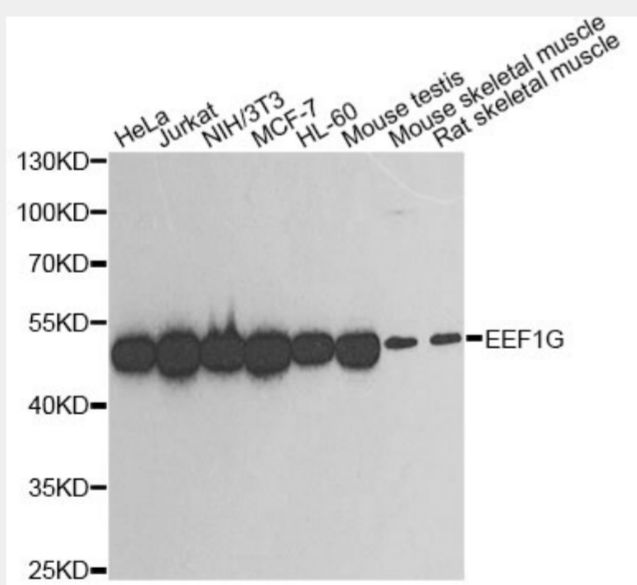
50kDa/56kDa

**Purification:**

Affinity purification

**Product Description**

This gene encodes a subunit of the elongation factor-1 complex, which is responsible for the enzymatic delivery of aminoacyl tRNAs to the ribosome. This subunit contains an N-terminal glutathione transferase domain, which may be involved in regulating the assembly of multisubunit complexes containing this elongation factor and aminoacyl-tRNA synthetases.



Western blot analysis of extracts of various cell lines, using EEF1G antibody at 1:500 dilution.

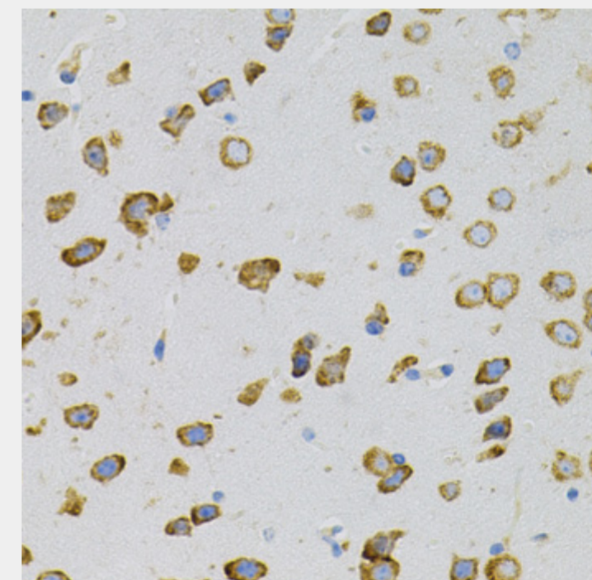
Secondary antibody: HRP Goat Anti-Rabbit IgG (H+L) at 1:10000 dilution.

Lysates/proteins: 25ug per lane.

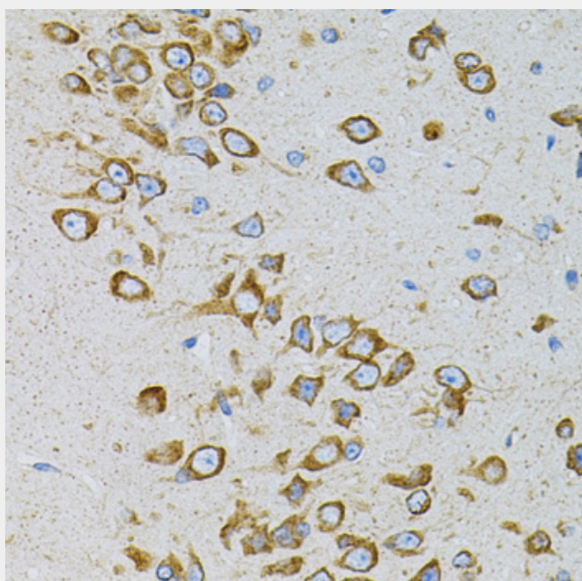
Blocking buffer: 3% nonfat dry milk in TBST.

Detection: ECL Enhanced Kit.

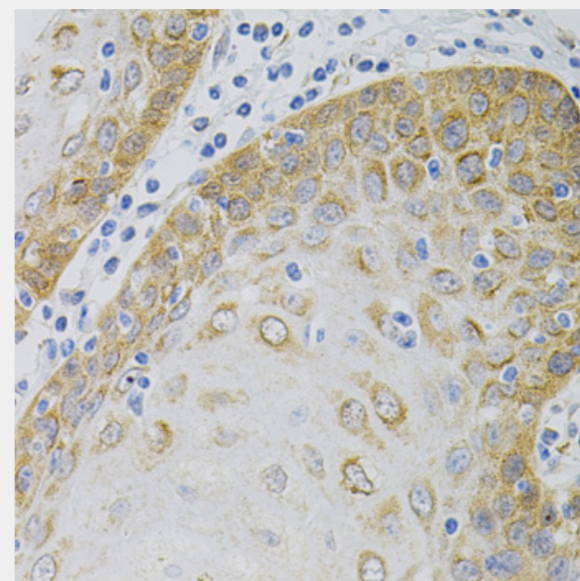
Exposure time: 30s.



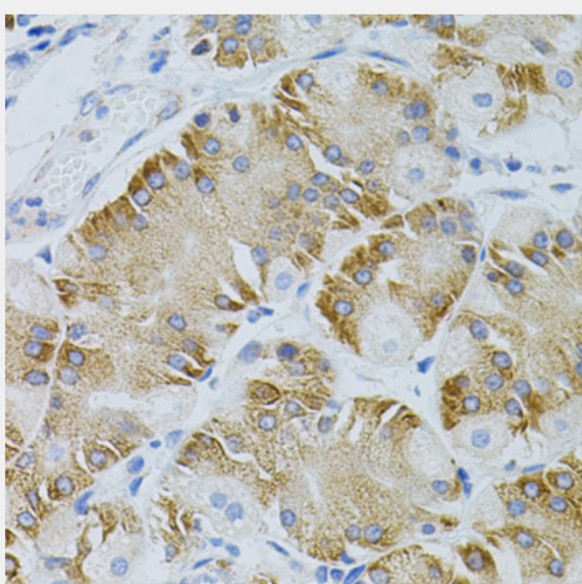
Immunohistochemistry of paraffin-embedded mouse brain using EEF1G antibody (40x lens).



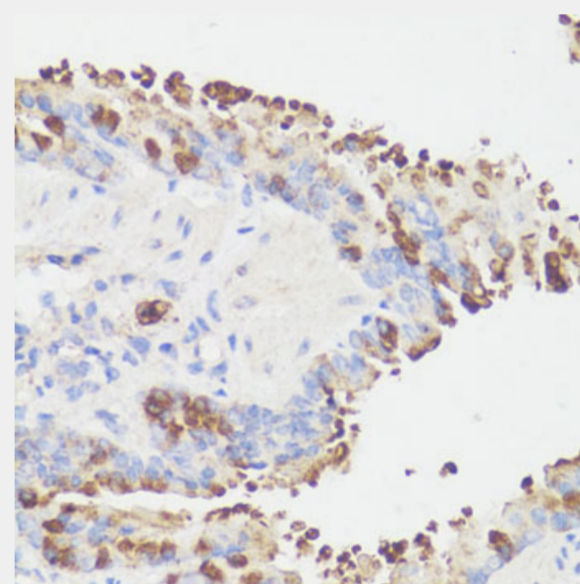
Immunohistochemistry of paraffin-embedded rat brain using EEF1G antibody (40x lens).



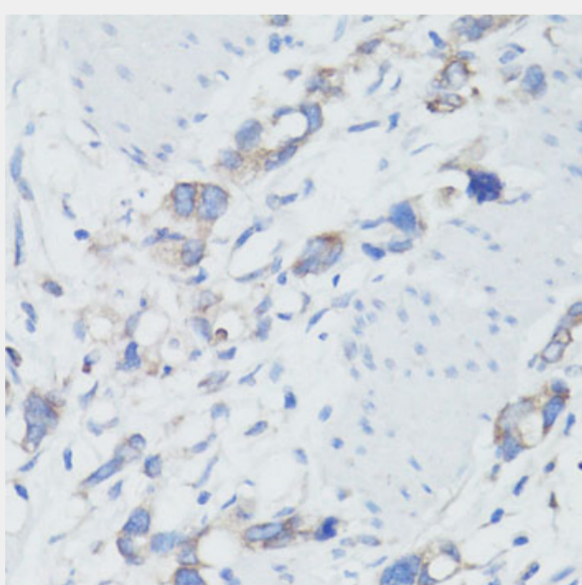
Immunohistochemistry of paraffin-embedded human esophagus using EEF1G antibody (40x lens).



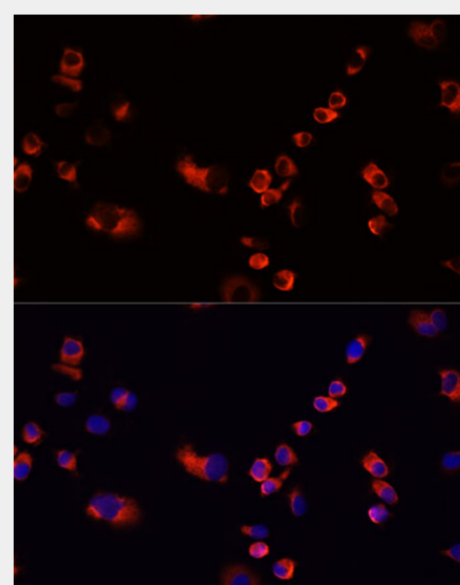
Immunohistochemistry of paraffin-embedded human stomach using EEF1G antibody (40x lens).



Immunohistochemistry of paraffin-embedded human liver cancer using EEF1G antibody at dilution of 1:100 (40x lens).



Immunohistochemistry of paraffin-embedded human gastric cancer using EEF1G antibody at dilution of 1:100 (40x lens).



Immunofluorescence analysis of A431 cells using EEF1G antibody at dilution of 1:100. Blue: DAPI for nuclear staining.

All products are for RESEARCH USE ONLY. Not for diagnostic & therapeutic purposes!