

# CTSE Polyclonal Antibody

Catalog No: tcba7677



## Available Sizes

---

**Size:** 50ul

**Size:** 100ul

**Size:** 200ul



## Specifications

---

**Application:**

WB,IHC,IF

**Research Area:**

Immunology,Innate Immunity,

**Species Reactivity:**

Human,Mouse

**Host Species:**

Rabbit

**Isotype:**

IgG

**Form:**

Liquid

**Storage Buffer:**

Buffer: PBS with 0.02% sodium azide, 50% glycerol, pH7.3.

**Recommended Dilution:**

WB 1:500 - 1:2000

IHC 1:50 - 1:200

IF 1:50 - 1:200

**Storage Instruction:**

Store at -20°C. Avoid freeze / thaw cycles.

**Alternative Names:**

CATE

**SwissProt:**

P14091

**Gene ID:**

1510 (human);

**Calculated Molecular Weight:**

39kDa/42kDa/43kDa

**Purification:**

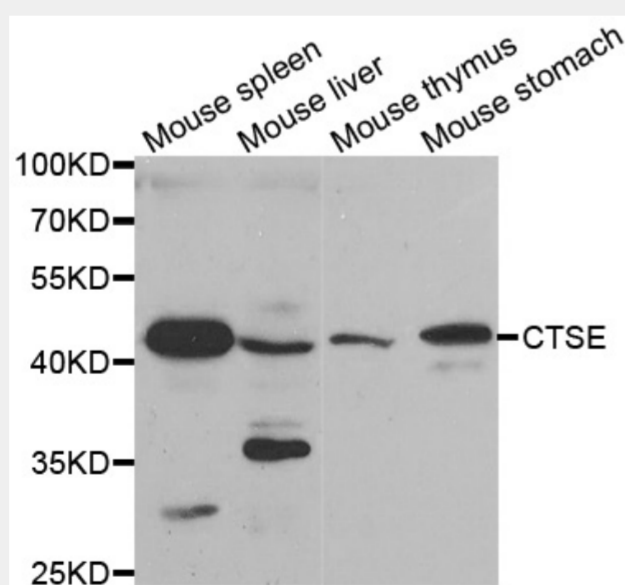
Affinity purification

**Cellular Location:**

Endosome,

**Product Description**

This gene encodes a member of the A1 family of peptidases. Alternative splicing of this gene results in multiple transcript variants. At least one of these variants encodes a preproprotein that is proteolytically processed to generate the mature enzyme. This enzyme, an aspartic endopeptidase, may be involved in antigen processing and the maturation of secretory proteins. Elevated expression of this gene has been observed in neurodegeneration.

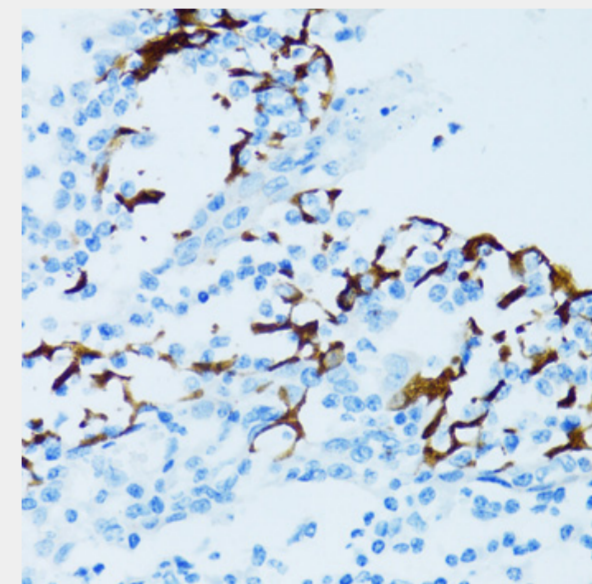


Western blot analysis of extracts of various cell lines, using CTSE antibody at 1:200 dilution.

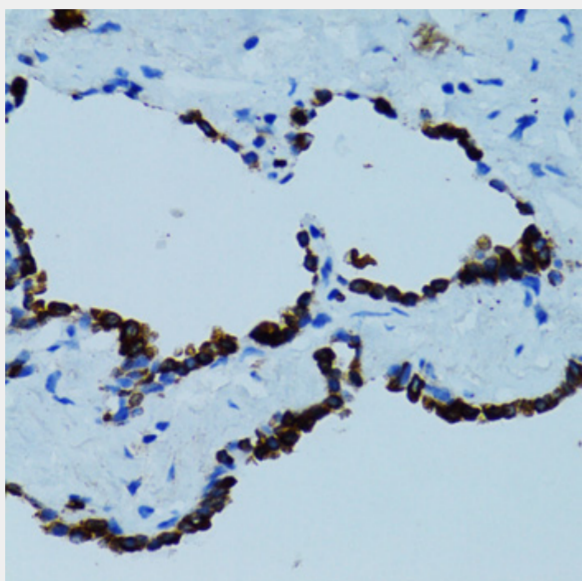
Secondary antibody: HRP Goat Anti-Rabbit IgG (H+L) at 1:10000 dilution.

Lysates/proteins: 25ug per lane.

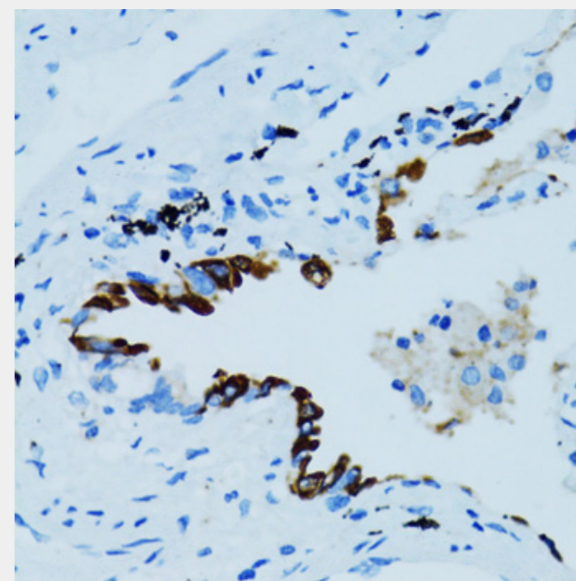
Blocking buffer: 3% nonfat dry milk in TBST.



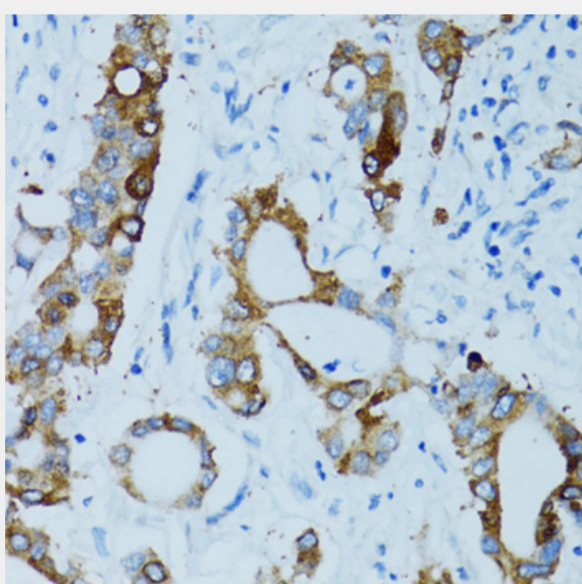
Immunohistochemistry of paraffin-embedded human tonsil using CTSE antibody at dilution of 1:100 (40x lens).



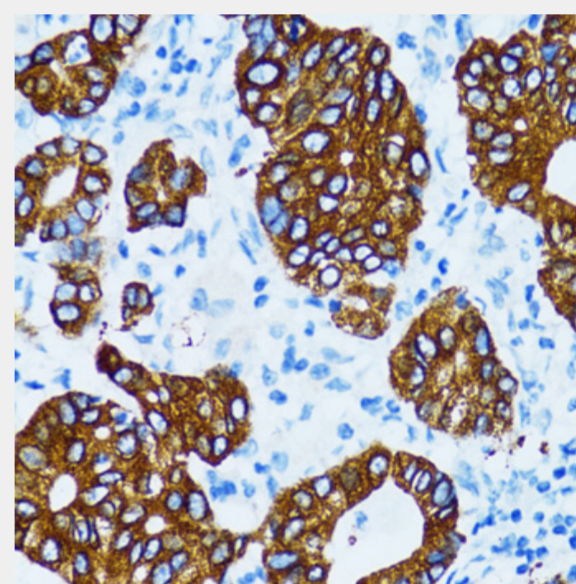
Immunohistochemistry of paraffin-embedded human lung using CTSE antibody at dilution of 1:100 (40x lens).



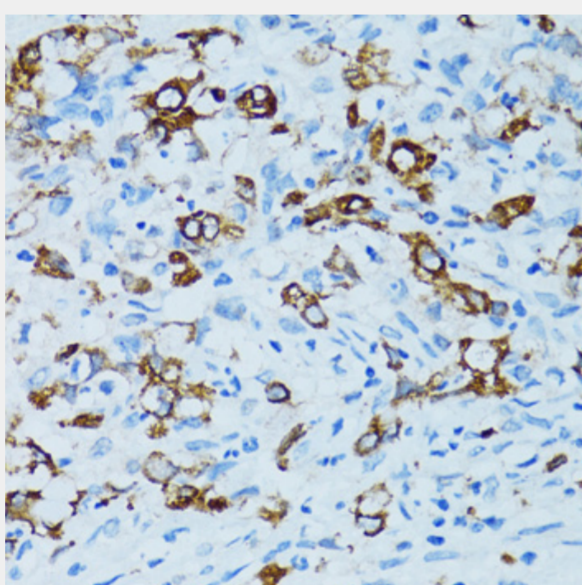
Immunohistochemistry of paraffin-embedded human lung cancer using CTSE antibody at dilution of 1:100 (40x lens).



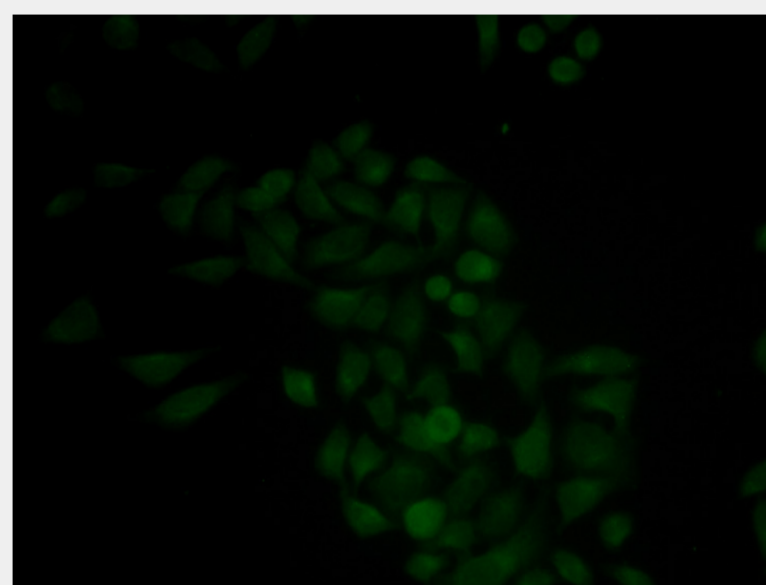
Immunohistochemistry of paraffin-embedded human colon carcinoma using CTSE antibody at dilution of 1:100 (40x lens).



Immunohistochemistry of paraffin-embedded human gastric cancer using CTSE antibody at dilution of 1:100 (40x lens).



Immunohistochemistry of paraffin-embedded human uterine cancer using CTSE antibody at dilution of 1:100 (40x lens).



Immunofluorescence analysis of MCF-7 cells using CTSE antibody.

All products are for RESEARCH USE ONLY. Not for diagnostic & therapeutic purposes!