

# VIM Polyclonal Antibody

Catalog No: tcba7670

**KO** VALIDATED



## Available Sizes

Size: 50ul

Size: 100ul

Size: 200ul



## Specifications

### Application:

WB,IHC,IF

### Research Area:

Cancer,Stem cells,Neural Stem Cells,Tumor biomarkers,Neuroscience,

### Species Reactivity:

Human,Mouse,Rat

### Host Species:

Rabbit

### Isotype:

IgG

### Form:

Liquid

### Storage Buffer:

Buffer: PBS with 0.02% sodium azide, 50% glycerol, pH7.3.

### Recommended Dilution:

WB 1:500 - 1:1000

IHC 1:50 - 1:200

IF 1:50 - 1:200

**Storage Instruction:**

Store at -20°C. Avoid freeze / thaw cycles.

---

**Alternative Names:**

CTRCT30;HEL113

---

**SwissProt:**

P08670

---

**Gene ID:**

7431 (human);

---

**Calculated Molecular Weight:**

53kDa

---

**Purification:**

Affinity purification

---

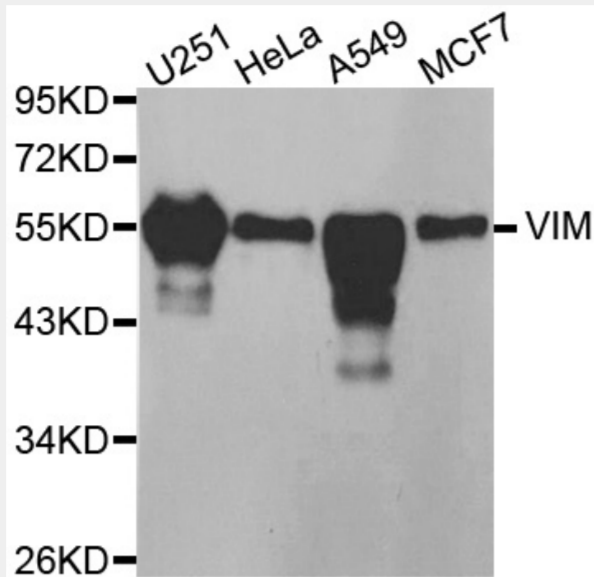
**Cellular Location:**

Cytoplasm,

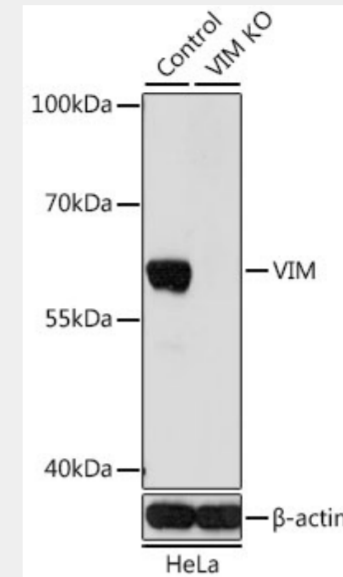
---

**Product Description**

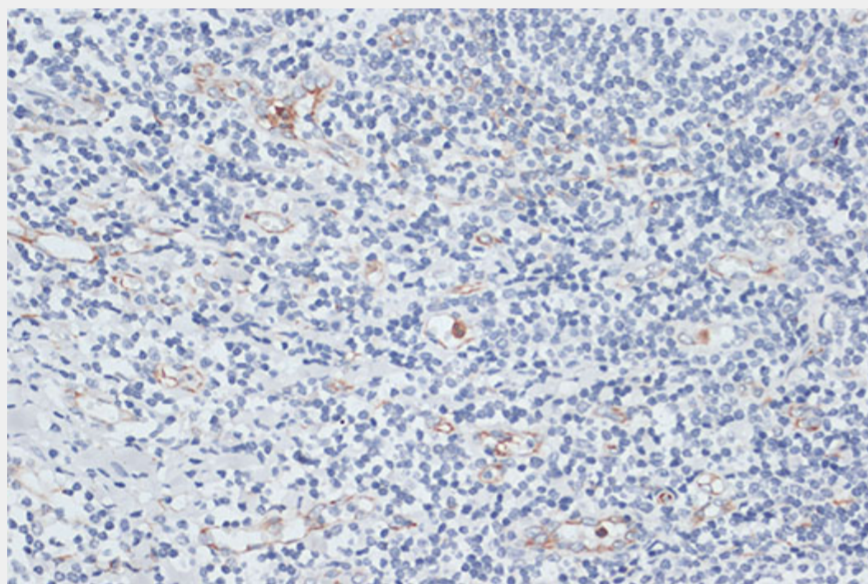
This gene encodes a member of the intermediate filament family. Intermediate filaments, along with microtubules and actin microfilaments, make up the cytoskeleton. The protein encoded by this gene is responsible for maintaining cell shape, integrity of the cytoplasm, and stabilizing cytoskeletal interactions. It is also involved in the immune response, and controls the transport of low-density lipoprotein (LDL)-derived cholesterol from a lysosome to the site of esterification. It functions as an organizer of a number of critical proteins involved in attachment, migration, and cell signaling. Mutations in this gene causes a dominant, pulverulent cataract.



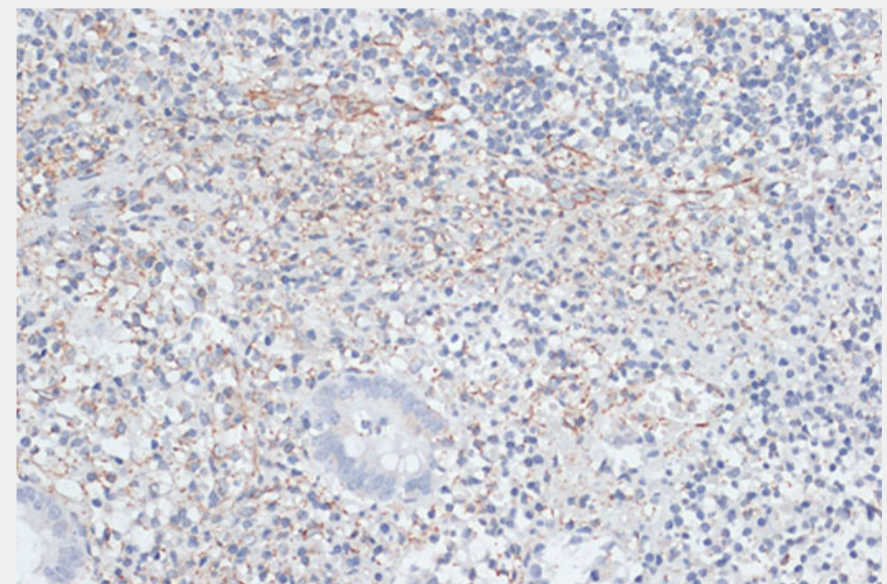
Western blot analysis of extracts of various cell lines, using VIM antibody at 1:200 dilution.  
Secondary antibody: HRP Goat Anti-Rabbit IgG (H+L) at 1:10000 dilution.  
Lysates/proteins: 25ug per lane.  
Blocking buffer: 3% nonfat dry milk in TBST.



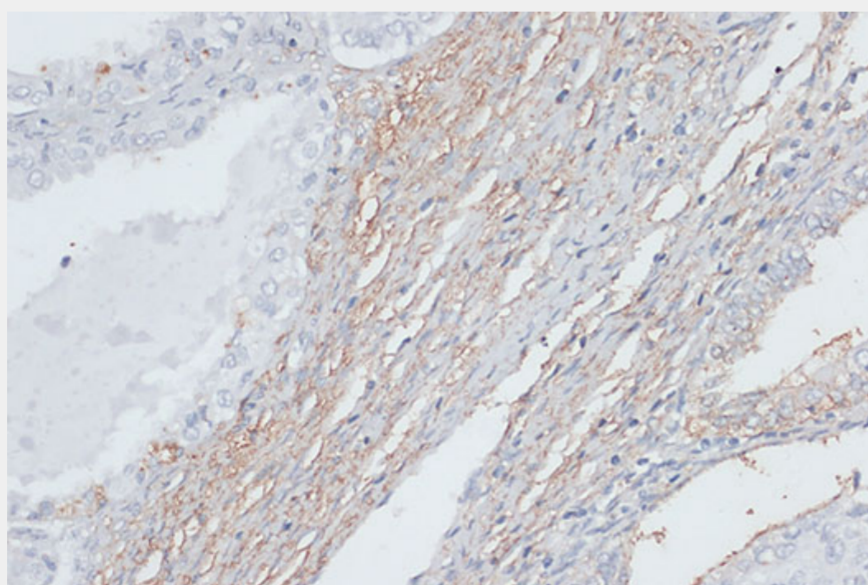
Western blot analysis of extracts from normal (control) and VIM knockout (KO) HeLa cells, using VIM antibody at 1:200 dilution.  
Secondary antibody: HRP Goat Anti-Rabbit IgG (H+L) at 1:10000 dilution.  
Lysates/proteins: 25ug per lane.  
Blocking buffer: 3% nonfat dry milk in TBST.  
Detection: ECL Basic Kit.  
Exposure time: 1s.



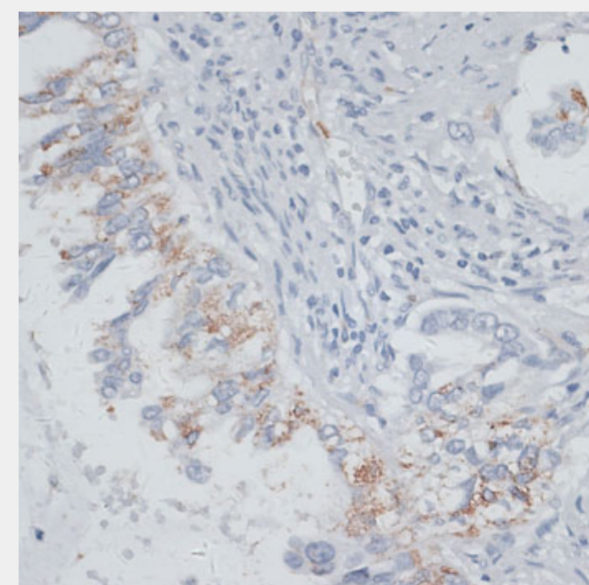
Immunohistochemistry of paraffin-embedded human tonsil using VIM antibody at dilution of 1:100 (40x lens).



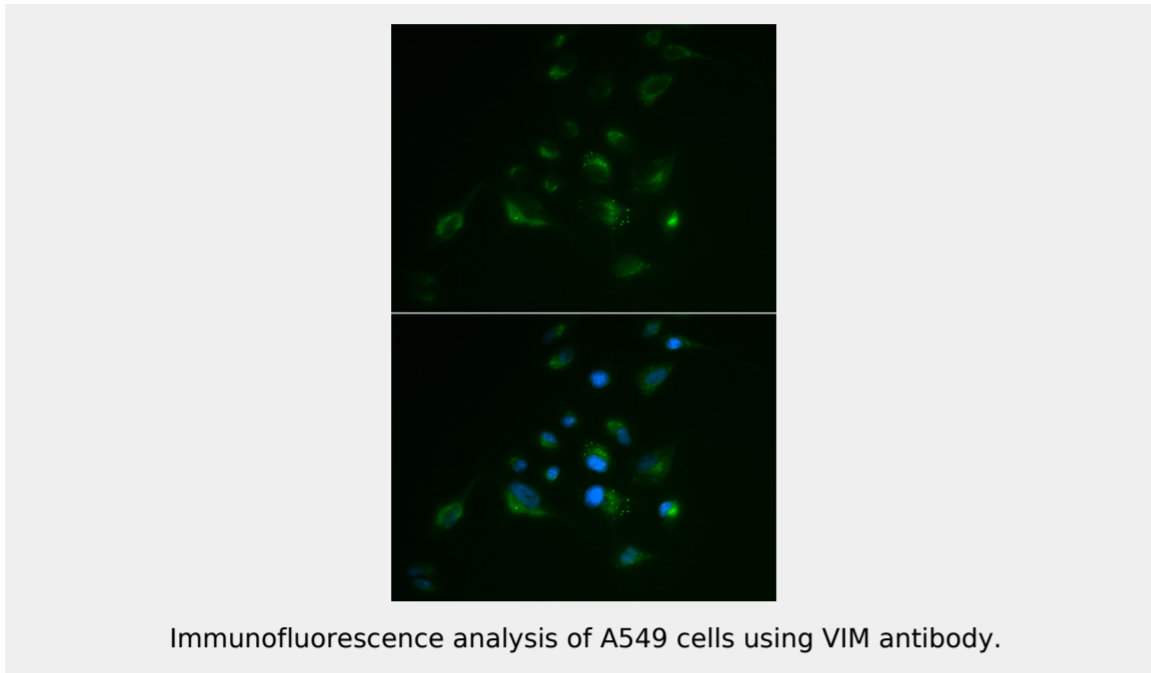
Immunohistochemistry of paraffin-embedded human vermiform appendix using VIM antibody at dilution of 1:100 (40x lens).



Immunohistochemistry of paraffin-embedded human uterine cancer using VIM antibody at dilution of 1:100 (40x lens).



Immunohistochemistry of paraffin-embedded human lung cancer using VIM antibody at dilution of 1:100 (40x lens).



All products are for RESEARCH USE ONLY. Not for diagnostic & therapeutic purposes!