

OCLN Polyclonal Antibody

Catalog No: tcba7623



Available Sizes

Size: 50ul

Size: 100ul

Size: 200ul



Specifications

Application:

WB,IHC,IF

Species Reactivity:

Human,Mouse,Rat

Host Species:

Rabbit

Isotype:

IgG

Form:

Liquid

Storage Buffer:

Buffer: PBS with 0.02% sodium azide, 50% glycerol, pH7.3.

Recommended Dilution:

WB 1:1000 - 1:2000

IHC 1:50 - 1:200

IF 1:50 - 1:200

Storage Instruction:

Store at -20°C. Avoid freeze / thaw cycles.

Alternative Names:

BLCPMG;PPP1R115;BLCPMG;PPP1R115;PTORCH1

SwissProt:

Q16625

Gene ID:

100506658 (human);

Calculated Molecular Weight:

8kDa/23kDa/31kDa/52kDa/54kDa/59kDa

Purification:

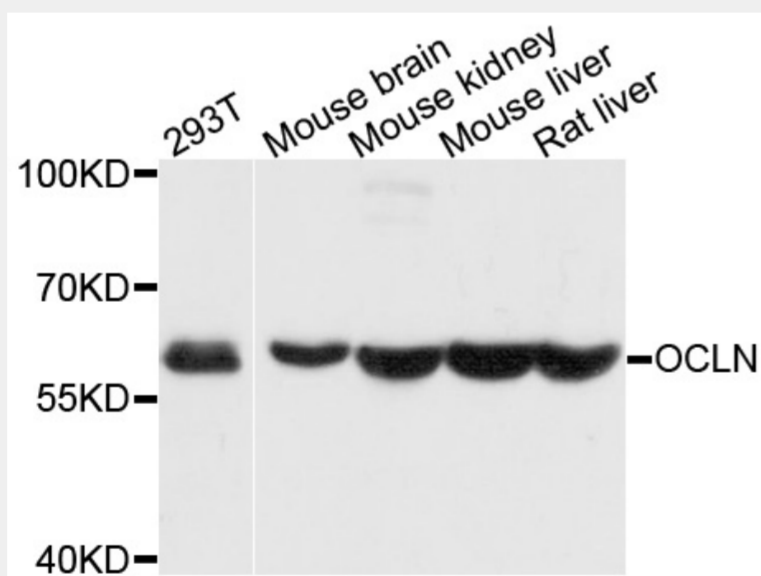
Affinity purification

Cellular Location:

Cell junction,Membrane,Multi-pass membrane protein,tight junction,

Product Description

This gene encodes an integral membrane protein that is required for cytokine-induced regulation of the tight junction paracellular permeability barrier. Mutations in this gene are thought to be a cause of band-like calcification with simplified gyration and polymicrogyria (BLC-PMG), an autosomal recessive neurologic disorder that is also known as pseudo-TORCH syndrome. Alternative splicing results in multiple transcript variants. A related pseudogene is present 1.5 Mb downstream on the q arm of chromosome 5.



Western blot analysis of extracts of various cell lines, using OCLN antibody at 1:1000 dilution.

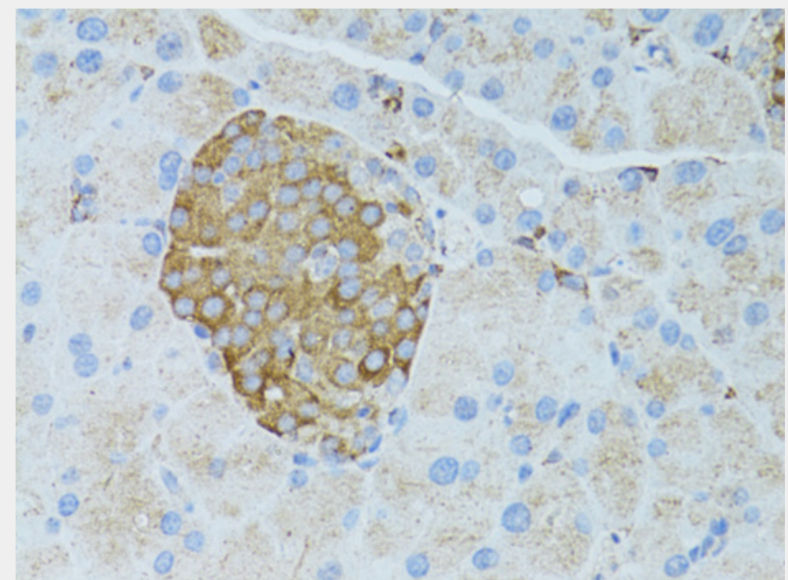
Secondary antibody: HRP Goat Anti-Rabbit IgG (H+L) at 1:10000 dilution.

Lysates/proteins: 25ug per lane.

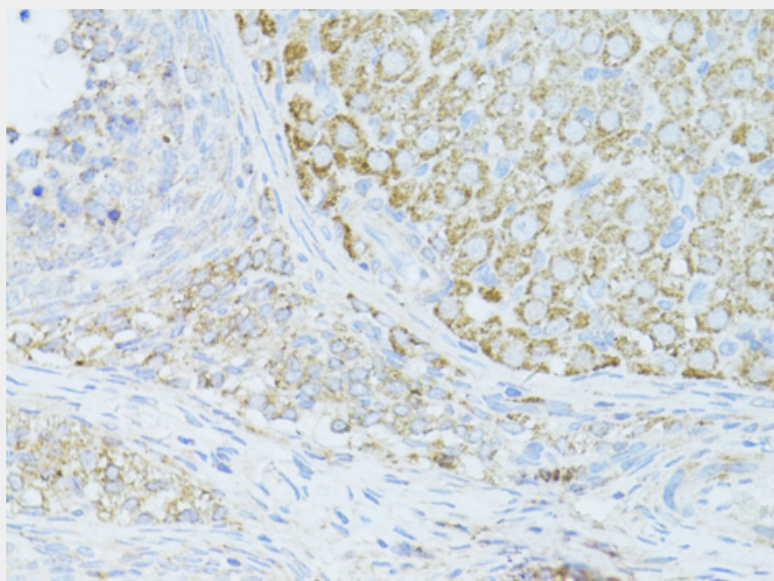
Blocking buffer: 3% nonfat dry milk in TBST.

Detection: ECL Basic Kit.

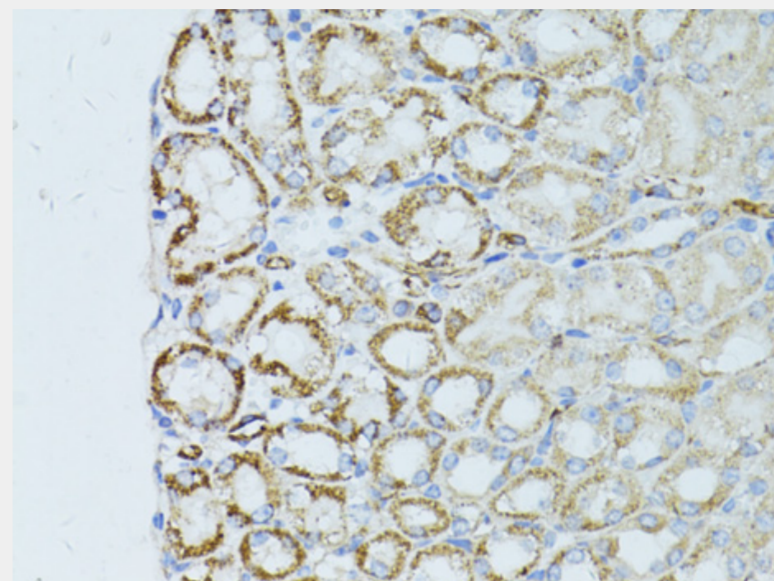
Exposure time: 1s.



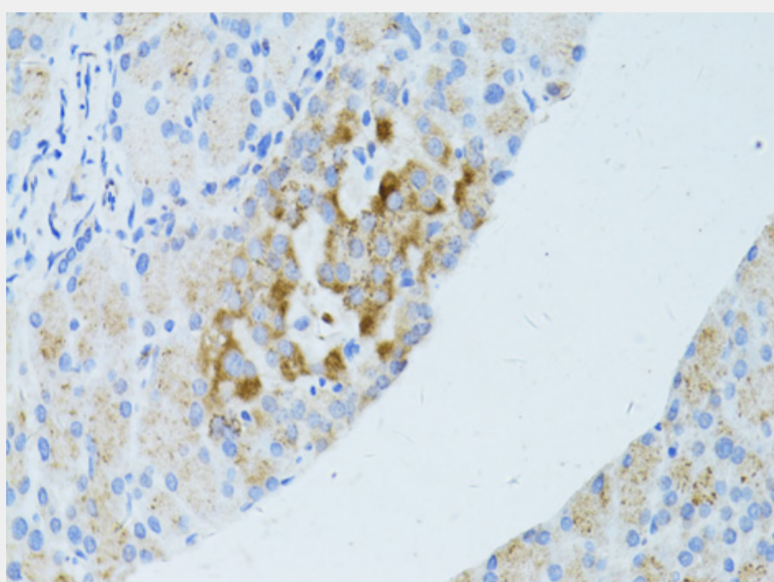
Immunohistochemistry of paraffin-embedded rat pancreas using OCLN antibody at dilution of 1:100 (40x lens).



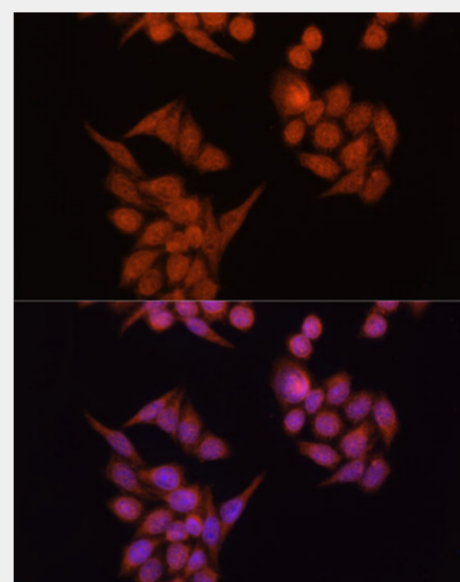
Immunohistochemistry of paraffin-embedded mouse ovary using OCLN antibody at dilution of 1:100 (40x lens).



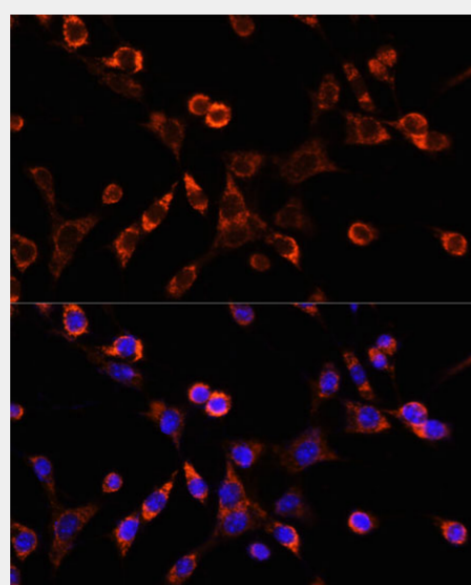
Immunohistochemistry of paraffin-embedded mouse kidney using OCLN antibody at dilution of 1:100 (40x lens).



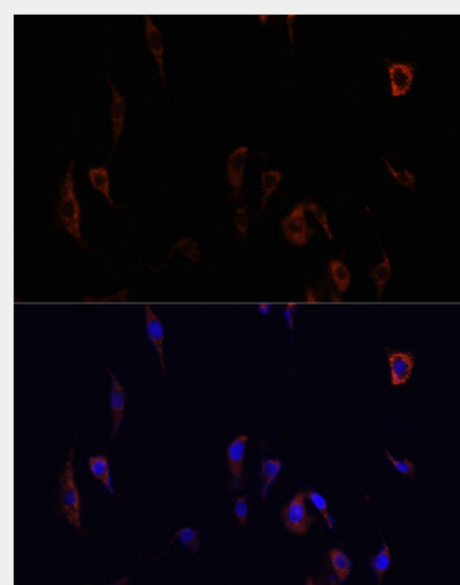
Immunohistochemistry of paraffin-embedded mouse pancreas using OCLN antibody at dilution of 1:100 (40x lens).



Immunofluorescence analysis of HeLa cells using OCLN antibody at dilution of 1:100. Blue: DAPI for nuclear staining.



Immunofluorescence analysis of NIH/3T3 cells using OCLN antibody at dilution of 1:100. Blue: DAPI for nuclear staining.



Immunofluorescence analysis of PC12 cells using OCLN antibody at dilution of 1:100. Blue: DAPI for nuclear staining.

All products are for RESEARCH USE ONLY. Not for diagnostic & therapeutic purposes!