

# AIFM1 Polyclonal Antibody

Catalog No: tcba7591

**KO** VALIDATED



## Available Sizes

Size: 50ul

Size: 100ul

Size: 200ul



## Specifications

### Application:

WB,IHC,IF

### Research Area:

Cancer,Apoptosis,

### Species Reactivity:

Human,Mouse

### Host Species:

Rabbit

### Isotype:

IgG

### Form:

Liquid

### Storage Buffer:

Buffer: PBS with 0.02% sodium azide, 50% glycerol, pH7.3.

### Recommended Dilution:

WB 1:500 - 1:2000

IHC 1:50 - 1:200

IF 1:50 - 1:200

**Storage Instruction:**

Store at -20°C. Avoid freeze / thaw cycles.

---

**Alternative Names:**

AIF;CMT2D;CMTX4;COWCK;COXPD6;DFNX5;NADMR;NAMSD;PDCD8

---

**SwissProt:**

O95831

---

**Gene ID:**

9131 (human);

---

**Calculated Molecular Weight:**

26kDa/28kDa/35kDa/66kDa

---

**Purification:**

Affinity purification

---

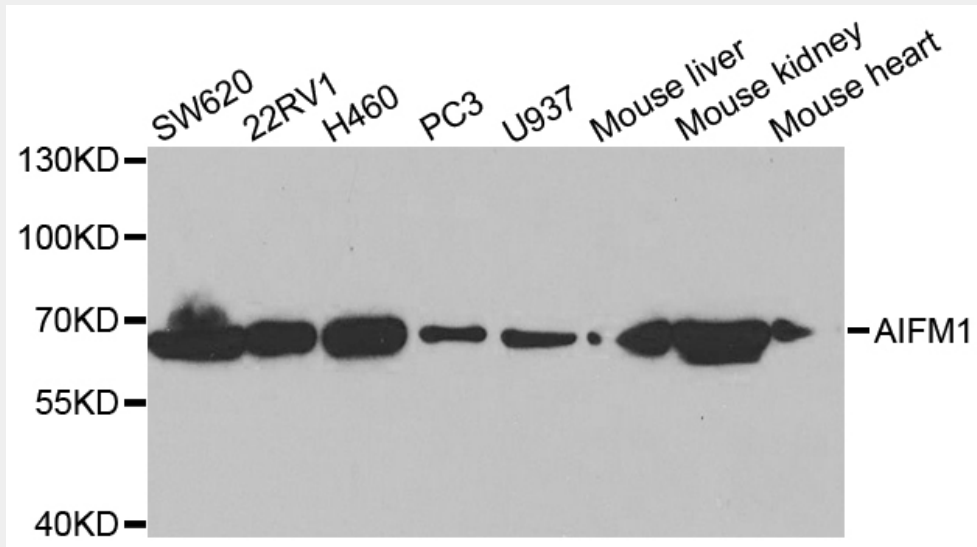
**Cellular Location:**

Cytoplasm,Mitochondrion inner membrane,Mitochondrion intermembrane space,Nucleus,perinuclear region,

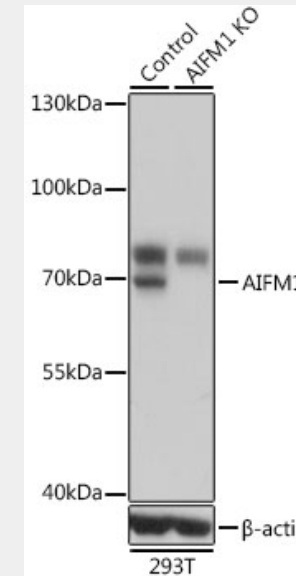
---

**Product Description**

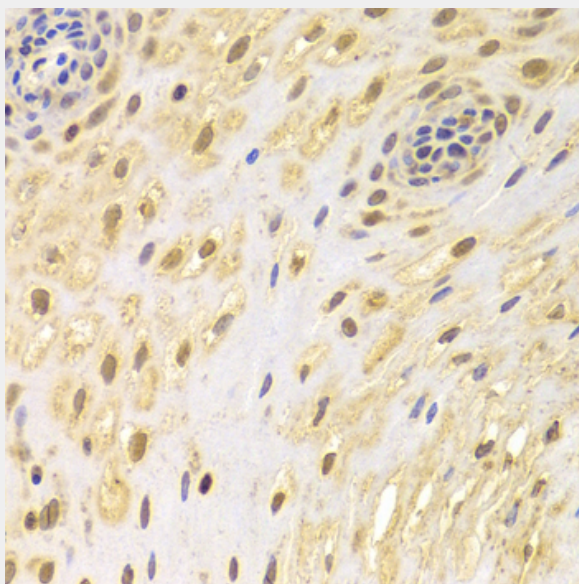
This gene encodes a flavoprotein essential for nuclear disassembly in apoptotic cells, and it is found in the mitochondrial intermembrane space in healthy cells. Induction of apoptosis results in the translocation of this protein to the nucleus where it affects chromosome condensation and fragmentation. In addition, this gene product induces mitochondria to release the apoptogenic proteins cytochrome c and caspase-9. Mutations in this gene cause combined oxidative phosphorylation deficiency 6 (COXPD6), a severe mitochondrial encephalomyopathy, as well as Cowchock syndrome, also known as X-linked recessive Charcot-Marie-Tooth disease-4 (CMTX-4), a disorder resulting in neuropathy, and axonal and motor-sensory defects with deafness and mental retardation. Alternative splicing results in multiple transcript variants. A related pseudogene has been identified on chromosome 10.



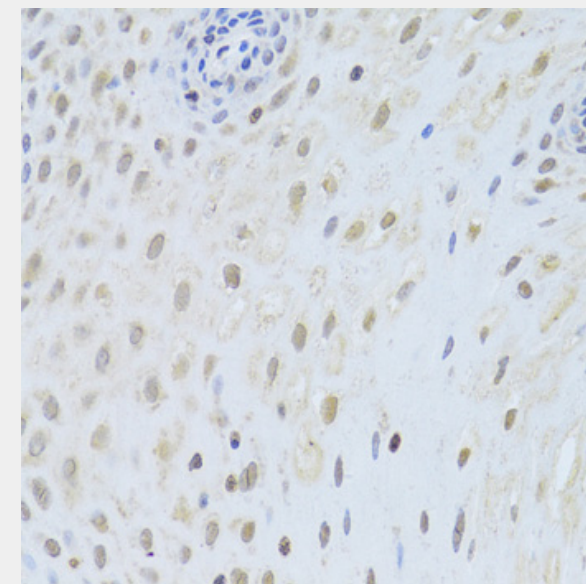
Western blot analysis of extracts of various cell lines, using AIFM1 antibody at 1:1000 dilution.  
Secondary antibody: HRP Goat Anti-Rabbit IgG (H+L) at 1:10000 dilution.  
Lysates/proteins: 25ug per lane.  
Blocking buffer: 3% nonfat dry milk in TBST.



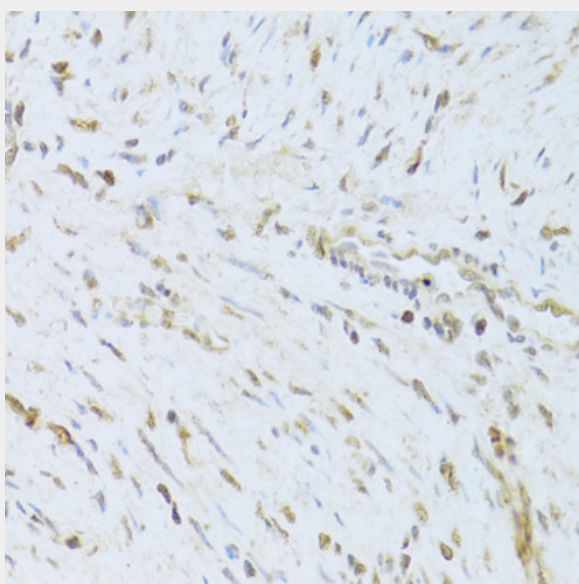
Western blot analysis of extracts from normal (control) and AIFM1 knockout (KO) 293T cells, using AIFM1 antibody at 1:1000 dilution.  
Secondary antibody: HRP Goat Anti-Rabbit IgG (H+L) at 1:10000 dilution.  
Lysates/proteins: 25ug per lane.  
Blocking buffer: 3% nonfat dry milk in TBST.  
Detection: ECL Basic Kit.  
Exposure time: 1s.



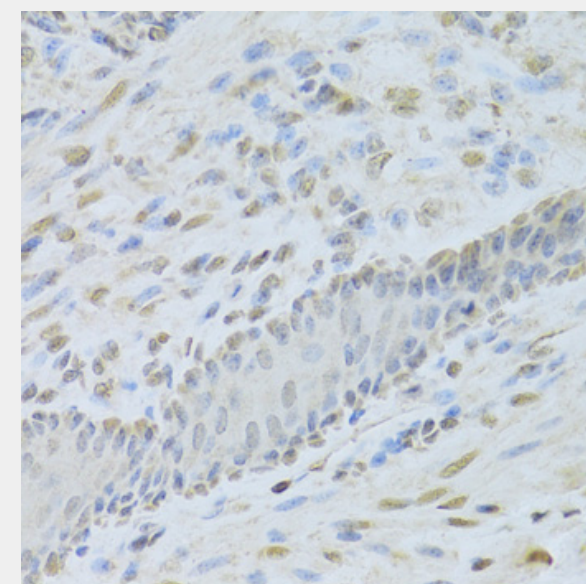
Immunohistochemistry of paraffin-embedded human esophagus using AIFM1 Antibody at dilution of 1:100 (40x lens).



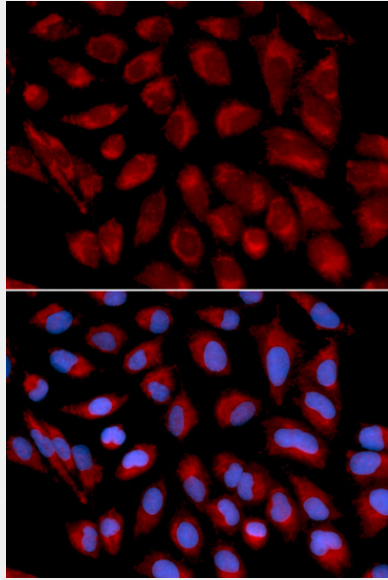
Immunohistochemistry of paraffin-embedded human esophagus using AIFM1 Antibody at dilution of 1:200 (40x lens).



Immunohistochemistry of paraffin-embedded human endometrium using AIFM1 Antibody at dilution of 1:200 (40x lens).



Immunohistochemistry of paraffin-embedded mouse esophagus using AIFM1 Antibody at dilution of 1:200 (40x lens).



Immunofluorescence analysis of U2OS cells using AIFM1 antibody. Blue: DAPI for nuclear staining.

All products are for RESEARCH USE ONLY. Not for diagnostic & therapeutic purposes!