

# HMGB1 Polyclonal Antibody

Catalog No: tcba7576



## Available Sizes

Size: 50ul

Size: 100ul

Size: 200ul



## Specifications

### Application:

WB,IHC,IF

### Research Area:

Cancer,Apoptosis,DNA Damage/Repair,RNA Binding Protein(RBP),Epigenetics,

### Species Reactivity:

Human,Mouse,Rat

### Host Species:

Rabbit

### Isotype:

IgG

### Form:

Liquid

### Storage Buffer:

Buffer: PBS with 0.02% sodium azide, 50% glycerol, pH7.3.

### Recommended Dilution:

WB 1:500 - 1:2000

IHC 1:50 - 1:200

IF 1:50 - 1:200

**Storage Instruction:**

Store at -20°C. Avoid freeze / thaw cycles.

---

**Alternative Names:**

HMG-1;HMG1;HMG3;SBP-1

---

**SwissProt:**

P09429

---

**Gene ID:**

3146 (human);

---

**Calculated Molecular Weight:**

24kDa

---

**Purification:**

Affinity purification

---

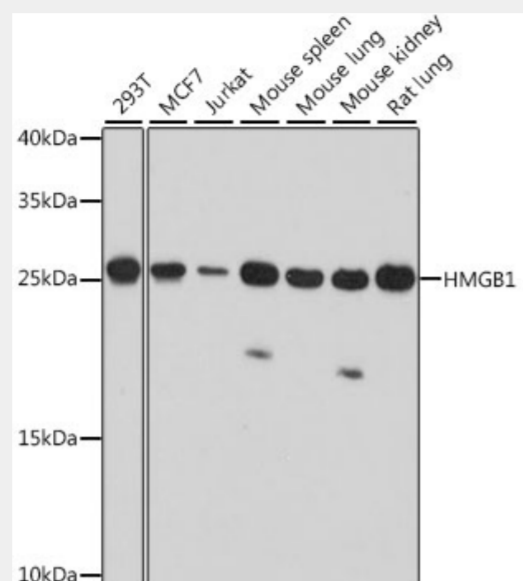
**Cellular Location:**

Cell membrane,Chromosome,Cytoplasm,Endoplasmic reticulum-Golgi intermediate compartment,Endosome,Extracellular side,Nucleus,Peripheral membrane protein,Secreted,

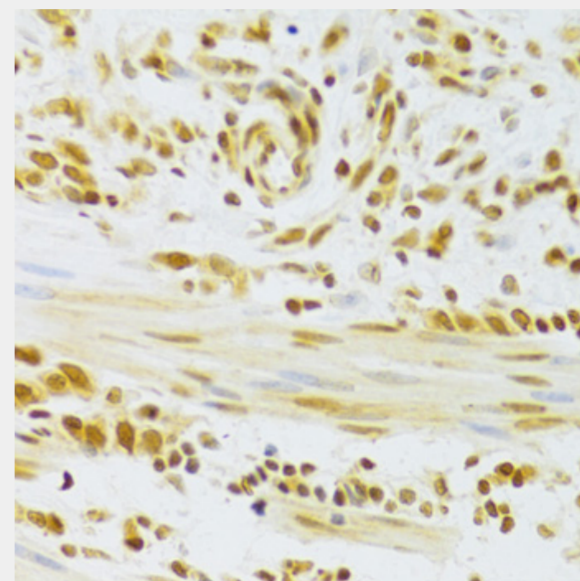
---

**Product Description**

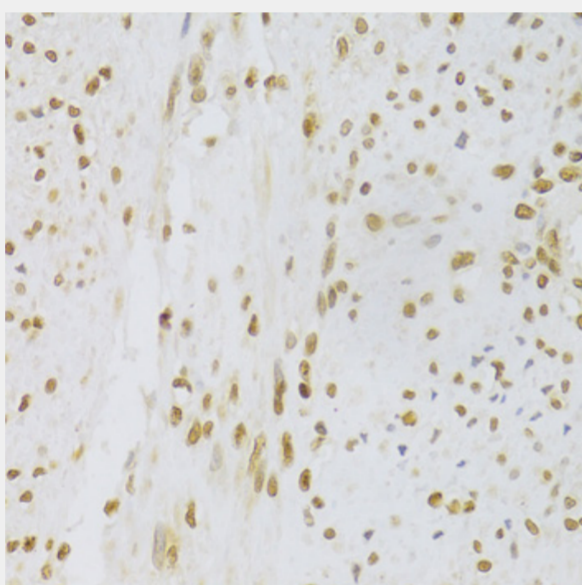
This gene encodes a protein that belongs to the High Mobility Group-box superfamily. The encoded non-histone, nuclear DNA-binding protein regulates transcription, and is involved in organization of DNA. This protein plays a role in several cellular processes, including inflammation, cell differentiation and tumor cell migration. Multiple pseudogenes of this gene have been identified. Alternative splicing results in multiple transcript variants that encode the same protein.



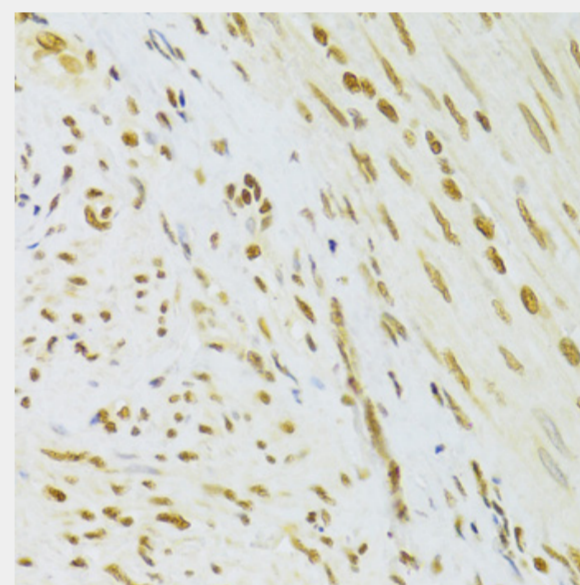
Western blot analysis of extracts of various cell lines, using HMGB1 antibody at 1:1000 dilution.  
Secondary antibody: HRP Goat Anti-Rabbit IgG (H+L) at 1:10000 dilution.  
Lysates/proteins: 25ug per lane.  
Blocking buffer: 3% nonfat dry milk in TBST.  
Detection: ECL Basic Kit.  
Exposure time: 60s.



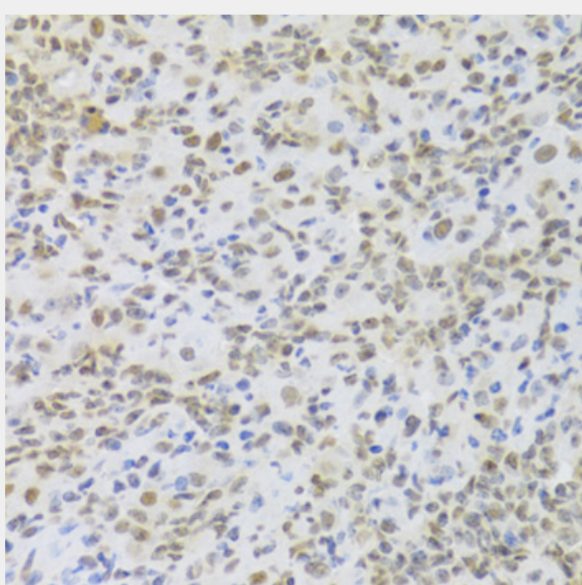
Immunohistochemistry of paraffin-embedded human gastric cancer using HMGB1 Antibody at dilution of 1:100 (40x lens).



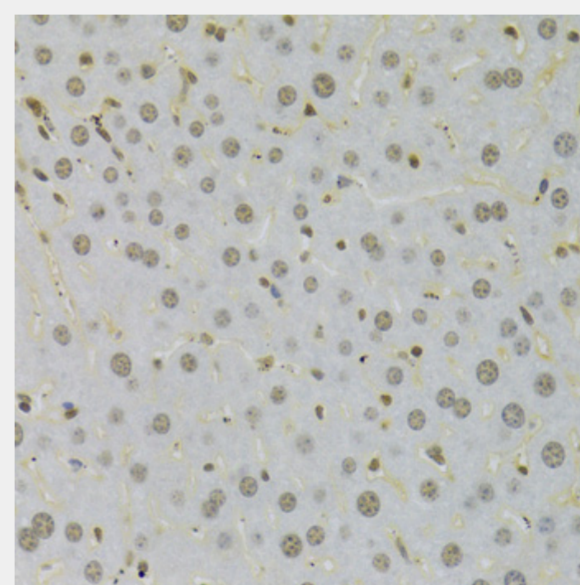
Immunohistochemistry of paraffin-embedded human leiomyoma of uterus using HMGB1 Antibody at dilution of 1:100 (40x lens).



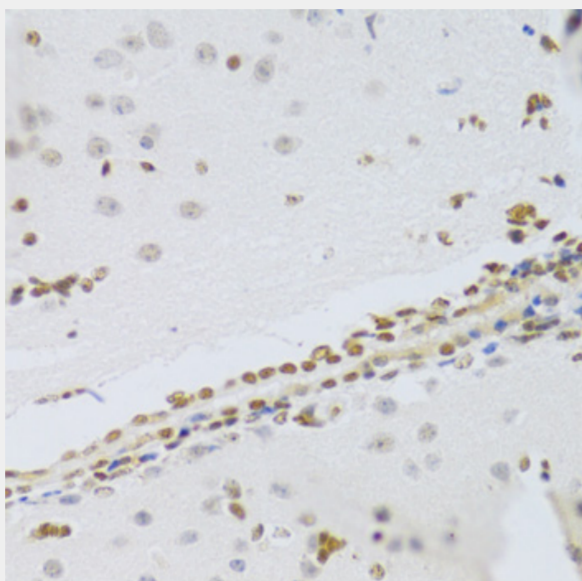
Immunohistochemistry of paraffin-embedded human adenomyosis using HMGB1 Antibody at dilution of 1:100 (40x lens).



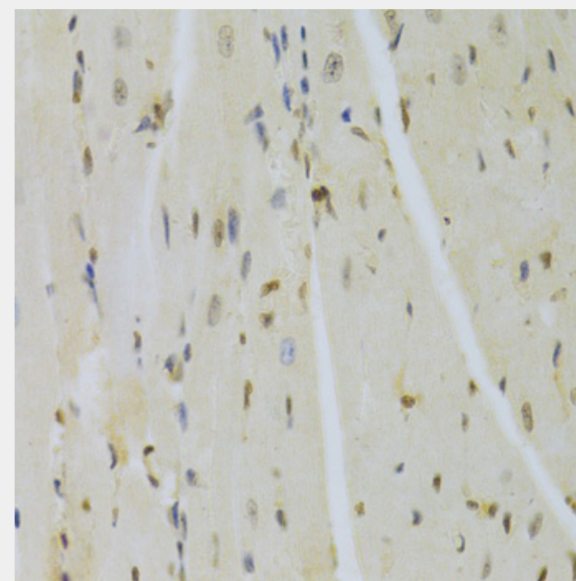
Immunohistochemistry of paraffin-embedded mouse lung using HMGB1 Antibody at dilution of 1:100 (40x lens).



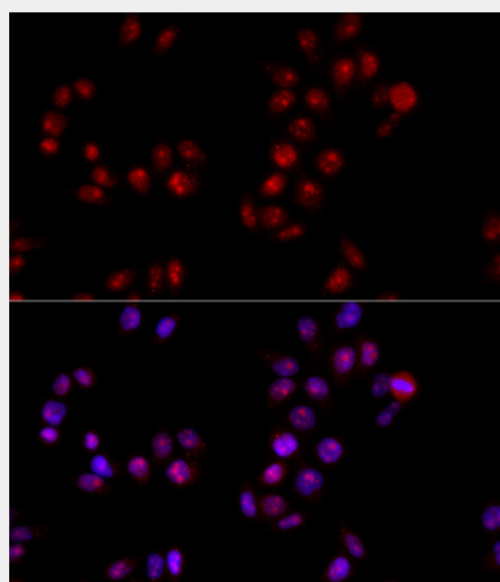
Immunohistochemistry of paraffin-embedded mouse liver using HMGB1 Antibody at dilution of 1:100 (40x lens).



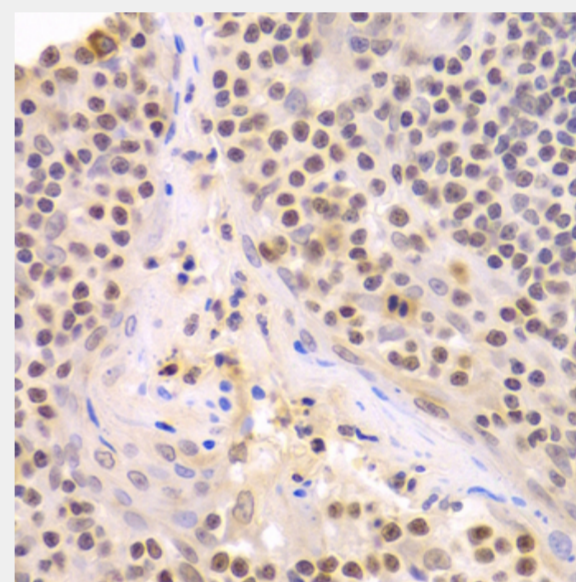
Immunohistochemistry of paraffin-embedded mouse brain using HMGB1 Antibody at dilution of 1:100 (40x lens).



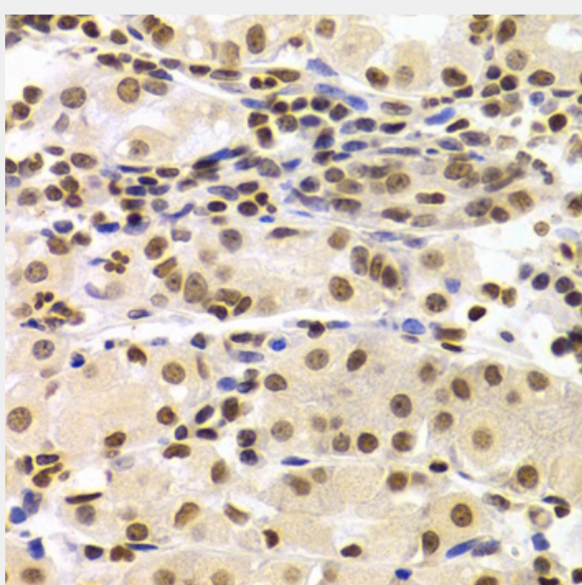
Immunohistochemistry of paraffin-embedded mouse heart using HMGB1 Antibody at dilution of 1:100 (40x lens).



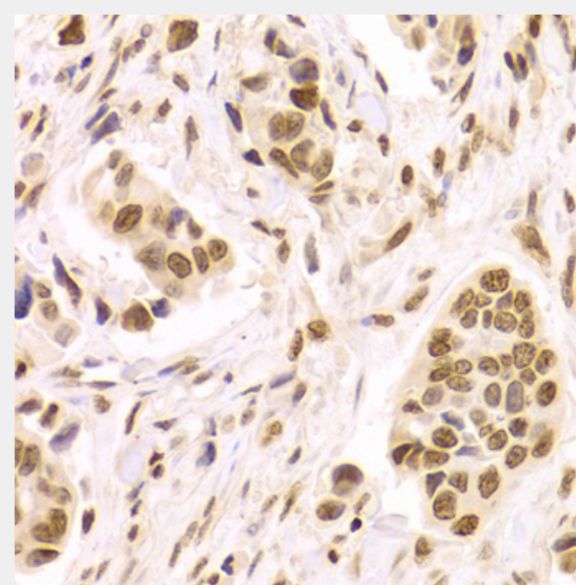
Immunofluorescence analysis of HeLa cells using HMGB1 antibody at dilution of 1:100 (40x lens). Blue: DAPI for nuclear staining.



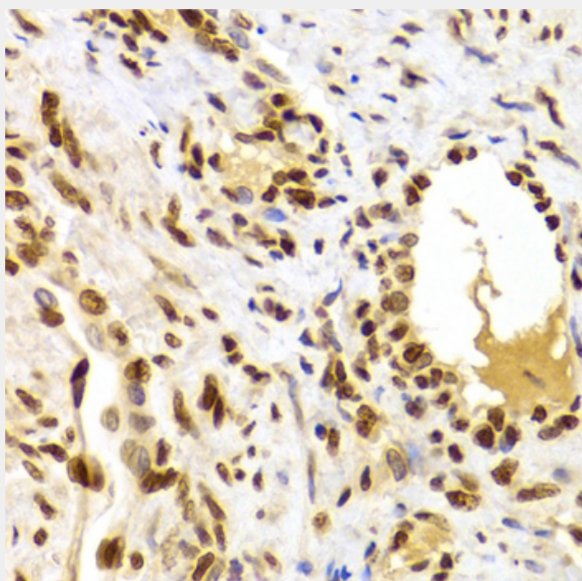
Immunohistochemistry of paraffin-embedded human amygdalitis using HMGB1 Antibody at dilution of 1:100 (40x lens).



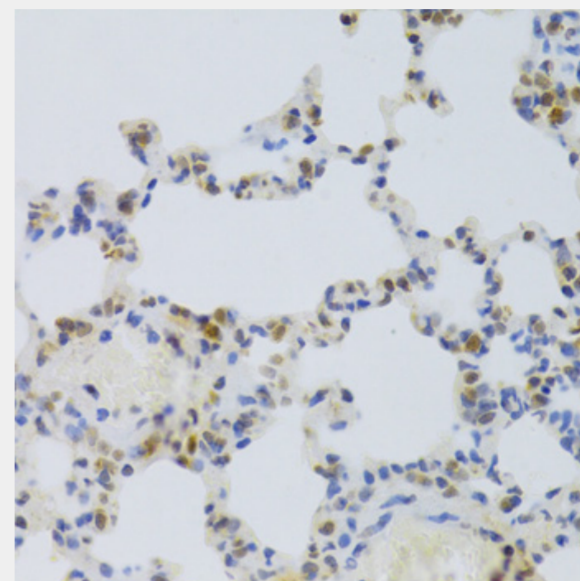
Immunohistochemistry of paraffin-embedded human stomach using HMGB1 Antibody at dilution of 1:100 (40x lens).



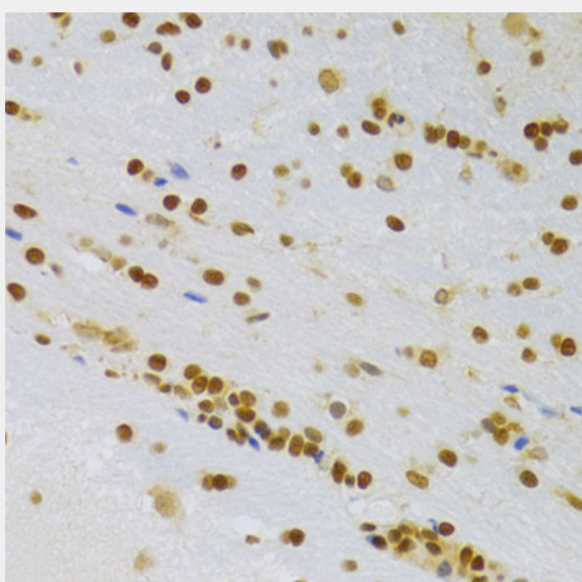
Immunohistochemistry of paraffin-embedded human breast cancer using HMGB1 Antibody at dilution of 1:100 (40x lens).



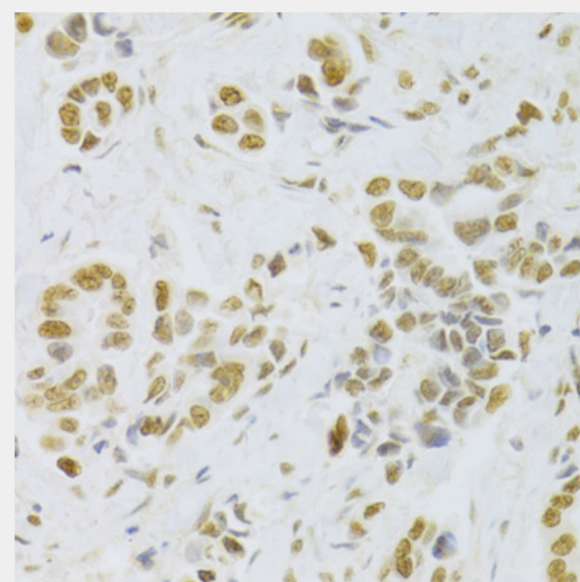
Immunohistochemistry of paraffin-embedded human adenomyosis using HMGB1 Antibody at dilution of 1:100 (40x lens).



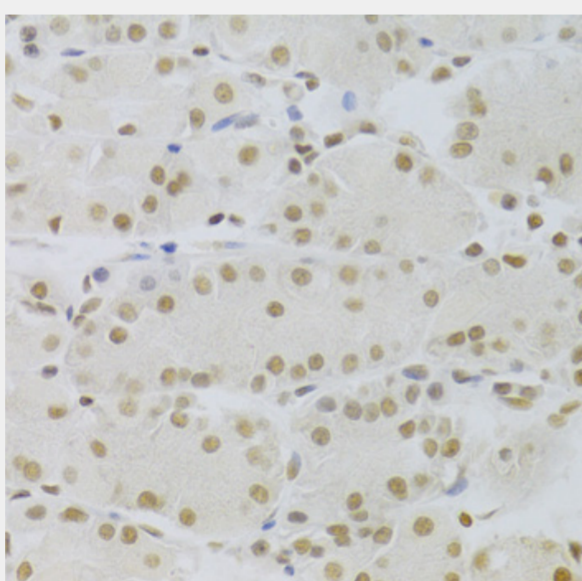
Immunohistochemistry of paraffin-embedded rat lung using HMGB1 Antibody at dilution of 1:100 (40x lens).



Immunohistochemistry of paraffin-embedded rat brain using HMGB1 Antibody at dilution of 1:100 (40x lens).



Immunohistochemistry of paraffin-embedded human breast cancer using HMGB1 Antibody at dilution of 1:100 (40x lens).



Immunohistochemistry of paraffin-embedded human stomach using HMGB1 Antibody at dilution of 1:100 (40x lens).

All products are for RESEARCH USE ONLY. Not for diagnostic & therapeutic purposes!