

# CREB1 Polyclonal Antibody

Catalog No: tcba7477



## Available Sizes

---

**Size:** 50ul

---

**Size:** 100ul

---

**Size:** 200ul

---



## Specifications

---

**Application:**

WB,IHC

---

**Research Area:**

Cancer,MAPK pathway,Neuroscience,Immunology,Innate Immunity,Neurodegeneration,MAPK/p38 pathway,MAPK/ERK pathway,Epigenetics,

---

**Species Reactivity:**

Human,Mouse,Rat

---

**Host Species:**

Rabbit

---

**Isotype:**

IgG

---

**Form:**

Liquid

---

**Storage Buffer:**

Buffer: PBS with 0.02% sodium azide, 50% glycerol, pH7.3.

---

**Recommended Dilution:**

WB 1:500 - 1:2000

IHC 1:50 - 1:200

---

**Storage Instruction:**

Store at -20°C. Avoid freeze / thaw cycles.

**Alternative Names:**

CREB;CREB-1

**SwissProt:**

P16220

**Gene ID:**

1385 (human);

**Calculated Molecular Weight:**

25kDa/35kDa/36kDa

**Purification:**

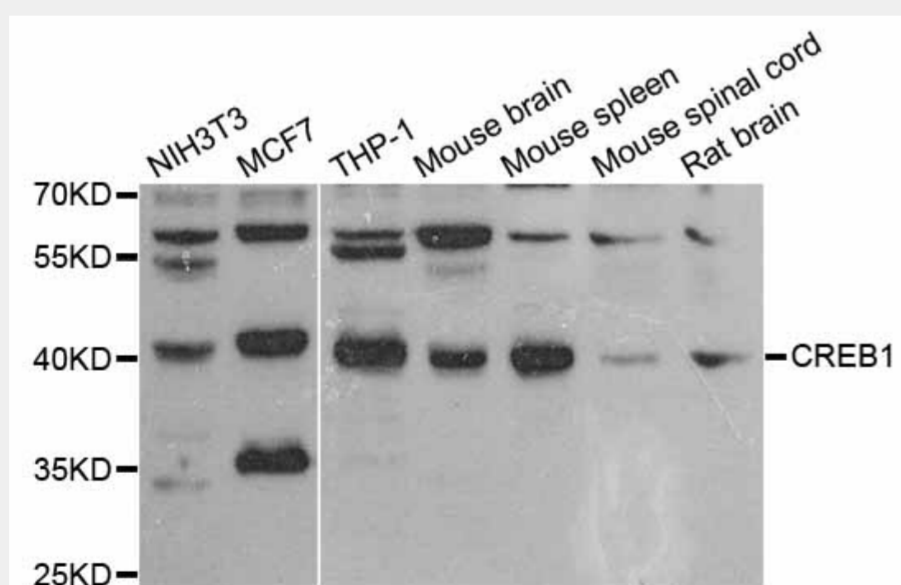
Affinity purification

**Cellular Location:**

Nucleus,

**Product Description**

This gene encodes a transcription factor that is a member of the leucine zipper family of DNA binding proteins. This protein binds as a homodimer to the cAMP-responsive element, an octameric palindrome. The protein is phosphorylated by several protein kinases, and induces transcription of genes in response to hormonal stimulation of the cAMP pathway. Alternate splicing of this gene results in several transcript variants encoding different isoforms.



Western blot analysis of extracts of various cell lines, using CREB1 antibody at 1:1000 dilution.

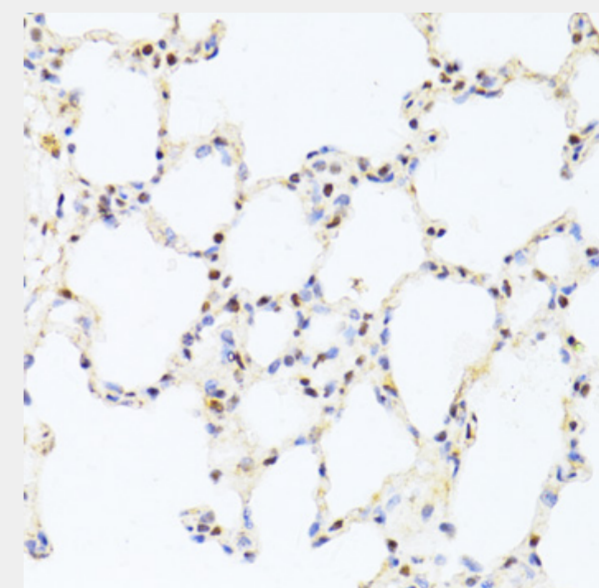
Secondary antibody: HRP Goat Anti-Rabbit IgG (H+L) at 1:10000 dilution.

Lysates/proteins: 25ug per lane.

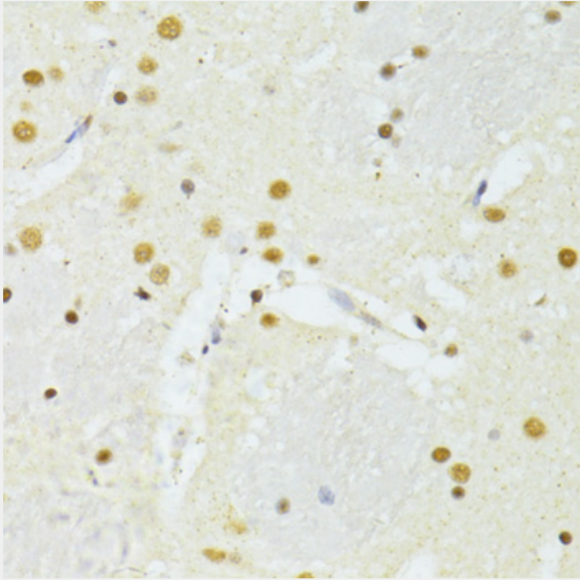
Blocking buffer: 3% nonfat dry milk in TBST.

Detection: ECL Basic Kit.

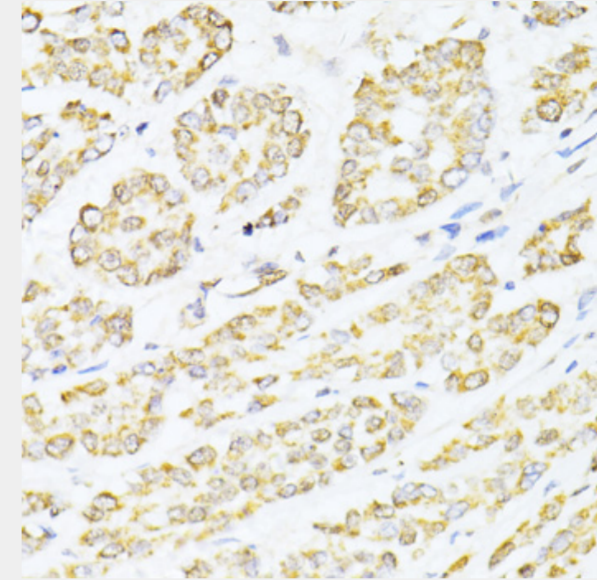
Exposure time: 90s.



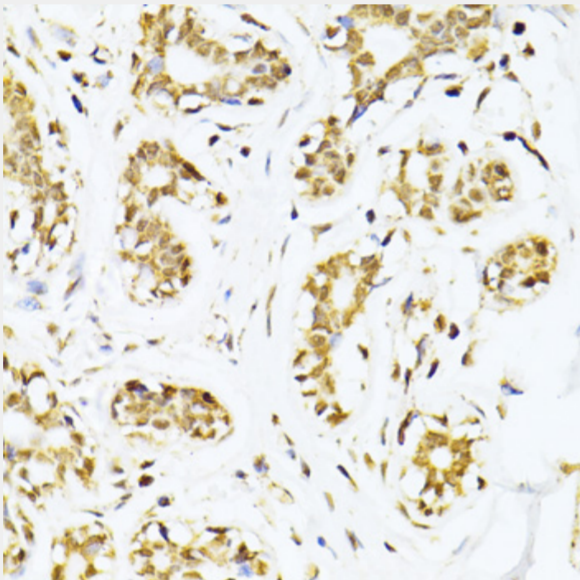
Immunohistochemistry of paraffin-embedded rat lung using CREB1 antibody at dilution of 1:100 (40x lens).



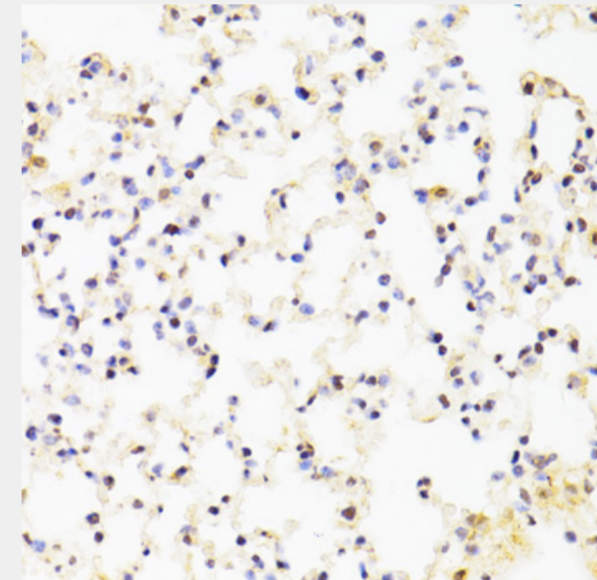
Immunohistochemistry of paraffin-embedded rat brain using CREB1 antibody at dilution of 1:100 (40x lens).



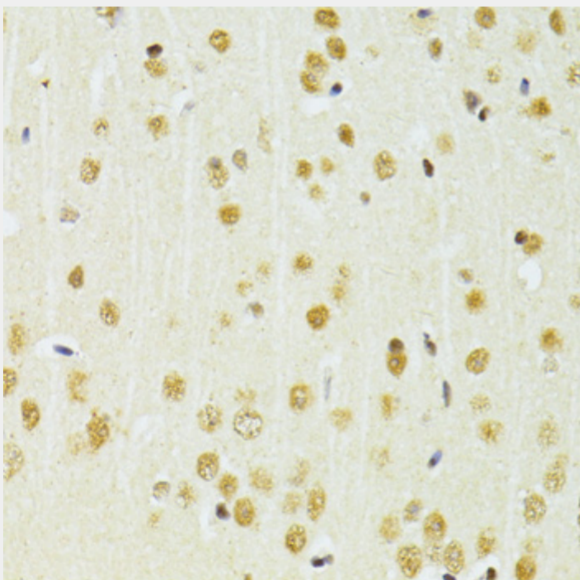
Immunohistochemistry of paraffin-embedded human colon carcinoma using CREB1 antibody at dilution of 1:100 (40x lens).



Immunohistochemistry of paraffin-embedded human breast cancer using CREB1 antibody at dilution of 1:100 (40x lens).



Immunohistochemistry of paraffin-embedded mouse lung using CREB1 antibody at dilution of 1:100 (40x lens).



Immunohistochemistry of paraffin-embedded mouse brain using CREB1 antibody at dilution of 1:100 (40x lens).

All products are for RESEARCH USE ONLY. Not for diagnostic & therapeutic purposes!