

DiMethyl-Histone H3-K36 pAb

Catalog No: tcba7458



Available Sizes

Size: 50ul

Size: 100ul

Size: 200ul



Specifications

Application:

WB,IHC,IF,IP,ChIP,ChIPseq

Research Area:

Cancer,MAPK pathway,MAPK/p38 pathway,MAPK/ERK pathway,Epigenetics,

Species Reactivity:

Human,Mouse,Rat,Other (Wide Range)

Host Species:

Rabbit

Isotype:

IgG

Form:

Liquid

Storage Buffer:

Buffer: PBS with 0.02% sodium azide, 50% glycerol, pH7.3.

Recommended Dilution:

WB 1:500 - 1:2000

IHC 1:50 - 1:200

IF 1:50 - 1:200

IP 1:50 - 1:200

ChIP 1:20 - 1:100

CHIPseq 1:20 - 1:100

Storage Instruction:

Store at -20°C. Avoid freeze / thaw cycles.

Alternative Names:

H3.4;H3/g;H3FT;H3t

SwissProt:

Q16695

Gene ID:

8290 (human);

Calculated Molecular Weight:

15kDa

Purification:

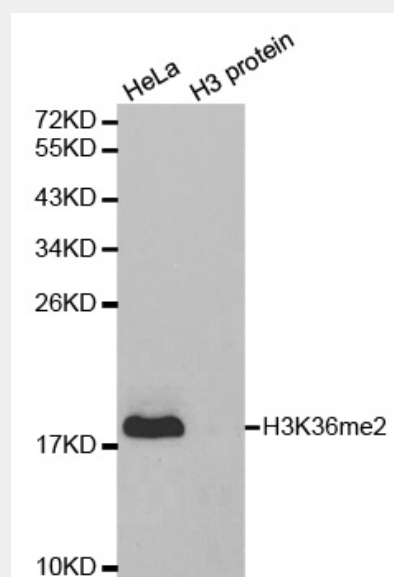
Affinity purification

Cellular Location:

Chromosome,Nucleus,

Product Description

Histones are basic nuclear proteins that are responsible for the nucleosome structure of the chromosomal fiber in eukaryotes. Nucleosomes consist of approximately 146 bp of DNA wrapped around a histone octamer composed of pairs of each of the four core histones (H2A, H2B, H3, and H4). The chromatin fiber is further compacted through the interaction of a linker histone, H1, with the DNA between the nucleosomes to form higher order chromatin structures. This gene is intronless and encodes a replication-dependent histone that is a member of the histone H3 family. Transcripts from this gene lack polyA tails; instead, they contain a palindromic termination element. This gene is located separately from the other H3 genes that are in the histone gene cluster on chromosome 6p22-p21.3.

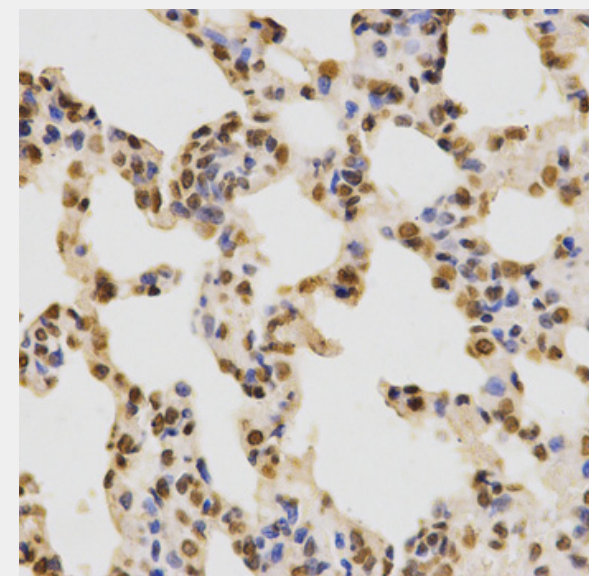


Western blot analysis of extracts of various cell lines, using DiMethyl-Histone H3-K36 antibody.

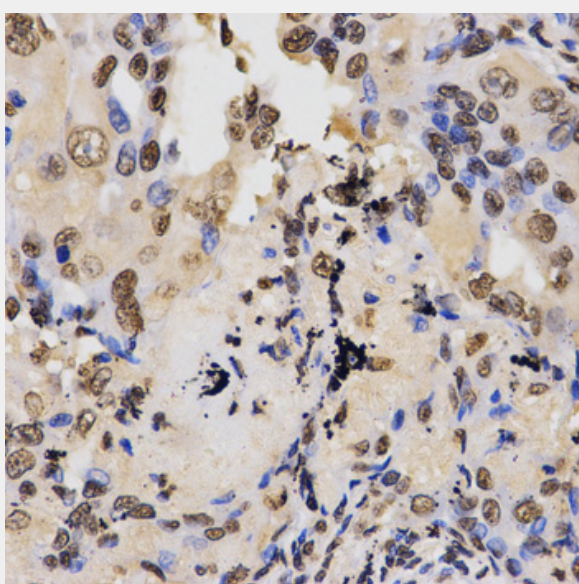
Secondary antibody: HRP Goat Anti-Rabbit IgG (H+L) at 1:10000 dilution.

Lysates/proteins: 25ug per lane.

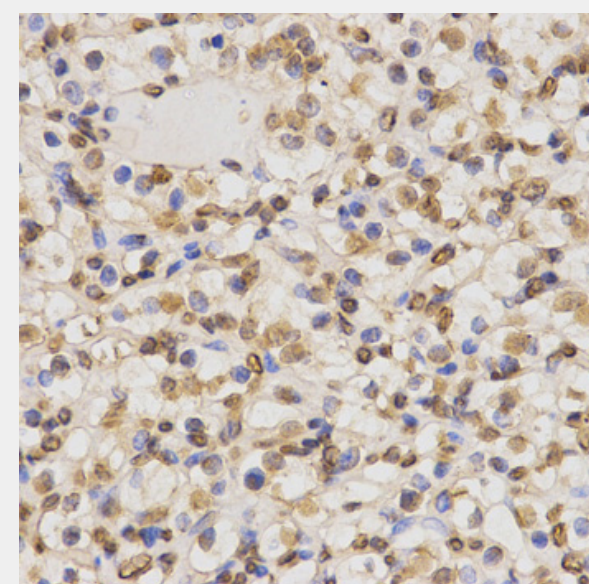
Blocking buffer: 3% nonfat dry milk in TBST.



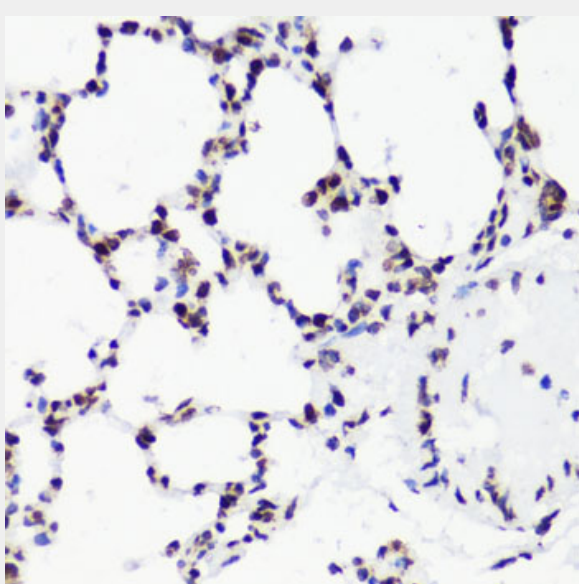
Immunohistochemistry of paraffin-embedded rat lung using DiMethyl-Histone H3-K36 antibody at dilution of 1:200 (40x lens).



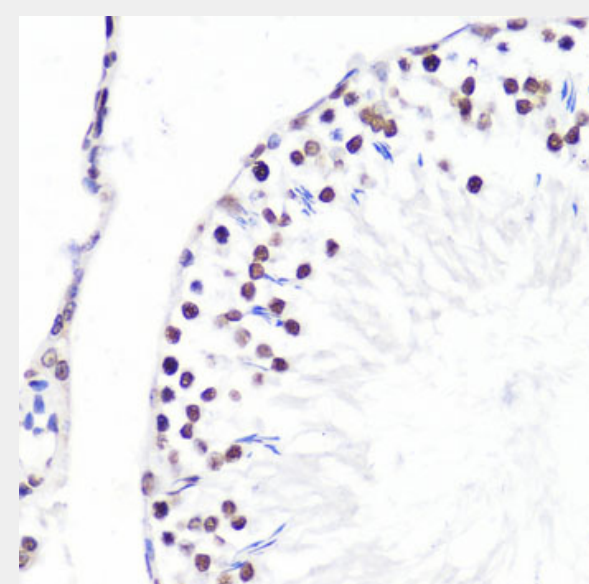
Immunohistochemistry of paraffin-embedded human lung cancer using DiMethyl-Histone H3-K36 antibody at dilution of 1:200 (40x lens).



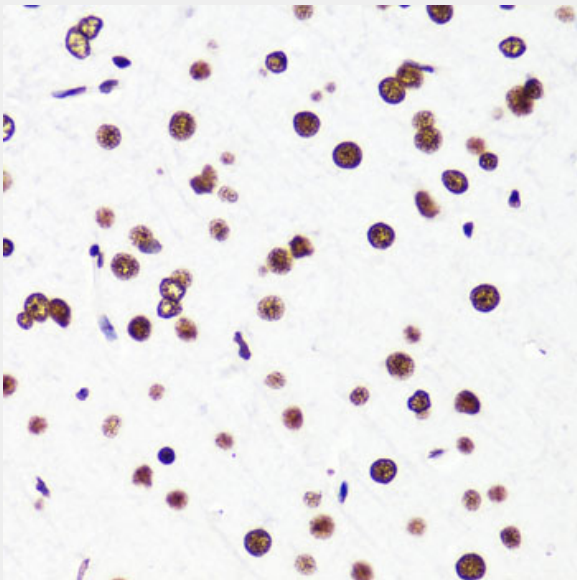
Immunohistochemistry of paraffin-embedded human kidney cancer using DiMethyl-Histone H3-K36 antibody at dilution of 1:200 (40x lens).



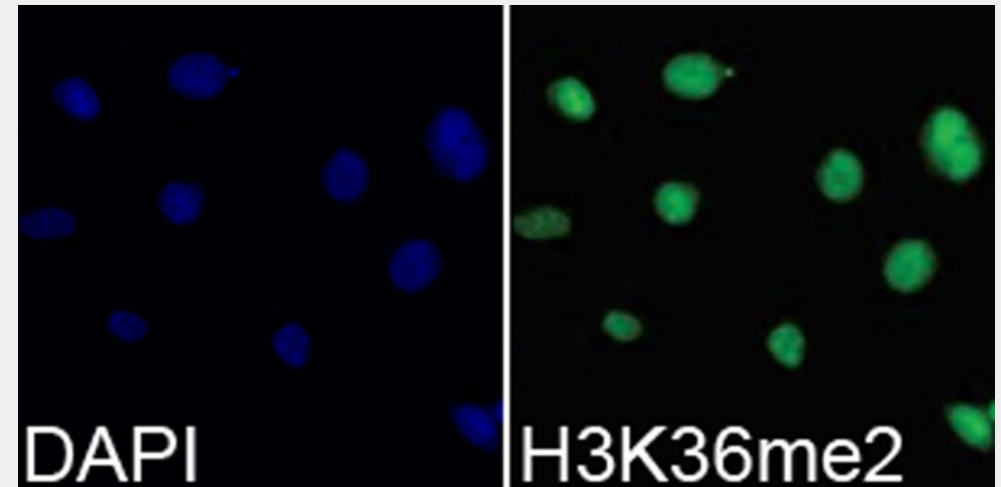
Immunohistochemistry of paraffin-embedded rat lung using H3K36me2 antibody at dilution of 1:100 (40x lens).



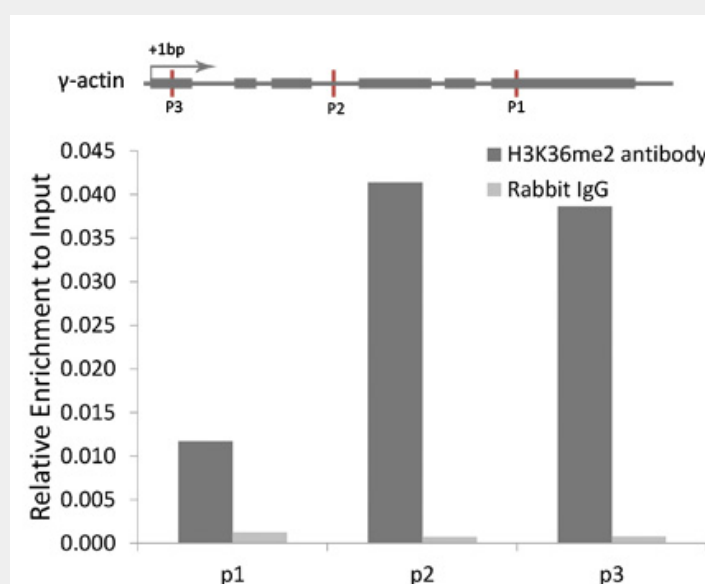
Immunohistochemistry of paraffin-embedded rat testis using H3K36me2 antibody at dilution of 1:100 (40x lens).



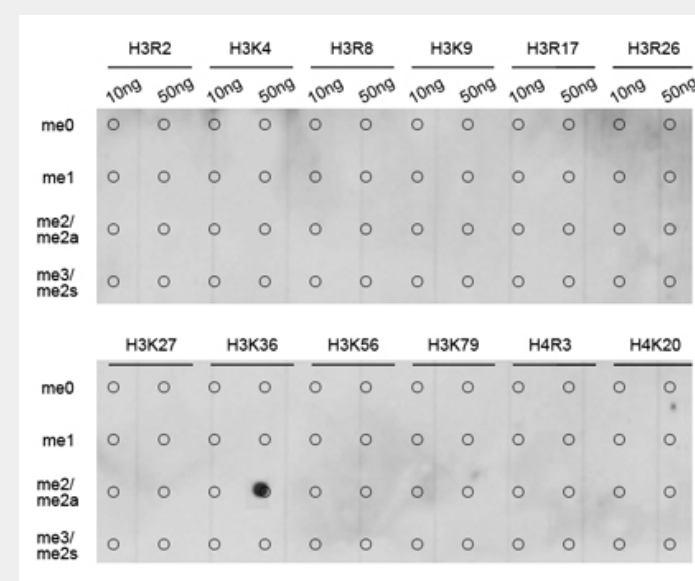
Immunohistochemistry of paraffin-embedded rat brain using H3K36me2 antibody at dilution of 1:100 (40x lens).



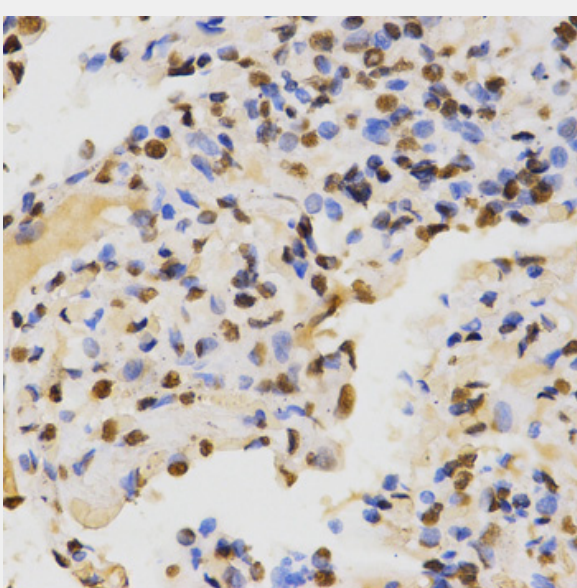
Immunofluorescence analysis of 293T cells using DiMethyl-Histone H3-K36 antibody.
Blue: DAPI for nuclear staining.



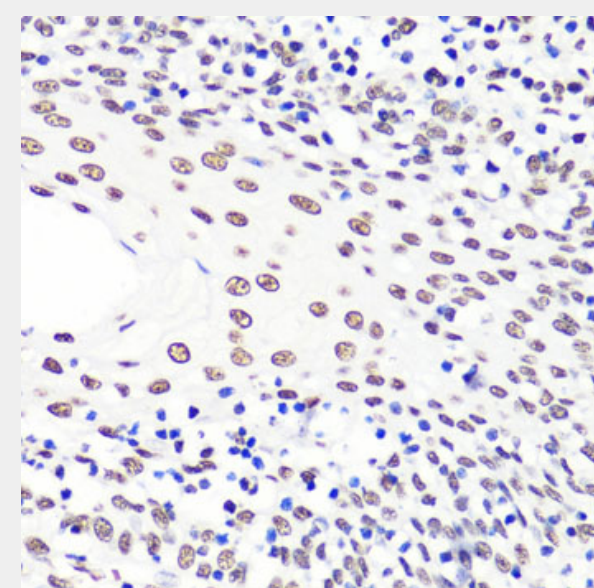
Chromatin immunoprecipitation analysis of γ -actin gene from 293 cell line, using DiMethyl-Histone H3-K36 antibody and rabbit IgG. P1, P2 and P3 were probes located on γ -actin gene as the schematic diagram illustrated. The amount of immunoprecipitated DNA was checked by quantitative PCR. Histogram was constructed by the ratios of the immunoprecipitated DNA to the input.



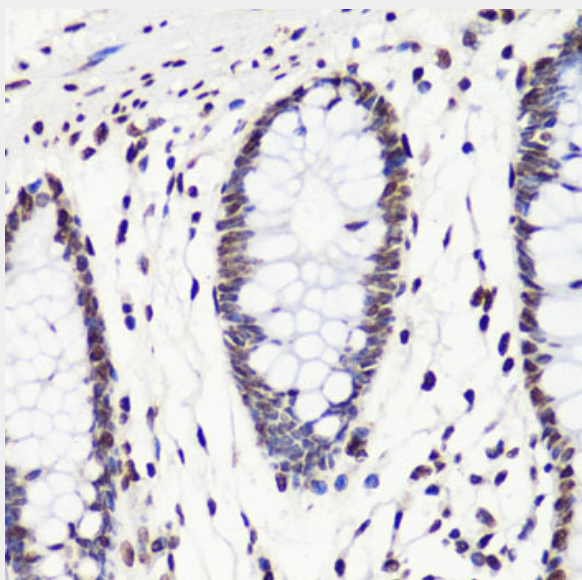
Dot-blot analysis of all sorts of methylation peptides using DiMethyl-Histone H3-K36 antibody.



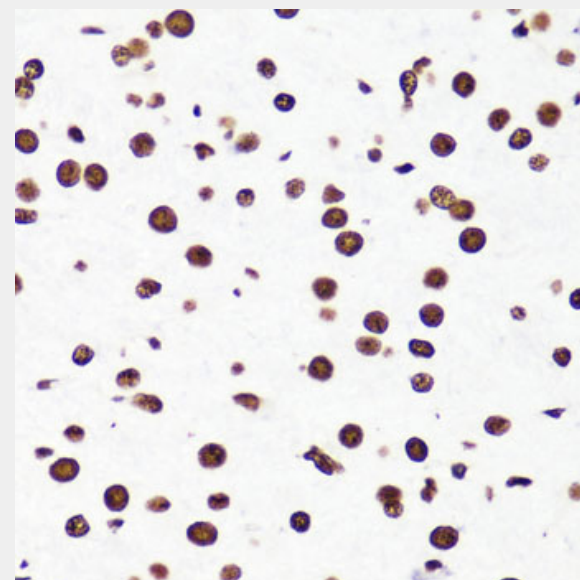
Immunohistochemistry of paraffin-embedded human lung using DiMethyl-Histone H3-K36 antibody at dilution of 1:200 (40x lens).



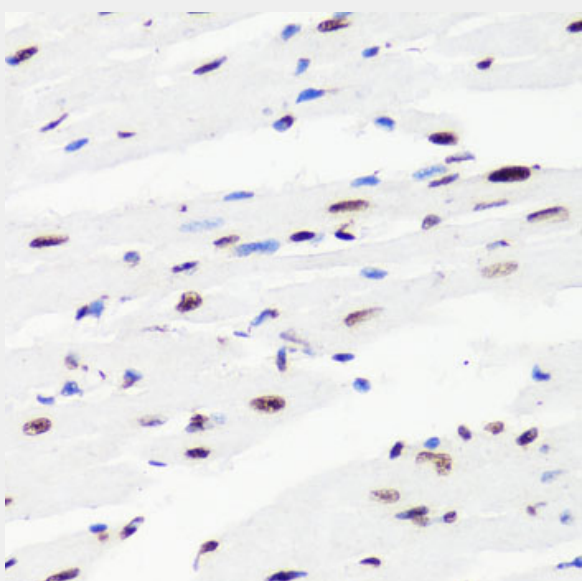
Immunohistochemistry of paraffin-embedded human tonsil using H3K36me2 antibody at dilution of 1:100 (40x lens).



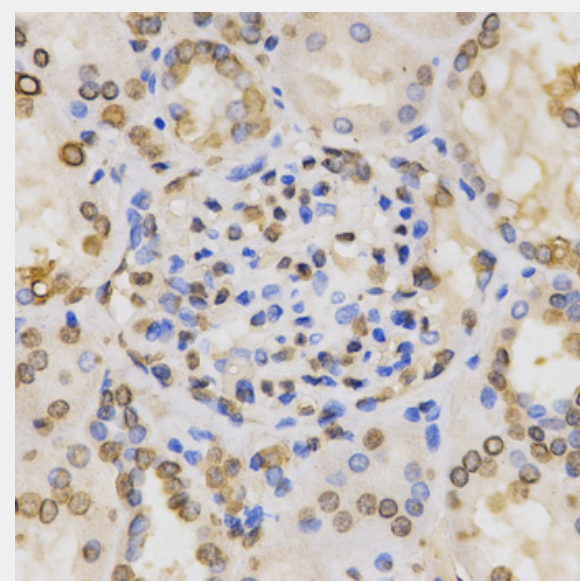
Immunohistochemistry of paraffin-embedded human colon using H3K36me2 antibody at dilution of 1:100 (40x lens).



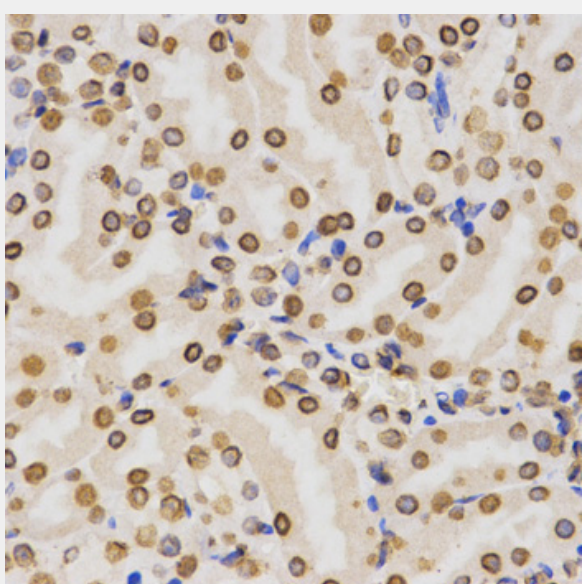
Immunohistochemistry of paraffin-embedded mouse brain using H3K36me2 antibody at dilution of 1:100 (40x lens).



Immunohistochemistry of paraffin-embedded mouse heart using H3K36me2 antibody at dilution of 1:100 (40x lens).



Immunohistochemistry of paraffin-embedded human kidney using DiMethyl-Histone H3-K36 antibody at dilution of 1:200 (40x lens).



Immunohistochemistry of paraffin-embedded mouse kidney using DiMethyl-Histone H3-K36 antibody at dilution of 1:200 (40x lens).

All products are for RESEARCH USE ONLY. Not for diagnostic & therapeutic purposes!