

HIST3H3 Polyclonal Antibody

Catalog No: tcba7445



Available Sizes

Size: 50ul

Size: 100ul

Size: 200ul



Specifications

Application:

WB,IHC,IP

Research Area:

Cancer,MAPK pathway,MAPK/p38 pathway,MAPK/ERK pathway,Epigenetics,

Species Reactivity:

Human,Mouse,Rat,Other (Wide Range)

Host Species:

Rabbit

Isotype:

IgG

Form:

Liquid

Storage Buffer:

Buffer: PBS with 0.02% sodium azide, 50% glycerol, pH7.3.

Recommended Dilution:

WB 1:500 - 1:2000

IHC 1:50 - 1:200

IP 1:20 - 1:50

Storage Instruction:

Store at -20°C. Avoid freeze / thaw cycles.

Alternative Names:

H3.4;H3/g;H3FT;H3t

SwissProt:

Q16695

Gene ID:

8290 (human);

Calculated Molecular Weight:

15kDa

Purification:

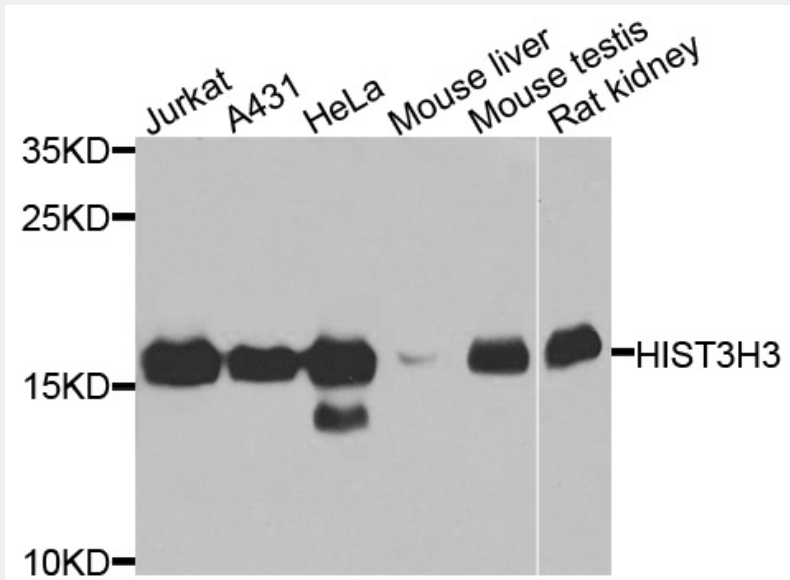
Affinity purification

Cellular Location:

Chromosome,Nucleus,

Product Description

Histones are basic nuclear proteins that are responsible for the nucleosome structure of the chromosomal fiber in eukaryotes. Nucleosomes consist of approximately 146 bp of DNA wrapped around a histone octamer composed of pairs of each of the four core histones (H2A, H2B, H3, and H4). The chromatin fiber is further compacted through the interaction of a linker histone, H1, with the DNA between the nucleosomes to form higher order chromatin structures. This gene is intronless and encodes a replication-dependent histone that is a member of the histone H3 family. Transcripts from this gene lack polyA tails; instead, they contain a palindromic termination element. This gene is located separately from the other H3 genes that are in the histone gene cluster on chromosome 6p22-p21.3.



Western blot analysis of extracts of various cell lines, using HIST3H3 antibody at 1:1000 dilution.

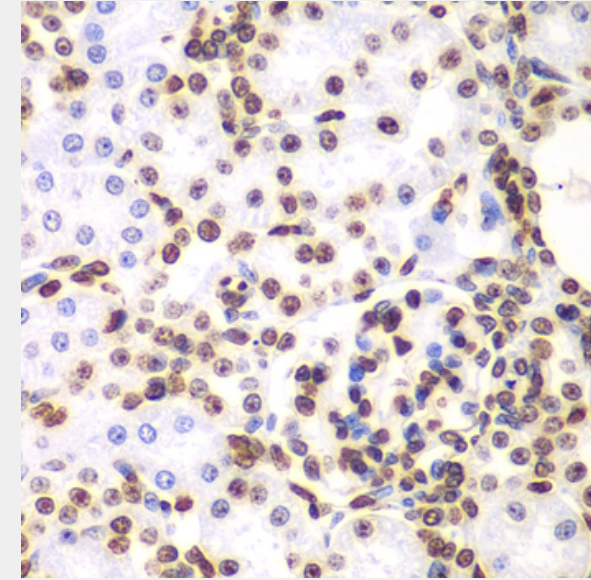
Secondary antibody: HRP Goat Anti-Rabbit IgG (H+L) at 1:10000 dilution.

Lysates/proteins: 25ug per lane.

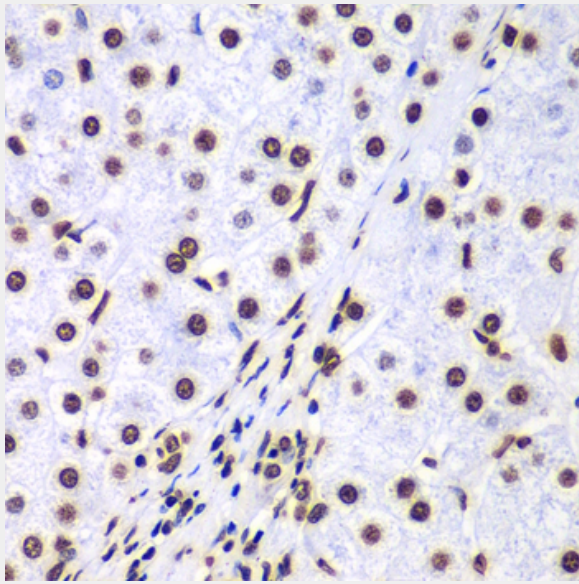
Blocking buffer: 3% nonfat dry milk in TBST.

Detection: ECL Basic Kit.

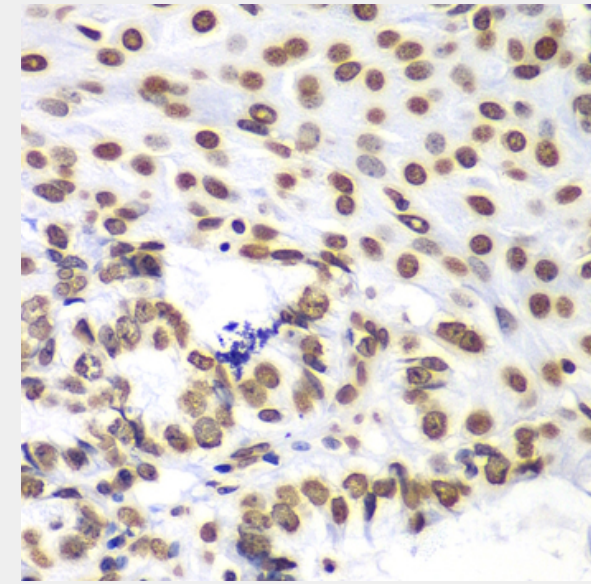
Exposure time: 10s.



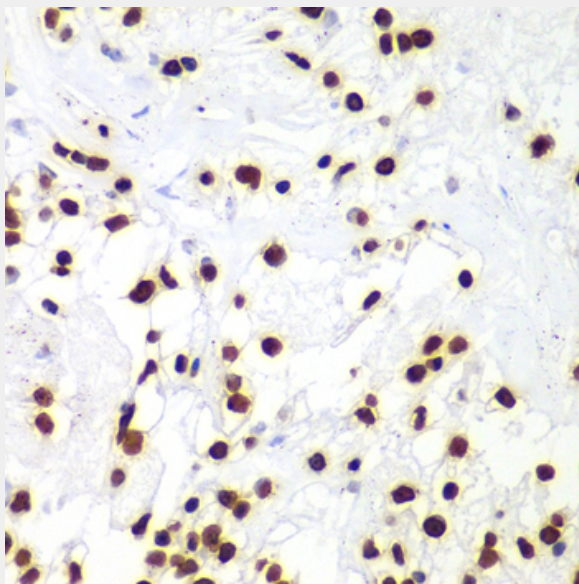
Immunohistochemistry of paraffin-embedded rat kidney using HIST3H3 antibody at dilution of 1:100 (40x lens).



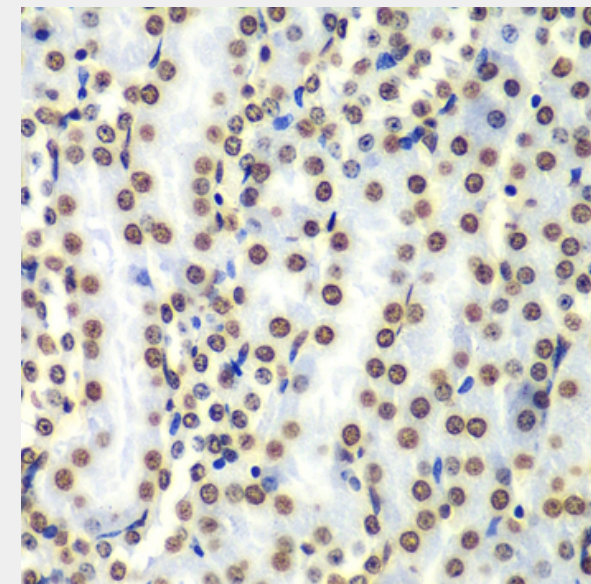
Immunohistochemistry of paraffin-embedded human liver cancer using HIST3H3 antibody at dilution of 1:100 (40x lens).



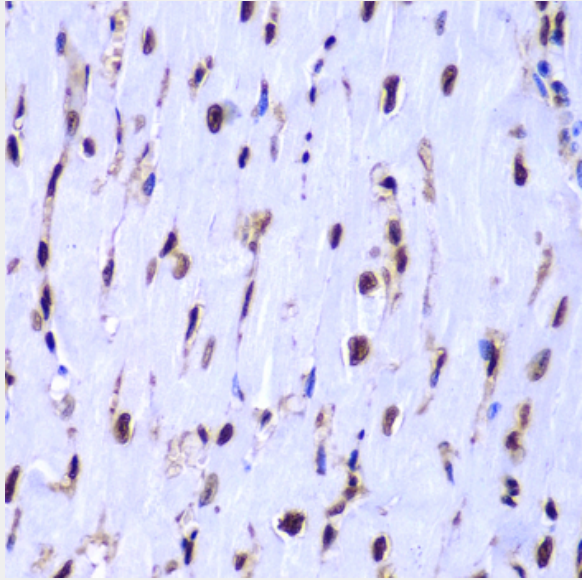
Immunohistochemistry of paraffin-embedded human oophoroma using HIST3H3 antibody at dilution of 1:100 (40x lens).



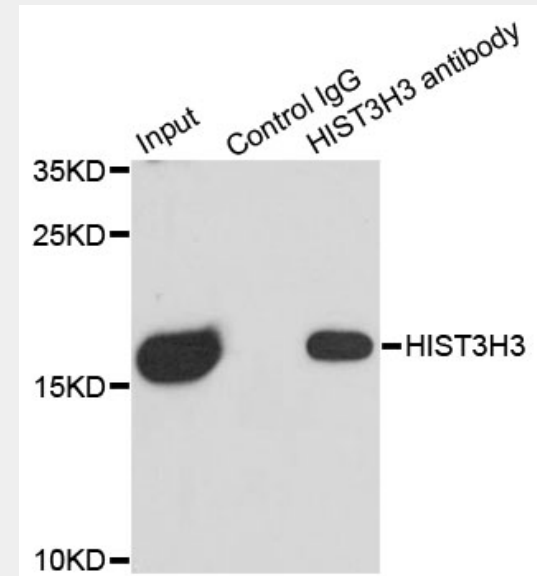
Immunohistochemistry of paraffin-embedded human kidney cancer using HIST3H3 antibody at dilution of 1:100 (40x lens).



Immunohistochemistry of paraffin-embedded mouse kidney using HIST3H3 antibody at dilution of 1:100 (40x lens).



Immunohistochemistry of paraffin-embedded mouse heart using HIST3H3 antibody at dilution of 1:100 (40x lens).



Immunoprecipitation analysis of 150ug extracts of MCF7 cells using 3ug HIST3H3 antibody. Western blot was performed from the immunoprecipitate using HIST3H3 antibody at a dilution of 1:500.

All products are for RESEARCH USE ONLY. Not for diagnostic & therapeutic purposes!