

# TOLLIP Polyclonal Antibody

Catalog No: tcba7350



## Available Sizes

---

**Size:** 50ul

---

**Size:** 100ul

---

**Size:** 200ul

---



## Specifications

---

**Application:**

WB,IHC,IF

---

**Research Area:**

Immunology,Innate Immunity,Toll-like Receptor pathway,

---

**Species Reactivity:**

Human,Mouse,Rat

---

**Host Species:**

Rabbit

---

**Isotype:**

IgG

---

**Form:**

Liquid

---

**Storage Buffer:**

Buffer: PBS with 0.02% sodium azide, 50% glycerol, pH7.3.

---

**Recommended Dilution:**

WB 1:500 - 1:2000

IHC 1:50 - 1:200

IF 1:50 - 1:200

---

**Storage Instruction:**

Store at -20°C. Avoid freeze / thaw cycles.

**Alternative Names:**

IL-1RAcPIP

**SwissProt:**

Q9H0E2

**Gene ID:**

54472 (human);

**Calculated Molecular Weight:**

22kDa/30kDa

**Purification:**

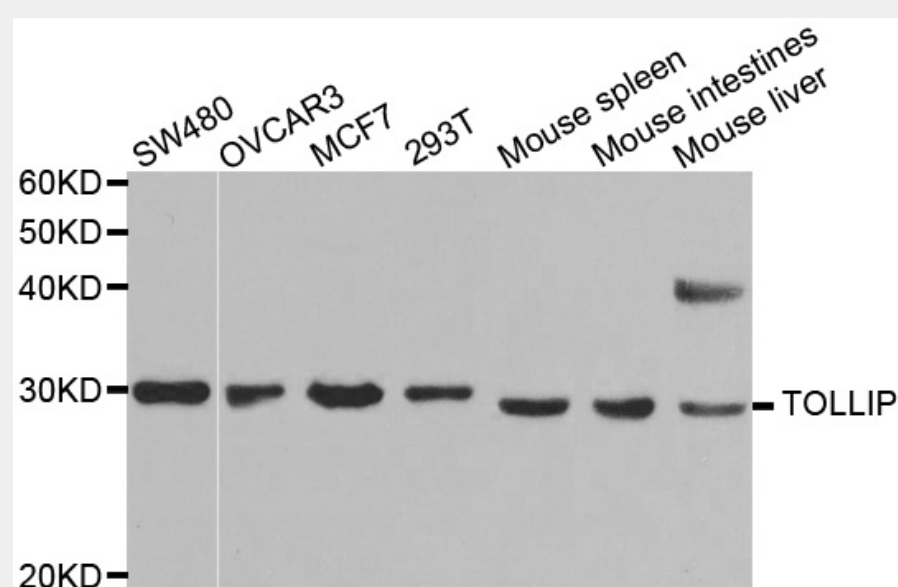
Affinity purification

**Cellular Location:**

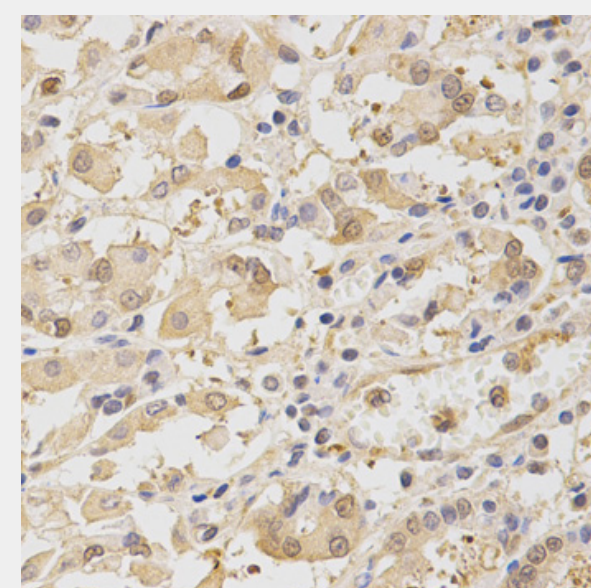
Cytoplasm,

**Product Description**

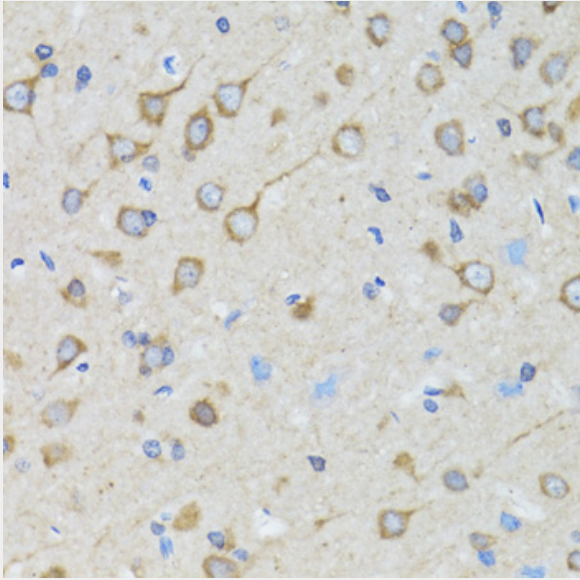
This gene encodes a ubiquitin-binding protein that interacts with several Toll-like receptor (TLR) signaling cascade components. The encoded protein regulates inflammatory signaling and is involved in interleukin-1 receptor trafficking and in the turnover of IL1R-associated kinase. Several transcript variants encoding different isoforms have been found for this gene.



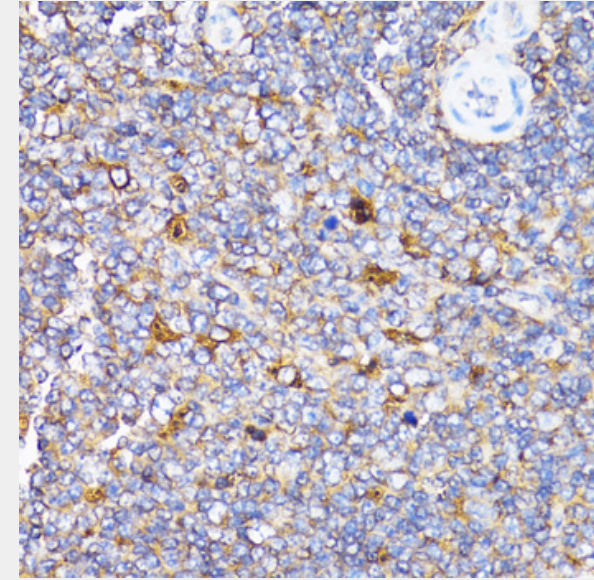
Western blot analysis of extracts of various cell lines, using TOLLIP antibody at 1:1000 dilution.  
Secondary antibody: HRP Goat Anti-Rabbit IgG (H+L) at 1:10000 dilution.  
Lysates/proteins: 25ug per lane.  
Blocking buffer: 3% nonfat dry milk in TBST.



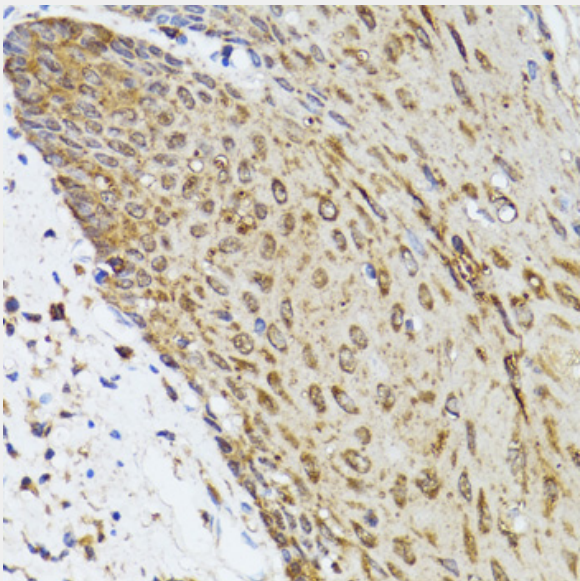
Immunohistochemistry of paraffin-embedded human stomach using TOLLIP antibody at dilution of 1:200 (40x lens).



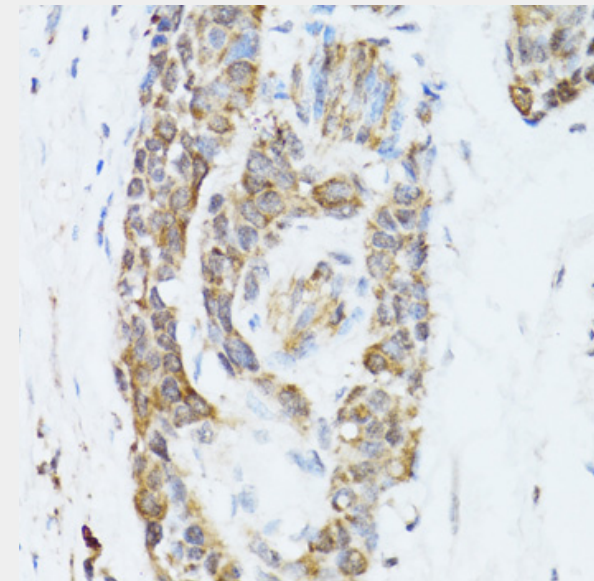
Immunohistochemistry of paraffin-embedded rat brain using TOLLIP antibody at dilution of 1:100 (40x lens).



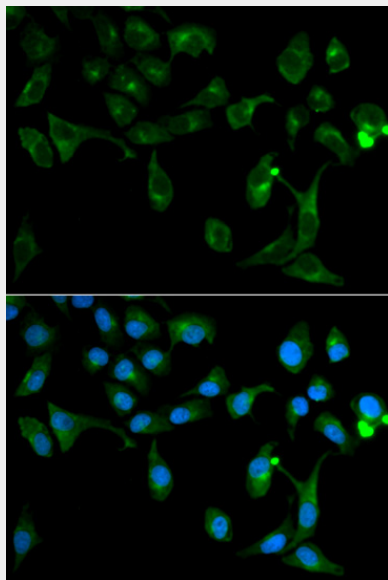
Immunohistochemistry of paraffin-embedded rat spleen using TOLLIP antibody at dilution of 1:100 (40x lens).



Immunohistochemistry of paraffin-embedded human esophagus using TOLLIP antibody at dilution of 1:100 (40x lens).



Immunohistochemistry of paraffin-embedded human esophageal cancer using TOLLIP antibody at dilution of 1:100 (40x lens).



Immunofluorescence analysis of U2OS cells using TOLLIP antibody. Blue: DAPI for nuclear staining.

All products are for RESEARCH USE ONLY. Not for diagnostic & therapeutic purposes!