

# Caspase-3 Rabbit Polyclonal antibody [KO Validated]

Catalog No: tcba7304

**KO** VALIDATED



## Available Sizes

Size: 50ul

Size: 100ul

Size: 200ul



## Specifications

### Application:

WB,IHC,IF

### Research Area:

Cancer,Apoptosis,Neuroscience,Cell Biology,Metabolism,Neurodegeneration,

### Species Reactivity:

Human,Mouse,Rat

### Host Species:

Rabbit

### Isotype:

IgG

### Form:

Liquid

### Storage Buffer:

Buffer: PBS with 0.02% sodium azide, 50% glycerol, pH7.3.

### Recommended Dilution:

WB 1:500 - 1:2000

IHC 1:50 - 1:200

IF 1:50 - 1:200

**Storage Instruction:**

Store at -20°C. Avoid freeze / thaw cycles.

---

**Alternative Names:**

CPP32; CPP32B; SCA-1; Active Caspase 3; CASP3; active Caspase-3; Caspase 3; Caspase-3 p12; caspase-3

---

**SwissProt:**

P42574

---

**Gene ID:**

836 (human);

---

**Calculated Molecular Weight:**

31kDa

---

**Observed Molecular Weight:**

17kDa, 35kDa

---

**Purification:**

Affinity purification

---

**Positive Control:**

Jurkat

---

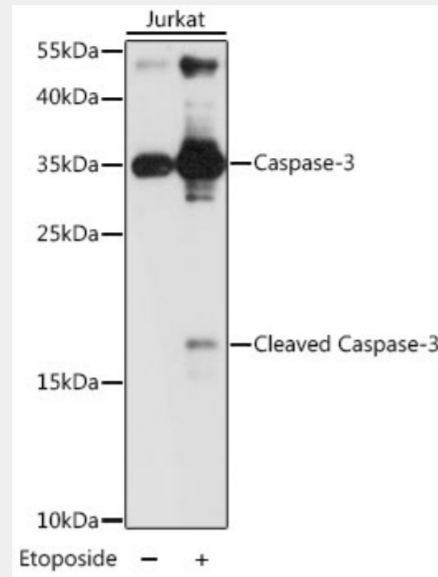
**Cellular Location:**

Cytoplasm,

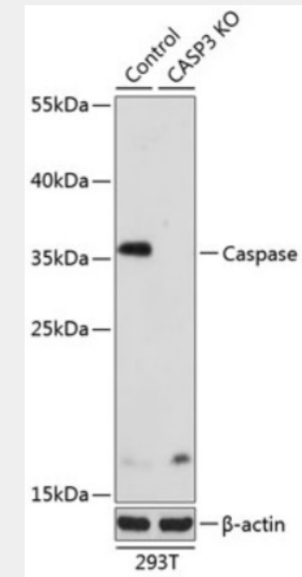
---

**Product Description**

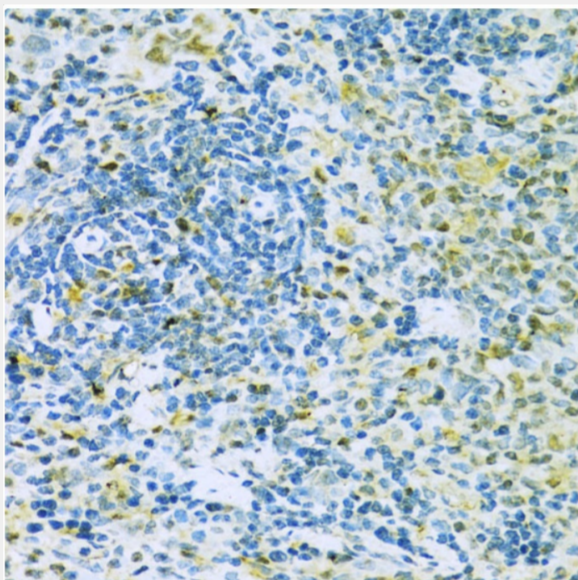
This gene encodes a protein which is a member of the cysteine-aspartic acid protease (caspase) family. Sequential activation of caspases plays a central role in the execution-phase of cell apoptosis. Caspases exist as inactive proenzymes which undergo proteolytic processing at conserved aspartic residues to produce two subunits, large and small, that dimerize to form the active enzyme. This protein cleaves and activates caspases 6, 7 and 9, and the protein itself is processed by caspases 8, 9 and 10. It is the predominant caspase involved in the cleavage of amyloid-beta 4A precursor protein, which is associated with neuronal death in Alzheimer's disease. Alternative splicing of this gene results in two transcript variants that encode the same protein.



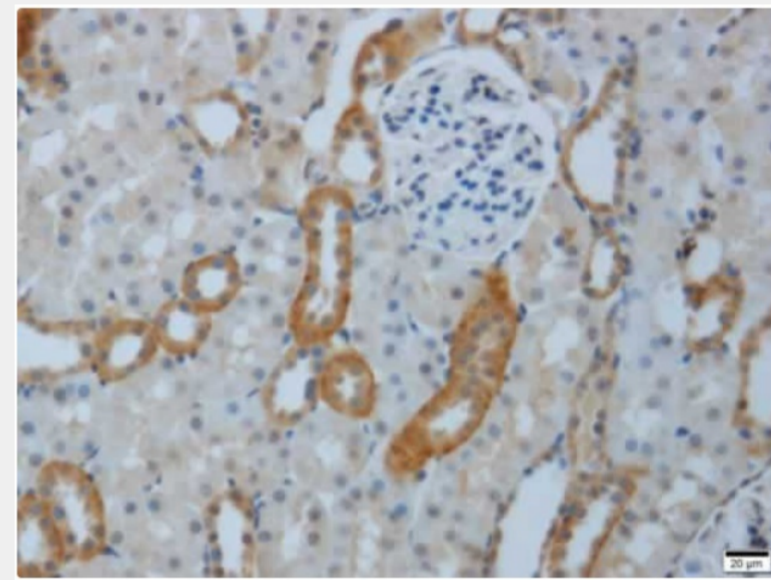
Western blot analysis of extracts of Jurkat cells, using CASP3 antibody at 1:1000 dilution. Jurkat cells treated by Etoposide 25uM etoposide for 5 hours. Secondary antibody: HRP Goat Anti-Rabbit IgG (H+L) at 1:10000 dilution. Lysates/proteins: 25ug per lane. Blocking buffer: 3% nonfat dry milk in TBST. Detection: ECL Basic Kit. Exposure time: 3s.



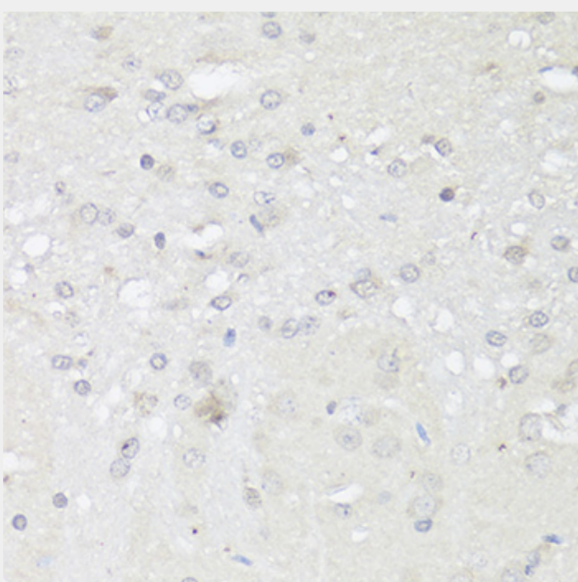
Western blot analysis of extracts from normal (control) and Caspase-3 knockout (KO) 293T cells, using Caspase-3 antibody (A2156) at 1:1000 dilution. Secondary antibody: HRP Goat Anti-Rabbit IgG (H+L) at 1:10000 dilution. Lysates/proteins: 25ug per lane. Blocking buffer: 3% nonfat dry milk in TBST. Detection: ECL Basic Kit. Exposure time: 3min.



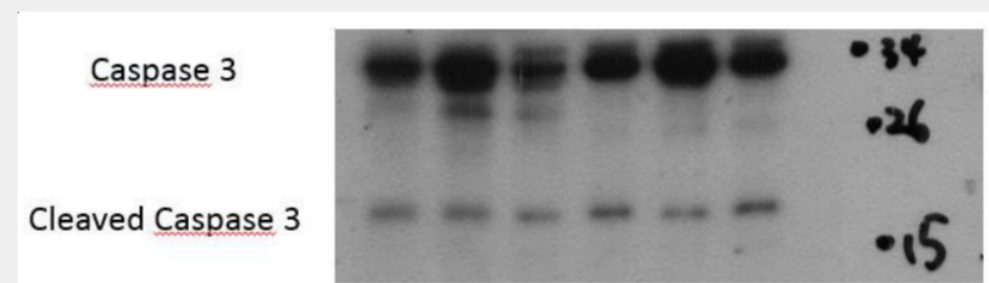
Immunohistochemistry of paraffin-embedded rat spleen using Caspase-3 antibody at dilution of 1:100 (40x lens).



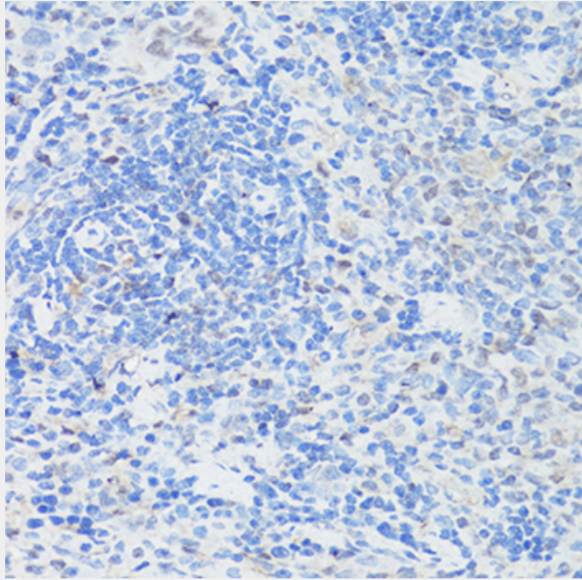
Customer Review



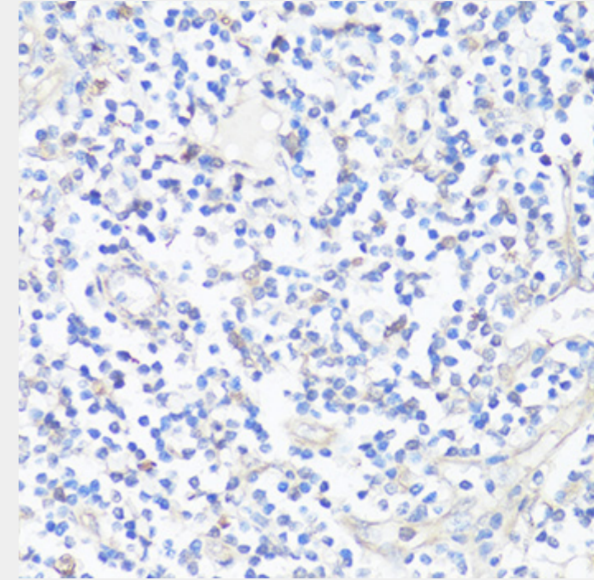
Immunohistochemistry of paraffin-embedded rat brain using CASP3 antibody at dilution of 1:100 (40x lens).



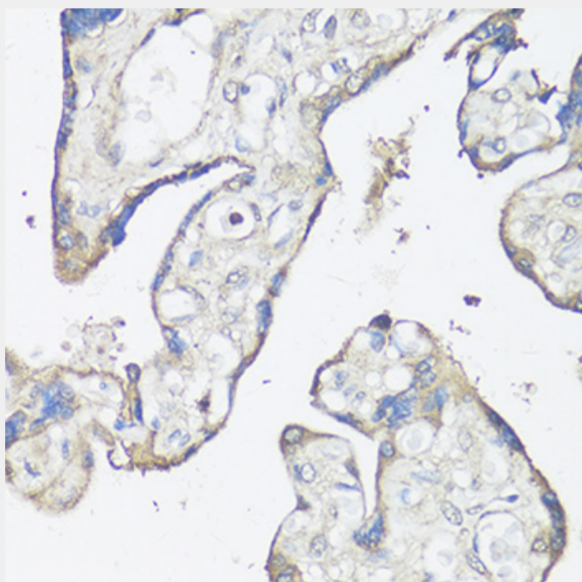
Customer Review



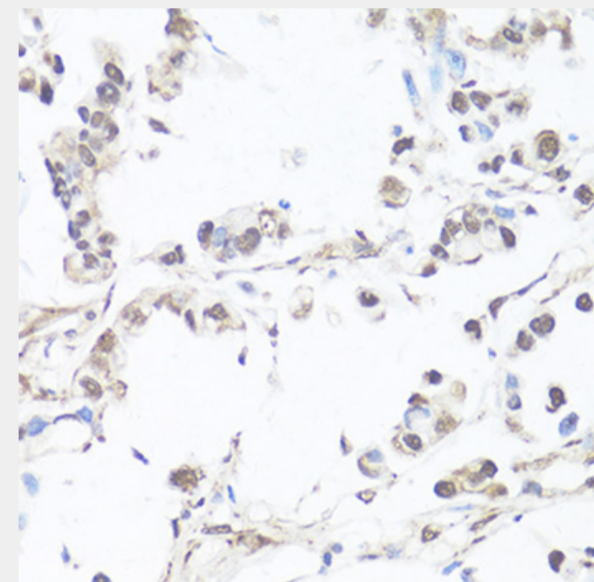
Immunohistochemistry of paraffin-embedded rat spleen using CASP3 antibody at dilution of 1:100 (40x lens).



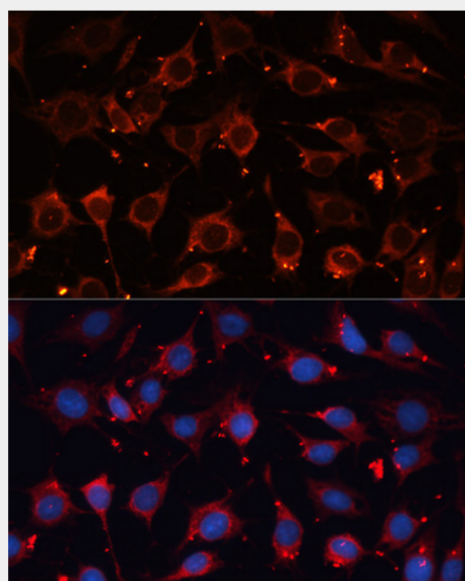
Immunohistochemistry of paraffin-embedded human tonsil using CASP3 antibody at dilution of 1:100 (40x lens).



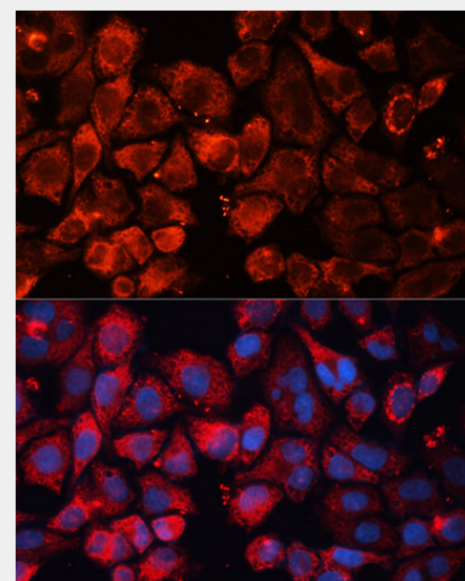
Immunohistochemistry of paraffin-embedded human placenta using CASP3 antibody at dilution of 1:100 (40x lens).



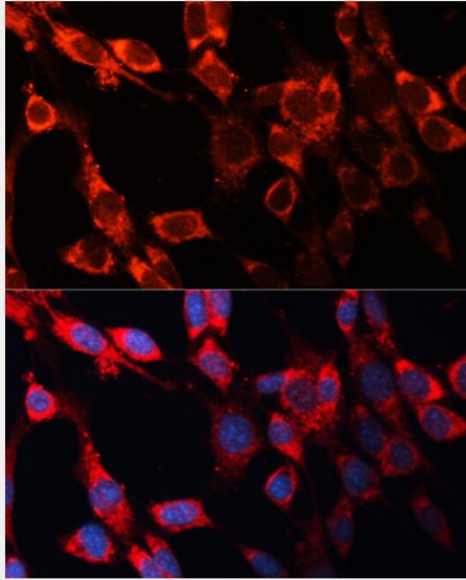
Immunohistochemistry of paraffin-embedded human gastric cancer using CASP3 antibody at dilution of 1:100 (40x lens).



Immunofluorescence analysis of C6 cells using CASP3 antibody at dilution of 1:100. Blue: DAPI for nuclear staining.



Immunofluorescence analysis of HeLa cells using CASP3 antibody at dilution of 1:100. Blue: DAPI for nuclear staining.



Immunofluorescence analysis of NIH/3T3 cells using CASP3 antibody at dilution of 1:100. Blue: DAPI for nuclear staining.

All products are for RESEARCH USE ONLY. Not for diagnostic & therapeutic purposes!