

SUMO1 Polyclonal Antibody

Catalog No: tcba7278



Available Sizes

Size: 50ul

Size: 100ul

Size: 200ul



Specifications

Application:

WB,IHC,IF

Research Area:

Cancer,Autophagy pathway,Cardiovascular,Cell Biology,Metabolism,NF-κB pathway,RNA Binding Protein(RBP),

Species Reactivity:

Human,Mouse,Rat

Host Species:

Rabbit

Isotype:

IgG

Form:

Liquid

Storage Buffer:

Buffer: PBS with 0.02% sodium azide, 50% glycerol, pH7.3.

Recommended Dilution:

WB 1:500 - 1:2000

IHC 1:50 - 1:100

IF 1:50 - 1:200

Storage Instruction:

Store at -20°C. Avoid freeze / thaw cycles.

Alternative Names:

DAP1;GMP1;OFC10;PIC1;SEN2;SMT3;SMT3C;SMT3H3;UBL1

SwissProt:

P63165

Gene ID:

7341 (human);

Calculated Molecular Weight:

8kDa/11kDa

Purification:

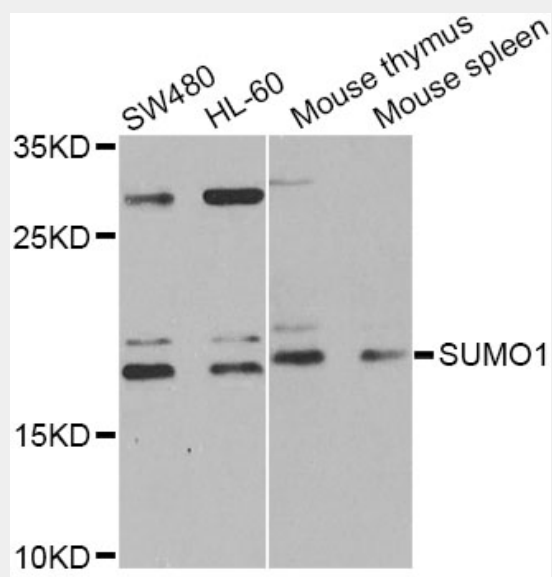
Affinity purification

Cellular Location:

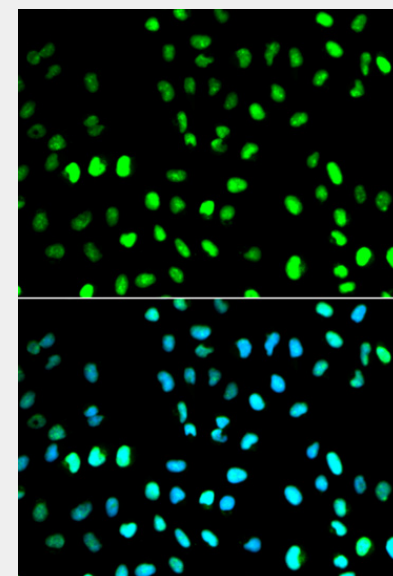
Cell membrane,Cytoplasm,Nucleus,Nucleus membrane,Nucleus speckle,PML body,

Product Description

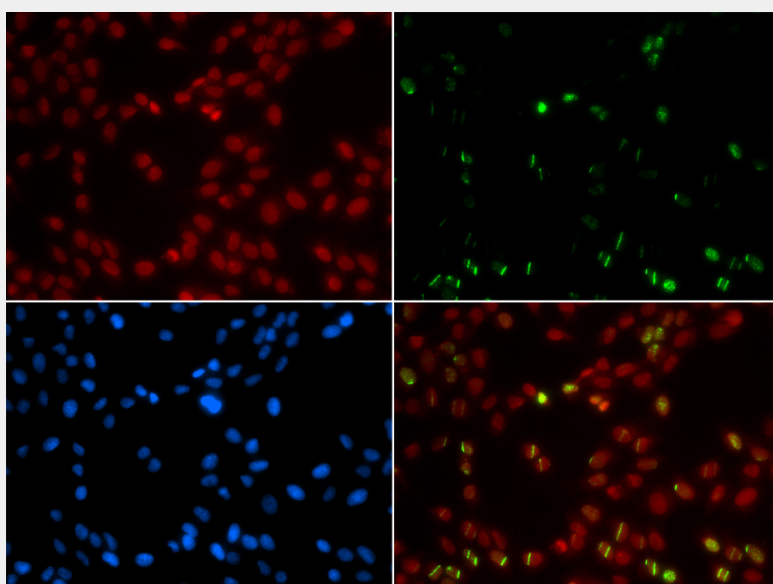
This gene encodes a protein that is a member of the SUMO (small ubiquitin-like modifier) protein family. It functions in a manner similar to ubiquitin in that it is bound to target proteins as part of a post-translational modification system. However, unlike ubiquitin which targets proteins for degradation, this protein is involved in a variety of cellular processes, such as nuclear transport, transcriptional regulation, apoptosis, and protein stability. It is not active until the last four amino acids of the carboxy-terminus have been cleaved off. Several pseudogenes have been reported for this gene. Alternate transcriptional splice variants encoding different isoforms have been characterized.



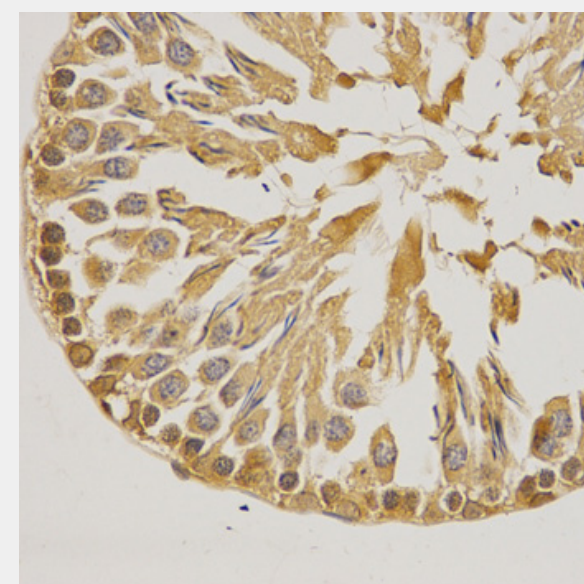
Western blot analysis of extracts of various cell lines, using SUMO1 Antibody at 1:1000 dilution.
Secondary antibody: HRP Goat Anti-Rabbit IgG (H+L) at 1:10000 dilution.
Lysates/proteins: 25ug per lane.
Blocking buffer: 3% nonfat dry milk in TBST.
Detection: ECL Basic Kit.
Exposure time: 90s.



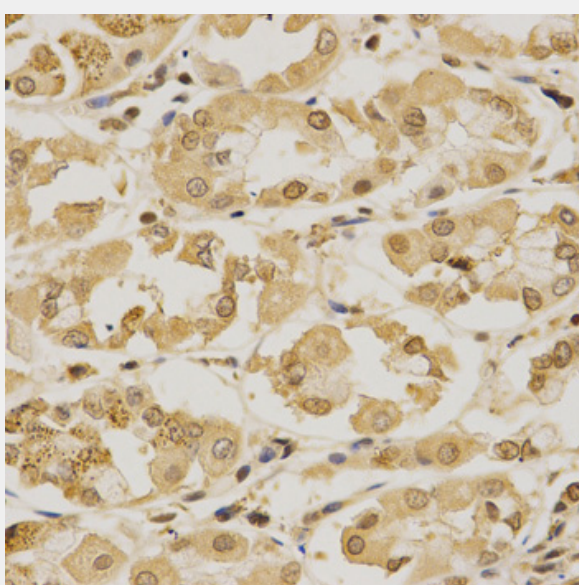
Immunofluorescence analysis of MCF-7 cells using SUMO1 antibody. Blue: DAPI for nuclear staining.



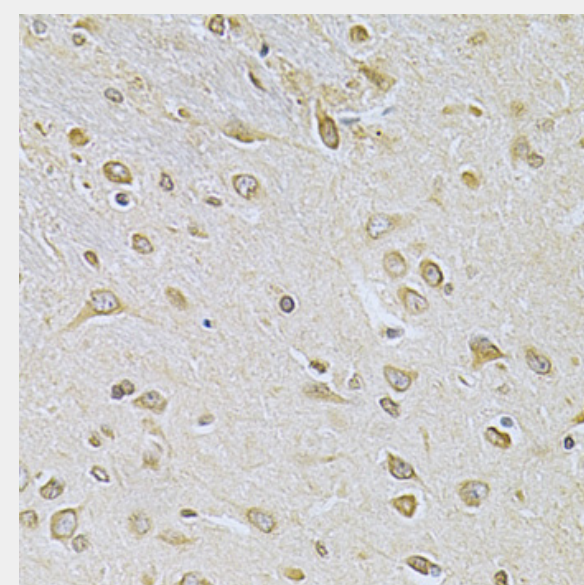
Immunofluorescence analysis of GFP-RNF168 transgenic U2OS cells using SUMO1 antibody. Green: GFP-RNF168 fusion protein expression for DNA damage marker. Blue: DAPI for nuclear staining. RNF168(GFP) can be used to mark cells damaged by UV-A laser for they always gather around DNA damage region.



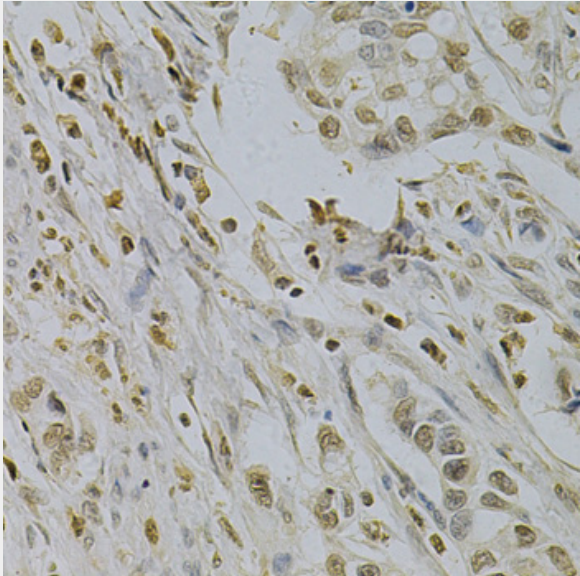
Immunohistochemistry of paraffin-embedded rat testis using SUMO1 Antibody at dilution of 1:200 (40x lens).



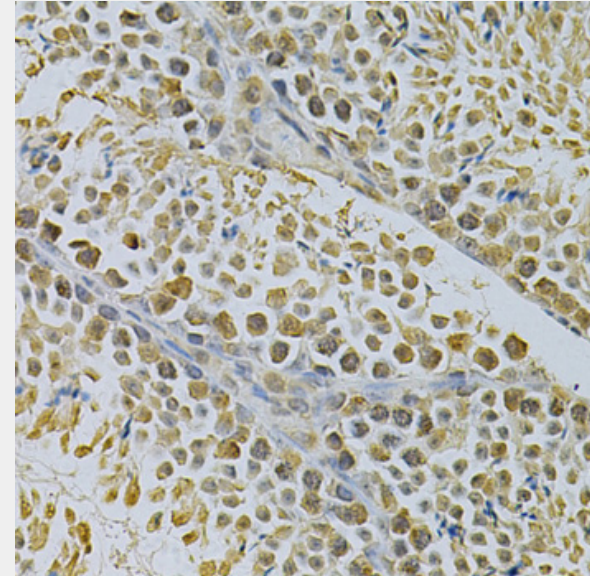
Immunohistochemistry of paraffin-embedded human stomach using SUMO1 Antibody at dilution of 1:200 (40x lens).



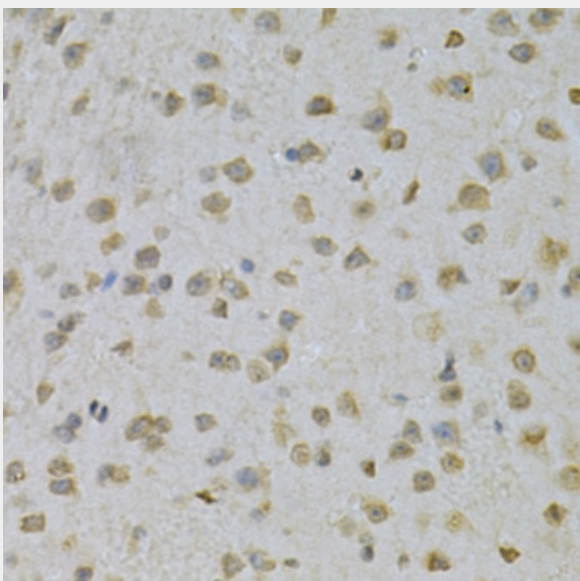
Immunohistochemistry of paraffin-embedded rat brain using SUMO1 Antibody at dilution of 1:200 (40x lens).



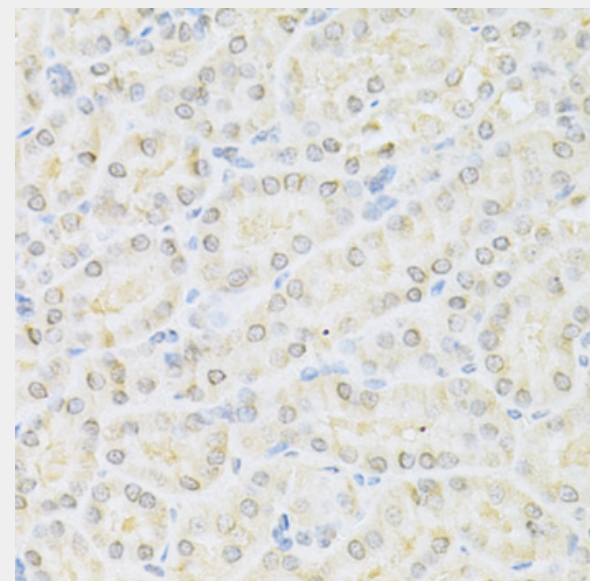
Immunohistochemistry of paraffin-embedded human gastric cancer using SUMO1 Antibody at dilution of 1:200 (40x lens).



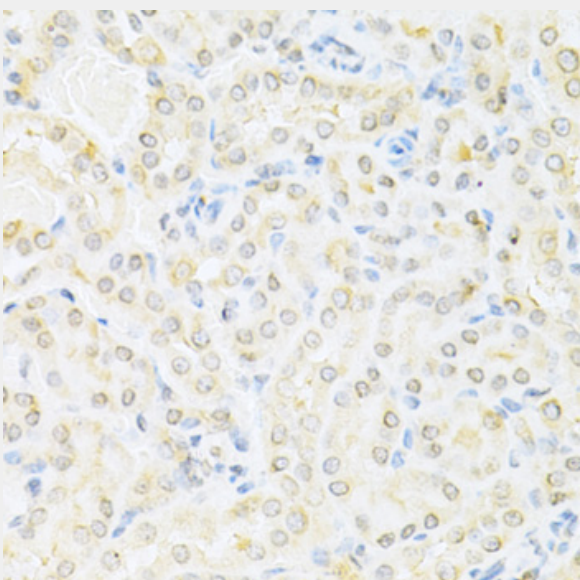
Immunohistochemistry of paraffin-embedded mouse testis using SUMO1 Antibody at dilution of 1:200 (40x lens).



Immunohistochemistry of paraffin-embedded mouse brain using SUMO1 Antibody at dilution of 1:200 (40x lens).



Immunohistochemistry of paraffin-embedded mouse kidney using SUMO1 Antibody at dilution of 1:200 (40x lens).



Immunohistochemistry of paraffin-embedded mouse kidney using SUMO1 Antibody at dilution of 1:200 (40x lens).

All products are for RESEARCH USE ONLY. Not for diagnostic & therapeutic purposes!