

STK11 Polyclonal Antibody

Catalog No: tcba7270



Available Sizes

Size: 50ul

Size: 100ul

Size: 200ul



Specifications

Application:

WB,IHC,IF

Research Area:

Cancer,Cell cycle,Apoptosis,Autophagy pathway,p53 pathway,mTOR pathway,Cell Biology,Metabolism,

Species Reactivity:

Human,Mouse,Rat

Host Species:

Rabbit

Isotype:

IgG

Form:

Liquid

Storage Buffer:

Buffer: PBS with 0.02% sodium azide, 50% glycerol, pH7.3.

Recommended Dilution:

WB 1:500 - 1:2000

IHC 1:50 - 1:200

IF 1:50 - 1:200

Storage Instruction:

Store at -20°C. Avoid freeze / thaw cycles.

Alternative Names:

hLKB1;LKB1;PJS

SwissProt:

Q15831

Gene ID:

6794 (human);

Calculated Molecular Weight:

45kDa/48kDa

Purification:

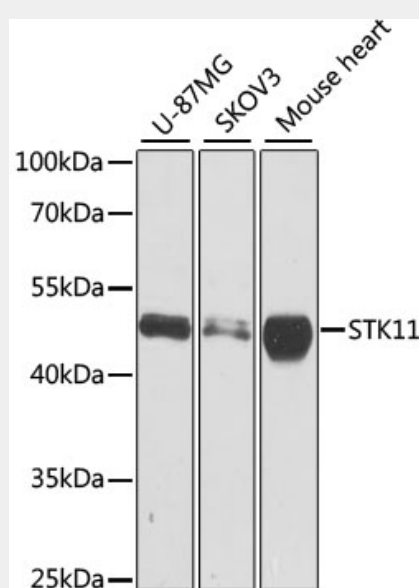
Affinity purification

Cellular Location:

Cytoplasm,Membrane,Mitochondrion,Nucleus,

Product Description

This gene, which encodes a member of the serine/threonine kinase family, regulates cell polarity and functions as a tumor suppressor. Mutations in this gene have been associated with Peutz-Jeghers syndrome, an autosomal dominant disorder characterized by the growth of polyps in the gastrointestinal tract, pigmented macules on the skin and mouth, and other neoplasms. Alternate transcriptional splice variants of this gene have been observed but have not been thoroughly characterized.



Western blot analysis of extracts of various cell lines, using STK11 antibody at 1:1000 dilution.

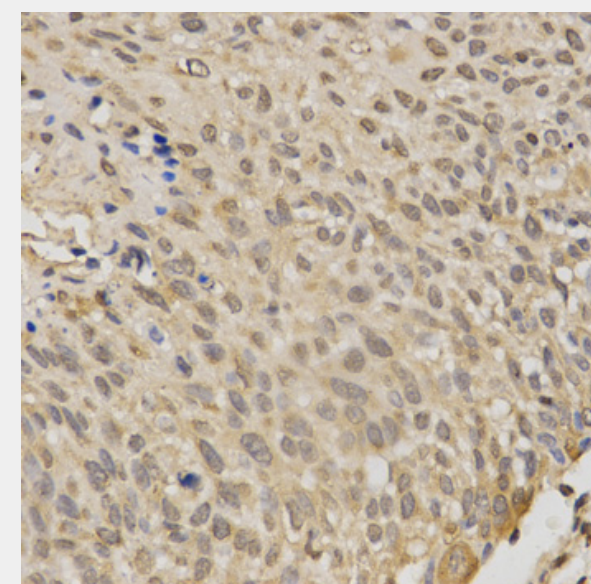
Secondary antibody: HRP Goat Anti-Rabbit IgG (H+L) at 1:10000 dilution.

Lysates/proteins: 25ug per lane.

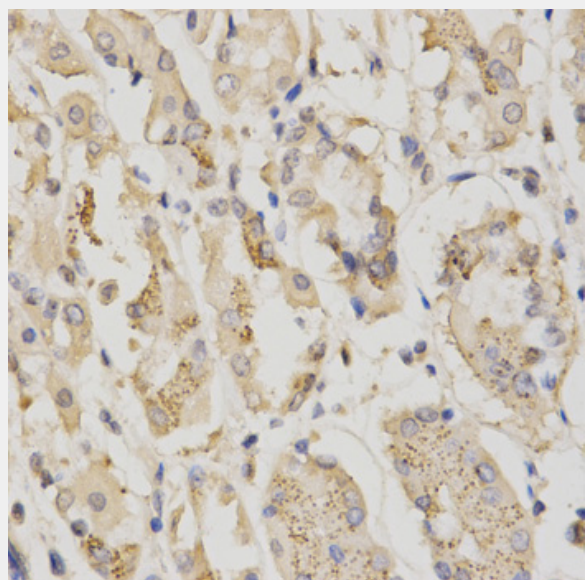
Blocking buffer: 3% nonfat dry milk in TBST.

Detection: ECL Basic Kit.

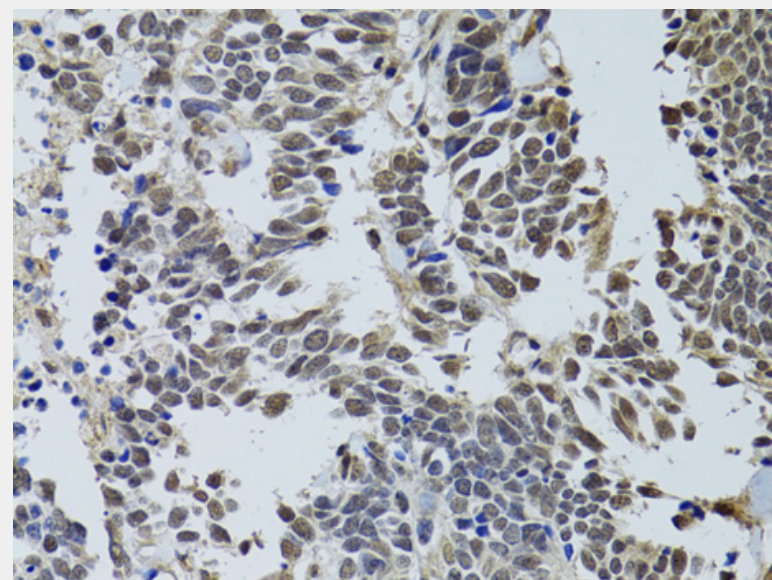
Exposure time: 10s.



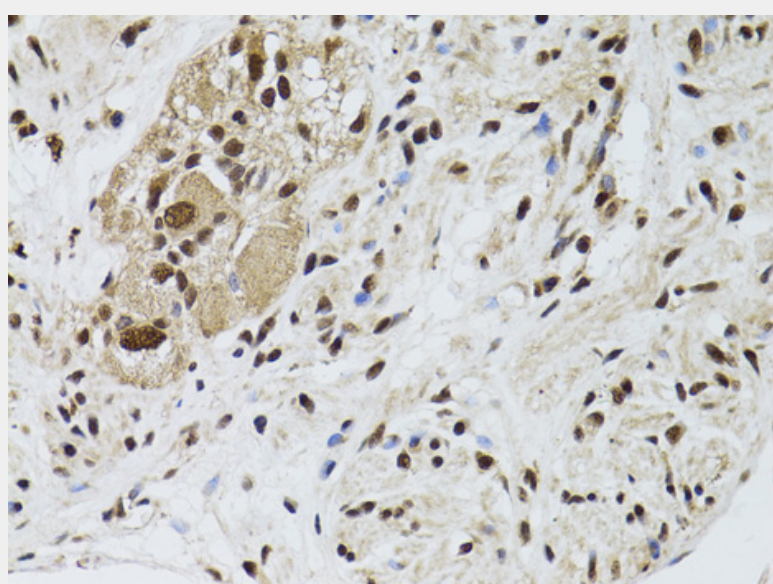
Immunohistochemistry of paraffin-embedded human esophageal cancer using STK11 antibody at dilution of 1:200 (40x lens).



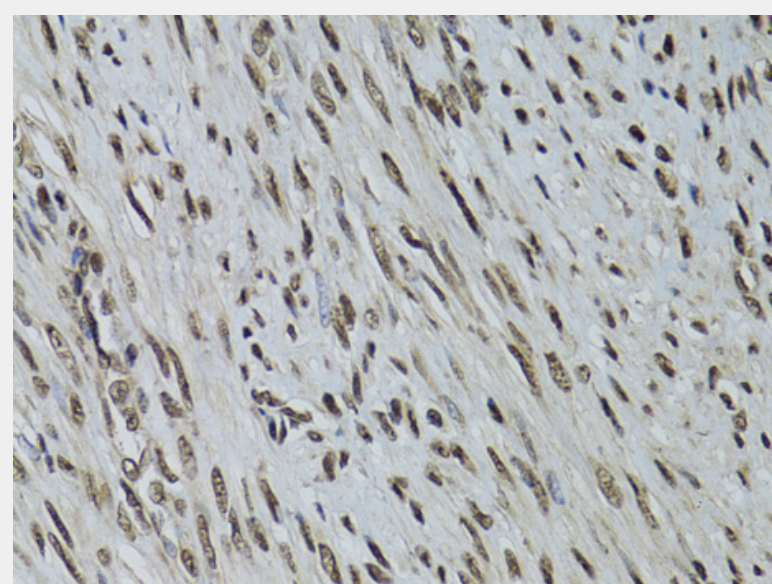
Immunohistochemistry of paraffin-embedded human stomach using STK11 antibody at dilution of 1:200 (40x lens).



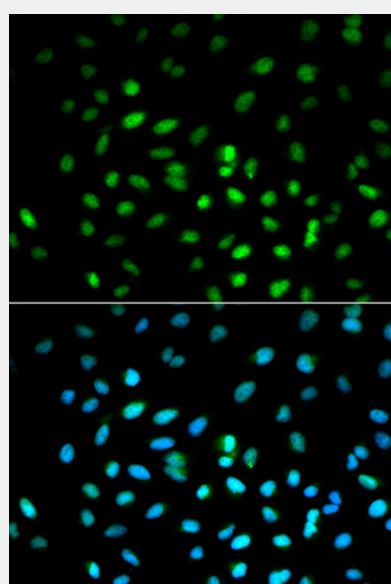
Immunohistochemistry of paraffin-embedded human lung cancer using STK11 antibody at dilution of 1:100 (40x lens).



Immunohistochemistry of paraffin-embedded human colon carcinoma using STK11 antibody at dilution of 1:100 (40x lens).



Immunohistochemistry of paraffin-embedded human uterine cancer using STK11 antibody at dilution of 1:100 (40x lens).



Immunofluorescence analysis of MCF-7 cells using STK11 antibody. Blue: DAPI for nuclear staining.

All products are for RESEARCH USE ONLY. Not for diagnostic & therapeutic purposes!