

# PPP4C Polyclonal Antibody

Catalog No: tcba7257



## Available Sizes

**Size:** 50ul

**Size:** 100ul

**Size:** 200ul



## Specifications

**Application:**

WB,IHC,IF,IP

**Research Area:**

Cancer,DNA Damage/Repair,Epigenetics,

**Species Reactivity:**

Human,Mouse,Rat

**Host Species:**

Rabbit

**Isotype:**

IgG

**Form:**

Liquid

**Storage Buffer:**

Buffer: PBS with 0.02% sodium azide, 50% glycerol, pH7.3.

**Recommended Dilution:**

WB 1:500 - 1:2000

IHC 1:50 - 1:200

IF 1:50 - 1:100

IP 1:50 - 1:200

**Storage Instruction:**

Store at -20°C. Avoid freeze / thaw cycles.

**Alternative Names:**

PP-X;PP4;PP4C;PPH3;PPP4;PPX

**SwissProt:**

P60510

**Gene ID:**

5531 (human);

**Calculated Molecular Weight:**

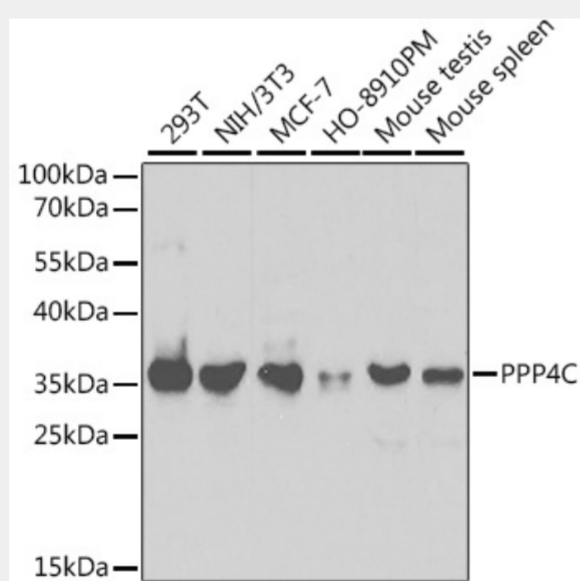
35kDa

**Purification:**

Affinity purification

**Cellular Location:**

Cytoplasm,Nucleus,centrosome,cytoskeleton,microtubule organizing center,

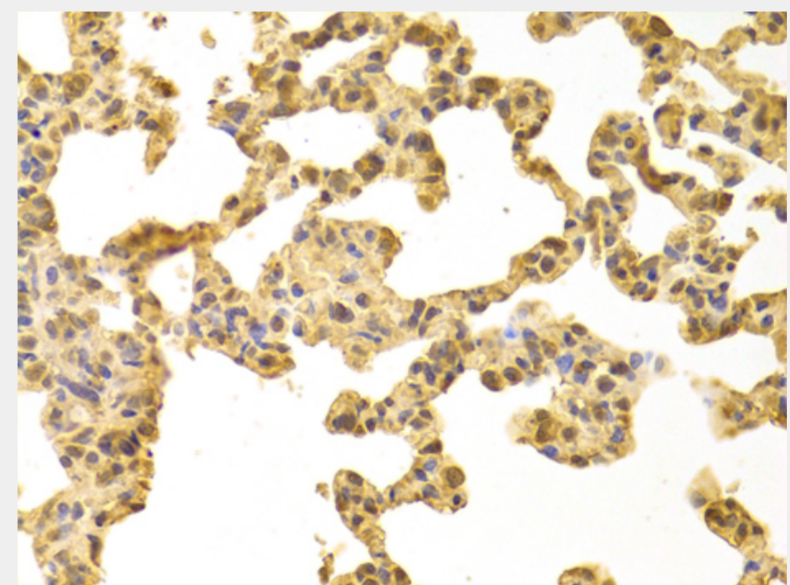


Western blot analysis of extracts of various cell lines, using PPP4C antibody at 1:1000 dilution.

Secondary antibody: HRP Goat Anti-Rabbit IgG (H+L) at 1:10000 dilution.

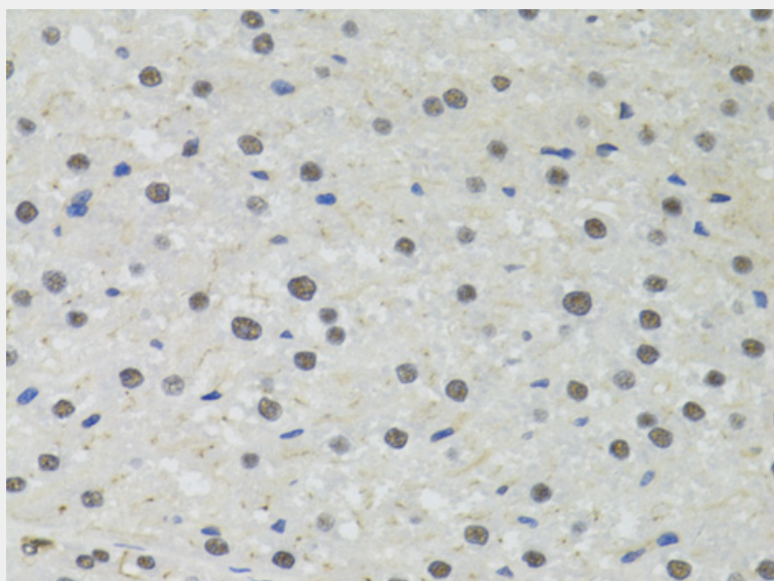
Lysates/proteins: 25ug per lane.

Blocking buffer: 3% nonfat dry milk in TBST.

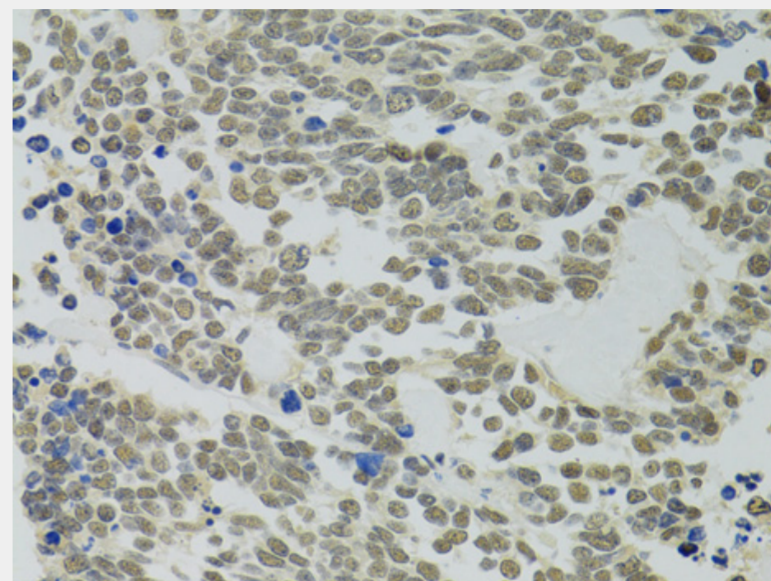


Immunohistochemistry of paraffin-embedded rat lung using PPP4C antibody at dilution of 1:100 (40x lens).

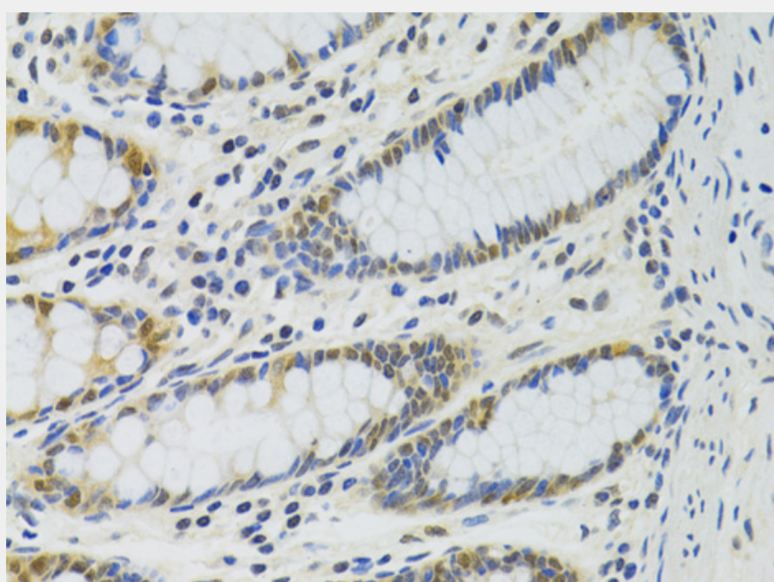




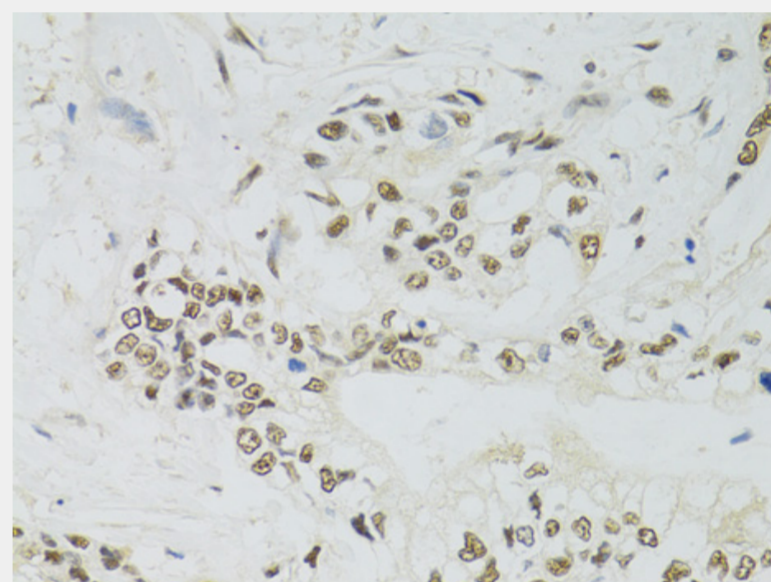
Immunohistochemistry of paraffin-embedded rat liver using PPP4C antibody at dilution of 1:100 (40x lens).



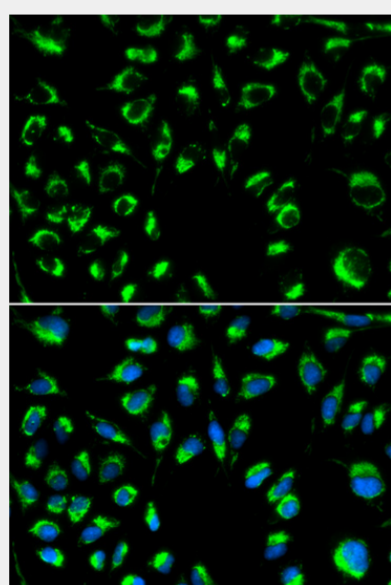
Immunohistochemistry of paraffin-embedded human lung cancer using PPP4C antibody at dilution of 1:100 (40x lens).



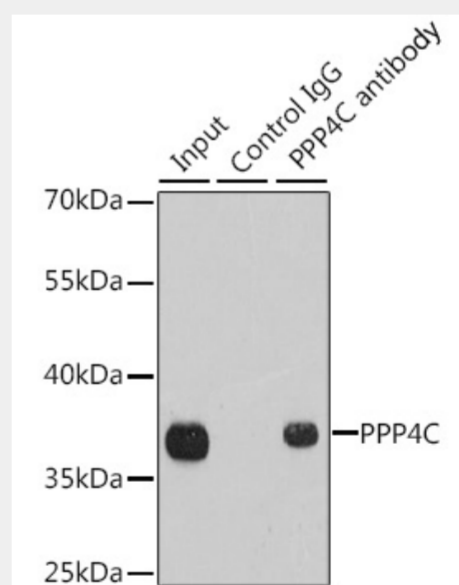
Immunohistochemistry of paraffin-embedded human colon using PPP4C antibody at dilution of 1:100 (40x lens).



Immunohistochemistry of paraffin-embedded human gastric cancer using PPP4C antibody at dilution of 1:100 (40x lens).



Immunofluorescence analysis of MCF-7 cells using PPP4C antibody. Blue: DAPI for nuclear staining.



Immunoprecipitation analysis of 200ug extracts of 293T cells using 1ug PPP4C antibody. Western blot was performed from the immunoprecipitate using PPP4C antibody at a dilution of 1:1000.

All products are for RESEARCH USE ONLY. Not for diagnostic & therapeutic purposes!