

# TNFRSF11B Polyclonal Antibody

Catalog No: tcba7248



## Available Sizes

---

**Size:** 50ul

---

**Size:** 100ul

---

**Size:** 200ul

---



## Specifications

---

**Application:**

WB,IHC,IF

---

**Research Area:**

Cancer,Apoptosis,Cardiovascular,Cell Biology,Immunology,Innate Immunity,Metabolism,NF-κB pathway,

---

**Species Reactivity:**

Human,Mouse,Rat

---

**Host Species:**

Rabbit

---

**Isotype:**

IgG

---

**Form:**

Liquid

---

**Storage Buffer:**

Buffer: PBS with 0.02% sodium azide, 50% glycerol, pH7.3.

---

**Recommended Dilution:**

WB 1:500 - 1:2000

IHC 1:50 - 1:200

IF 1:10 - 1:100

---

**Storage Instruction:**

Store at -20°C. Avoid freeze / thaw cycles.

**Alternative Names:**

OCIF;OPG;PDB5;TR1

**SwissProt:**

O00300

**Gene ID:**

4982 (human);

**Calculated Molecular Weight:**

46kDa

**Purification:**

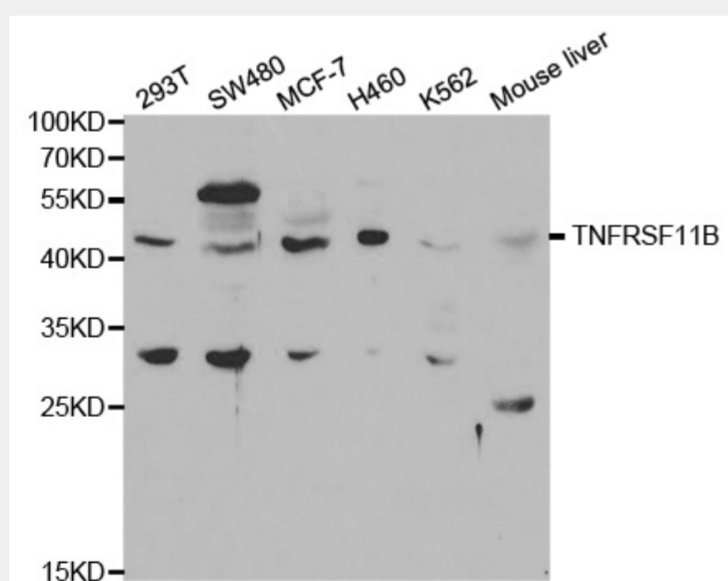
Affinity purification

**Cellular Location:**

Secreted,

**Product Description**

The protein encoded by this gene is a member of the TNF-receptor superfamily. This protein is an osteoblast-secreted decoy receptor that functions as a negative regulator of bone resorption. This protein specifically binds to its ligand, osteoprotegerin ligand, both of which are key extracellular regulators of osteoclast development. Studies of the mouse counterpart also suggest that this protein and its ligand play a role in lymph-node organogenesis and vascular calcification. Alternatively spliced transcript variants of this gene have been reported, but their full length nature has not been determined.

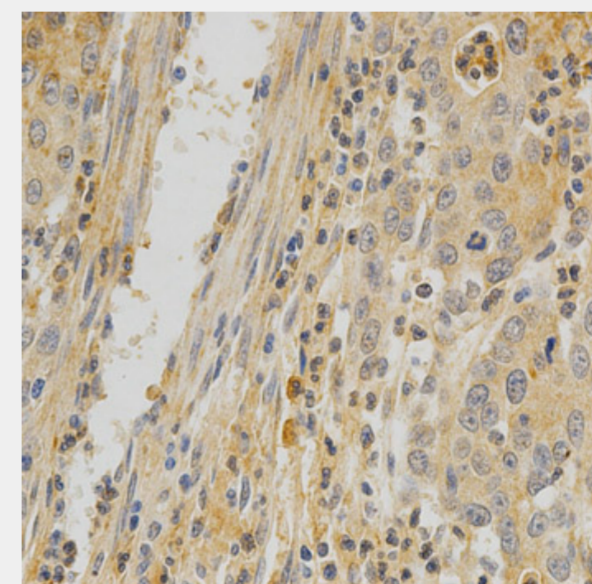


Western blot analysis of extracts of various cell lines, using TNFRSF11B antibody at 1:1000 dilution.

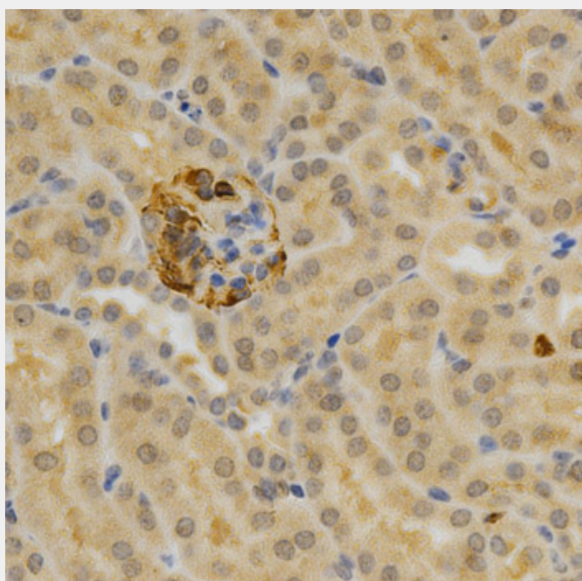
Secondary antibody: HRP Goat Anti-Rabbit IgG (H+L) at 1:10000 dilution.

Lysates/proteins: 25ug per lane.

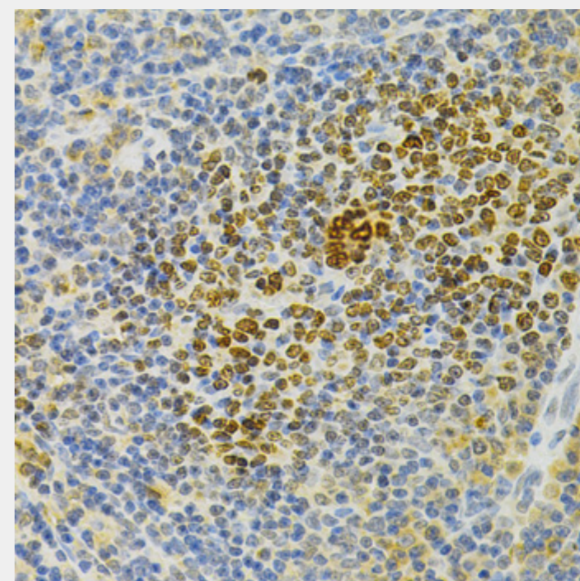
Blocking buffer: 3% nonfat dry milk in TBST.



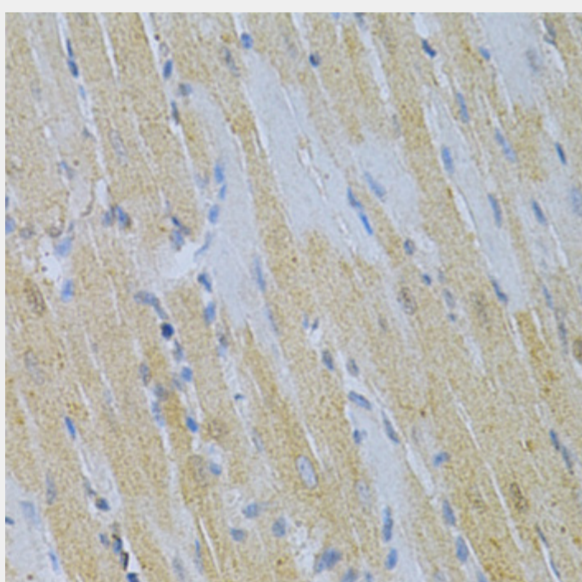
Immunohistochemistry of paraffin-embedded human gastric cancer using TNFRSF11B Antibody at dilution of 1:200 (40x lens).



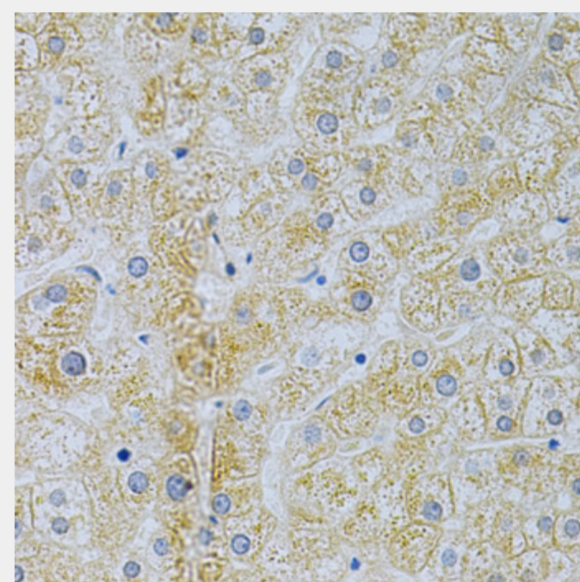
Immunohistochemistry of paraffin-embedded mouse kidney using TNFRSF11B Antibody at dilution of 1:200 (40x lens).



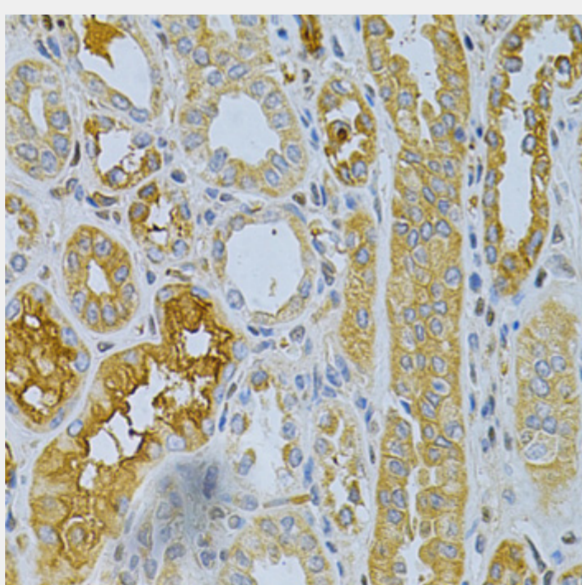
Immunohistochemistry of paraffin-embedded rat spleen using TNFRSF11B Antibody at dilution of 1:200 (40x lens).



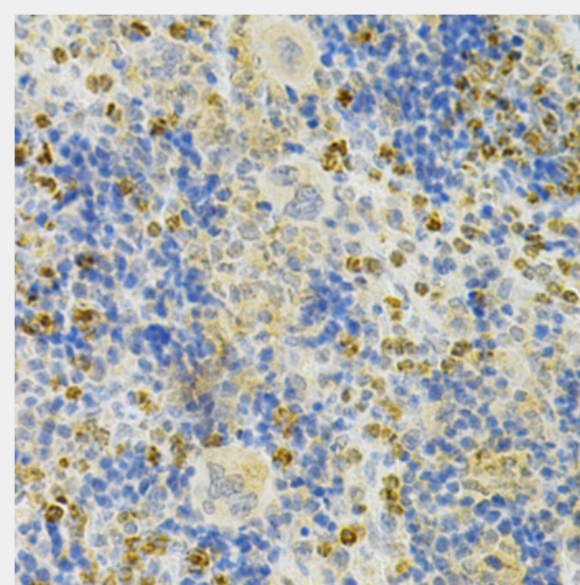
Immunohistochemistry of paraffin-embedded rat heart using TNFRSF11B Antibody at dilution of 1:200 (40x lens).



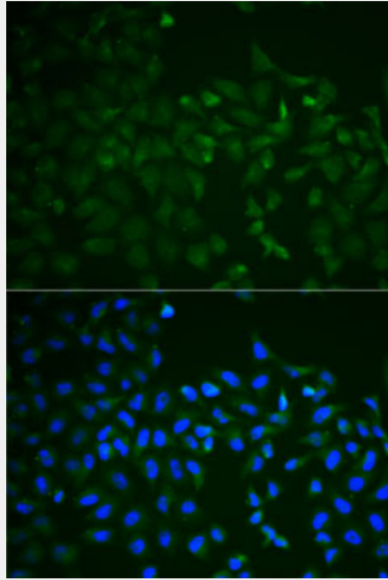
Immunohistochemistry of paraffin-embedded human liver using TNFRSF11B Antibody at dilution of 1:200 (40x lens).



Immunohistochemistry of paraffin-embedded human kidney cancer using TNFRSF11B Antibody at dilution of 1:200 (40x lens).



Immunohistochemistry of paraffin-embedded mouse spleen using TNFRSF11B Antibody at dilution of 1:200 (40x lens).



Immunofluorescence analysis of HeLa cells using TNFRSF11B antibody. Blue: DAPI for nuclear staining.

All products are for RESEARCH USE ONLY. Not for diagnostic & therapeutic purposes!