

IKBKB Polyclonal Antibody

Catalog No: tcba7235



Available Sizes

Size: 50ul

Size: 100ul

Size: 200ul



Specifications

Application:

WB,IHC,IF

Research Area:

Cancer,Apoptosis,Cardiovascular,Cell Biology,Immunology,Innate Immunity,NF-κB pathway,Toll-like Receptor pathway,

Species Reactivity:

Human,Mouse,Rat

Host Species:

Rabbit

Isotype:

IgG

Form:

Liquid

Storage Buffer:

Buffer: PBS with 0.02% sodium azide, 50% glycerol, pH7.3.

Recommended Dilution:

WB 1:500 - 1:2000

IHC 1:50 - 1:200

IF 1:50 - 1:200

Storage Instruction:

Store at -20°C. Avoid freeze / thaw cycles.

Alternative Names:

IKK-beta;IKK2;IKKB;IMD15;NFKB1KB

SwissProt:

O14920

Gene ID:

3551 (human);

Calculated Molecular Weight:

29kDa/79kDa/85kDa/86kDa

Purification:

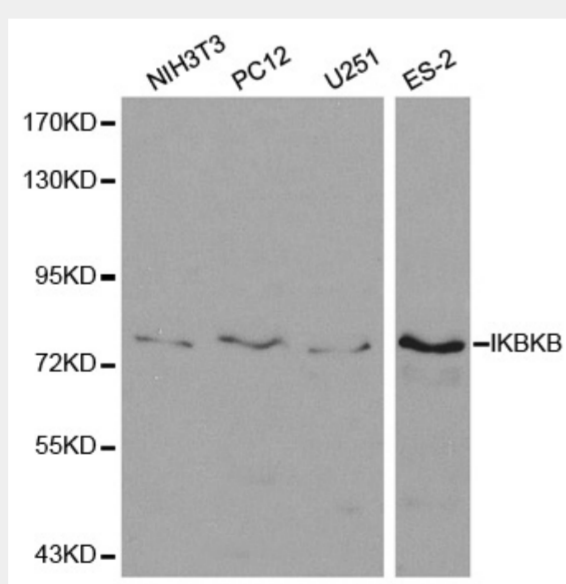
Affinity purification

Cellular Location:

Cytoplasm,Membrane raft,Nucleus,

Product Description

The protein encoded by this gene phosphorylates the inhibitor in the inhibitor/NF-kappa-B complex, causing dissociation of the inhibitor and activation of NF-kappa-B. The encoded protein itself is found in a complex of proteins. Several transcript variants, some protein-coding and some not, have been found for this gene.

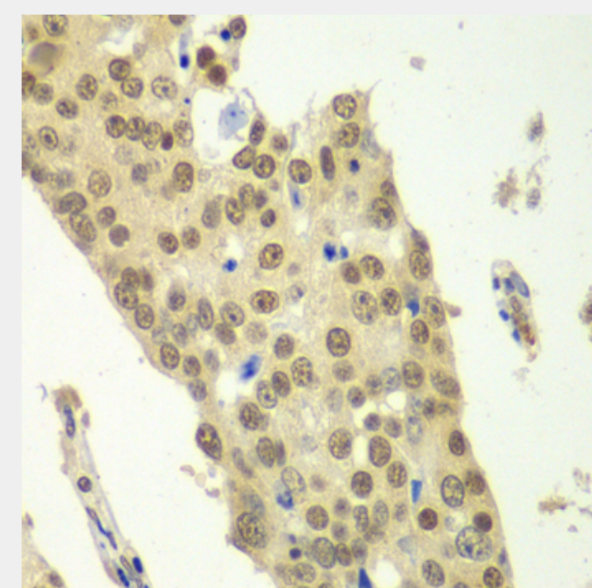


Western blot analysis of extracts of various cell lines, using IKBKB antibody at 1:500 dilution.

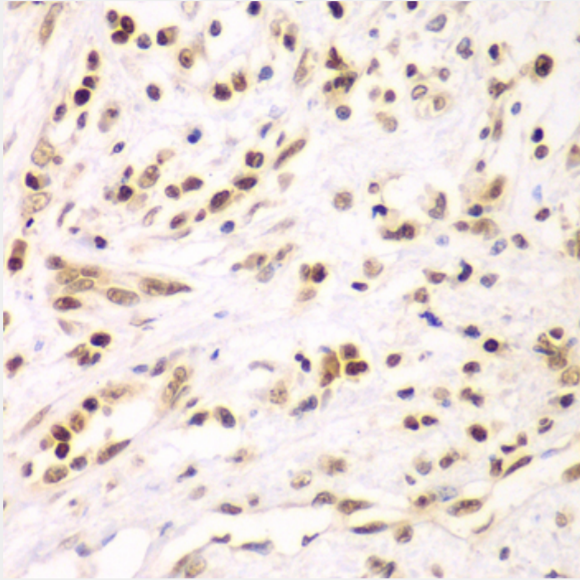
Secondary antibody: HRP Goat Anti-Rabbit IgG (H+L) at 1:10000 dilution.

Lysates/proteins: 25ug per lane.

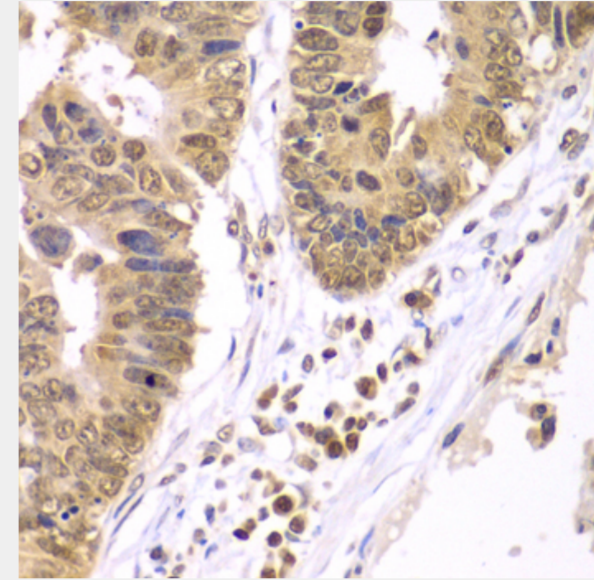
Blocking buffer: 3% nonfat dry milk in TBST.



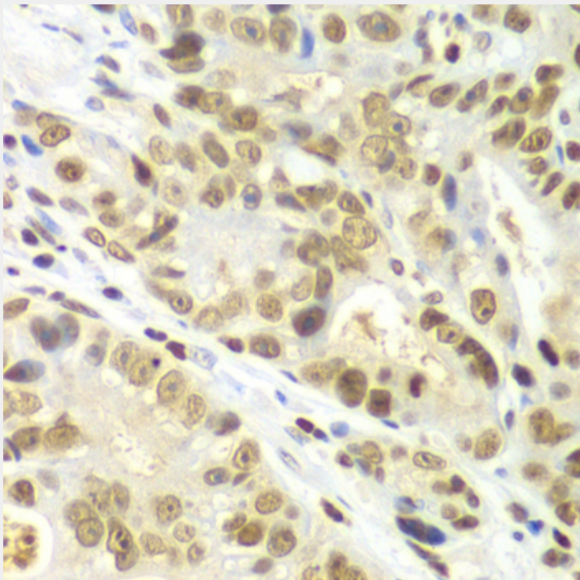
Immunohistochemistry of paraffin-embedded human lung cancer using IKBKB antibody at dilution of 1:100 (40x lens).



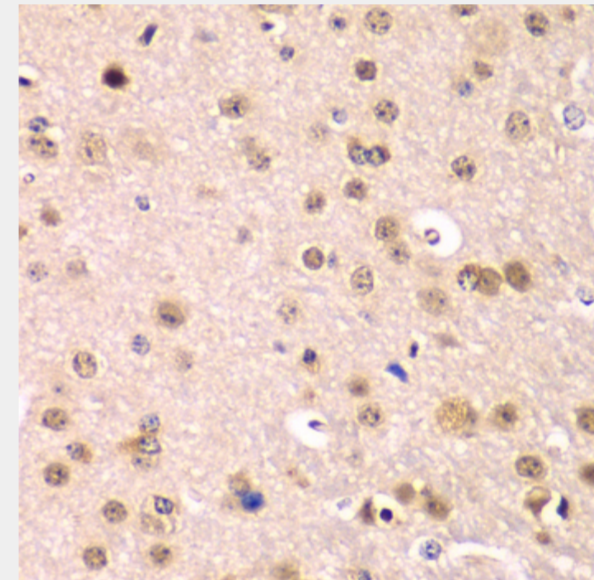
Immunohistochemistry of paraffin-embedded human liver cancer using IKBKB antibody at dilution of 1:100 (40x lens).



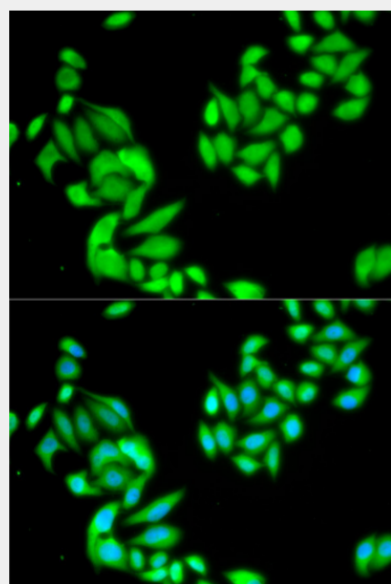
Immunohistochemistry of paraffin-embedded human colon carcinoma using IKBKB antibody at dilution of 1:100 (40x lens).



Immunohistochemistry of paraffin-embedded human gastric cancer using IKBKB antibody at dilution of 1:100 (40x lens).



Immunohistochemistry of paraffin-embedded mouse brain using IKBKB antibody at dilution of 1:100 (40x lens).



Immunofluorescence analysis of HeLa cells using IKBKB antibody. Blue: DAPI for nuclear staining.

All products are for RESEARCH USE ONLY. Not for diagnostic & therapeutic purposes!