

# Polyclonal Antibody to Heat Shock 60kD Protein 1, Chaperonin (HSPD1)

Catalog No: tcua6019



## Available Sizes

---

**Size:** 20ul

---

**Size:** 100ul

---

**Size:** 200ul

---



## Specifications

---

**Application:**

WB; IHC; ICC; IP.

---

**Species Reactivity:**

Mus musculus (Mouse)

---

**Host Species:**

Rabbit

---

**Immunogen / Amino acids:**

Recombinant Heat Shock 60kD Protein 1, Chaperonin (HSPD1)

---

**Conjugation:**

Unconjugated

---

**Clonality:**

Polyclonal

---

**Form:**

Liquid

---

**Storage Buffer:**

0.01M PBS, pH7.4, containing 0.05% Proclin-300, 50% glycerol.

---

**Recommended Dilution:**

Western blotting: 0.5-2ug/ml

Immunocytochemistry in formalin fixed cells: 5-20ug/ml

Immunohistochemistry in formalin fixed frozen section: 5-20ug/ml

Immunohistochemistry in paraffin section: 5-20ug/ml

Enzyme-linked

**Alternative Names:**

HSP60; GROEL; CPN60; HuCHA60; Heat Shock Protein 60; Spastic Paraplegia 13, Autosomal Dominant; 60 kDa chaperonin; Mitochondrial matrix protein P1; P60 lymphocyte protein

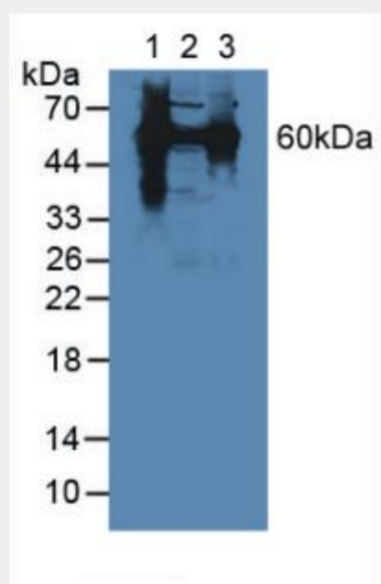


Figure. Western Blot; Sample: Lane1: Mouse Liver Tissue; Lane2: Mouse Lung Tissue; Lane3: Human Hela Cells.)

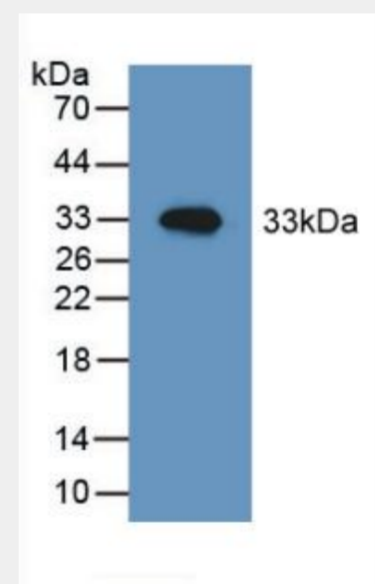


Figure. Western Blot; Sample: Recombinant HSPD1, Mouse.)

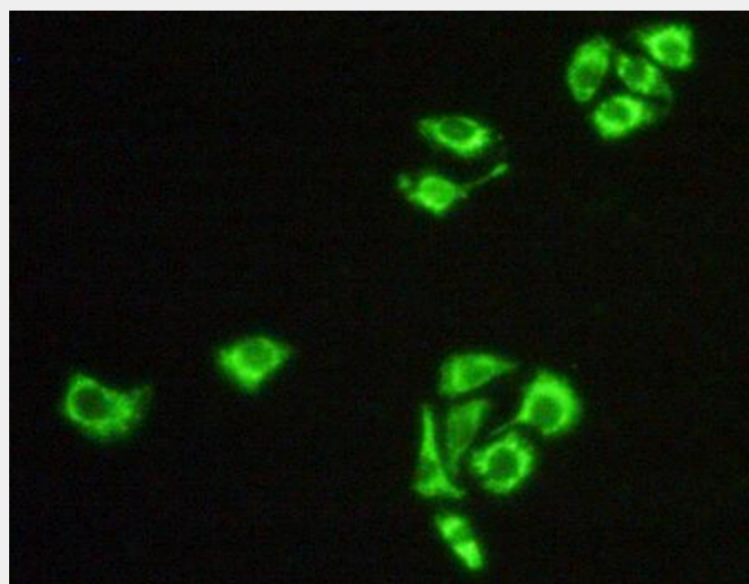


Figure:FITC staining on IHC-P  
Simple: Hela cells)

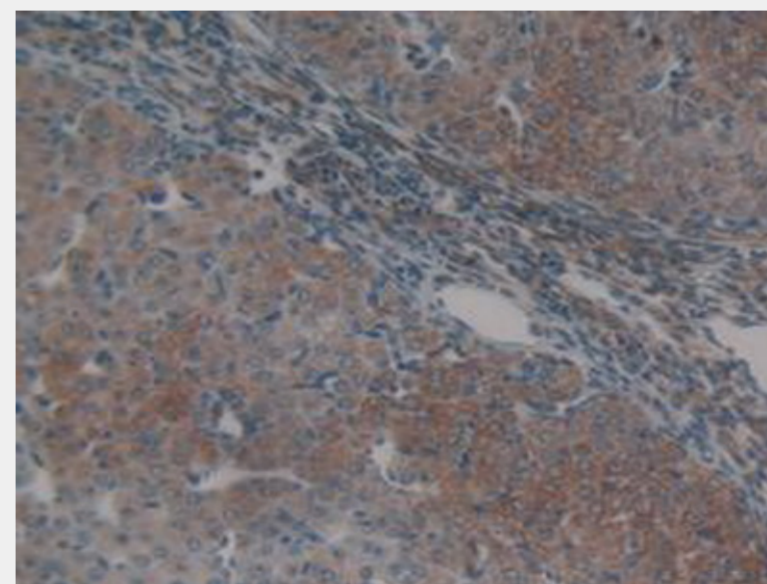


Figure. DAB staining on IHC-P;  
Samples: Mouse Ovary Tissue.)

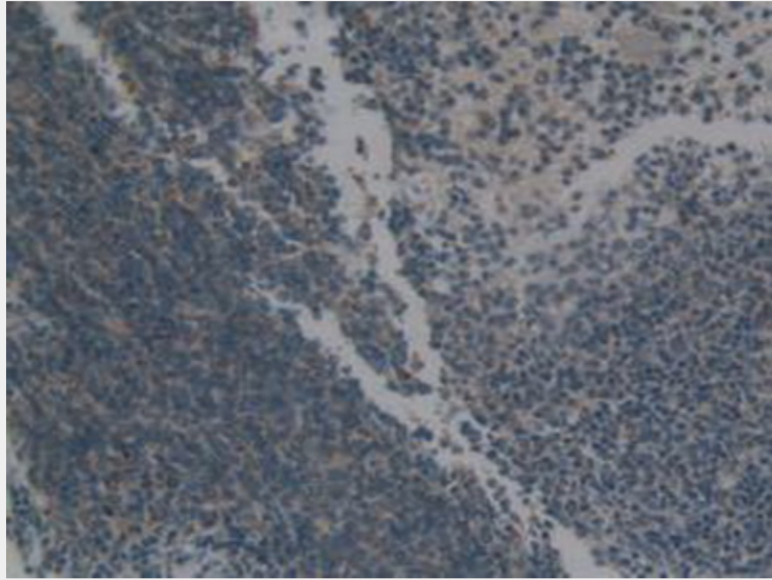


Figure. DAB staining on IHC-P;  
Samples: Mouse Spleen Tissue.)

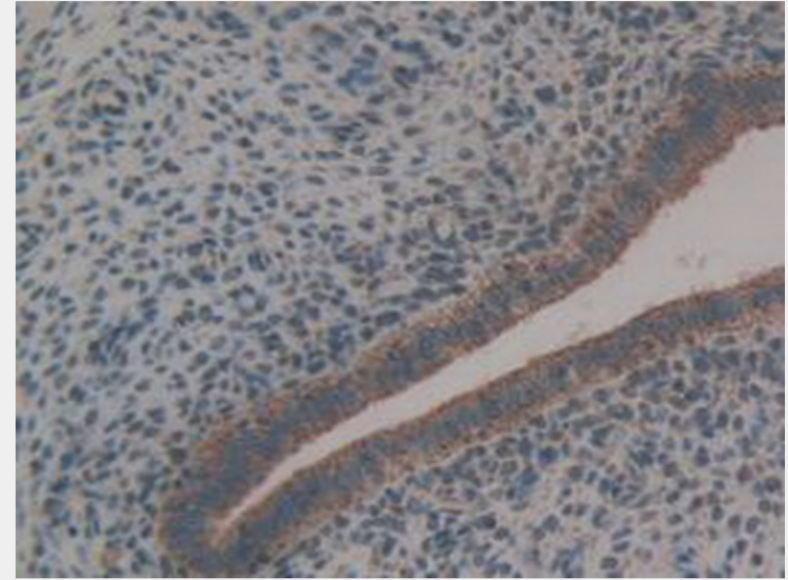


Figure. DAB staining on IHC-P;  
Samples: Mouse Uterus Tissue.)

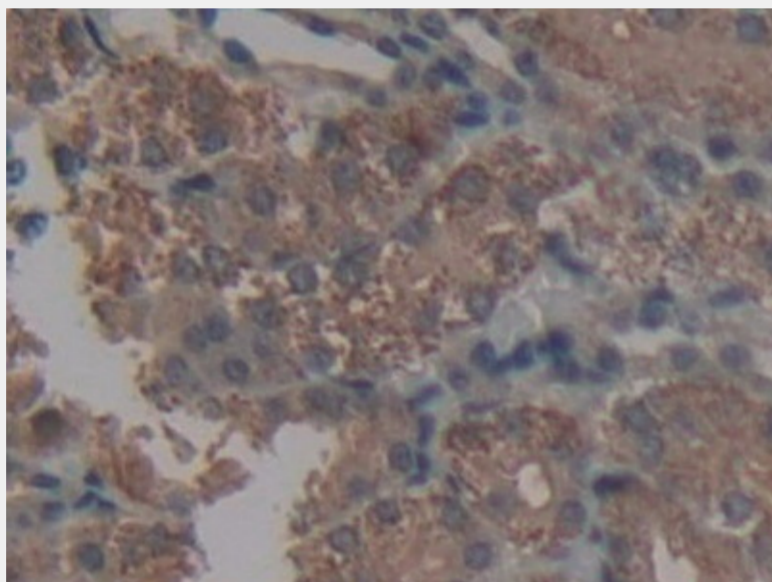


Figure. DAB staining on IHC-P; Samples: Mouse Kidney Tissue.)

All products are for RESEARCH USE ONLY. Not for diagnostic & therapeutic purposes!