

ErbB2 Polyclonal Antibody

Catalog No: tcba7221

KO VALIDATED



Available Sizes

Size: 50ul

Size: 100ul

Size: 200ul



Specifications

Application:

WB,IHC

Research Area:

Cancer,Tumor biomarkers,

Species Reactivity:

Human,Mouse,Rat

Host Species:

Rabbit

Isotype:

IgG

Form:

Liquid

Storage Buffer:

Buffer: PBS with 0.02% sodium azide, 50% glycerol, pH7.3.

Recommended Dilution:

WB 1:500 - 1:2000

IHC 1:50 - 1:200

Storage Instruction:

Store at -20°C. Avoid freeze / thaw cycles.

SwissProt:

P04626

Gene ID:

2064 (human);

Calculated Molecular Weight:

62kDa/70kDa/97kDa/134kDa/136kDa/137kDa

Purification:

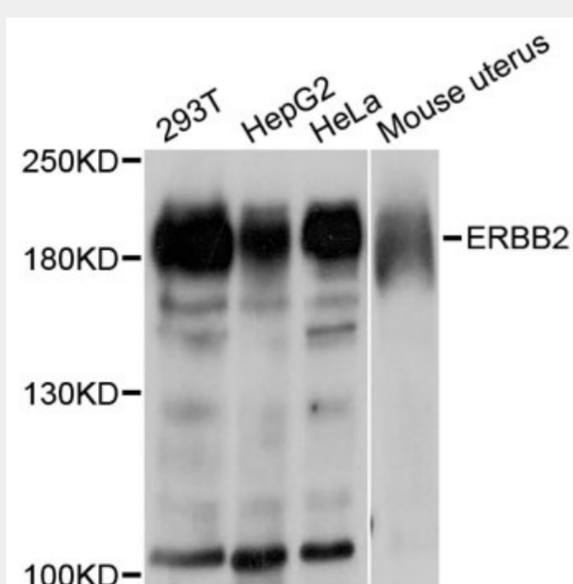
Affinity purification

Cellular Location:

Cell membrane,Cytoplasm,Nucleus,Nucleus,Single-pass type I membrane protein,perinuclear region,

Product Description

This gene encodes a member of the epidermal growth factor (EGF) receptor family of receptor tyrosine kinases. This protein has no ligand binding domain of its own and therefore cannot bind growth factors. However, it does bind tightly to other ligand-bound EGF receptor family members to form a heterodimer, stabilizing ligand binding and enhancing kinase-mediated activation of downstream signalling pathways, such as those involving mitogen-activated protein kinase and phosphatidylinositol-3 kinase. Allelic variations at amino acid positions 654 and 655 of isoform a (positions 624 and 625 of isoform b) have been reported, with the most common allele, Ile654/Ile655, shown here. Amplification and/or overexpression of this gene has been reported in numerous cancers, including breast and ovarian tumors. Alternative splicing results in several additional transcript variants, some encoding different isoforms and others that have not been fully characterized.



Western blot analysis of extracts of various cell lines, using ErbB2 antibody at 1:500 dilution.

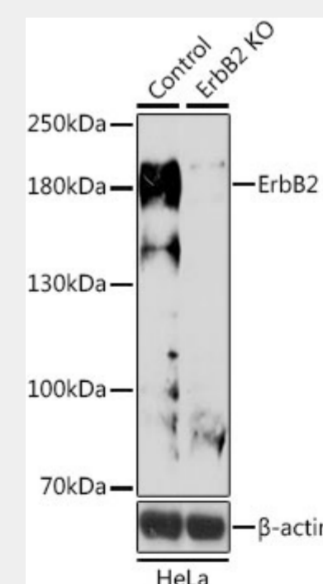
Secondary antibody: HRP Goat Anti-Rabbit IgG (H+L) at 1:10000 dilution.

Lysates/proteins: 25ug per lane.

Blocking buffer: 3% nonfat dry milk in TBST.

Detection: ECL Basic Kit.

Exposure time: 90s.



Western blot analysis of extracts from normal (control) and ErbB2 knockout (KO) HeLa cells, using ErbB2 antibody at 1:500 dilution.

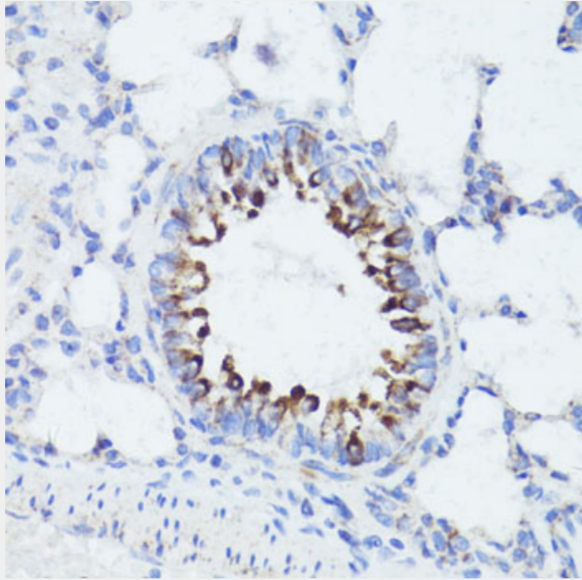
Secondary antibody: HRP Goat Anti-Rabbit IgG (H+L) at 1:10000 dilution.

Lysates/proteins: 25ug per lane.

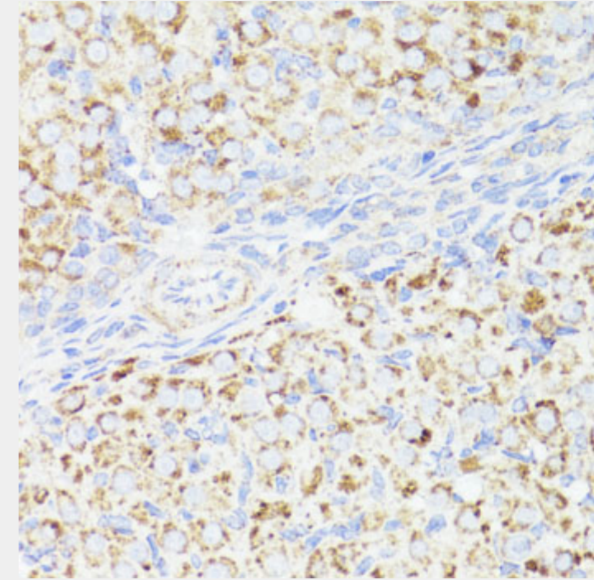
Blocking buffer: 3% nonfat dry milk in TBST.

Detection: ECL Basic Kit.

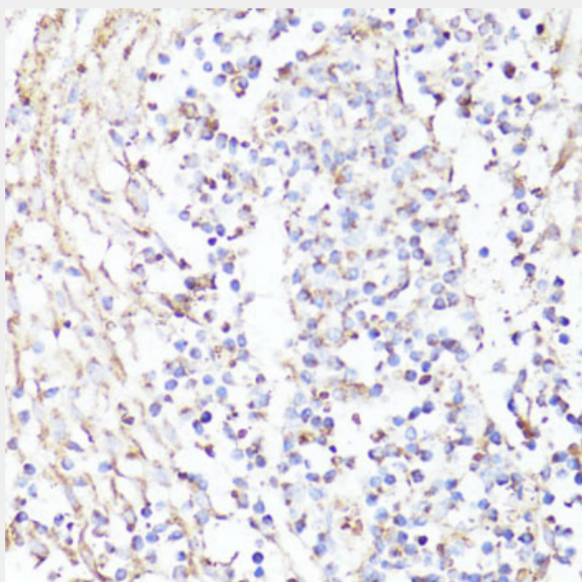
Exposure time: 5min.



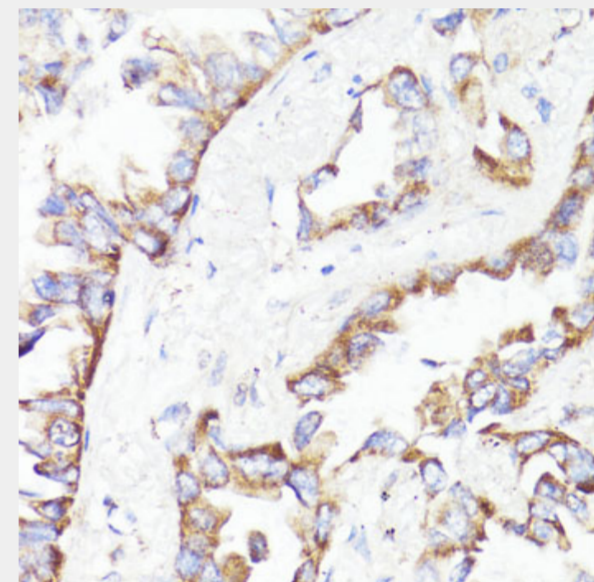
Immunohistochemistry of paraffin-embedded rat lung using ErbB2 antibody at dilution of 1:100 (40x lens).



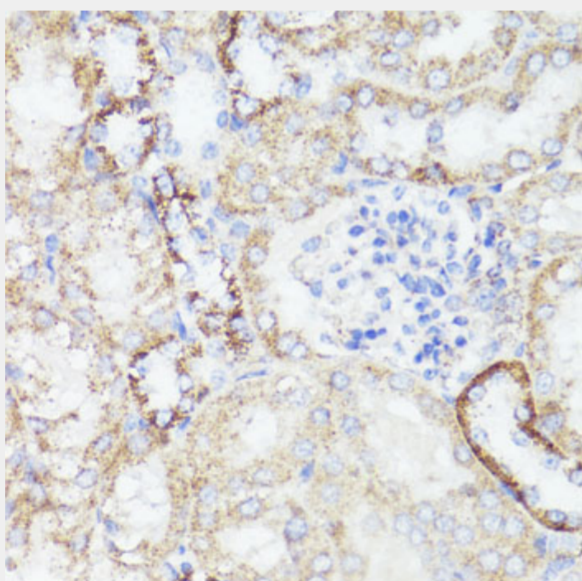
Immunohistochemistry of paraffin-embedded rat ovary using ErbB2 antibody at dilution of 1:100 (40x lens).



Immunohistochemistry of paraffin-embedded human tonsil using ErbB2 antibody at dilution of 1:100 (40x lens).



Immunohistochemistry of paraffin-embedded human lung cancer using ErbB2 antibody at dilution of 1:100 (40x lens).



Immunohistochemistry of paraffin-embedded mouse kidney using ErbB2 antibody at dilution of 1:100 (40x lens).

All products are for RESEARCH USE ONLY. Not for diagnostic & therapeutic purposes!