

RUNX1 Polyclonal Antibody

Catalog No: tcba7205



Available Sizes

Size: 50ul

Size: 100ul

Size: 200ul



Specifications

Application:

WB,IHC,IF

Research Area:

Cancer,Hippo pathway,Developmental Biology,Epigenetics,

Species Reactivity:

Human,Mouse,Rat

Host Species:

Rabbit

Isotype:

IgG

Form:

Liquid

Storage Buffer:

Buffer: PBS with 0.02% sodium azide, 50% glycerol, pH7.3.

Recommended Dilution:

WB 1:500 - 1:2000

IHC 1:50 - 1:100

IF 1:50 - 1:200

Storage Instruction:

Store at -20°C. Avoid freeze / thaw cycles.

Alternative Names:

AML1;AML1-EVI-1;AMLCR1;CBF2alpha;CBFA2;EVI-1;PEBP2aB;PEBP2alpha

SwissProt:

Q01196

Gene ID:

861 (human);

Calculated Molecular Weight:

20-28kDa/37kDa/48-51kDa

Purification:

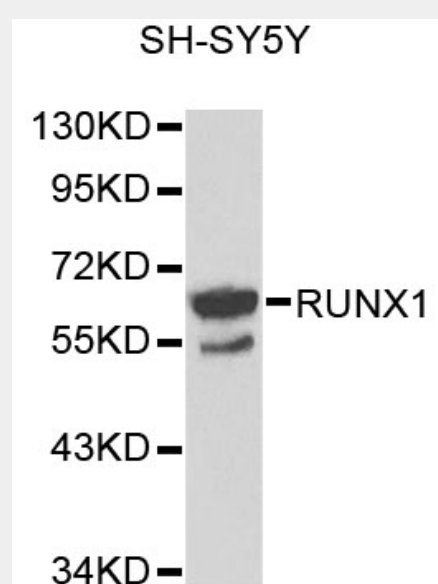
Affinity purification

Cellular Location:

Nucleus,

Product Description

Core binding factor (CBF) is a heterodimeric transcription factor that binds to the core element of many enhancers and promoters. The protein encoded by this gene represents the alpha subunit of CBF and is thought to be involved in the development of normal hematopoiesis. Chromosomal translocations involving this gene are well-documented and have been associated with several types of leukemia. Three transcript variants encoding different isoforms have been found for this gene.



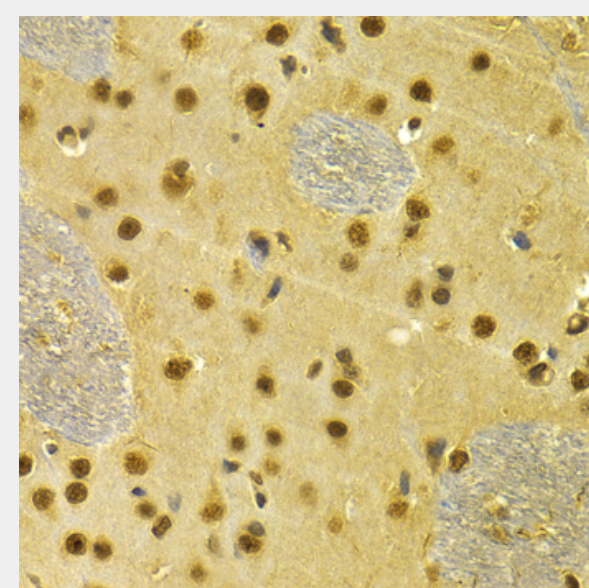
Western blot analysis of extracts of SH-SY5Y cells, using RUNX1 antibody at 1:1000 dilution.

Secondary antibody: HRP Goat Anti-Rabbit IgG (H+L) at 1:10000 dilution.

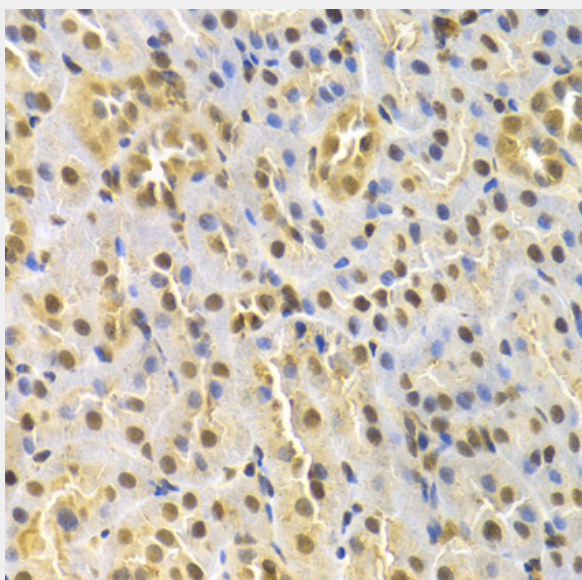
Lysates/proteins: 25ug per lane.

Blocking buffer: 3% nonfat dry milk in TBST.

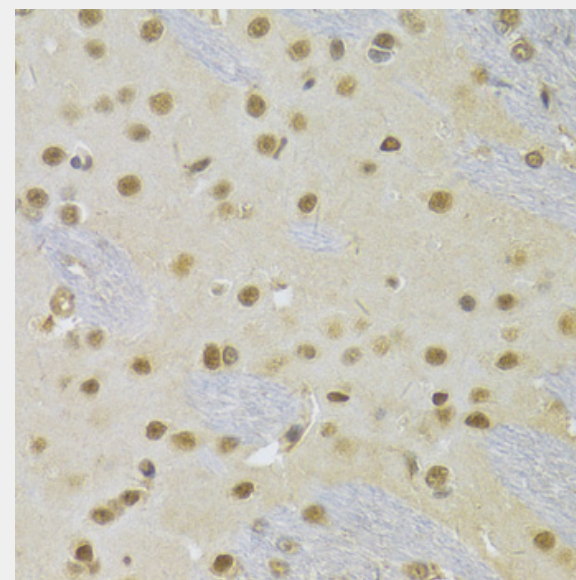
Detection: ECL Basic Kit.



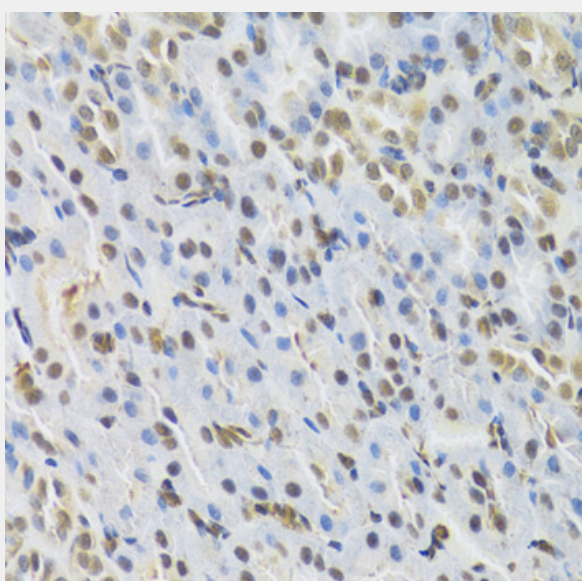
Immunohistochemistry of paraffin-embedded rat brain using RUNX1 Antibody at dilution of 1:100 (40x lens).



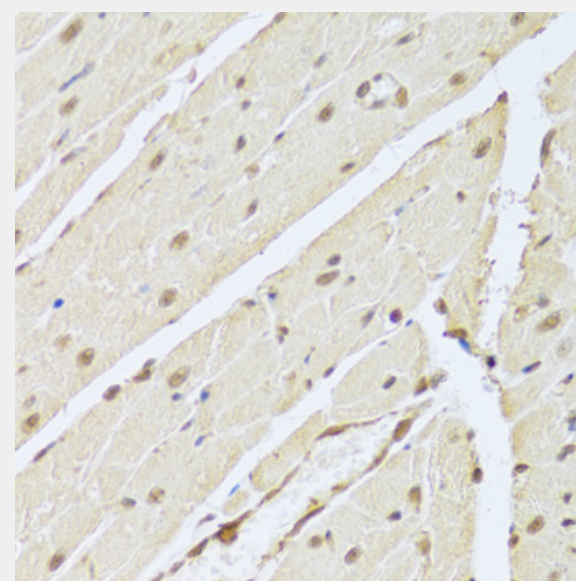
Immunohistochemistry of paraffin-embedded rat kidney using RUNX1 Antibody at dilution of 1:100 (40x lens).



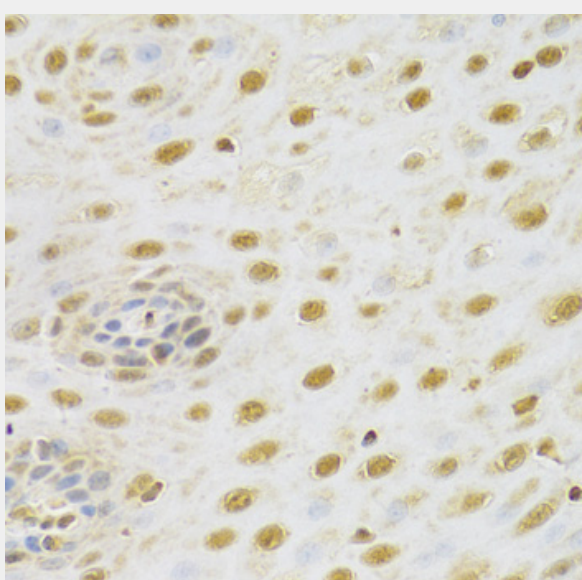
Immunohistochemistry of paraffin-embedded rat brain using RUNX1 Antibody at dilution of 1:100 (40x lens).



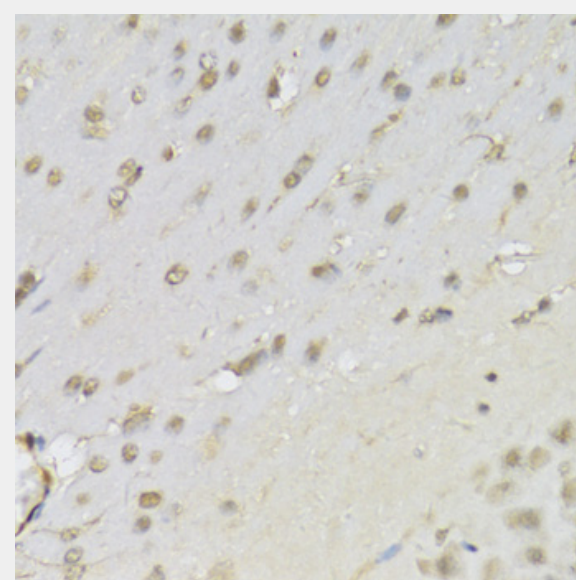
Immunohistochemistry of paraffin-embedded rat kidney using RUNX1 Antibody at dilution of 1:100 (40x lens).



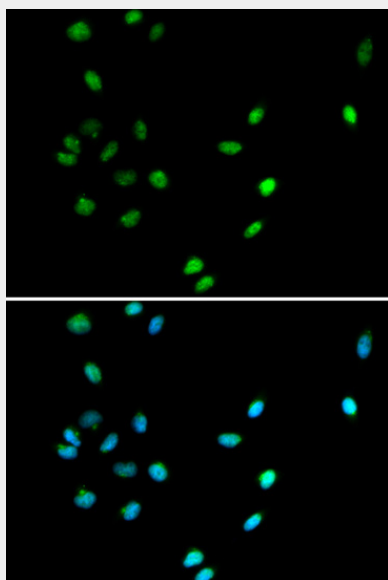
Immunohistochemistry of paraffin-embedded rat heart using RUNX1 Antibody at dilution of 1:100 (40x lens).



Immunohistochemistry of paraffin-embedded human esophageal cancer using RUNX1 Antibody at dilution of 1:100 (40x lens).



Immunohistochemistry of paraffin-embedded mouse brain using RUNX1 Antibody at dilution of 1:100 (40x lens).



Immunofluorescence analysis of A549 cells using RUNX1 antibody. Blue: DAPI for nuclear staining.

All products are for RESEARCH USE ONLY. Not for diagnostic & therapeutic purposes!