

# MT2A Polyclonal Antibody

Catalog No: tcba7170



## Available Sizes

**Size:** 50ul

**Size:** 100ul

**Size:** 200ul



## Specifications

**Application:**

WB,IHC

**Species Reactivity:**

Human,Mouse,Rat

**Host Species:**

Rabbit

**Isotype:**

IgG

**Form:**

Liquid

**Storage Buffer:**

Buffer: PBS with 0.02% sodium azide, 50% glycerol, pH7.3.

**Recommended Dilution:**

WB 1:500 - 1:2000

IHC 1:50 - 1:200

**Storage Instruction:**

Store at -20°C. Avoid freeze / thaw cycles.

**Alternative Names:**

MT2

**SwissProt:**

P02795

**Gene ID:**

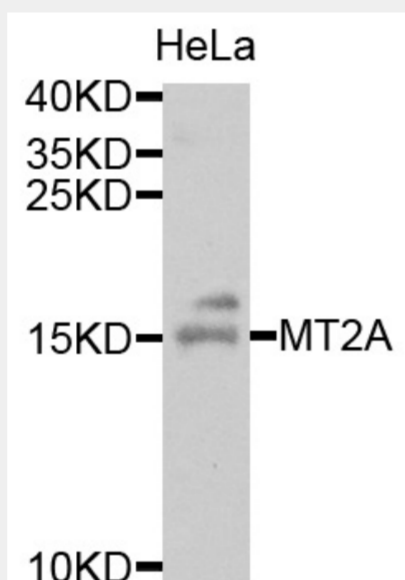
4502 (human);

**Calculated Molecular Weight:**

6kDa

**Purification:**

Affinity purification

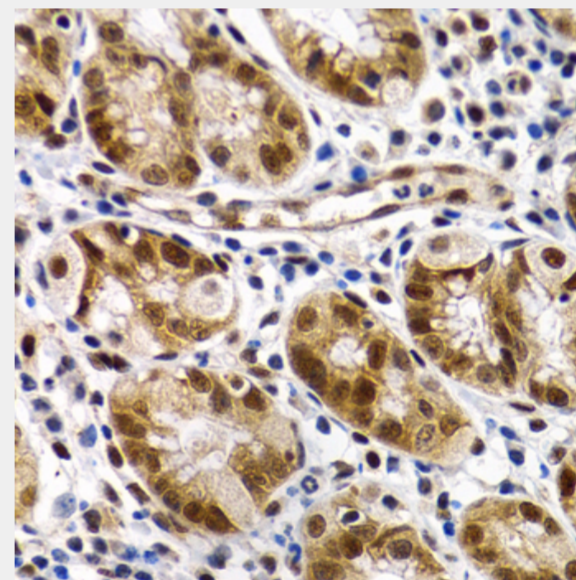


Western blot analysis of extracts of HeLa cells, using MT2A antibody at 1:1000 dilution.

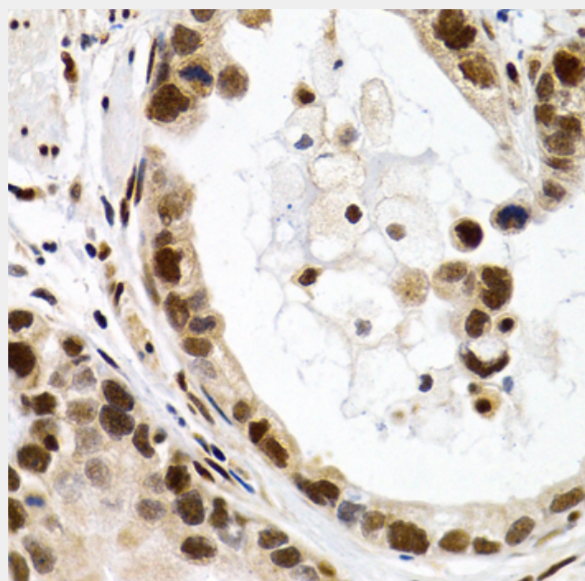
Secondary antibody: HRP Goat Anti-Rabbit IgG (H+L) at 1:10000 dilution.

Lysates/proteins: 25ug per lane.

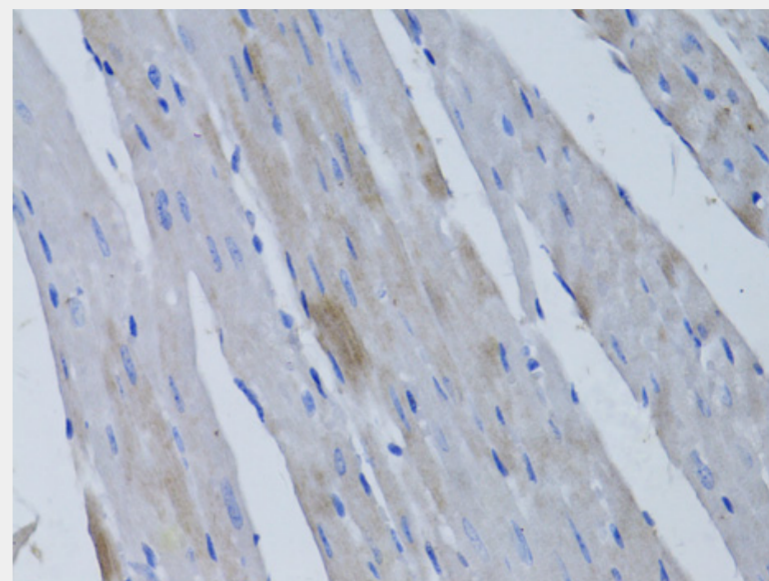
Blocking buffer: 3% nonfat dry milk in TBST.



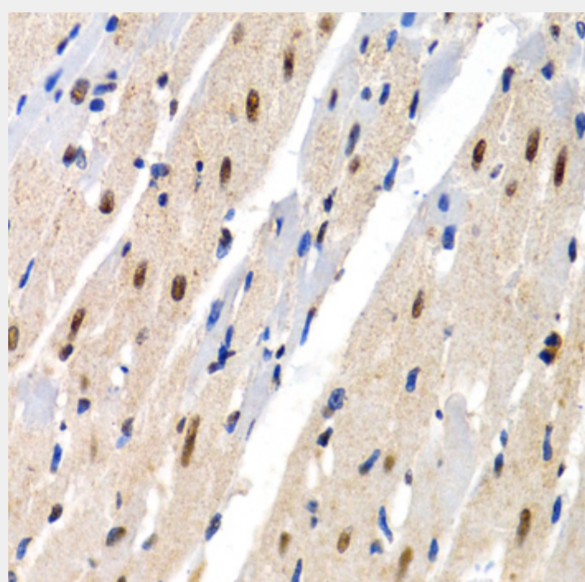
Immunohistochemistry of paraffin-embedded human normal stomach using MT2A antibody at dilution of 1:200 (40x lens).



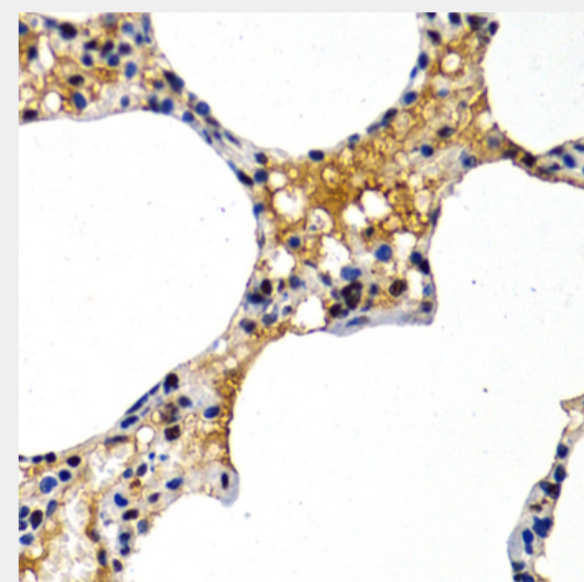
Immunohistochemistry of paraffin-embedded human stomach cancer using MT2A antibody at dilution of 1:200 (40x lens).



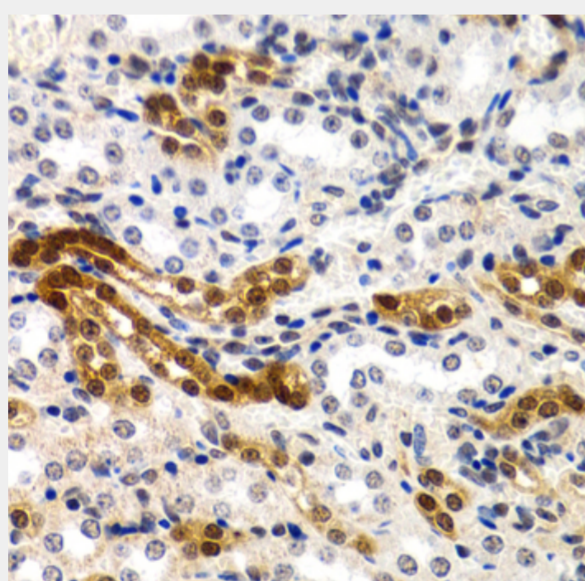
Immunohistochemistry of paraffin-embedded rat heart using MT2A antibody at dilution of 1:50 (40x lens).



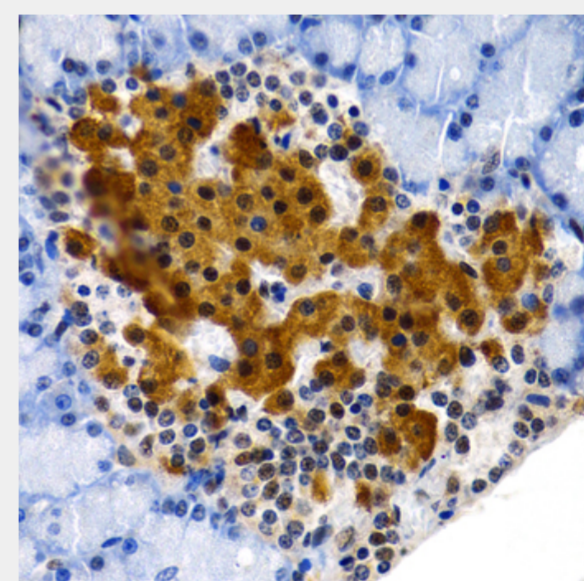
Immunohistochemistry of paraffin-embedded rat heart using MT2A antibody at dilution of 1:200 (40x lens).



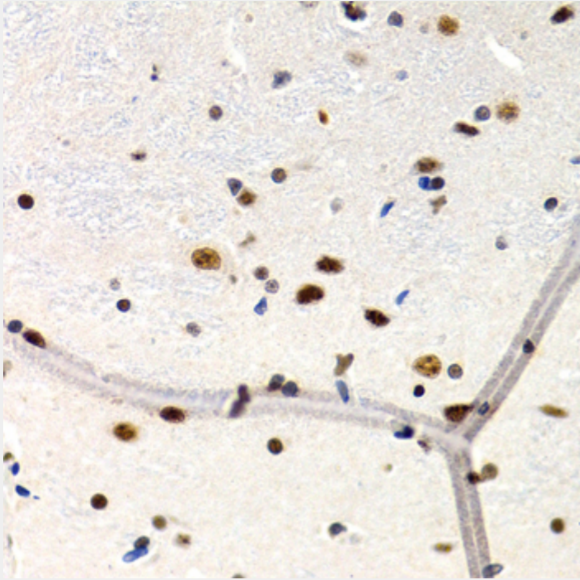
Immunohistochemistry of paraffin-embedded rat lung using MT2A antibody at dilution of 1:200 (40x lens).



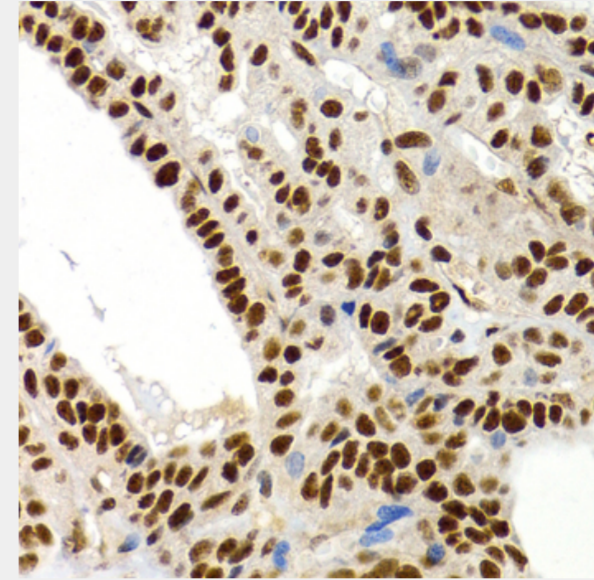
Immunohistochemistry of paraffin-embedded rat kidney using MT2A antibody at dilution of 1:200 (40x lens).



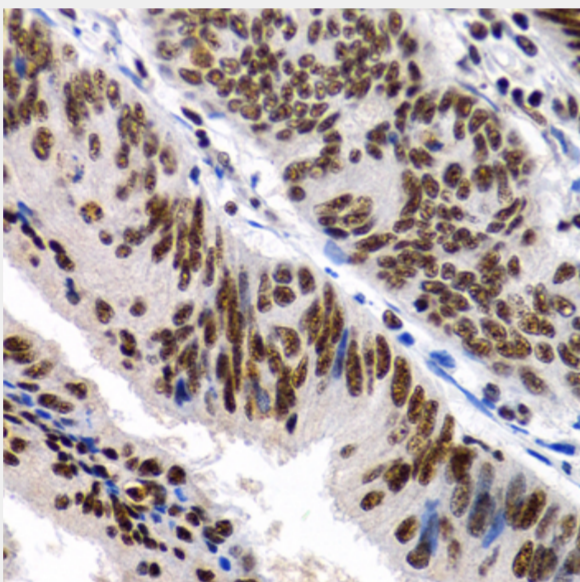
Immunohistochemistry of paraffin-embedded rat pancreas using MT2A antibody at dilution of 1:200 (40x lens).



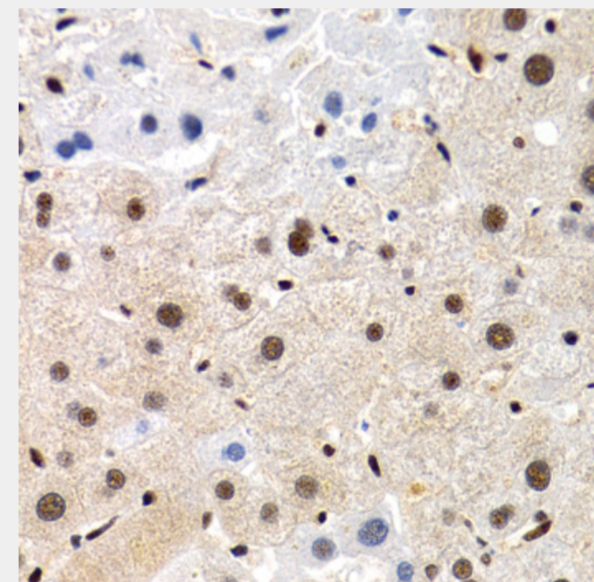
Immunohistochemistry of paraffin-embedded rat brain using MT2A antibody at dilution of 1:200 (40x lens).



Immunohistochemistry of paraffin-embedded human thyroid cancer using MT2A antibody at dilution of 1:200 (40x lens).



Immunohistochemistry of paraffin-embedded human colon cancer using MT2A antibody at dilution of 1:200 (40x lens).



Immunohistochemistry of paraffin-embedded human liver cancer using MT2A antibody at dilution of 1:200 (40x lens).

All products are for RESEARCH USE ONLY. Not for diagnostic & therapeutic purposes!