

# ACVR2A Polyclonal Antibody

Catalog No: tcba7135



## Available Sizes

---

**Size:** 50ul

**Size:** 100ul

**Size:** 200ul



## Specifications

---

**Application:**

WB,IHC,IF

**Research Area:**

Stem cells,Cell Biology,Metabolism,Amino Acids,

**Species Reactivity:**

Human,Mouse,Rat

**Host Species:**

Rabbit

**Isotype:**

IgG

**Form:**

Liquid

**Storage Buffer:**

Buffer: PBS with 0.02% sodium azide, 50% glycerol, pH7.3.

**Recommended Dilution:**

WB 1:500 - 1:2000

IHC 1:100 - 1:200

IF 1:50 - 1:200

**Storage Instruction:**

Store at -20°C. Avoid freeze / thaw cycles.

---

**Alternative Names:**

ACTRII;ACVR2

---

**SwissProt:**

P27037

---

**Gene ID:**

92 (human);

---

**Calculated Molecular Weight:**

45kDa/57kDa

---

**Purification:**

Affinity purification

---

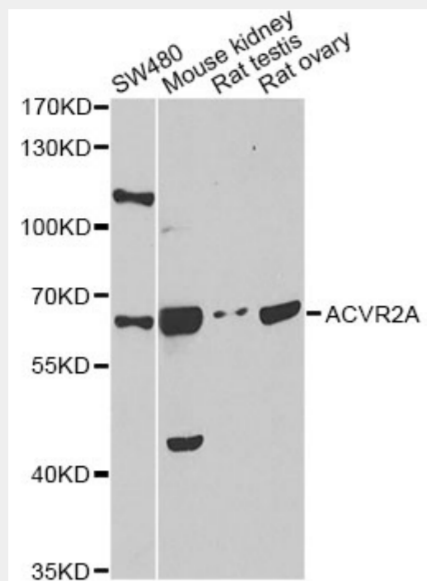
**Cellular Location:**

Membrane,Single-pass type I membrane protein,

---

**Product Description**

This gene encodes a receptor that mediates the functions of activins, which are members of the transforming growth factor-beta (TGF-beta) superfamily involved in diverse biological processes. The encoded protein is a transmembrane serine-threonine kinase receptor which mediates signaling by forming heterodimeric complexes with various combinations of type I and type II receptors and ligands in a cell-specific manner. The encoded type II receptor is primarily involved in ligand-binding and includes an extracellular ligand-binding domain, a transmembrane domain and a cytoplasmic serine-threonine kinase domain. This gene may be associated with susceptibility to preeclampsia, a pregnancy-related disease which can result in maternal and fetal morbidity and mortality. Alternative splicing results in multiple transcript variants of this gene.



Western blot analysis of extracts of various cell lines, using ACVR2A antibody at 1:1000 dilution.

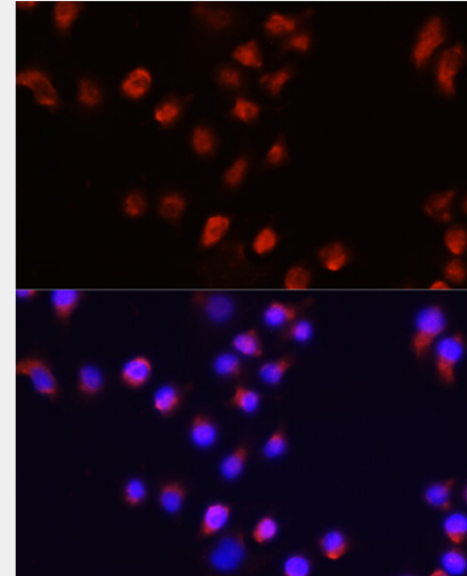
Secondary antibody: HRP Goat Anti-Rabbit IgG (H+L) at 1:10000 dilution.

Lysates/proteins: 25ug per lane.

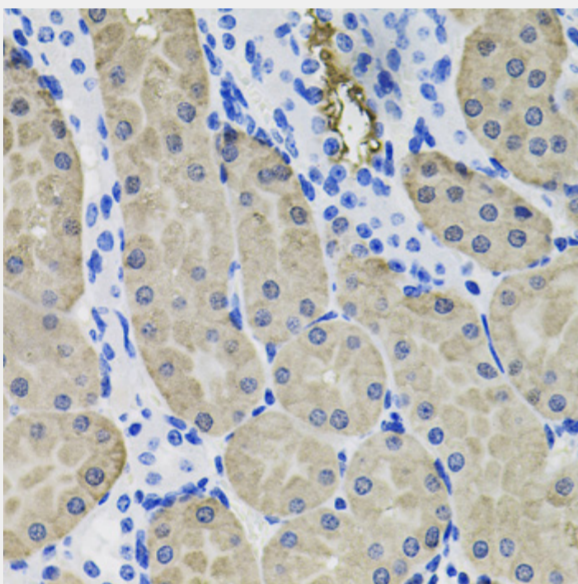
Blocking buffer: 3% nonfat dry milk in TBST.

Detection: ECL Enhanced Kit.

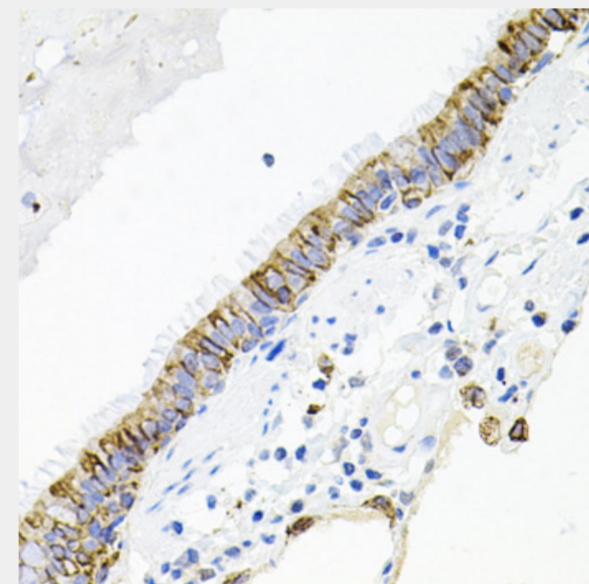
Exposure time: 30s.



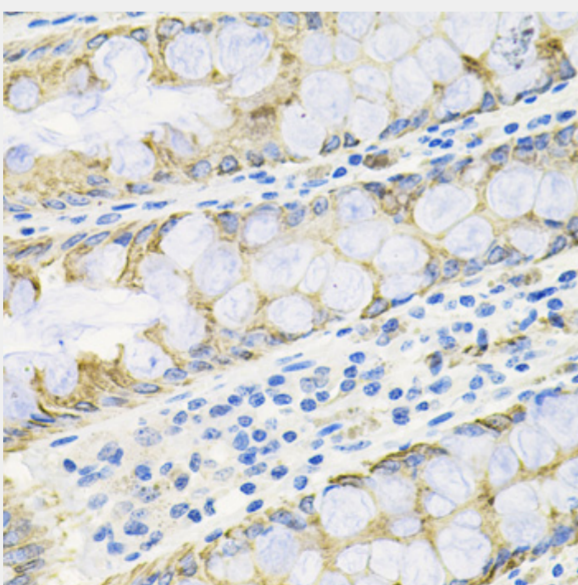
Immunofluorescence analysis of A431 cells using ACVR2A antibody at dilution of 1:100 (40x lens). Blue: DAPI for nuclear staining.



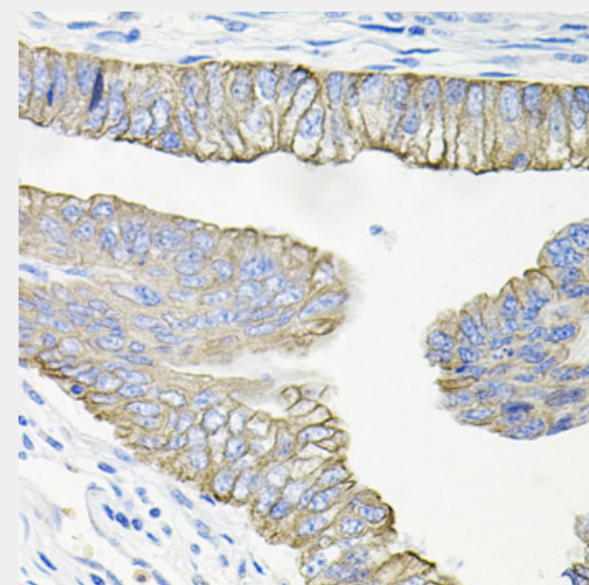
Immunohistochemistry of paraffin-embedded mouse kidney using ACVR2A antibody at dilution of 1:100 (40x lens).



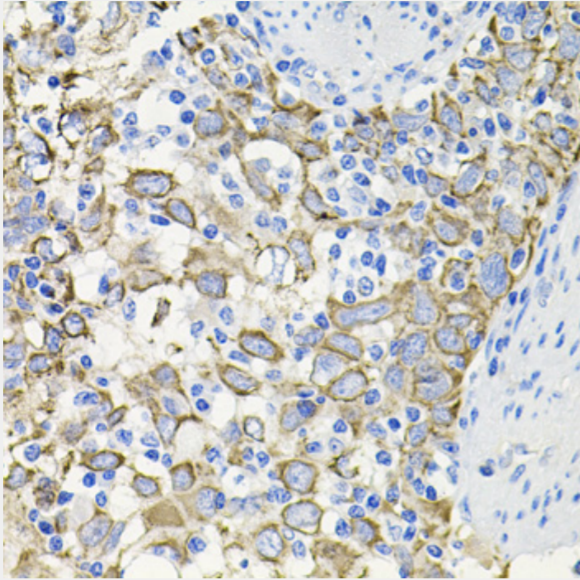
Immunohistochemistry of paraffin-embedded human lung using ACVR2A antibody at dilution of 1:100 (40x lens).



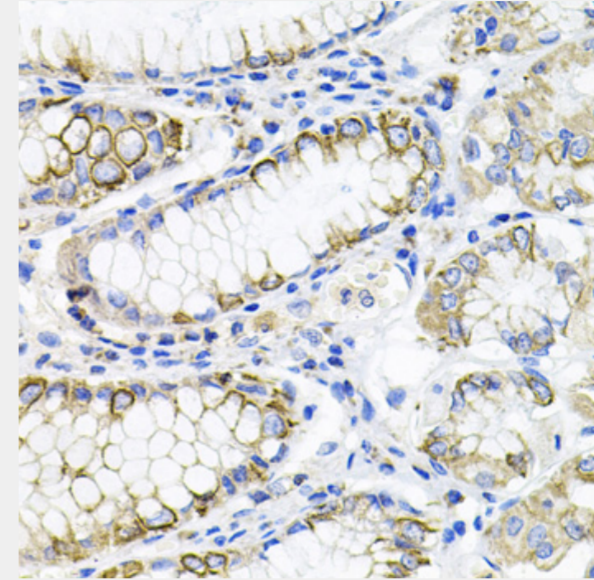
Immunohistochemistry of paraffin-embedded human colon using ACVR2A antibody at dilution of 1:100 (40x lens).



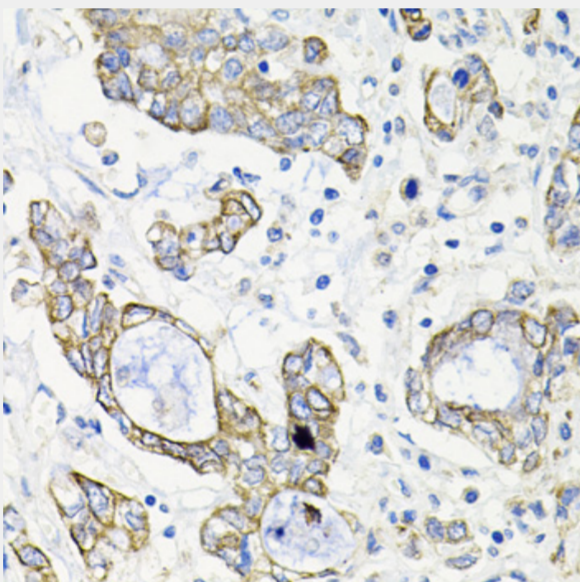
Immunohistochemistry of paraffin-embedded human colon carcinoma using ACVR2A antibody at dilution of 1:100 (40x lens).



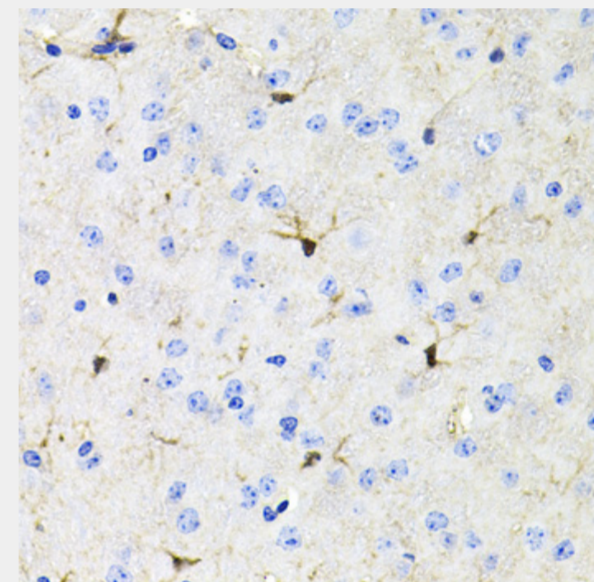
Immunohistochemistry of paraffin-embedded human esophageal cancer using ACVR2A antibody at dilution of 1:100 (40x lens).



Immunohistochemistry of paraffin-embedded human stomach using ACVR2A antibody at dilution of 1:100 (40x lens).



Immunohistochemistry of paraffin-embedded human gastric cancer using ACVR2A antibody at dilution of 1:100 (40x lens).



Immunohistochemistry of paraffin-embedded mouse brain using ACVR2A antibody at dilution of 1:100 (40x lens).

All products are for RESEARCH USE ONLY. Not for diagnostic & therapeutic purposes!