

# RAB27A Polyclonal Antibody

Catalog No: tcba7088

**KO** VALIDATED



## Available Sizes

Size: 50ul

Size: 100ul

Size: 200ul



## Specifications

### Application:

WB,IHC,IF

### Research Area:

Cancer,Apoptosis,

### Species Reactivity:

Human,Mouse

### Host Species:

Rabbit

### Isotype:

IgG

### Form:

Liquid

### Storage Buffer:

Buffer: PBS with 0.02% sodium azide, 50% glycerol, pH7.3.

### Recommended Dilution:

WB 1:500 - 1:2000

IHC 1:50 - 1:200

IF 1:10 - 1:100

**Storage Instruction:**

Store at -20°C. Avoid freeze / thaw cycles.

**Alternative Names:**

GS2;HsT18676;RAB27;RAM

**SwissProt:**

P51159

**Gene ID:**

5873 (human);

**Calculated Molecular Weight:**

24kDa

**Purification:**

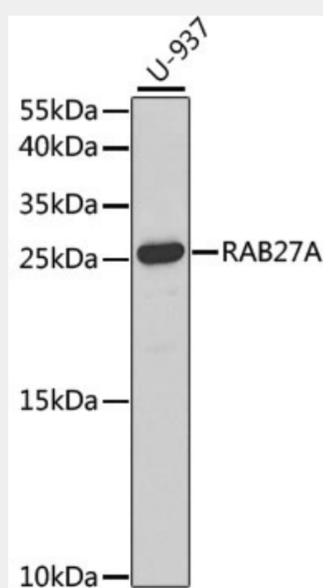
Affinity purification

**Cellular Location:**

Late endosome,Lipid-anchor,Lysosome,Melanosome,Membrane,

**Product Description**

The protein encoded by this gene belongs to the small GTPase superfamily, Rab family. The protein is membrane-bound and may be involved in protein transport and small GTPase mediated signal transduction. Mutations in this gene are associated with Griscelli syndrome type 2. Alternative splicing occurs at this locus and four transcript variants encoding the same protein have been identified.



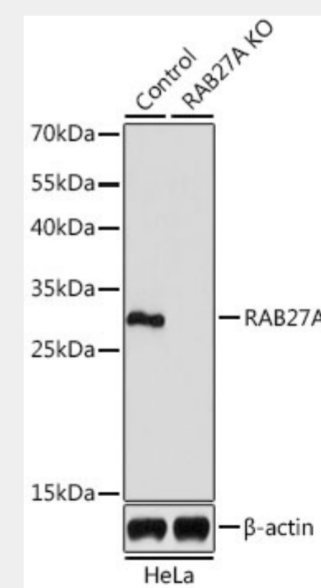
Western blot analysis of extracts of U-937 cells, using RAB27A antibody at 1:1000 dilution.

Secondary antibody: HRP Goat Anti-Rabbit IgG (H+L) at 1:10000 dilution.

Lysates/proteins: 25ug per lane.

Blocking buffer: 3% nonfat dry milk in TBST.

Detection: ECL Basic Kit.



Western blot analysis of extracts from normal (control) and RAB27A knockout (KO) HeLa cells, using RAB27A antibody at 1:1000 dilution.

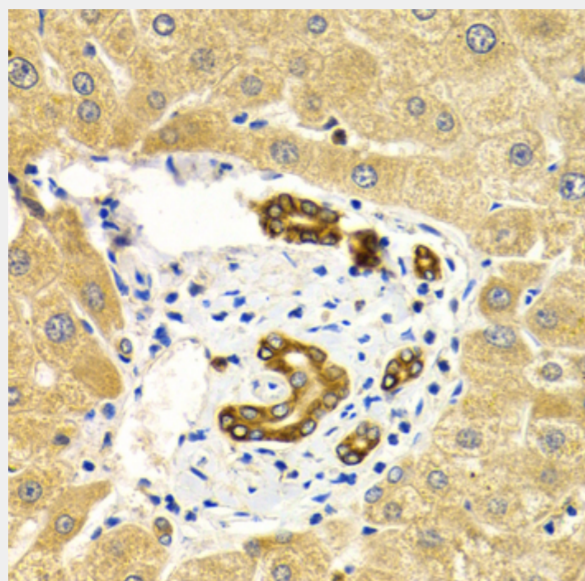
Secondary antibody: HRP Goat Anti-Rabbit IgG (H+L) at 1:10000 dilution.

Lysates/proteins: 25ug per lane.

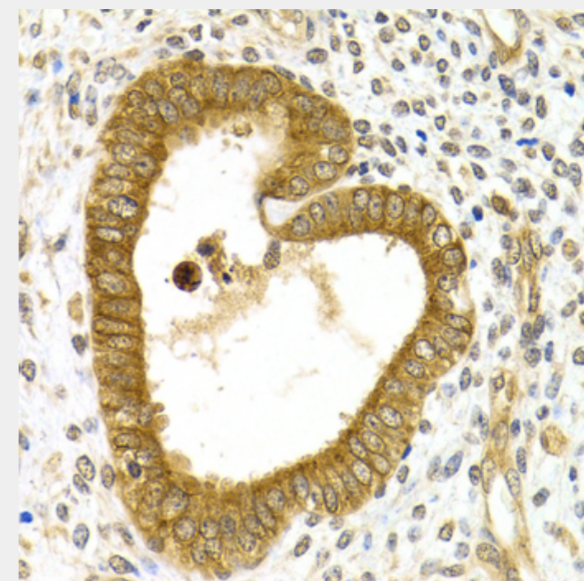
Blocking buffer: 3% nonfat dry milk in TBST.

Detection: ECL Basic Kit.

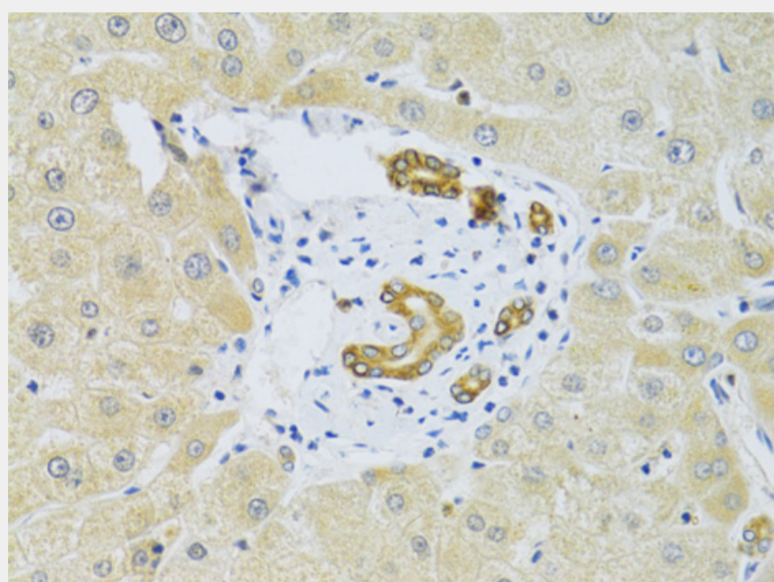
Exposure time: 90s.



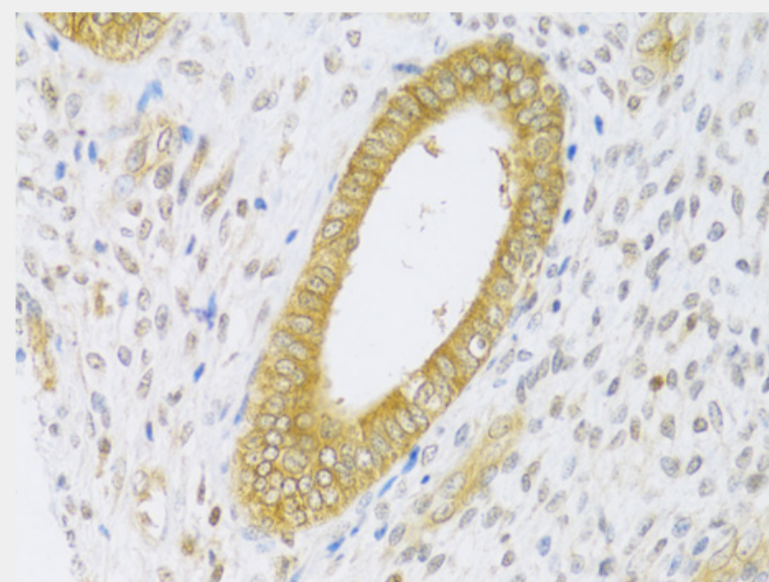
Immunohistochemistry of paraffin-embedded human liver injury using RAB27A Antibody at dilution of 1:200 (40x lens).



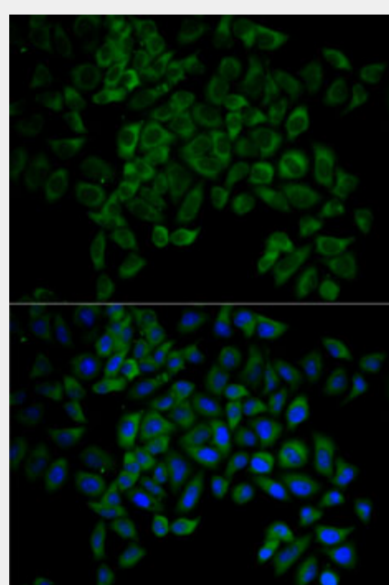
Immunohistochemistry of paraffin-embedded human adenomyosis using RAB27A Antibody at dilution of 1:200 (40x lens).



Immunohistochemistry of paraffin-embedded human liver injury using RAB27A Antibody at dilution of 1:100 (40x lens).



Immunohistochemistry of paraffin-embedded human adenomyosis using RAB27A Antibody at dilution of 1:100 (40x lens).



Immunofluorescence analysis of MCF7 cells using RAB27A antibody. Blue: DAPI for nuclear staining.

All products are for RESEARCH USE ONLY. Not for diagnostic & therapeutic purposes!