

DKC1 Polyclonal Antibody

Catalog No: tcba7021



Available Sizes

Size: 50ul

Size: 100ul

Size: 200ul



Specifications

Application:

WB,IHC,IF

Research Area:

RNA Binding Protein(RBP),

Species Reactivity:

Human,Mouse,Rat

Host Species:

Rabbit

Isotype:

IgG

Form:

Liquid

Storage Buffer:

Buffer: PBS with 0.02% sodium azide, 50% glycerol, pH7.3.

Recommended Dilution:

WB 1:500 - 1:2000

IHC 1:50 - 1:200

IF 1:50 - 1:200

Storage Instruction:

Store at -20°C. Avoid freeze / thaw cycles.

Alternative Names:

CBF5;DKC;DKCX;NAP57;NOLA4;XAP101

SwissProt:

O60832

Gene ID:

1736 (human);

Calculated Molecular Weight:

47kDa/57kDa

Purification:

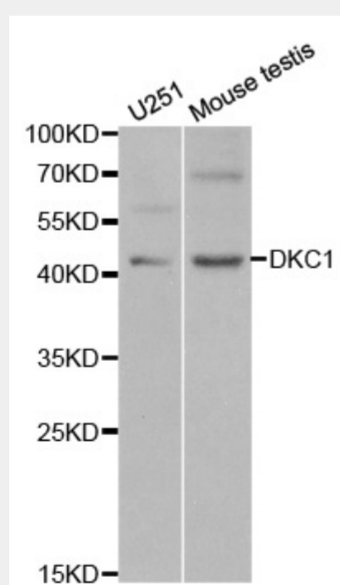
Affinity purification

Cellular Location:

Cajal body,Cytoplasm,Nucleus,nucleolus,

Product Description

This gene functions in two distinct complexes. It plays an active role in telomerase stabilization and maintenance, as well as recognition of snoRNAs containing H/ACA sequences which provides stability during biogenesis and assembly into H/ACA small nucleolar RNA ribonucleoproteins (snoRNPs). This gene is highly conserved and widely expressed, and may play additional roles in nucleo-cytoplasmic shuttling, DNA damage response, and cell adhesion. Mutations have been associated with X-linked dyskeratosis congenita. Alternative splicing results in multiple transcript variants.

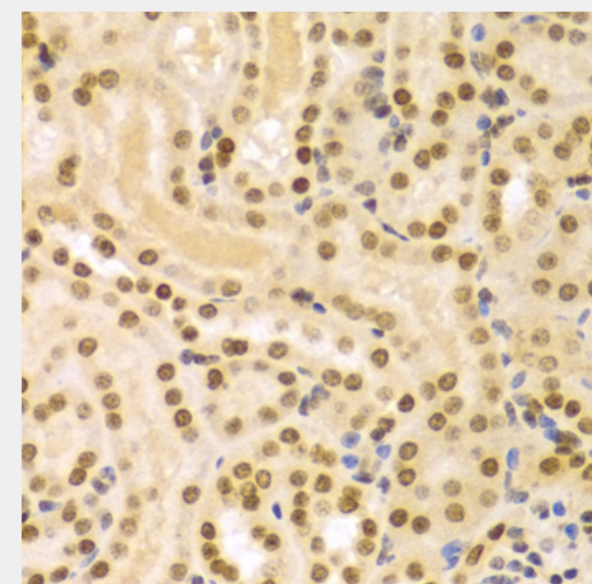


Western blot analysis of extracts of various cell lines, using DKC1 antibody at 1:1000 dilution.

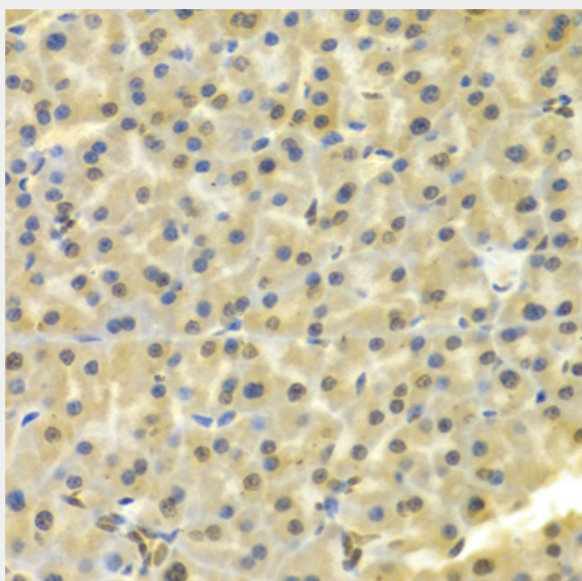
Secondary antibody: HRP Goat Anti-Rabbit IgG (H+L) at 1:10000 dilution.

Lysates/proteins: 25ug per lane.

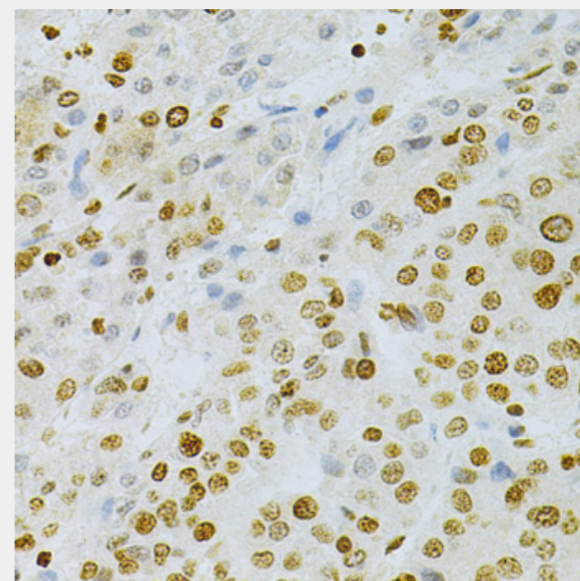
Blocking buffer: 3% nonfat dry milk in TBST.



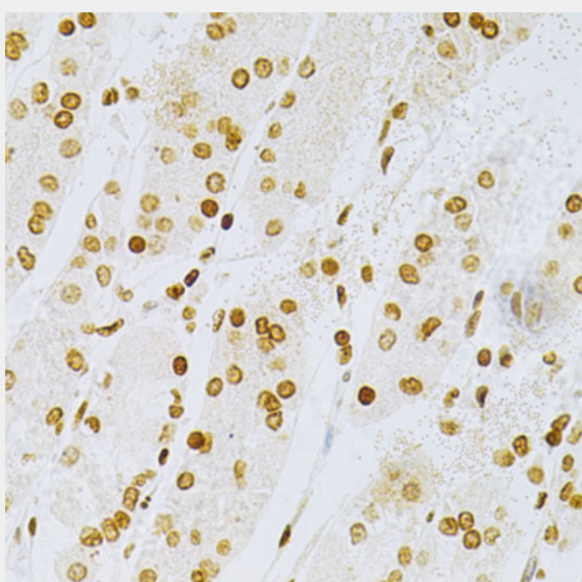
Immunohistochemistry of paraffin-embedded mouse kidney using DKC1 Antibody at dilution of 1:100 (40x lens).



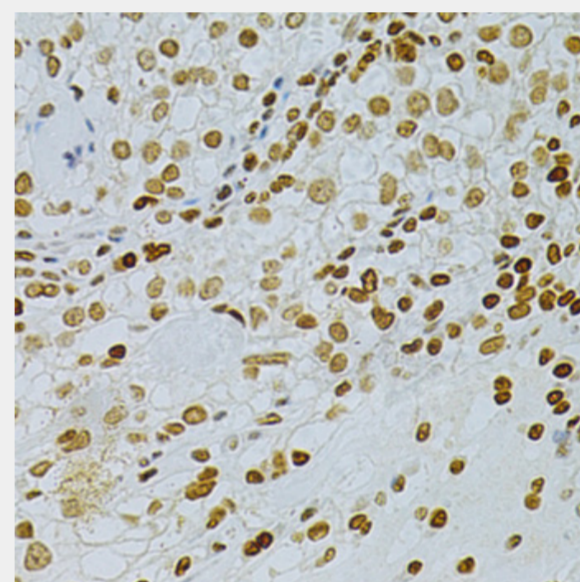
Immunohistochemistry of paraffin-embedded mouse pancreas using DKC1 Antibody at dilution of 1:100 (40x lens).



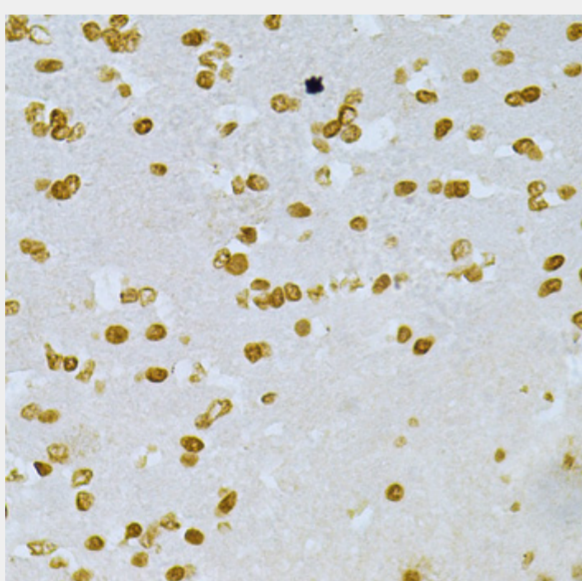
Immunohistochemistry of paraffin-embedded human liver cancer using DKC1 Antibody at dilution of 1:200 (40x lens).



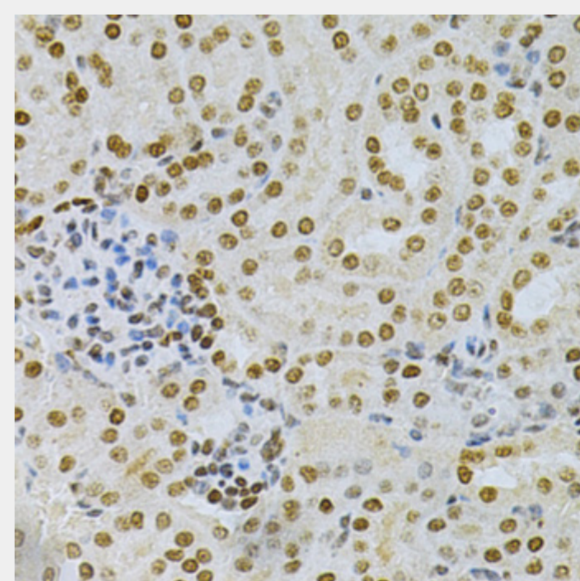
Immunohistochemistry of paraffin-embedded human stomach using DKC1 Antibody at dilution of 1:200 (40x lens).



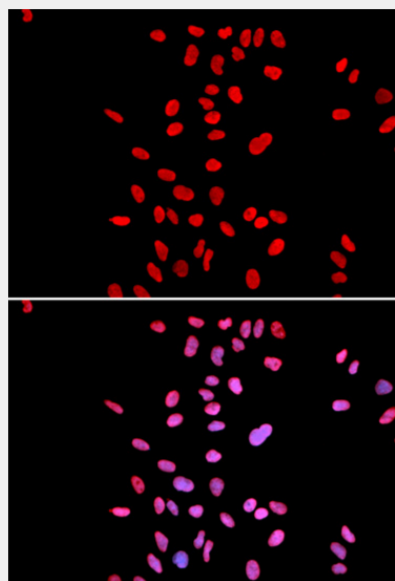
Immunohistochemistry of paraffin-embedded human cancer using DKC1 Antibody at dilution of 1:200 (40x lens).



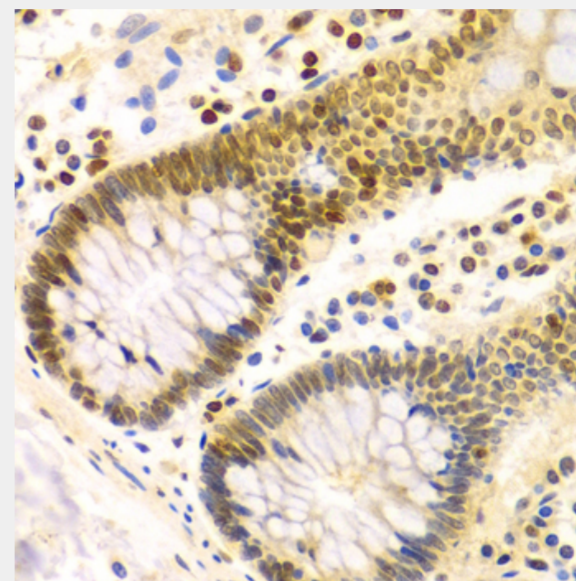
Immunohistochemistry of paraffin-embedded mouse brain using DKC1 Antibody at dilution of 1:200 (40x lens).



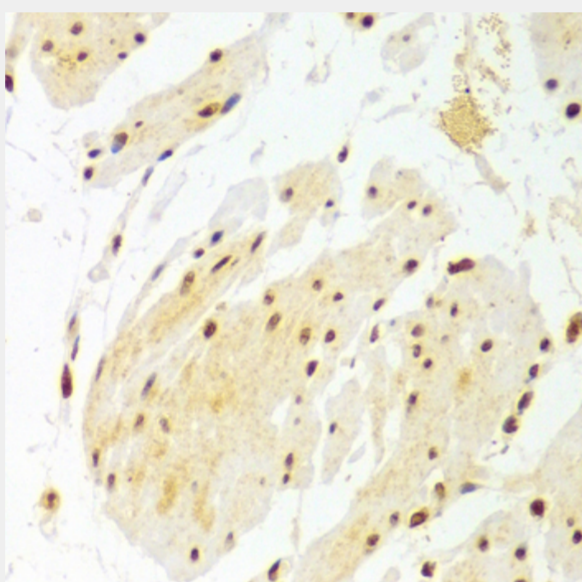
Immunohistochemistry of paraffin-embedded mouse kidney using DKC1 Antibody at dilution of 1:200 (40x lens).



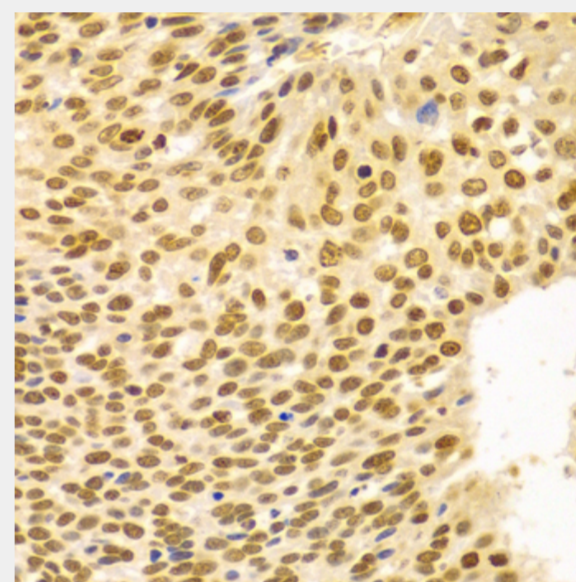
Immunofluorescence analysis of U2OS cells using DKC1 antibody. Blue: DAPI for nuclear staining.



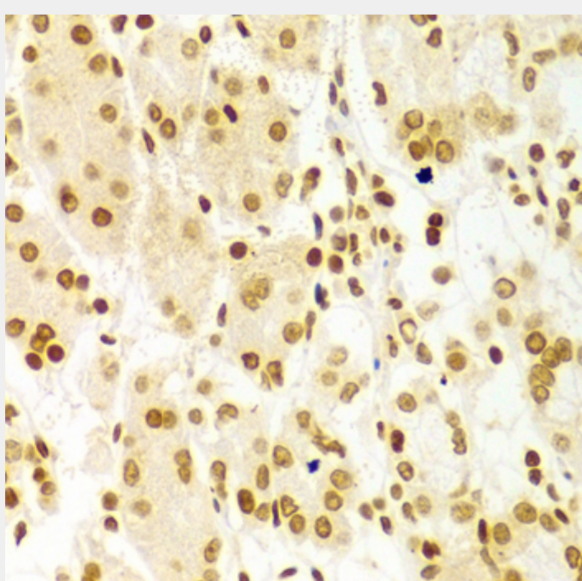
Immunohistochemistry of paraffin-embedded human colon using DKC1 Antibody at dilution of 1:100 (40x lens).



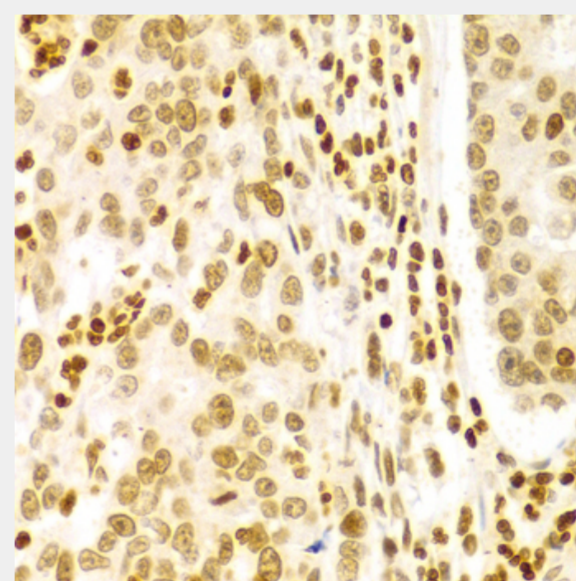
Immunohistochemistry of paraffin-embedded human esophagus using DKC1 Antibody at dilution of 1:100 (40x lens).



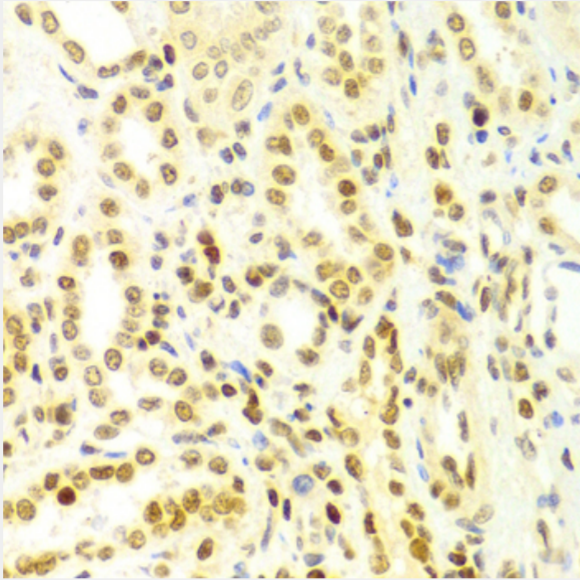
Immunohistochemistry of paraffin-embedded human esophageal cancer using DKC1 Antibody at dilution of 1:100 (40x lens).



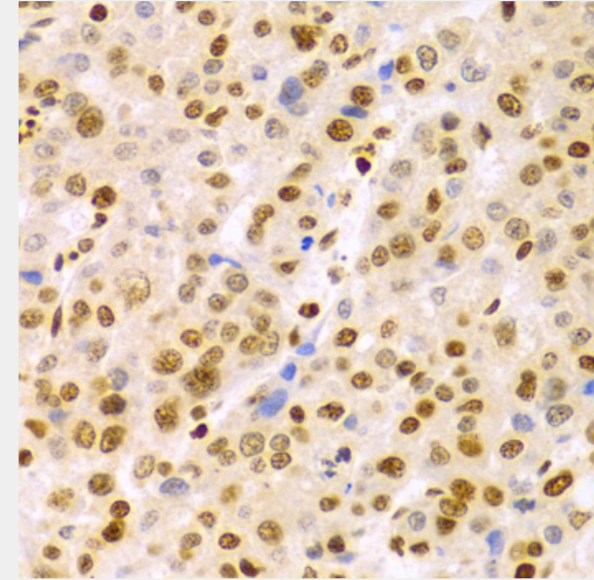
Immunohistochemistry of paraffin-embedded human stomach using DKC1 Antibody at dilution of 1:100 (40x lens).



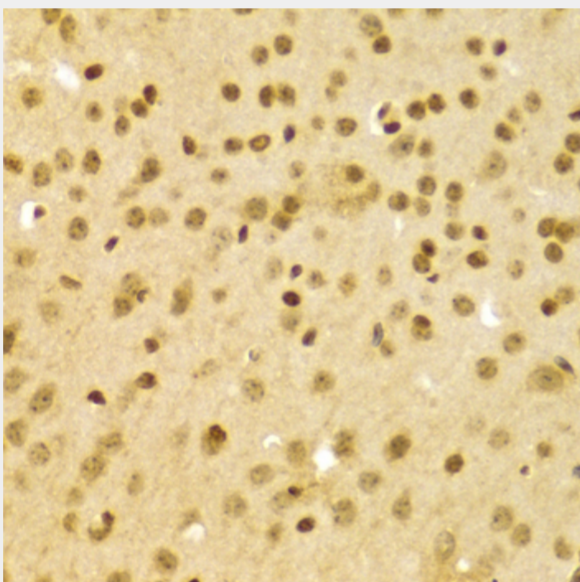
Immunohistochemistry of paraffin-embedded human gastric cancer using DKC1 Antibody at dilution of 1:100 (40x lens).



Immunohistochemistry of paraffin-embedded human kidney using DKC1 Antibody at dilution of 1:100 (40x lens).



Immunohistochemistry of paraffin-embedded human liver cancer using DKC1 Antibody at dilution of 1:100 (40x lens).



Immunohistochemistry of paraffin-embedded mouse brain using DKC1 Antibody at dilution of 1:100 (40x lens).

All products are for RESEARCH USE ONLY. Not for diagnostic & therapeutic purposes!