

# CSNK1E Polyclonal Antibody

Catalog No: tcba6959

**KO** VALIDATED



## Available Sizes

Size: 50ul

Size: 100ul

Size: 200ul



## Specifications

### Application:

WB,IHC,IF,IP

### Research Area:

Cancer,Stem cells,Wnt pathway,Developmental Biology,

### Species Reactivity:

Human,Mouse,Rat

### Host Species:

Rabbit

### Isotype:

IgG

### Form:

Liquid

### Storage Buffer:

Buffer: PBS with 0.02% sodium azide, 50% glycerol, pH7.3.

### Recommended Dilution:

WB 1:500 - 1:2000

IHC 1:50 - 1:200

IF 1:50 - 1:200

IP 1:50 - 1:100

**Storage Instruction:**

Store at -20°C. Avoid freeze / thaw cycles.

---

**Alternative Names:**

CKIepsilon;HCKIE

---

**SwissProt:**

P49674

---

**Gene ID:**

1454 (human);

---

**Calculated Molecular Weight:**

47kDa

---

**Purification:**

Affinity purification

---

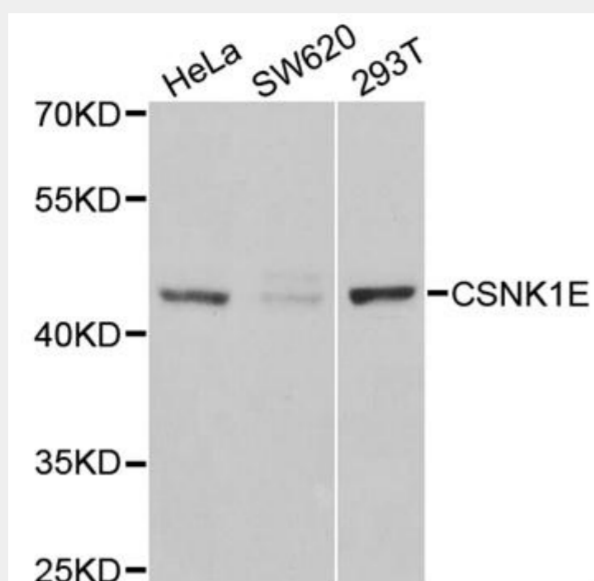
**Cellular Location:**

Cytoplasm,Nucleus,

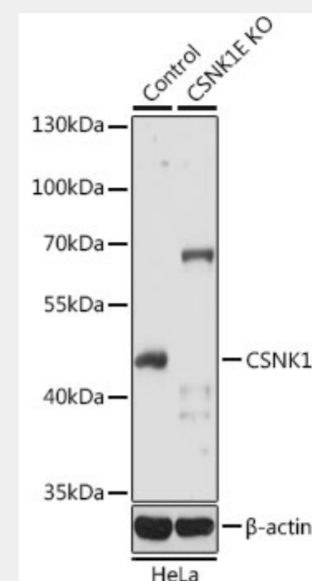
---

**Product Description**

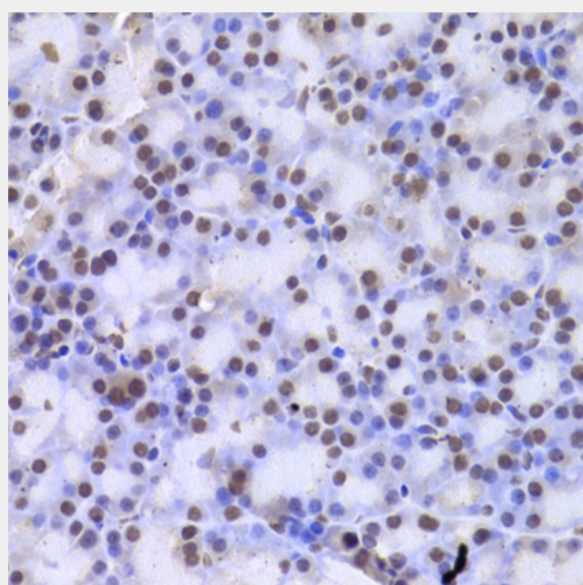
The protein encoded by this gene is a serine/threonine protein kinase and a member of the casein kinase I protein family, whose members have been implicated in the control of cytoplasmic and nuclear processes, including DNA replication and repair. The encoded protein is found in the cytoplasm as a monomer and can phosphorylate a variety of proteins, including itself. This protein has been shown to phosphorylate period, a circadian rhythm protein. Two transcript variants encoding the same protein have been found for this gene.



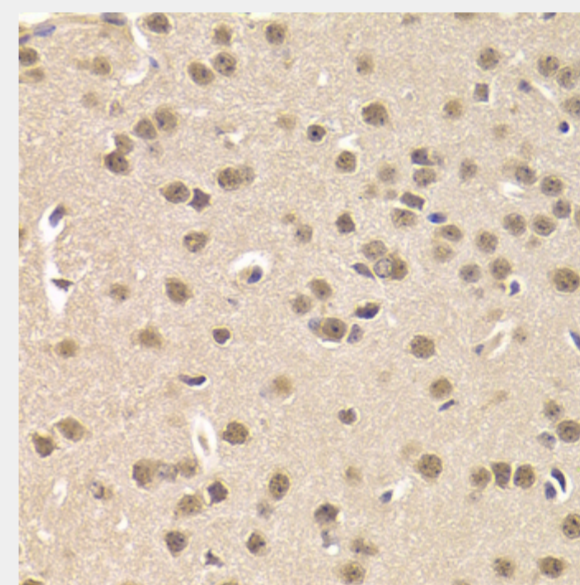
Western blot analysis of extracts of various cell lines, using CSNK1E antibody at 1:1000 dilution.  
Secondary antibody: HRP Goat Anti-Rabbit IgG (H+L) at 1:10000 dilution.  
Lysates/proteins: 25ug per lane.  
Blocking buffer: 3% nonfat dry milk in TBST.  
Detection: ECL Basic Kit.  
Exposure time: 90s.



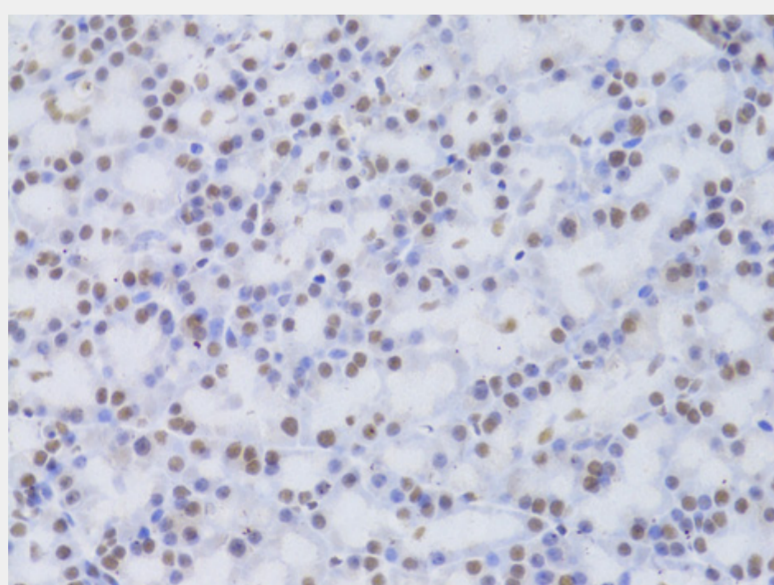
Western blot analysis of extracts from normal (control) and CSNK1E knockout (KO) HeLa cells, using CSNK1E antibody at 1:1000 dilution.  
Secondary antibody: HRP Goat Anti-Rabbit IgG (H+L) at 1:10000 dilution.  
Lysates/proteins: 25ug per lane.  
Blocking buffer: 3% nonfat dry milk in TBST.  
Detection: ECL Basic Kit.  
Exposure time: 5s.



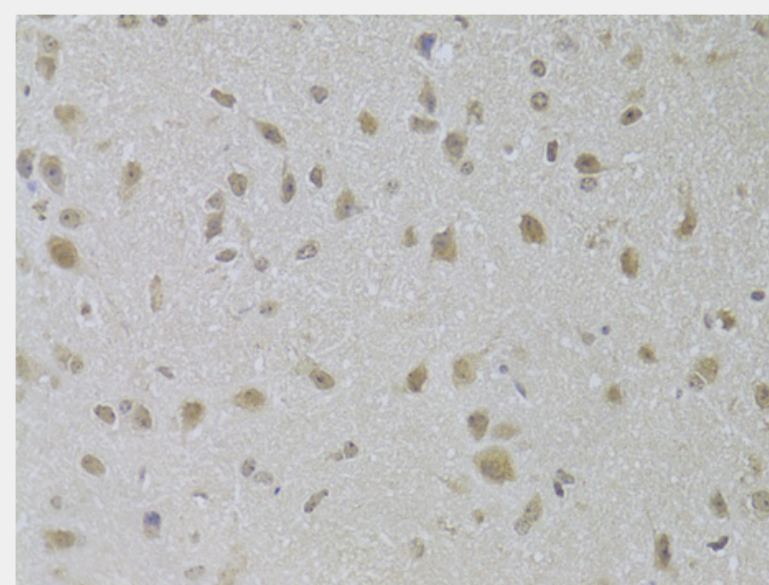
Immunohistochemistry of paraffin-embedded rat pancreas using CSNK1E Antibody at dilution of 1:200 (40x lens).



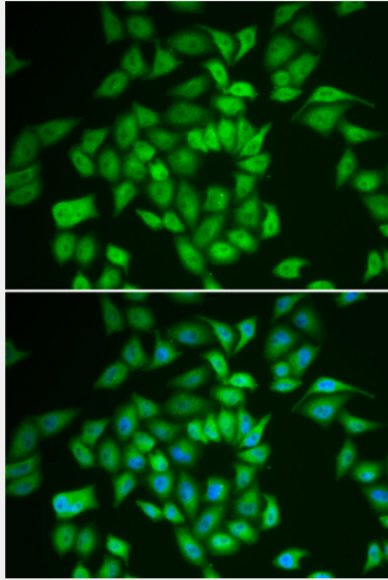
Immunohistochemistry of paraffin-embedded mouse brain using CSNK1E Antibody at dilution of 1:200 (40x lens).



Immunohistochemistry of paraffin-embedded rat pancreas using CSNK1E Antibody at dilution of 1:100 (40x lens).



Immunohistochemistry of paraffin-embedded mouse brain using CSNK1E Antibody at dilution of 1:100 (40x lens).



Immunofluorescence analysis of HeLa cells using CSNK1E antibody. Blue: DAPI for nuclear staining.

All products are for RESEARCH USE ONLY. Not for diagnostic & therapeutic purposes!