

TFF1 Polyclonal Antibody

Catalog No: tcba6953



Available Sizes

Size: 50ul

Size: 100ul

Size: 200ul



Specifications

Application:

WB,IHC

Species Reactivity:

Human,Mouse,Rat

Host Species:

Rabbit

Isotype:

IgG

Form:

Liquid

Storage Buffer:

Buffer: PBS with 0.02% sodium azide, 50% glycerol, pH7.3.

Recommended Dilution:

WB 1:500 - 1:1000

IHC 1:50 - 1:200

Storage Instruction:

Store at -20°C. Avoid freeze / thaw cycles.

Alternative Names:

BCEI;D21S21;HP1.A;HPS2;pNR-2;pS2

SwissProt:

P04155

Gene ID:

7031 (human);

Calculated Molecular Weight:

9kDa

Purification:

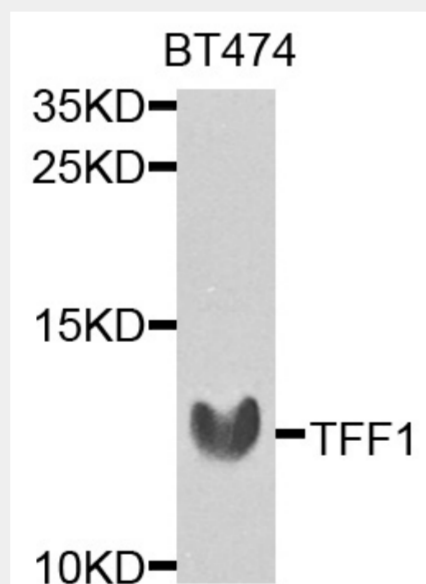
Affinity purification

Cellular Location:

Secreted,

Product Description

Members of the trefoil family are characterized by having at least one copy of the trefoil motif, a 40-amino acid domain that contains three conserved disulfides. They are stable secretory proteins expressed in gastrointestinal mucosa. Their functions are not defined, but they may protect the mucosa from insults, stabilize the mucus layer, and affect healing of the epithelium. This gene, which is expressed in the gastric mucosa, has also been studied because of its expression in human tumors. This gene and two other related trefoil family member genes are found in a cluster on chromosome 21.



Western blot analysis of extracts of BT-474 cells, using TFF1 antibody at 1:1000 dilution.

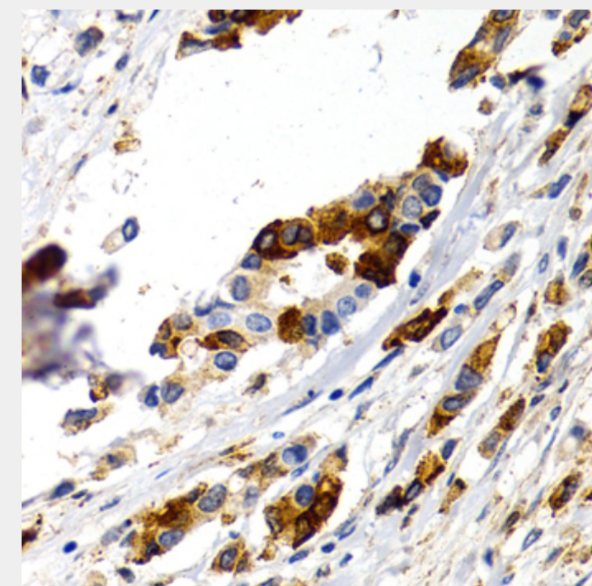
Secondary antibody: HRP Goat Anti-Rabbit IgG (H+L) at 1:10000 dilution.

Lysates/proteins: 25ug per lane.

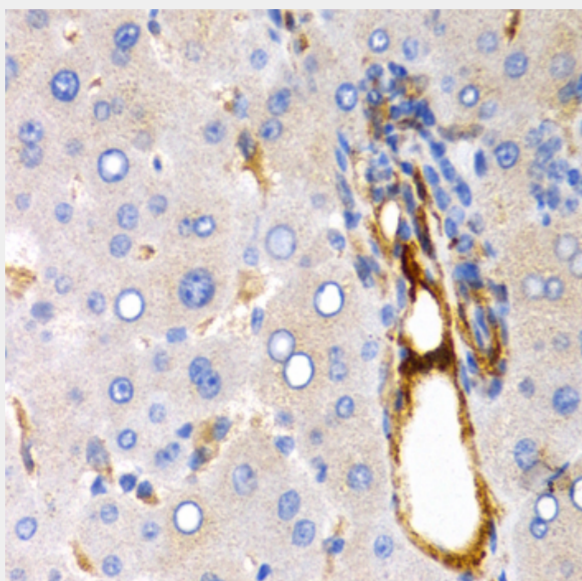
Blocking buffer: 3% nonfat dry milk in TBST.

Detection: ECL Enhanced Kit.

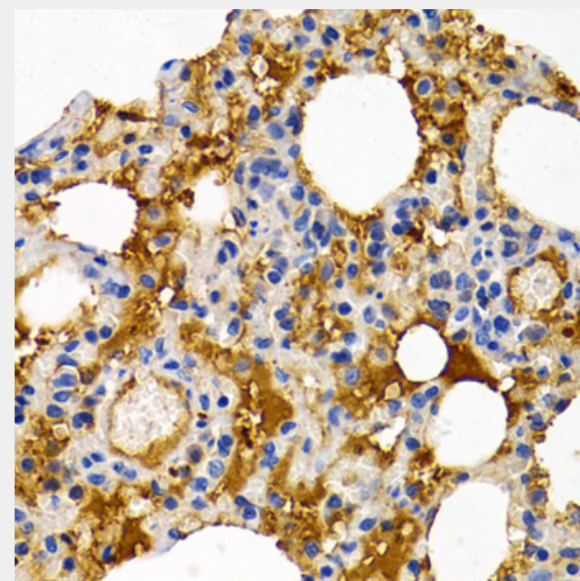
Exposure time: 90s.



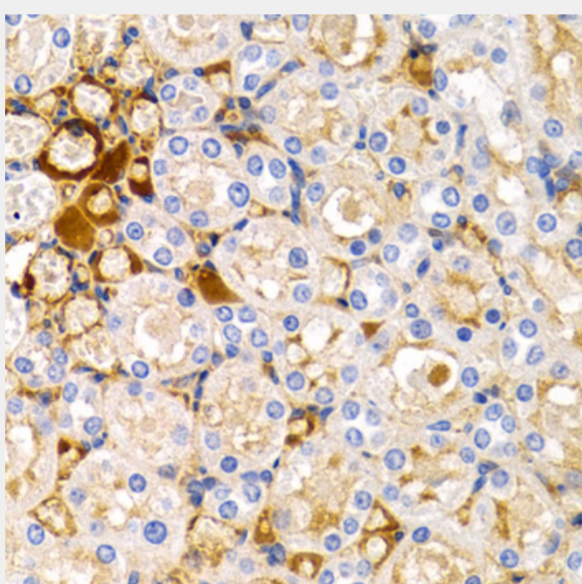
Immunohistochemistry of paraffin-embedded human mammary cancer using TFF1 antibody at dilution of 1:200 (40x lens).



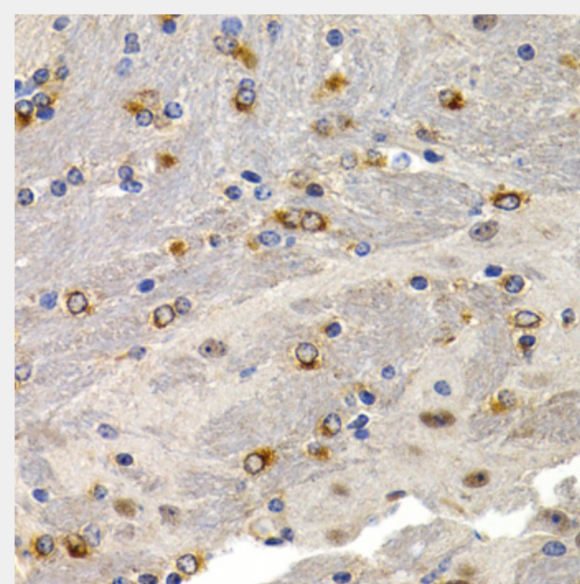
Immunohistochemistry of paraffin-embedded human liver cancer using TFF1 antibody at dilution of 1:200 (40x lens).



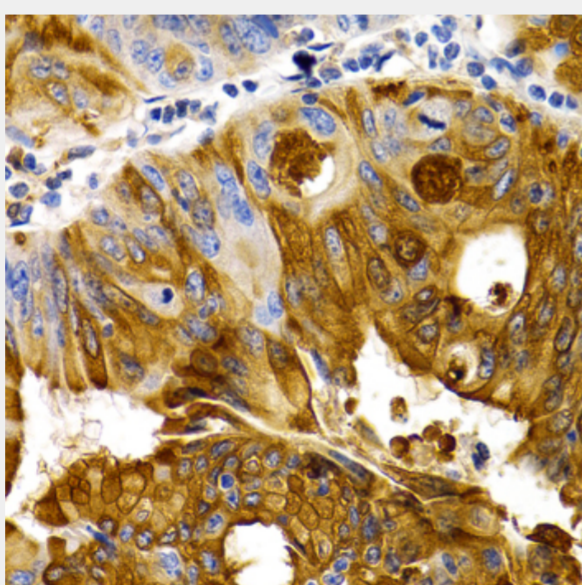
Immunohistochemistry of paraffin-embedded rat lung using TFF1 antibody at dilution of 1:200 (40x lens).



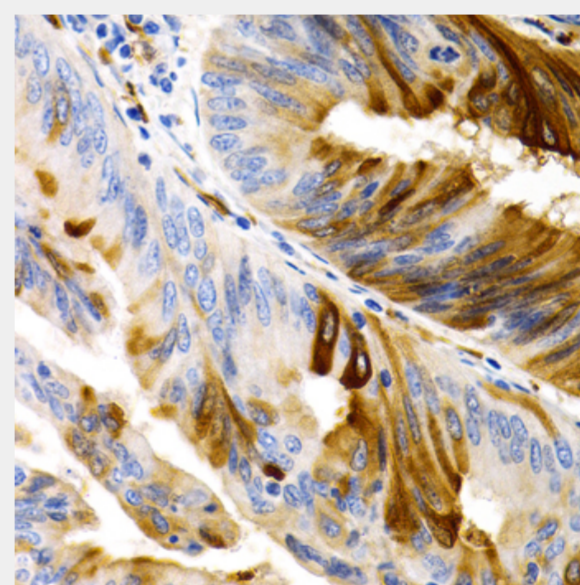
Immunohistochemistry of paraffin-embedded rat kidney using TFF1 antibody at dilution of 1:200 (40x lens).



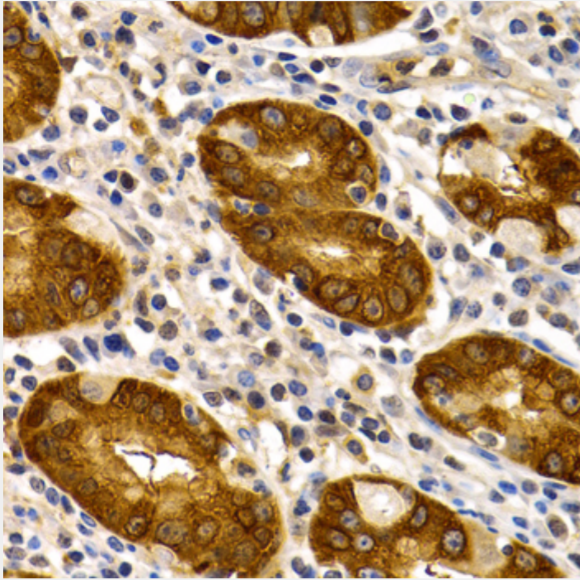
Immunohistochemistry of paraffin-embedded mouse brain using TFF1 antibody at dilution of 1:200 (40x lens).



Immunohistochemistry of paraffin-embedded human colon carcinoma using TFF1 antibody at dilution of 1:200 (40x lens).



Immunohistochemistry of paraffin-embedded human colon carcinoma using TFF1 antibody at dilution of 1:200 (40x lens).



Immunohistochemistry of paraffin-embedded human stomach using TFF1 antibody at dilution of 1:200 (40x lens).

All products are for RESEARCH USE ONLY. Not for diagnostic & therapeutic purposes!