

CDK7 Polyclonal Antibody

Catalog No: tcba6871



Available Sizes

Size: 50ul

Size: 100ul

Size: 200ul



Specifications

Application:

WB,IHC,IF

Research Area:

Cancer,Cell cycle,Cell Biology,DNA Damage/Repair,Cell Cycle,

Species Reactivity:

Human,Mouse

Host Species:

Rabbit

Isotype:

IgG

Form:

Liquid

Storage Buffer:

Buffer: PBS with 0.02% sodium azide, 50% glycerol, pH7.3.

Recommended Dilution:

WB 1:500 - 1:2000

IHC 1:50 - 1:200

IF 1:50 - 1:200

Storage Instruction:

Store at -20°C. Avoid freeze / thaw cycles.

Alternative Names:

CAK;CAK1;CDKN7;HCAK;MO15;p39MO15;STK1

SwissProt:

P50613

Gene ID:

1022 (human);

Calculated Molecular Weight:

39kDa

Purification:

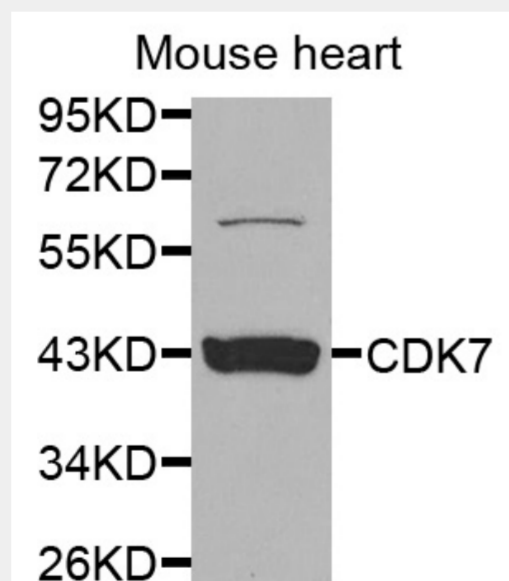
Affinity purification

Cellular Location:

Cytoplasm,Nucleus,perinuclear region,

Product Description

The protein encoded by this gene is a member of the cyclin-dependent protein kinase (CDK) family. CDK family members are highly similar to the gene products of *Saccharomyces cerevisiae* cdc28, and *Schizosaccharomyces pombe* cdc2, and are known to be important regulators of cell cycle progression. This protein forms a trimeric complex with cyclin H and MAT1, which functions as a Cdk-activating kinase (CAK). It is an essential component of the transcription factor TFIIF, that is involved in transcription initiation and DNA repair. This protein is thought to serve as a direct link between the regulation of transcription and the cell cycle.

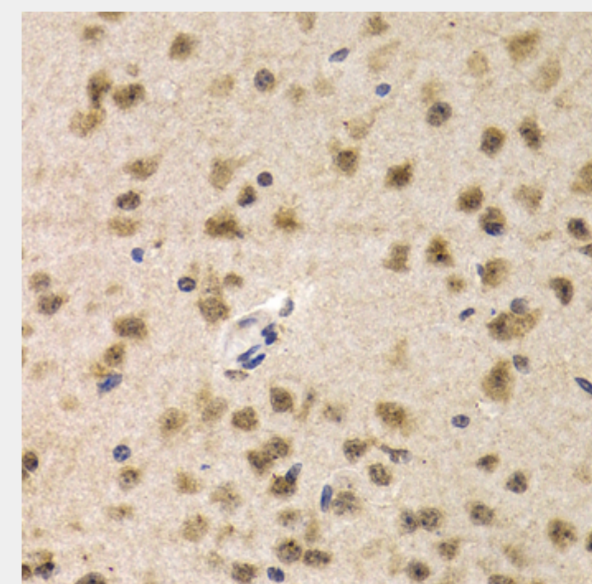


Western blot analysis of extracts of mouse heart, using CDK7 antibody at 1:1000 dilution.

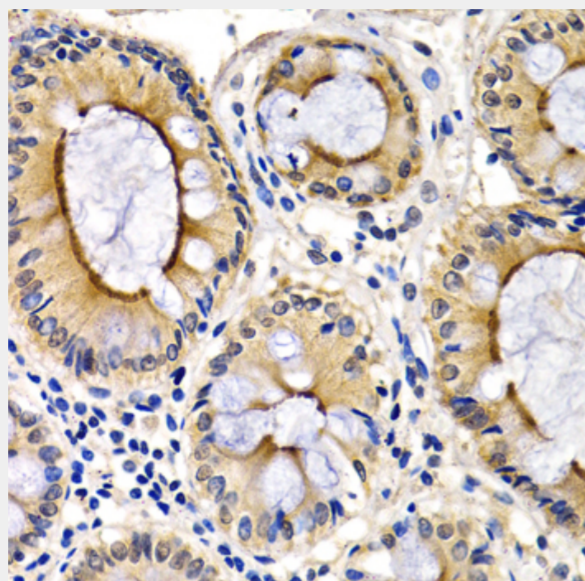
Secondary antibody: HRP Goat Anti-Rabbit IgG (H+L) at 1:10000 dilution.

Lysates/proteins: 25ug per lane.

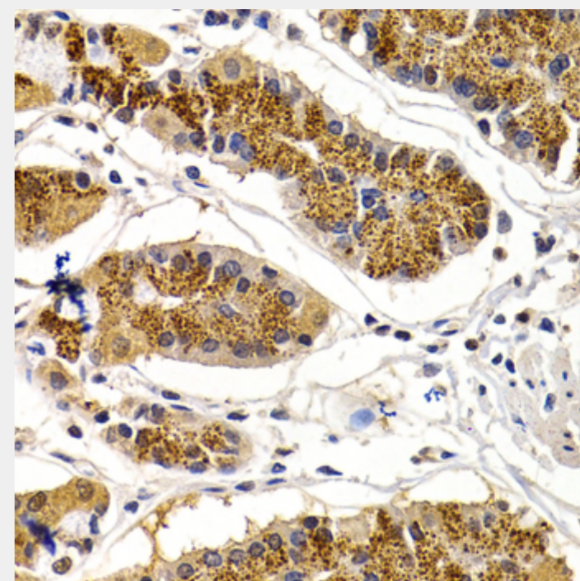
Blocking buffer: 3% nonfat dry milk in TBST.



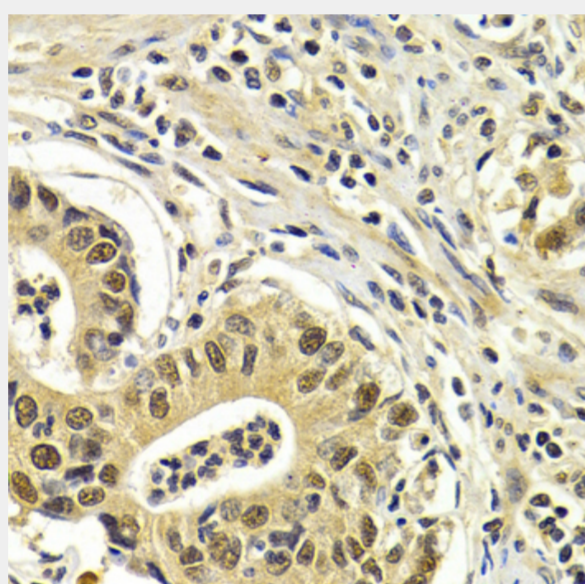
Immunohistochemistry of paraffin-embedded mouse brain using CDK7 antibody at dilution of 1:200 (40x lens).



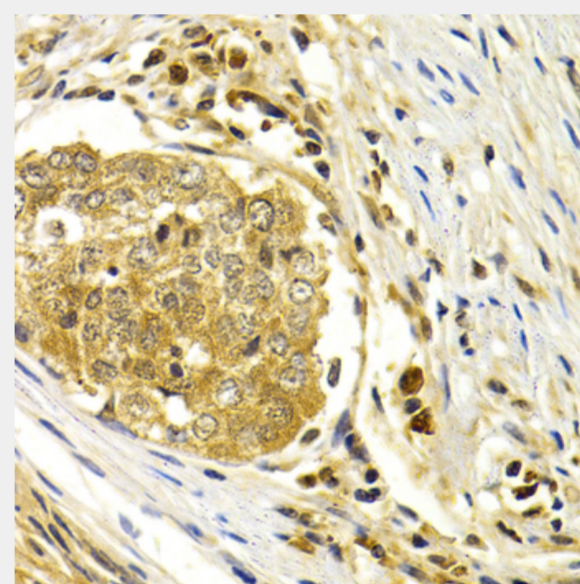
Immunohistochemistry of paraffin-embedded human colon using CDK7 antibody at dilution of 1:200 (40x lens).



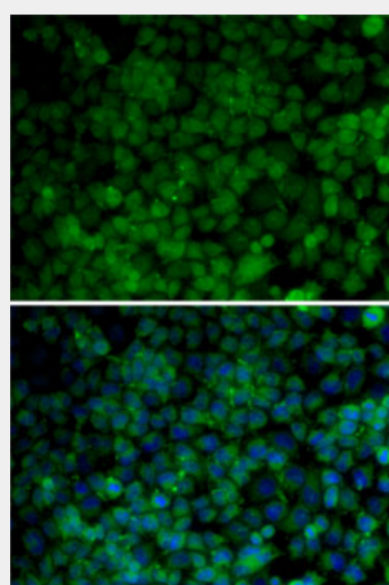
Immunohistochemistry of paraffin-embedded human stomach using CDK7 antibody at dilution of 1:200 (40x lens).



Immunohistochemistry of paraffin-embedded human gastric cancer using CDK7 antibody at dilution of 1:200 (40x lens).



Immunohistochemistry of paraffin-embedded human esophageal cancer using CDK7 antibody at dilution of 1:200 (40x lens).



Immunofluorescence analysis of HeLa cells using CDK7 antibody. Blue: DAPI for nuclear staining.

All products are for RESEARCH USE ONLY. Not for diagnostic & therapeutic purposes!