

OLR1 Polyclonal Antibody

Catalog No: tcba6580



Available Sizes

Size: 50ul

Size: 100ul

Size: 200ul



Specifications

Application:

WB,IHC

Research Area:

Cancer,Cardiovascular,Cell Biology,Metabolism,Lipid Metabolism pathway,

Species Reactivity:

Human,Mouse,Rat

Host Species:

Rabbit

Isotype:

IgG

Form:

Liquid

Storage Buffer:

Buffer: PBS with 0.02% sodium azide, 50% glycerol, pH7.3.

Recommended Dilution:

WB 1:500 - 1:2000

IHC 1:50 - 1:200

Storage Instruction:

Store at -20°C. Avoid freeze / thaw cycles.

Alternative Names:

CLEC8A;LOX1;LOXIN;SCARE1;SLOX1

SwissProt:

P78380

Gene ID:

4973 (human);

Calculated Molecular Weight:

20kDa/21kDa/30kDa

Purification:

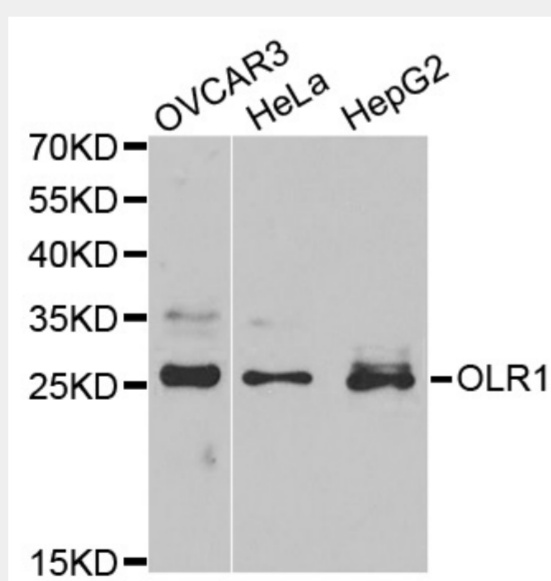
Affinity purification

Cellular Location:

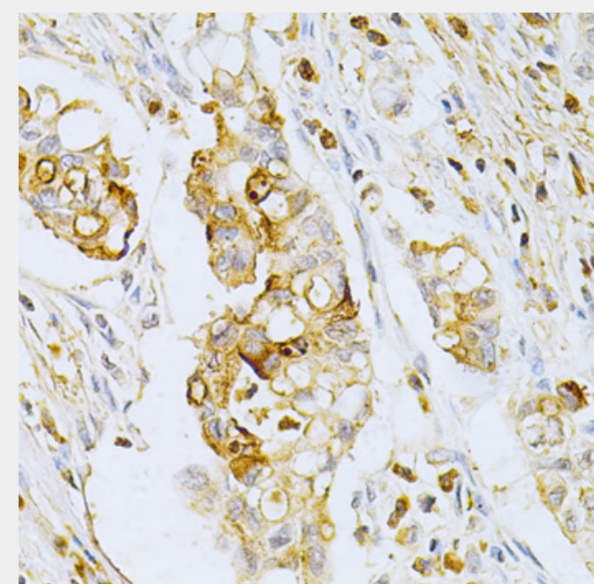
Cell membrane,Lipid-anchor,Membrane raft,Secreted,Single-pass type II membrane protein,

Product Description

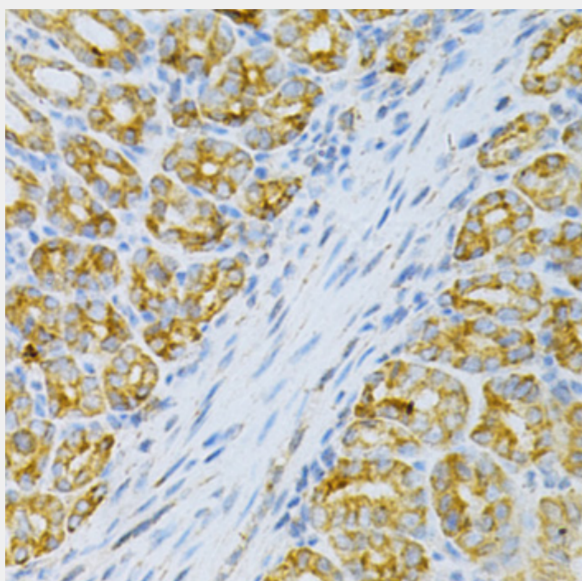
This gene encodes a low density lipoprotein receptor that belongs to the C-type lectin superfamily. This gene is regulated through the cyclic AMP signaling pathway. The encoded protein binds, internalizes and degrades oxidized low-density lipoprotein. This protein may be involved in the regulation of Fas-induced apoptosis. This protein may play a role as a scavenger receptor. Mutations of this gene have been associated with atherosclerosis, risk of myocardial infarction, and may modify the risk of Alzheimer's disease. Alternate splicing results in multiple transcript variants.



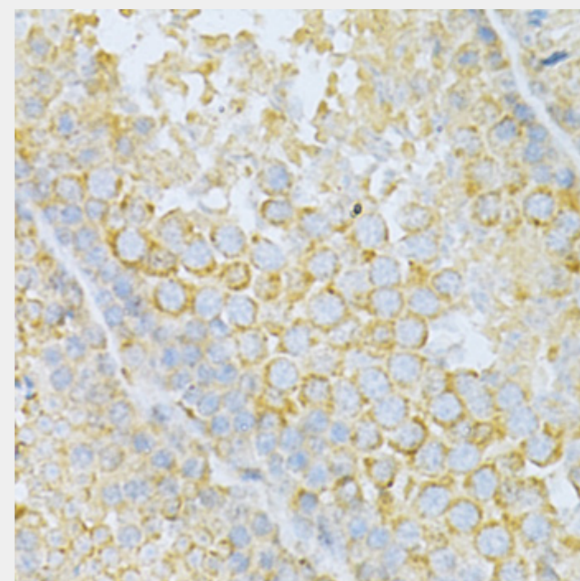
Western blot analysis of extracts of various cell lines, using OLR1 antibody at 1:1000 dilution.
Secondary antibody: HRP Goat Anti-Rabbit IgG (H+L) at 1:10000 dilution.
Lysates/proteins: 25ug per lane.
Blocking buffer: 3% nonfat dry milk in TBST.



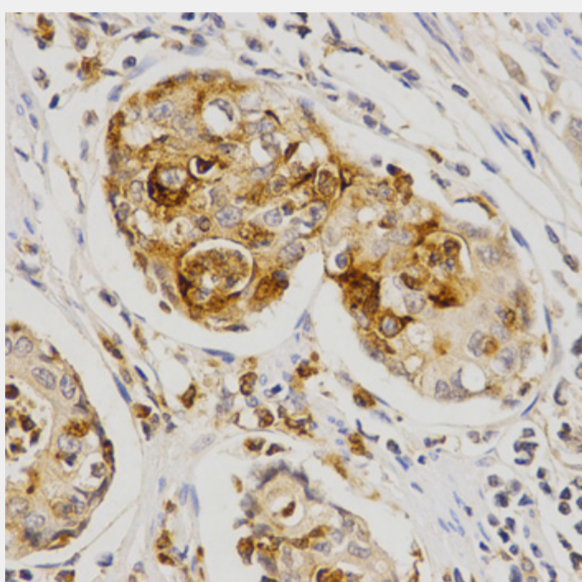
Immunohistochemistry of paraffin-embedded human gastric cancer using OLR1
Antibody at dilution of 1:200 (40x lens).



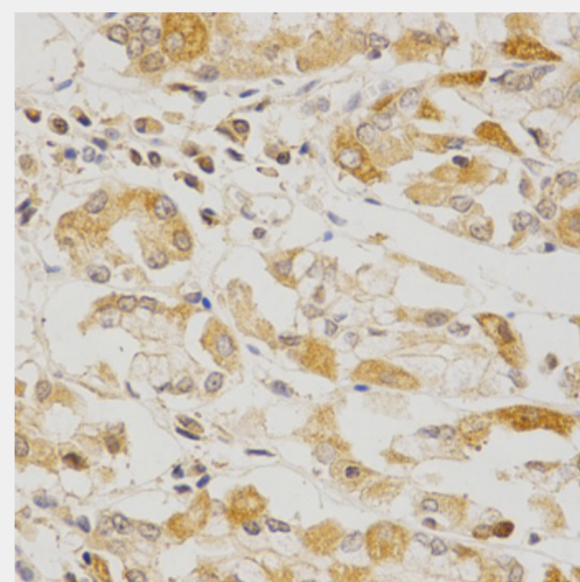
Immunohistochemistry of paraffin-embedded mouse intestine using OLR1 Antibody at dilution of 1:200 (40x lens).



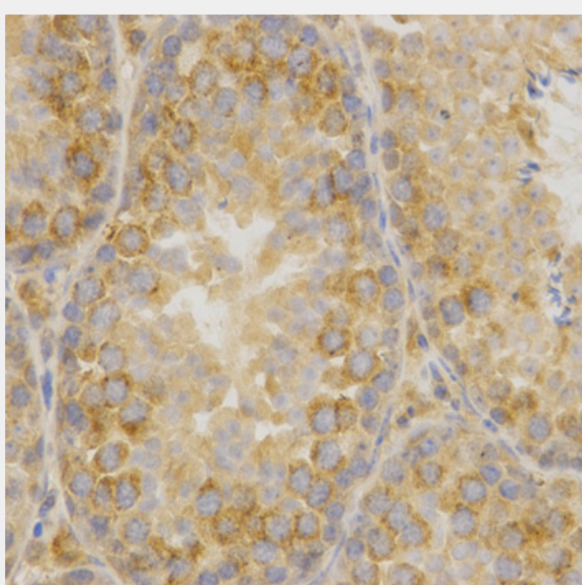
Immunohistochemistry of paraffin-embedded mouse testis using OLR1 Antibody at dilution of 1:200 (40x lens).



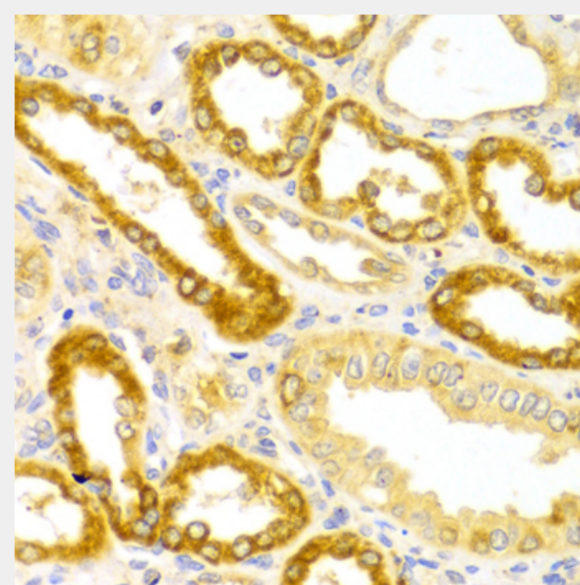
Immunohistochemistry of paraffin-embedded human gastric cancer using OLR1 Antibody at dilution of 1:200 (40x lens).



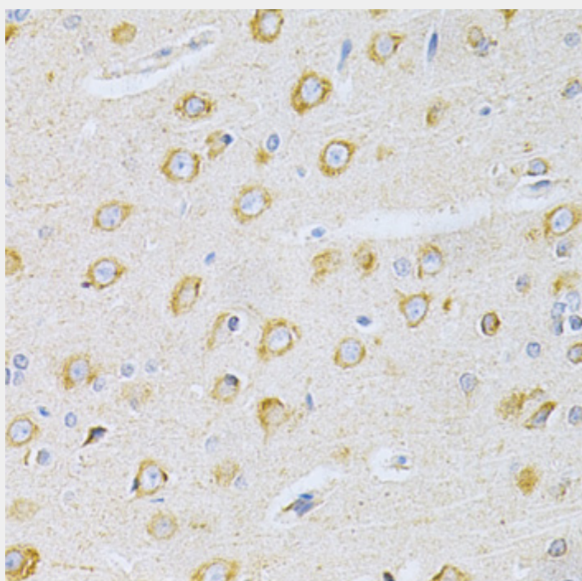
Immunohistochemistry of paraffin-embedded human stomach using OLR1 Antibody at dilution of 1:200 (40x lens).



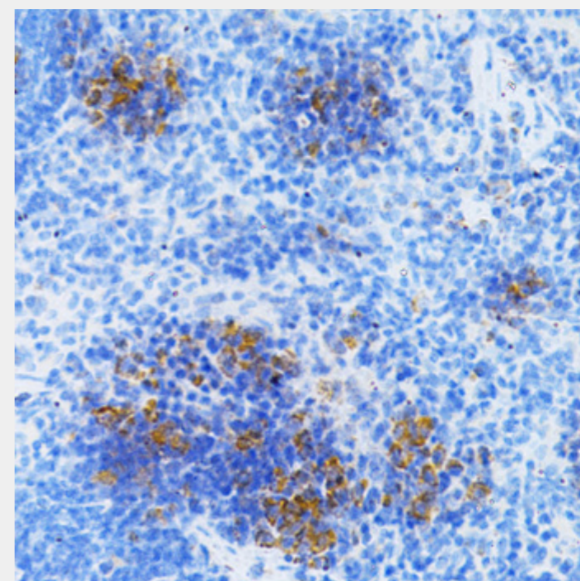
Immunohistochemistry of paraffin-embedded mouse testis using OLR1 Antibody at dilution of 1:200 (40x lens).



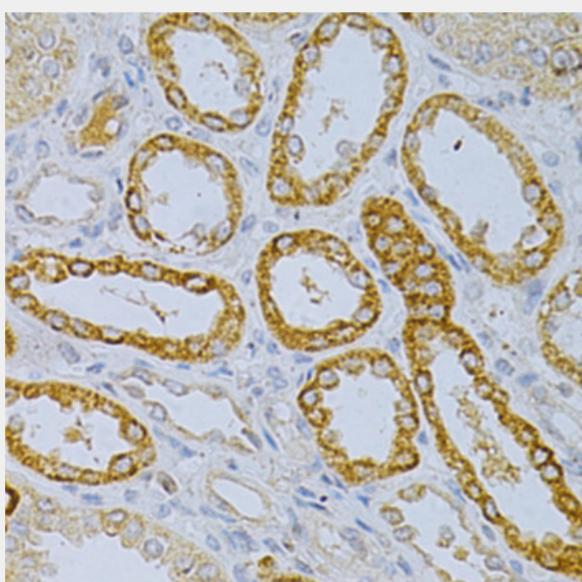
Immunohistochemistry of paraffin-embedded human kidney using OLR1 Antibody at dilution of 1:100 (40x lens).



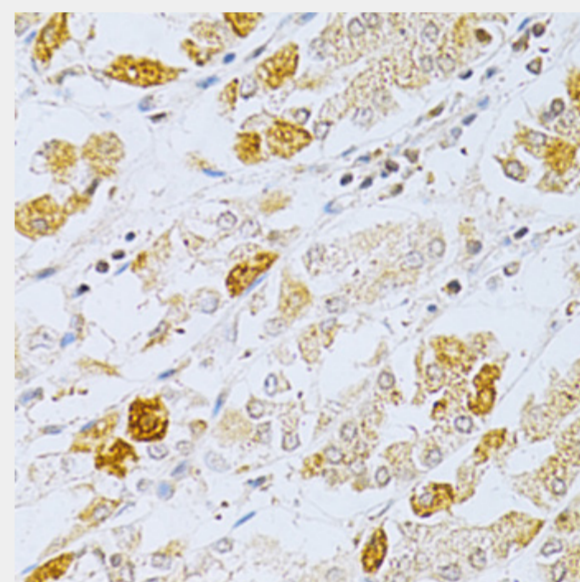
Immunohistochemistry of paraffin-embedded rat brain using OLR1 Antibody at dilution of 1:200 (40x lens).



Immunohistochemistry of paraffin-embedded rat spleen using OLR1 Antibody at dilution of 1:200 (40x lens).



Immunohistochemistry of paraffin-embedded human kidney using OLR1 Antibody at dilution of 1:200 (40x lens).



Immunohistochemistry of paraffin-embedded human stomach using OLR1 Antibody at dilution of 1:200 (40x lens).

All products are for RESEARCH USE ONLY. Not for diagnostic & therapeutic purposes!