

CDX2 Polyclonal Antibody

Catalog No: tcba6472



Available Sizes

Size: 50ul

Size: 100ul

Size: 200ul



Specifications

Application:

WB,IHC

Research Area:

Stem cells,Epigenetics,

Species Reactivity:

Human,Mouse,Rat

Host Species:

Rabbit

Isotype:

IgG

Form:

Liquid

Storage Buffer:

Buffer: PBS with 0.02% sodium azide, 50% glycerol, pH7.3.

Recommended Dilution:

WB 1:500 - 1:2000

IHC 1:50 - 1:200

Storage Instruction:

Store at -20°C. Avoid freeze / thaw cycles.

Alternative Names:

CDX-3;CDX2/AS;CDX3

SwissProt:

Q99626

Gene ID:

1045 (human);

Calculated Molecular Weight:

33kDa

Purification:

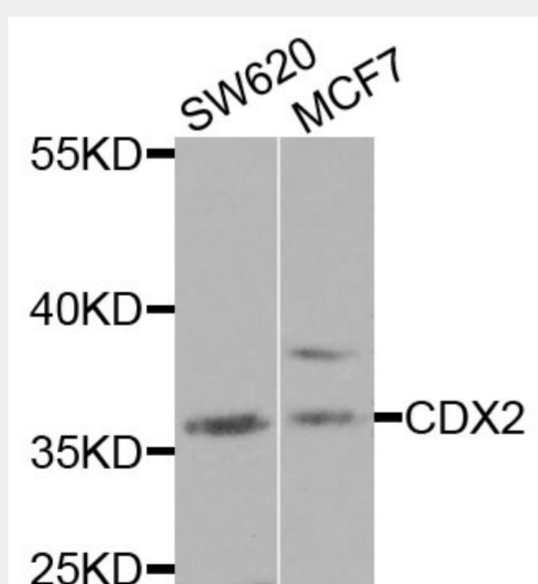
Affinity purification

Cellular Location:

Nucleus,

Product Description

This gene is a member of the caudal-related homeobox transcription factor gene family. The encoded protein is a major regulator of intestine-specific genes involved in cell growth and differentiation. This protein also plays a role in early embryonic development of the intestinal tract. Aberrant expression of this gene is associated with intestinal inflammation and tumorigenesis.

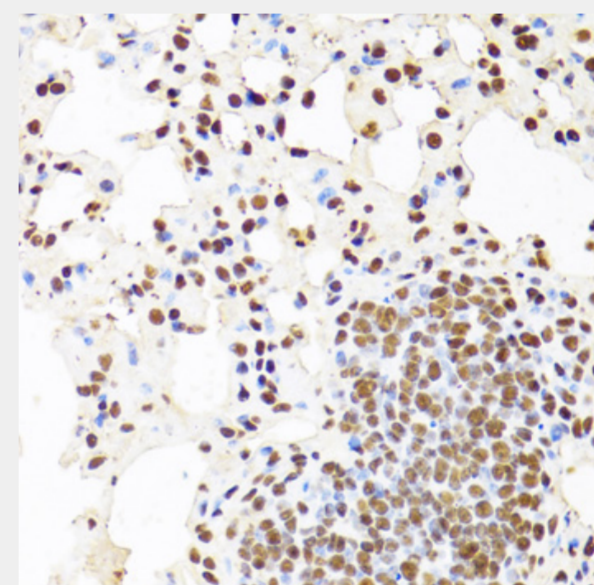


Western blot analysis of extracts of various cell lines, using CDX2 antibody at 1:1000 dilution.

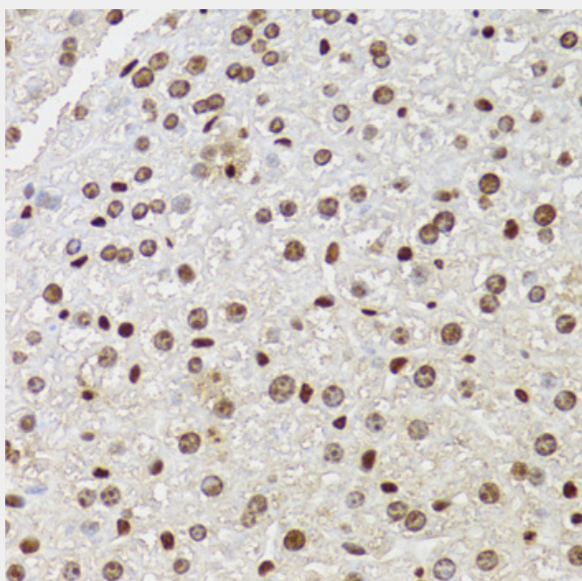
Secondary antibody: HRP Goat Anti-Rabbit IgG (H+L) at 1:10000 dilution.

Lysates/proteins: 25ug per lane.

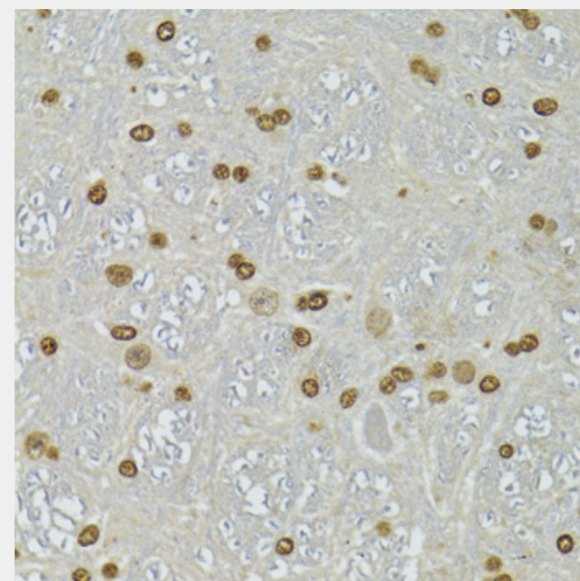
Blocking buffer: 3% nonfat dry milk in TBST.



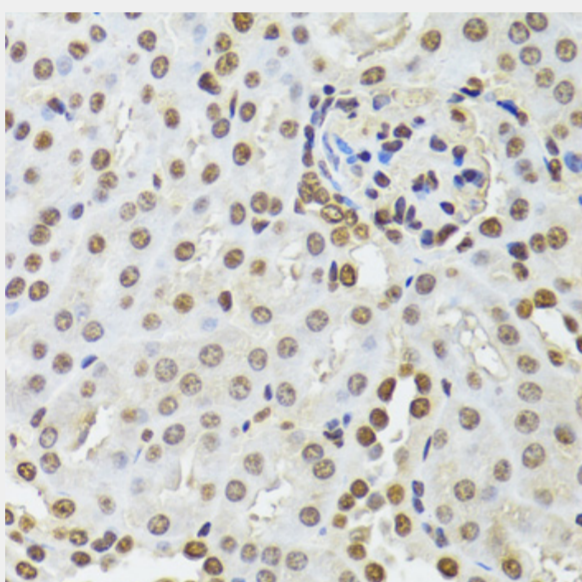
Immunohistochemistry of paraffin-embedded mouse lung using CDX2 antibody at dilution of 1:100 (40x lens).



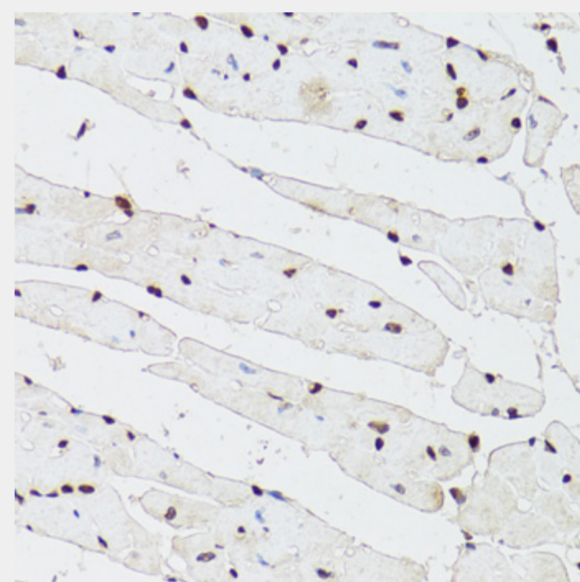
Immunohistochemistry of paraffin-embedded mouse liver using CDX2 antibody at dilution of 1:100 (40x lens).



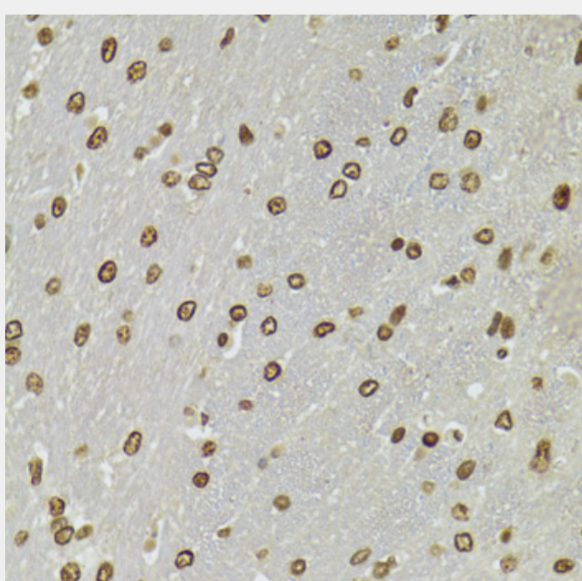
Immunohistochemistry of paraffin-embedded mouse brain using CDX2 antibody at dilution of 1:100 (40x lens).



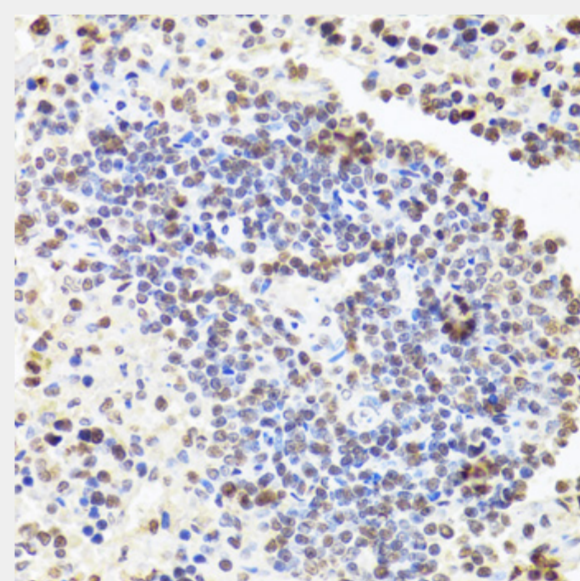
Immunohistochemistry of paraffin-embedded mouse kidney using CDX2 antibody at dilution of 1:100 (40x lens).



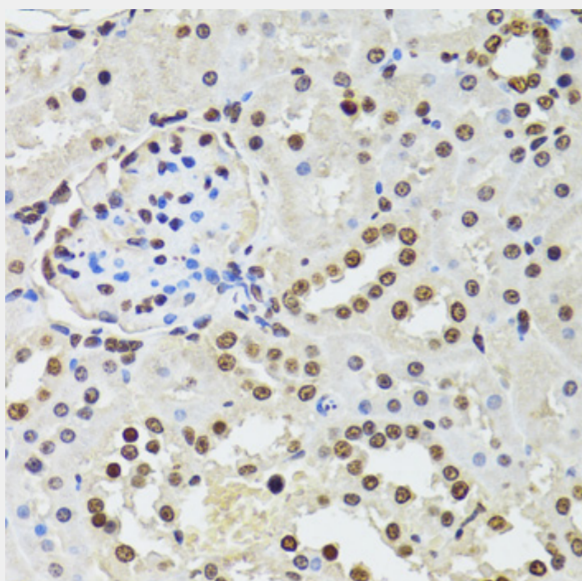
Immunohistochemistry of paraffin-embedded mouse heart using CDX2 antibody at dilution of 1:100 (40x lens).



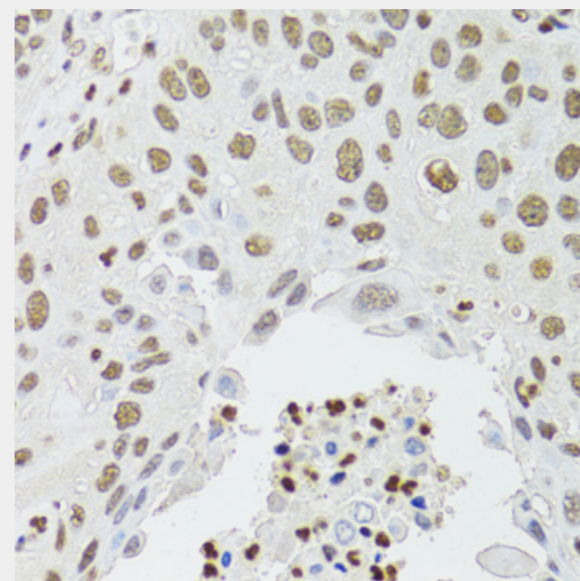
Immunohistochemistry of paraffin-embedded rat brain using CDX2 antibody at dilution of 1:100 (40x lens).



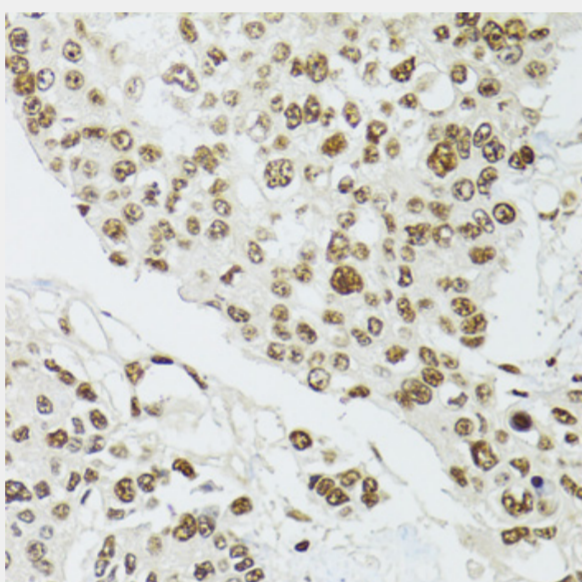
Immunohistochemistry of paraffin-embedded rat spleen using CDX2 antibody at dilution of 1:100 (40x lens).



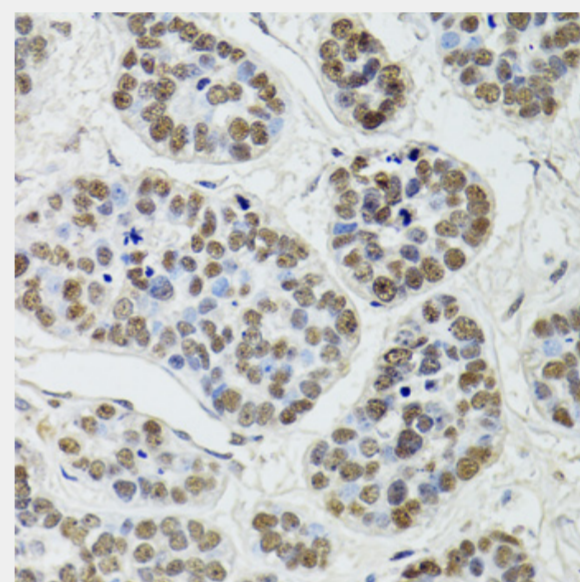
Immunohistochemistry of paraffin-embedded rat kidney using CDX2 antibody at dilution of 1:100 (40x lens).



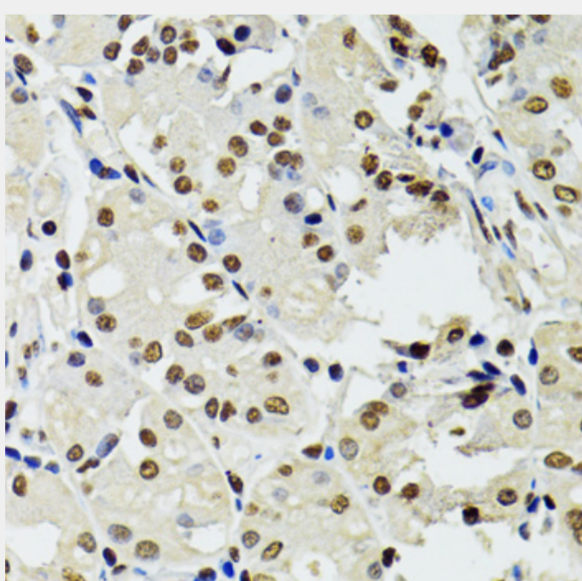
Immunohistochemistry of paraffin-embedded human lung cancer using CDX2 antibody at dilution of 1:100 (40x lens).



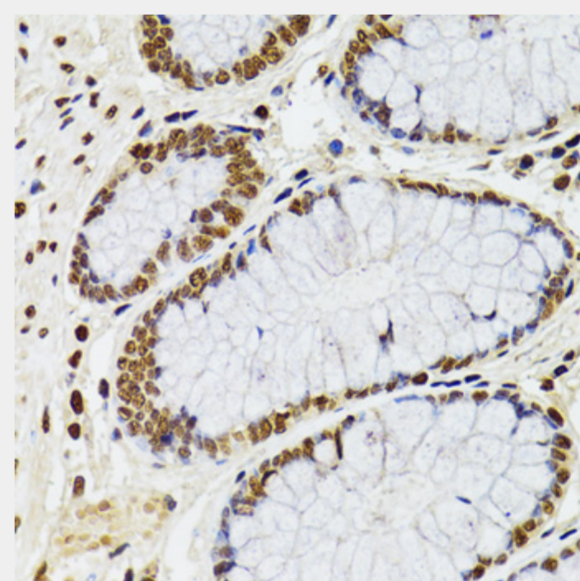
Immunohistochemistry of paraffin-embedded human prostate cancer using CDX2 antibody at dilution of 1:100 (40x lens).



Immunohistochemistry of paraffin-embedded human esophageal cancer using CDX2 antibody at dilution of 1:100 (40x lens).



Immunohistochemistry of paraffin-embedded human stomach using CDX2 antibody at dilution of 1:100 (40x lens).



Immunohistochemistry of paraffin-embedded human rectum using CDX2 antibody at dilution of 1:100 (40x lens).

All products are for RESEARCH USE ONLY. Not for diagnostic & therapeutic purposes!