

# SPARC Polyclonal Antibody

Catalog No: tcba6318



## Available Sizes

---

**Size:** 50ul

**Size:** 100ul

**Size:** 200ul



## Specifications

---

**Application:**

WB,IHC

**Research Area:**

Cancer,Stem cells,Cell cycle,Cardiovascular,Cell Biology,

**Species Reactivity:**

Human,Mouse,Rat

**Host Species:**

Rabbit

**Isotype:**

IgG

**Form:**

Liquid

**Storage Buffer:**

Buffer: PBS with 0.02% sodium azide, 50% glycerol, pH7.3.

**Recommended Dilution:**

WB 1:500 - 1:2000

IHC 1:50 - 1:200

**Storage Instruction:**

Store at -20°C. Avoid freeze / thaw cycles.

**Alternative Names:**

BM-40;OI17;ON

**SwissProt:**

P09486

**Gene ID:**

6678 (human);

**Calculated Molecular Weight:**

34kDa

**Purification:**

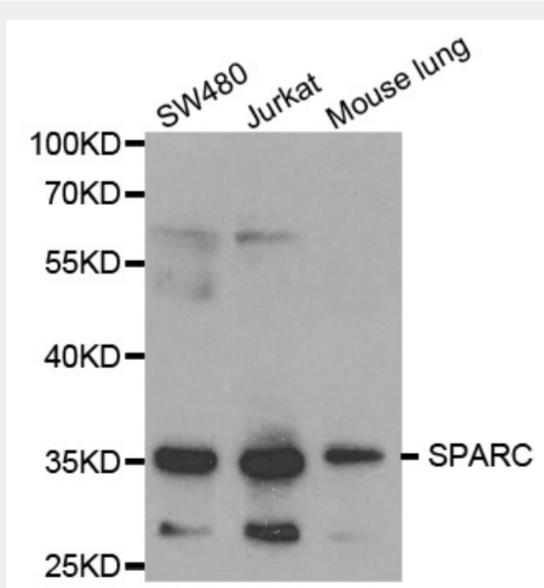
Affinity purification

**Cellular Location:**

Secreted,basement membrane,extracellular matrix,extracellular space,

**Product Description**

This gene encodes a cysteine-rich acidic matrix-associated protein. The encoded protein is required for the collagen in bone to become calcified but is also involved in extracellular matrix synthesis and promotion of changes to cell shape. The gene product has been associated with tumor suppression but has also been correlated with metastasis based on changes to cell shape which can promote tumor cell invasion. Three transcript variants encoding different isoforms have been found for this gene.

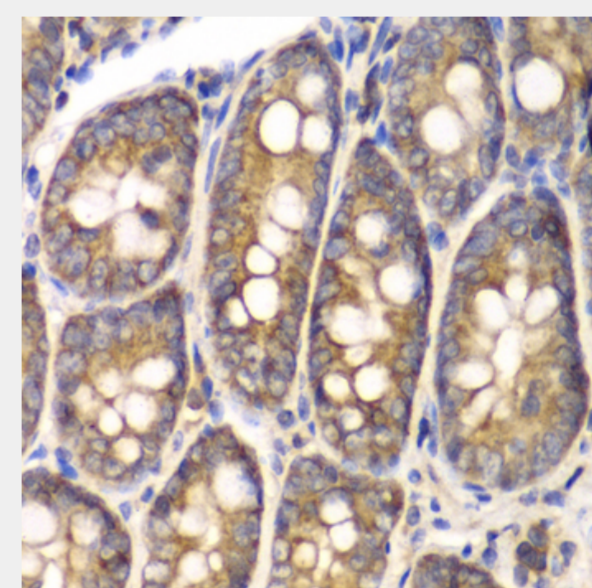


Western blot analysis of extracts of various cell lines, using SPARC antibody at 1:1000 dilution.

Secondary antibody: HRP Goat Anti-Rabbit IgG (H+L) at 1:10000 dilution.

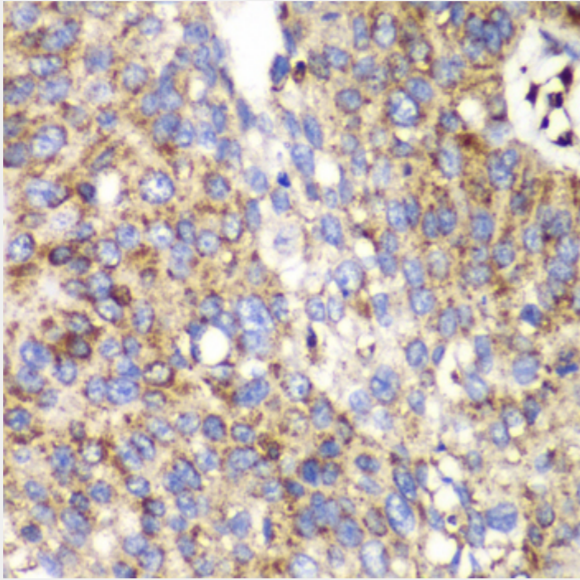
Lysates/proteins: 25ug per lane.

Blocking buffer: 3% nonfat dry milk in TBST.

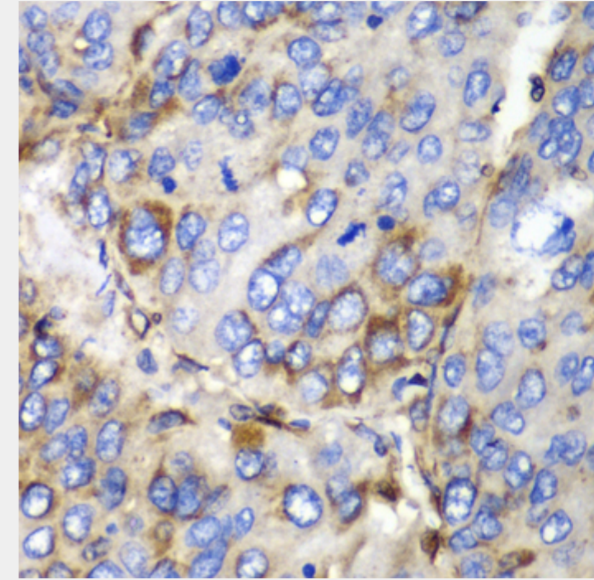


Immunohistochemistry of paraffin-embedded rat Intestine using SPARC antibody at dilution of 1:100 (40x lens).

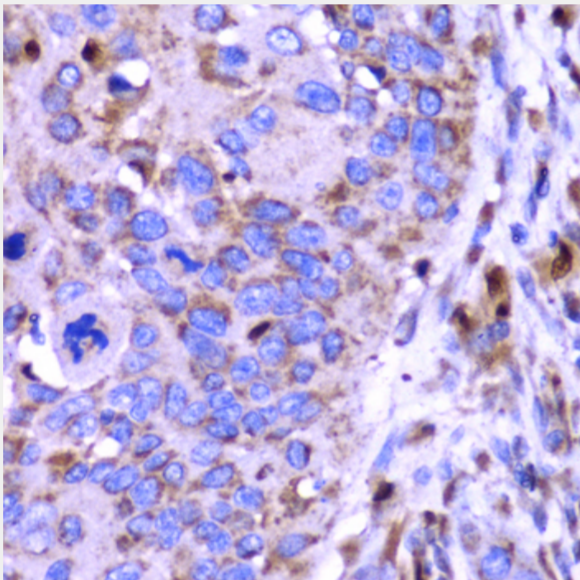




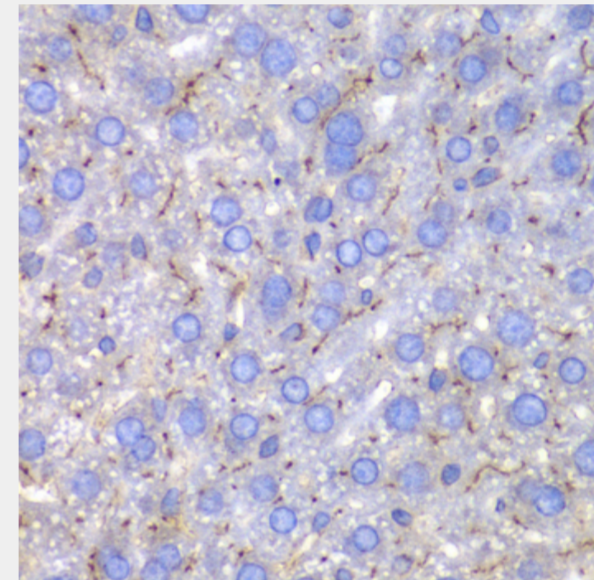
Immunohistochemistry of paraffin-embedded human lung cancer using SPARC antibody at dilution of 1:100 (40x lens).



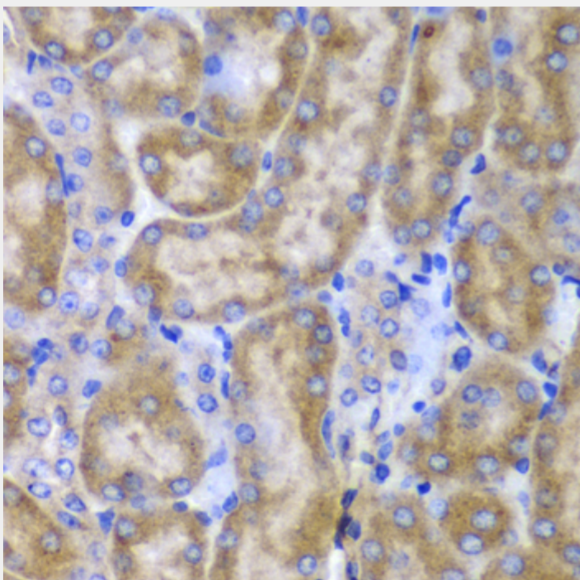
Immunohistochemistry of paraffin-embedded human liver cancer using SPARC antibody at dilution of 1:100 (40x lens).



Immunohistochemistry of paraffin-embedded human esophageal cancer using SPARC antibody at dilution of 1:100 (40x lens).



Immunohistochemistry of paraffin-embedded mouse liver using SPARC antibody at dilution of 1:100 (40x lens).



Immunohistochemistry of paraffin-embedded mouse kidney using SPARC antibody at dilution of 1:100 (40x lens).

All products are for RESEARCH USE ONLY. Not for diagnostic & therapeutic purposes!