

# ETS1 Polyclonal Antibody

Catalog No: tcba6110



## Available Sizes

---

**Size:** 50ul

---

**Size:** 100ul

---

**Size:** 200ul

---



## Specifications

---

**Application:**

WB,IHC,IF,IP

---

**Research Area:**

Cancer,MAPK pathway,Cardiovascular,MAPK/p38 pathway,MAPK/ERK pathway,Epigenetics,

---

**Species Reactivity:**

Human

---

**Host Species:**

Rabbit

---

**Isotype:**

IgG

---

**Form:**

Liquid

---

**Storage Buffer:**

Buffer: PBS with 0.02% sodium azide, 50% glycerol, pH7.3.

---

**Recommended Dilution:**

WB 1:500 - 1:2000

IHC 1:50 - 1:200

IF 1:50 - 1:100

IP 1:50 - 1:200

---

**Storage Instruction:**

Store at -20°C. Avoid freeze / thaw cycles.

**Alternative Names:**

c-ets-1;ETS-1;EWSR2;p54

**SwissProt:**

P14921

**Gene ID:**

2113 (human);

**Calculated Molecular Weight:**

25kDa/30kDa/40kDa/50kDa/55kDa

**Purification:**

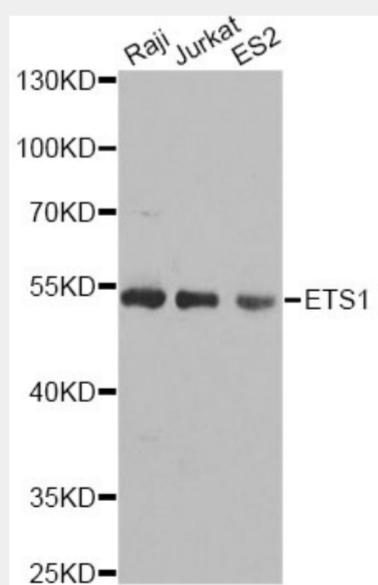
Affinity purification

**Cellular Location:**

Cytoplasm,Nucleus,

**Product Description**

This gene encodes a member of the ETS family of transcription factors, which are defined by the presence of a conserved ETS DNA-binding domain that recognizes the core consensus DNA sequence GGAA/T in target genes. These proteins function either as transcriptional activators or repressors of numerous genes, and are involved in stem cell development, cell senescence and death, and tumorigenesis. Alternatively spliced transcript variants encoding different isoforms have been described for this gene.

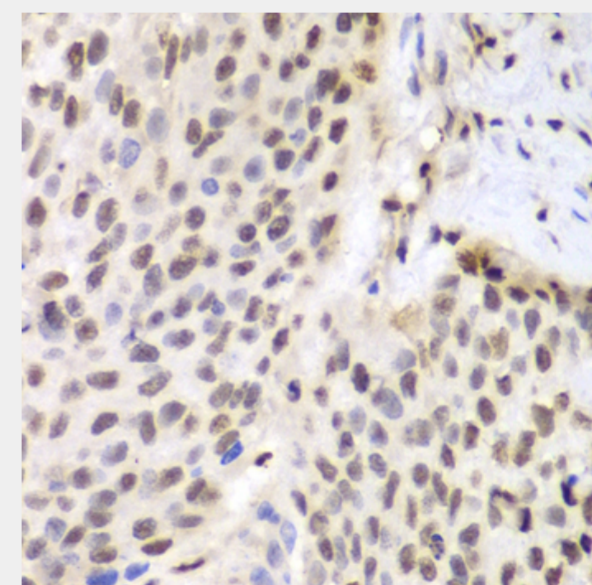


Western blot analysis of extracts of various cell lines, using ETS1 antibody at 1:1000 dilution.

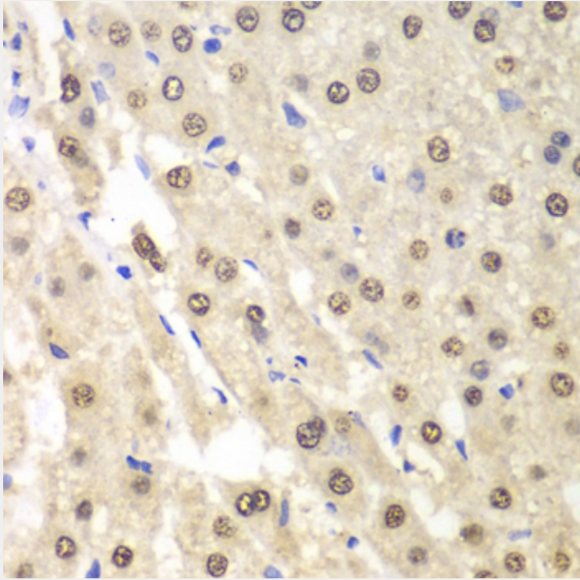
Secondary antibody: HRP Goat Anti-Rabbit IgG (H+L) at 1:10000 dilution.

Lysates/proteins: 25ug per lane.

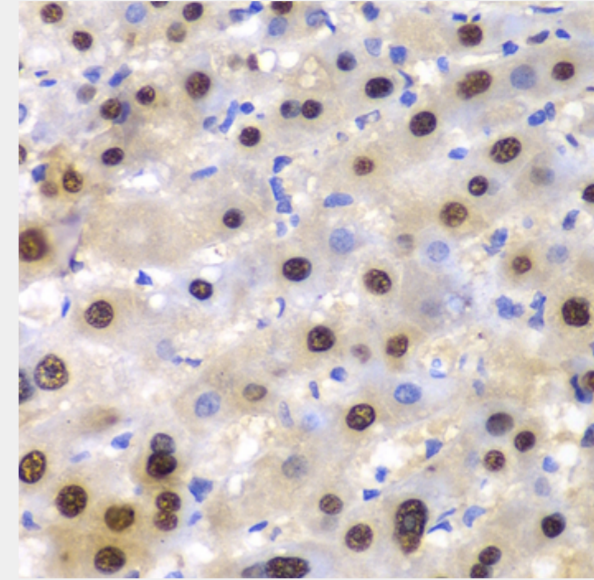
Blocking buffer: 3% nonfat dry milk in TBST.



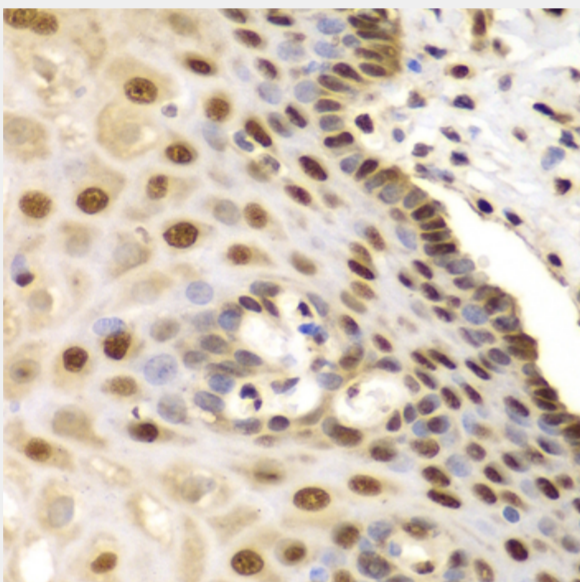
Immunohistochemistry of paraffin-embedded human lung cancer using ETS1 antibody at dilution of 1:100 (40x lens).



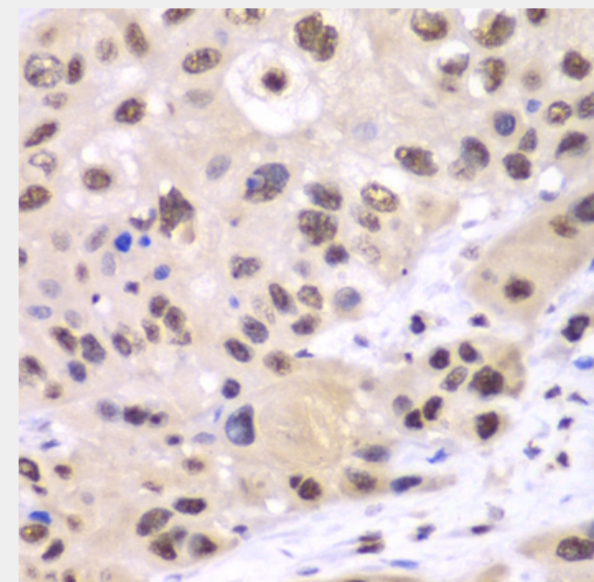
Immunohistochemistry of paraffin-embedded human liver cancer using ETS1 antibody at dilution of 1:100 (40x lens).



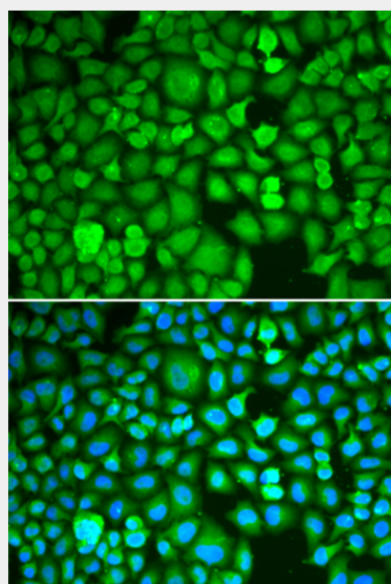
Immunohistochemistry of paraffin-embedded human liver injury using ETS1 antibody at dilution of 1:100 (40x lens).



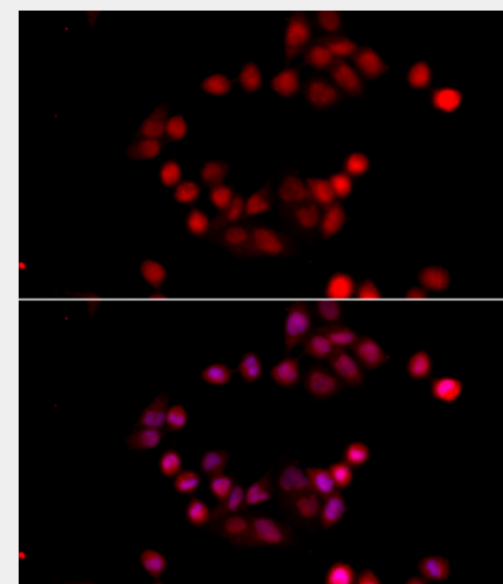
Immunohistochemistry of paraffin-embedded human esophagus using ETS1 antibody at dilution of 1:100 (40x lens).



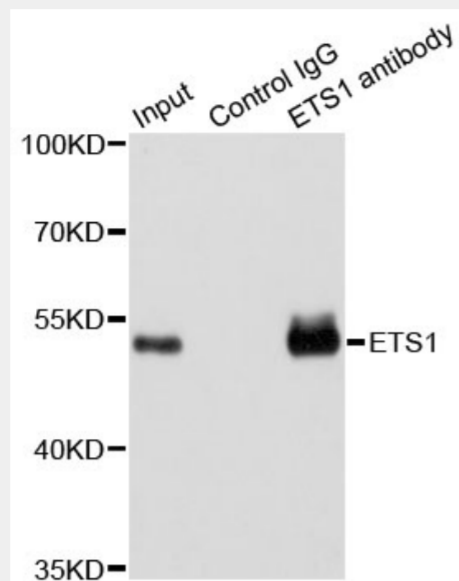
Immunohistochemistry of paraffin-embedded human esophageal cancer using ETS1 antibody at dilution of 1:100 (40x lens).



Immunofluorescence analysis of A549 cells using ETS1 antibody. Blue: DAPI for nuclear staining.



Immunofluorescence analysis of HeLa cells using ETS1 antibody at dilution of 1:100 (40x lens). Blue: DAPI for nuclear staining.



Immunoprecipitation analysis of 200ug extracts of Jurkat cells using 1ug ETS1 antibody. Western blot was performed from the immunoprecipitate using ETS1 antibody at a dilution of 1:1000.

All products are for RESEARCH USE ONLY. Not for diagnostic & therapeutic purposes!