

Polyclonal Antibody to Complement Component 2 (C2)

Catalog No: tcua5922



Available Sizes

Size: 20ul

Size: 100ul

Size: 200ul



Specifications

Application:

WB; IHC; ICC; IP.

Species Reactivity:

Homo sapiens (Human)

Host Species:

Rabbit

Immunogen / Amino acids:

Recombinant Complement Component 2 (C2)

Conjugation:

Unconjugated

Clonality:

Polyclonal

Form:

Liquid

Storage Buffer:

0.01M PBS, pH7.4, containing 0.05% Proclin-300, 50% glycerol.

Recommended Dilution:

Western blotting: 0.5-2µg/mL

Immunocytochemistry in formalin fixed cells: 5-20µg/mL
 Immunohistochemistry in formalin fixed frozen section: 5-20µg/mL
 Immunohistochemistry in paraffin section: 5-20µg/mL
 Optimal workin

Alternative Names:

CO2; C3/C5 convertase

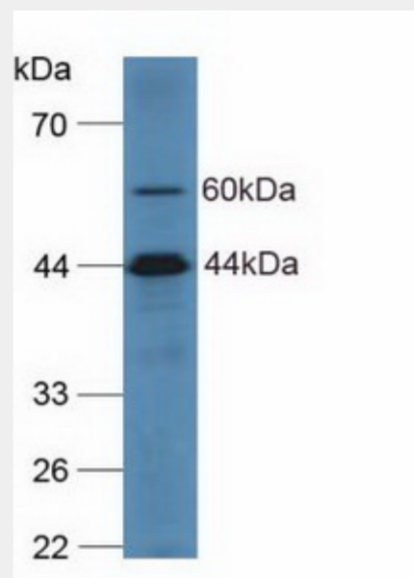
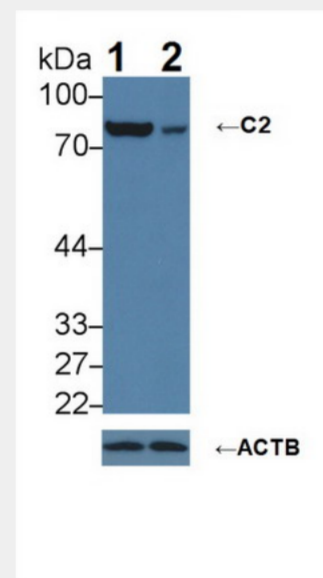


Figure. Western Blot; Sample: Human Hela Cells.)



Knockout Varification: Lane 1: Wild-type A431 cell lysate; Lane 2: C2 knockout A431 cell lysate; Predicted MW: 60,69,83kDa Observed MW: 83kDa Primary Ab: 1µg/ml Rabbit Anti-Human C2 Antibody Second Ab: 0.2µg/mL HRP-Linked Caprine Anti-Rabbit IgG Polyclonal Antibody Catalog: SAA544Rb19)

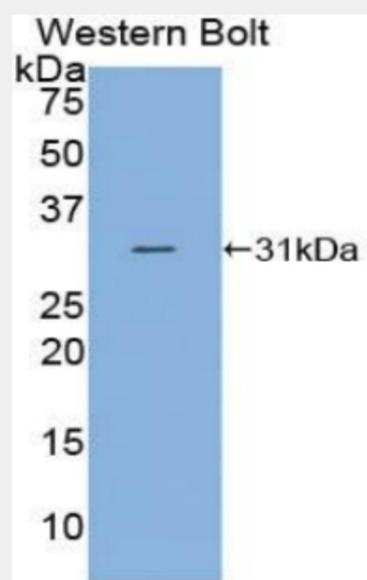


Figure. Western Bolt; Sample: Recombinant C2, Human.)

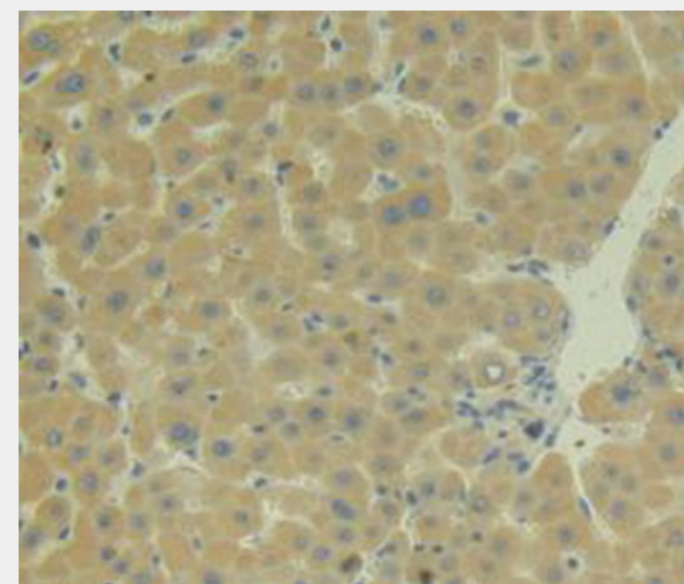


Figure. DAB staining on IHC-P; Samples: Human Liver Tissue.)

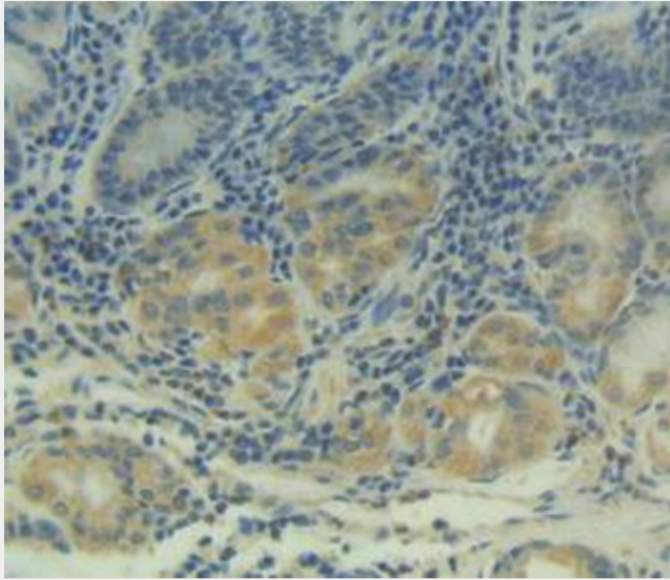


Figure. DAB staining on IHC-P; Samples: Human Stomach Tissue.)

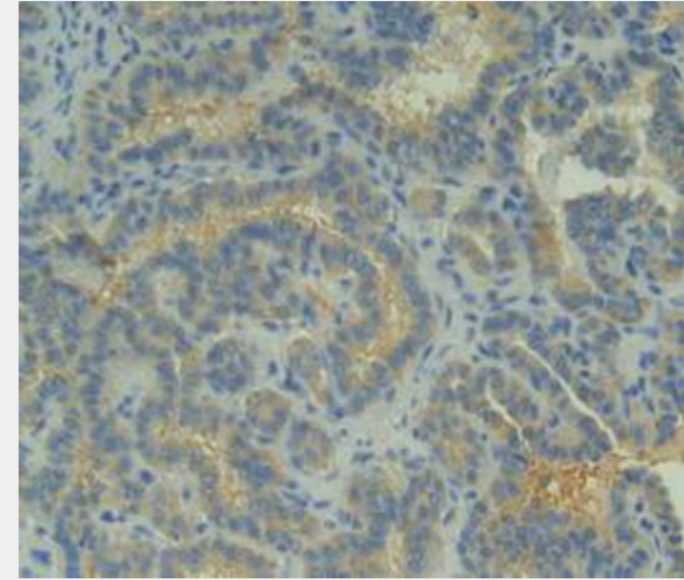


Figure. DAB staining on IHC-P; Samples: Human Thyroid Cancer Tissue.)

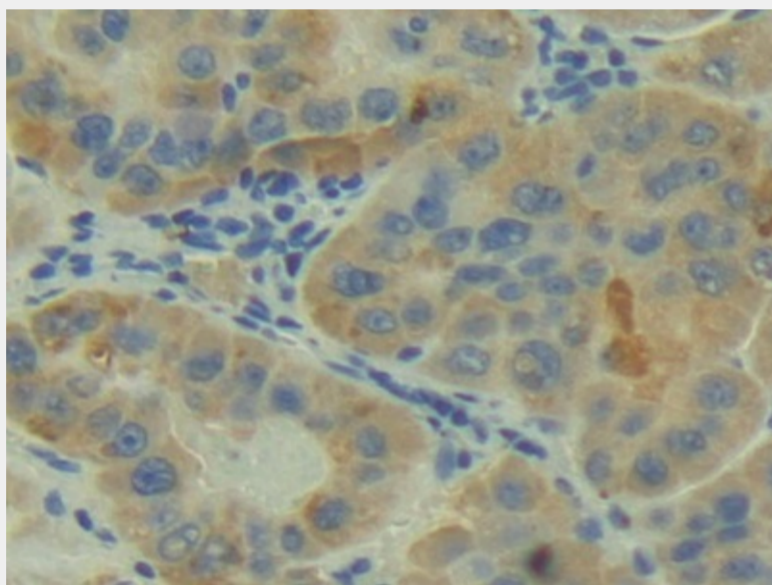


Figure. DAB staining on IHC-P; Samples: Human Liver Cancer Tissue.)

All products are for RESEARCH USE ONLY. Not for diagnostic & therapeutic purposes!