

BSG Polyclonal Antibody

Catalog No: tcba5780



Available Sizes

Size: 50ul

Size: 100ul

Size: 200ul



Specifications

Application:

WB,IHC

Research Area:

Cancer,Neuroscience,Immunology,Metabolism,

Species Reactivity:

Human,Mouse

Host Species:

Rabbit

Isotype:

IgG

Form:

Liquid

Storage Buffer:

Buffer: PBS with 0.02% sodium azide, 50% glycerol, pH7.3.

Recommended Dilution:

WB 1:500 - 1:2000

IHC 1:50 - 1:200

Storage Instruction:

Store at -20°C. Avoid freeze / thaw cycles.

Alternative Names:

5F7;CD147;EMMPRIN;OK;TCSF

SwissProt:

P35613

Gene ID:

682 (human);

Calculated Molecular Weight:

19kDa/22kDa/29kDa/42kDa

Purification:

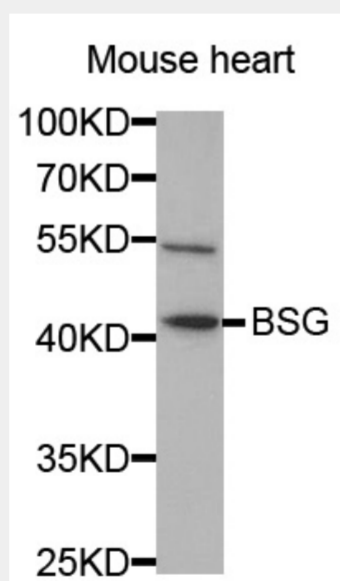
Affinity purification

Cellular Location:

Cell membrane,Melanosome,Single-pass type I membrane protein,

Product Description

The protein encoded by this gene is a plasma membrane protein that is important in spermatogenesis, embryo implantation, neural network formation, and tumor progression. The encoded protein is also a member of the immunoglobulin superfamily. Multiple transcript variants encoding different isoforms have been found for this gene.

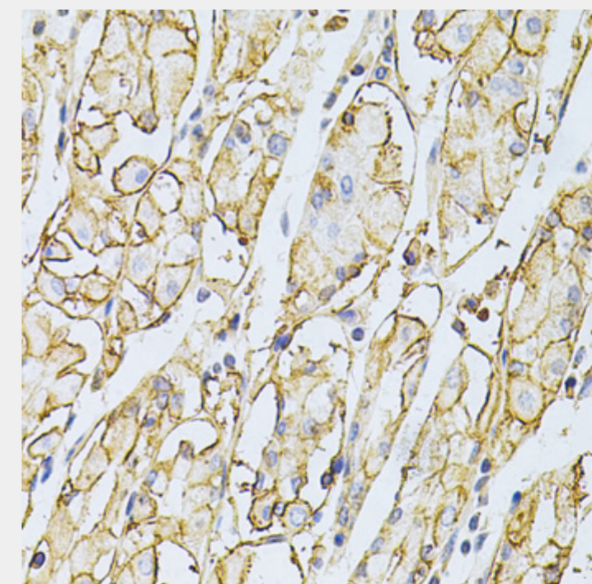


Western blot analysis of extracts of mouse heart, using BSG antibody at 1:1000 dilution.

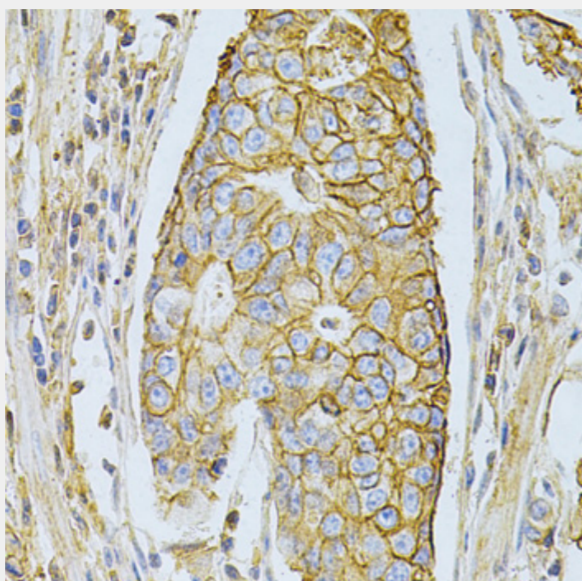
Secondary antibody: HRP Goat Anti-Rabbit IgG (H+L) at 1:10000 dilution.

Lysates/proteins: 25ug per lane.

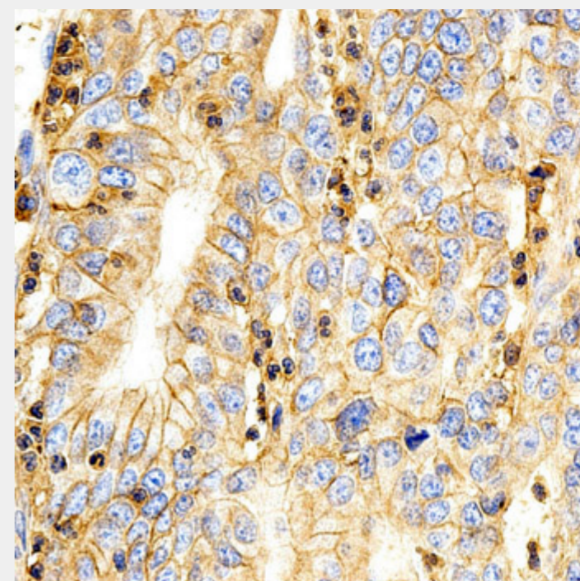
Blocking buffer: 3% nonfat dry milk in TBST.



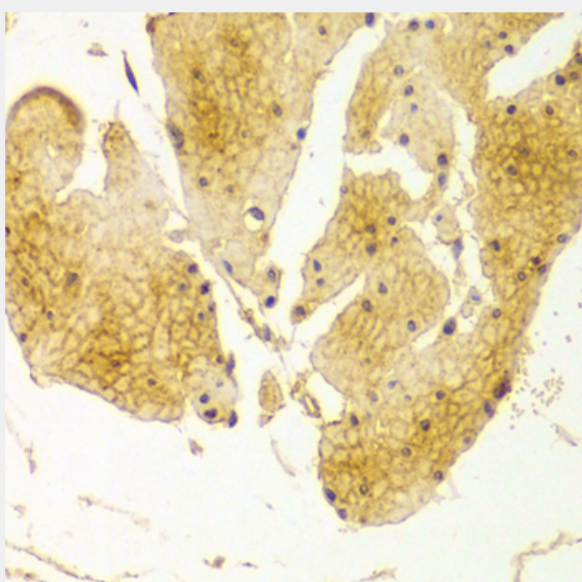
Immunohistochemistry of paraffin-embedded human stomach using BSG Antibody at dilution of 1:200 (40x lens).



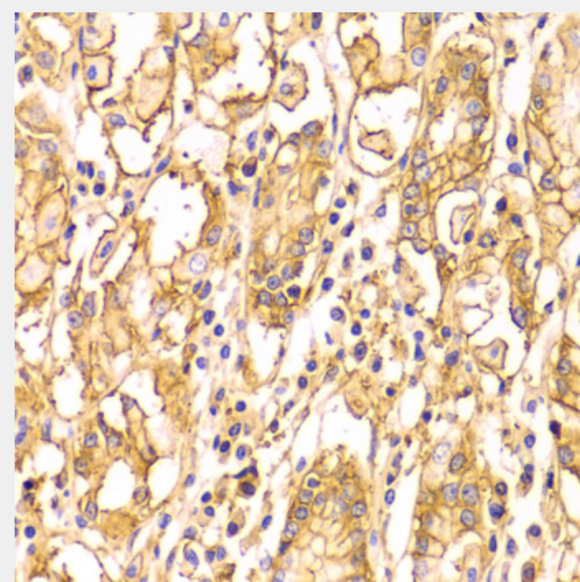
Immunohistochemistry of paraffin-embedded human gastric cancer using BSG Antibody at dilution of 1:200 (40x lens).



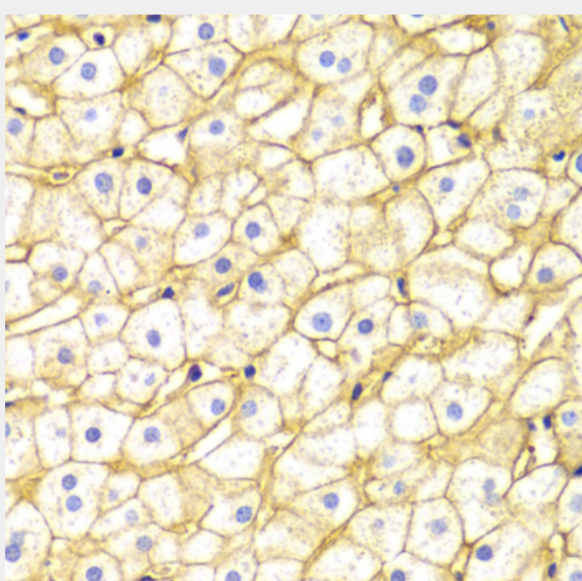
Immunohistochemistry of paraffin-embedded human gastric cancer using BSG Antibody at dilution of 1:200 (40x lens).



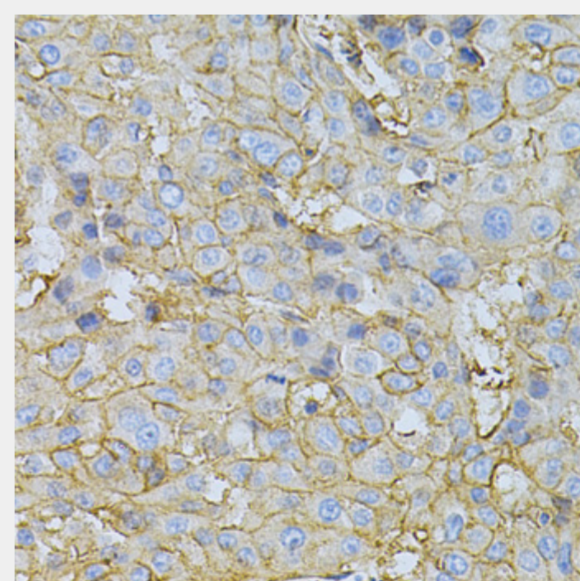
Immunohistochemistry of paraffin-embedded human esophagus using BSG Antibody at dilution of 1:100 (40x lens).



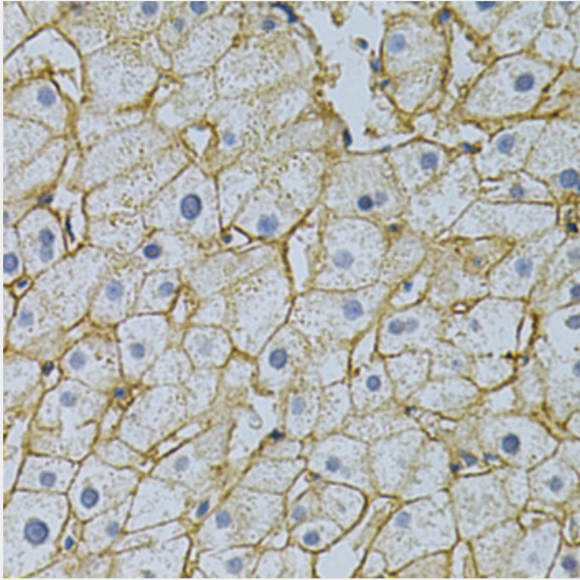
Immunohistochemistry of paraffin-embedded human stomach using BSG Antibody at dilution of 1:100 (40x lens).



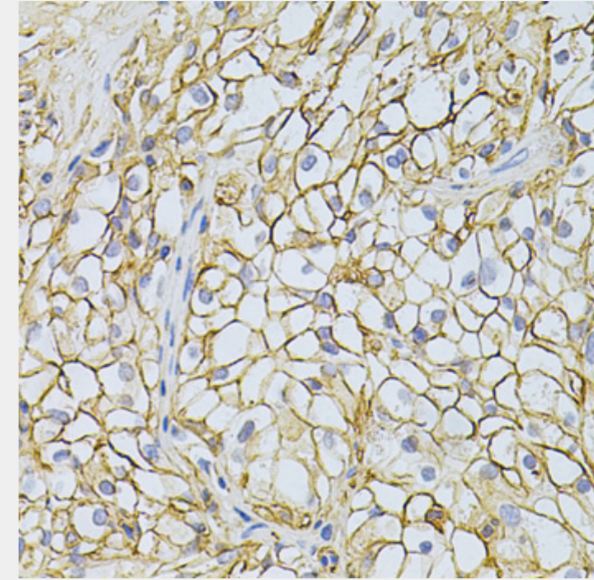
Immunohistochemistry of paraffin-embedded human liver injury using BSG Antibody at dilution of 1:100 (40x lens).



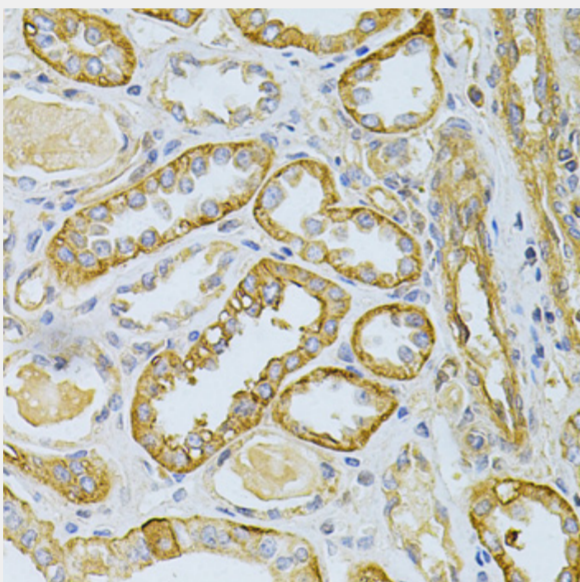
Immunohistochemistry of paraffin-embedded human liver cancer using BSG Antibody at dilution of 1:200 (40x lens).



Immunohistochemistry of paraffin-embedded human liver injury using BSG Antibody at dilution of 1:200 (40x lens).



Immunohistochemistry of paraffin-embedded human kidney using BSG Antibody at dilution of 1:200 (40x lens).



Immunohistochemistry of paraffin-embedded human kidney cancer using BSG Antibody at dilution of 1:200 (40x lens).

All products are for RESEARCH USE ONLY. Not for diagnostic & therapeutic purposes!