

MAP1LC3B Polyclonal Antibody

Catalog No: tcba5708



Available Sizes

Size: 50ul

Size: 100ul

Size: 200ul



Specifications

Application:

WB,IHC,IF

Research Area:

Cancer,Autophagy pathway,Neuroscience,Cardiovascular,Metabolism,

Species Reactivity:

Human,Mouse,Rat

Host Species:

Rabbit

Isotype:

IgG

Form:

Liquid

Storage Buffer:

Buffer: PBS with 0.02% sodium azide, 50% glycerol, pH7.3.

Recommended Dilution:

WB 1:500 - 1:2000

IHC 1:50 - 1:200

IF 1:50 - 1:200

Storage Instruction:

Store at -20°C. Avoid freeze / thaw cycles.

Alternative Names:

ATG8F;LC3B;MAP1A/1BLC3;MAP1LC3B-a

SwissProt:

Q9GZQ8

Gene ID:

81631 (human);

Calculated Molecular Weight:

14kDa

Purification:

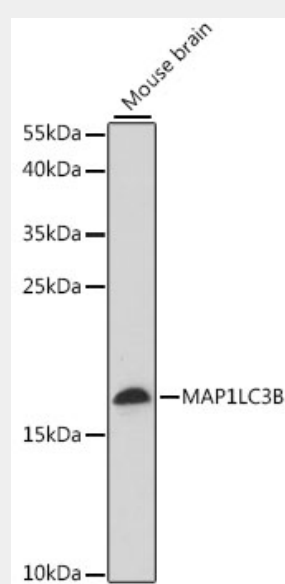
Affinity purification

Cellular Location:

Cytoplasm,Cytoplasmic vesicle,Endomembrane system,Lipid-anchor,autophagosome,autophagosome membrane,cytoskeleton,

Product Description

The product of this gene is a subunit of neuronal microtubule-associated MAP1A and MAP1B proteins, which are involved in microtubule assembly and important for neurogenesis. Studies on the rat homolog implicate a role for this gene in autophagy, a process that involves the bulk degradation of cytoplasmic component.



Western blot analysis of extracts of mouse brain, using MAP1LC3B antibody at 1:1000 dilution.

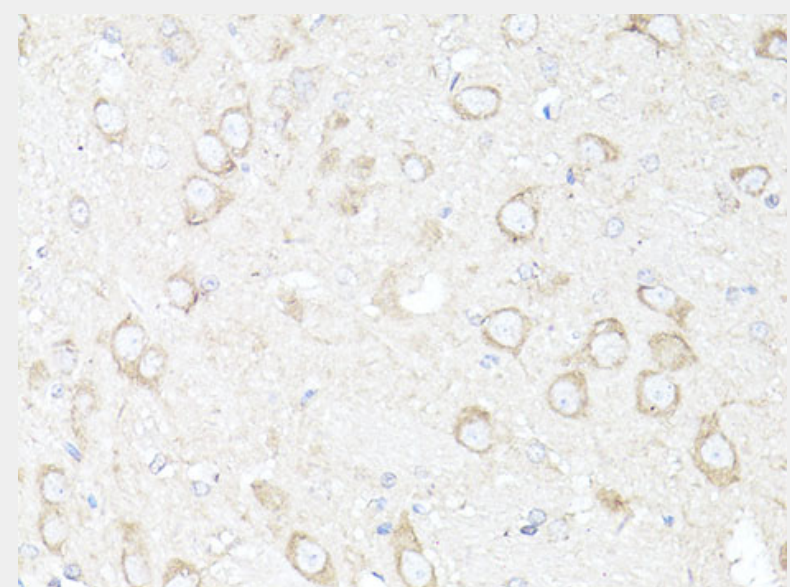
Secondary antibody: HRP Goat Anti-Rabbit IgG (H+L) at 1:10000 dilution.

Lysates/proteins: 25ug per lane.

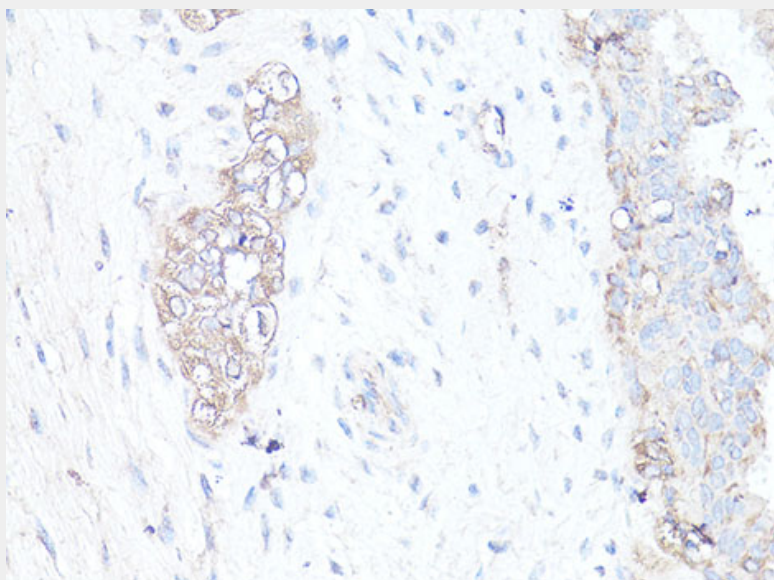
Blocking buffer: 3% nonfat dry milk in TBST.

Detection: ECL Basic Kit.

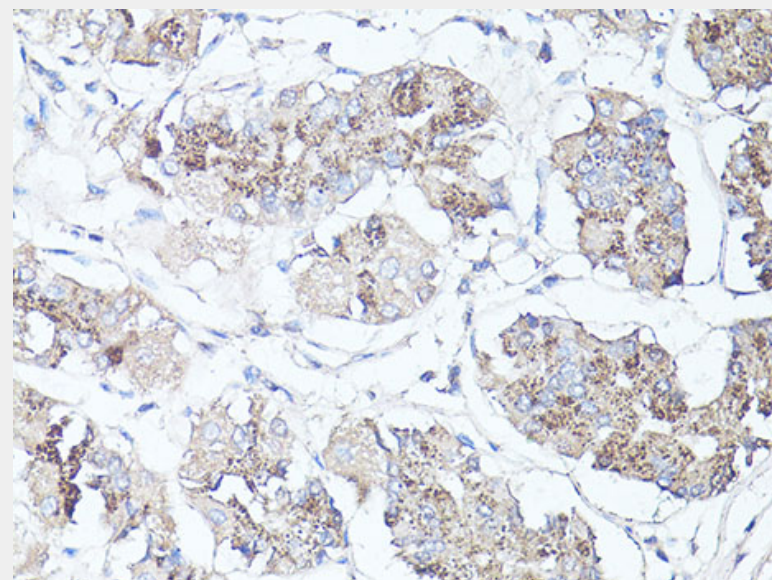
Exposure time: 2min.



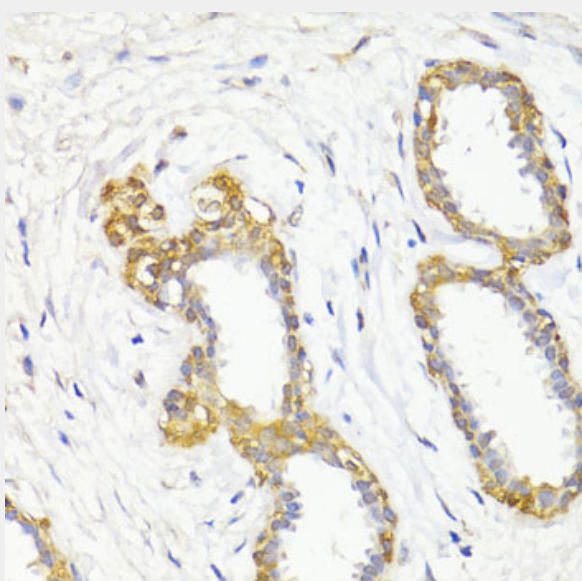
Immunohistochemistry of paraffin-embedded rat brain using MAP1LC3B antibody at dilution of 1:100 (40x lens).



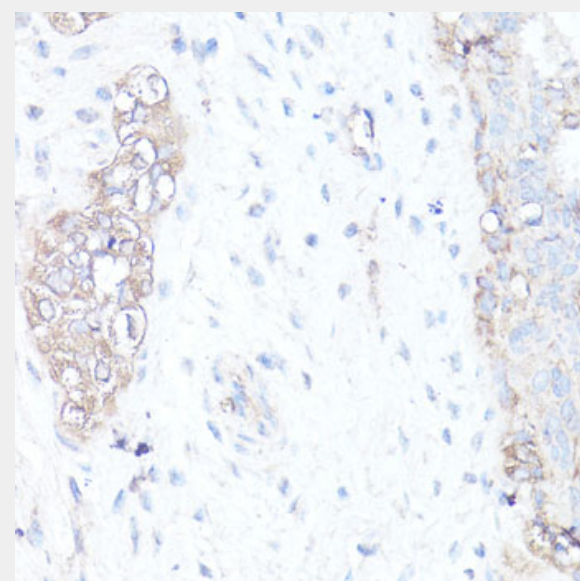
Immunohistochemistry of paraffin-embedded human breast cancer using MAP1LC3B antibody at dilution of 1:100 (40x lens).



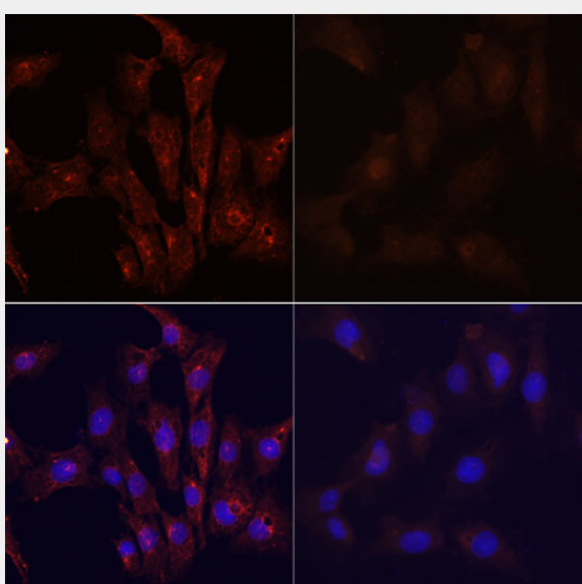
Immunohistochemistry of paraffin-embedded human stomach using MAP1LC3B antibody at dilution of 1:100 (40x lens).



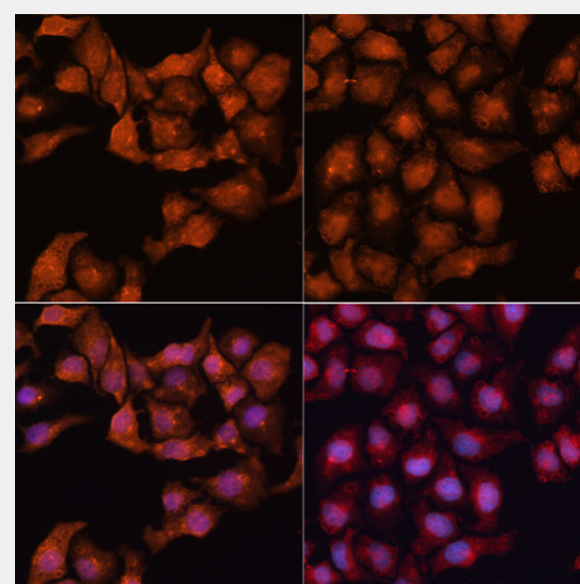
Immunohistochemistry of paraffin-embedded human breast using MAP1LC3B antibody at dilution of 1:100 (40x lens).



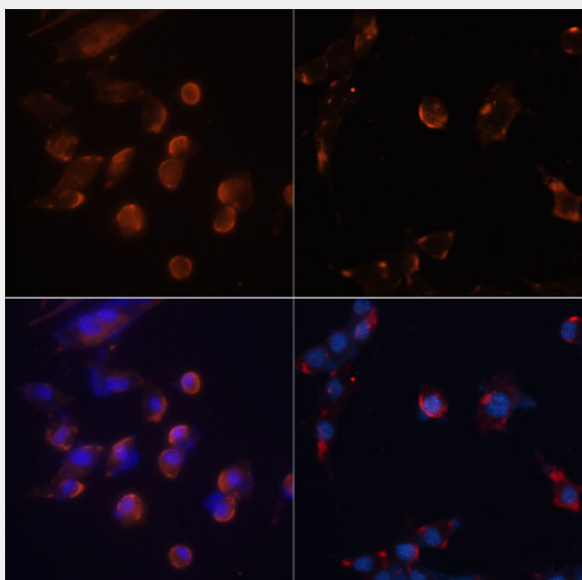
Immunohistochemistry of paraffin-embedded human mammary cancer using MAP1LC3B antibody at dilution of 1:100 (40x lens).



Immunofluorescence analysis of C6 cells using MAP1LC3B antibody at dilution of 1:100. C6 cells were treated by Chloroquine (50 μ M) for 20 hours(left). Blue: DAPI for nuclear staining.



Immunofluorescence analysis of HeLa cells using MAP1LC3B antibody at dilution of 1:100. Hela cells were treated by Chloroquine (50 μ M) for 20 hours(left). Blue: DAPI for nuclear staining.



Immunofluorescence analysis of NIH/3T3 cells using MAP1LC3B antibody at dilution of 1:100. NIH/3T3 cells were treated by Chloroquine (50 μ M) for 20 hours(left). Blue: DAPI for nuclear staining.

All products are for RESEARCH USE ONLY. Not for diagnostic & therapeutic purposes!