

RBBP4 Polyclonal Antibody

Catalog No: tcba4977



Available Sizes

Size: 50ul

Size: 100ul

Size: 200ul



Specifications

Application:

WB,IHC,IF,IP,ChIP

Research Area:

Cancer,Cell cycle,Cell Biology,Chromatin Remodeling,

Species Reactivity:

Human,Mouse,Rat,Monkey

Host Species:

Rabbit

Isotype:

IgG

Form:

Liquid

Storage Buffer:

Buffer: PBS with 0.02% sodium azide, 50% glycerol, pH7.3.

Recommended Dilution:

WB 1:500 - 1:2000

IHC 1:50 - 1:200

IF 1:50 - 1:200

IP 1:50 - 1:200

ChIP 1:20 - 1:100

Storage Instruction:

Store at -20°C. Avoid freeze / thaw cycles.

SwissProt:

Q09028

Gene ID:

5928 (human);

Calculated Molecular Weight:

43kDa/46kDa/47kDa

Purification:

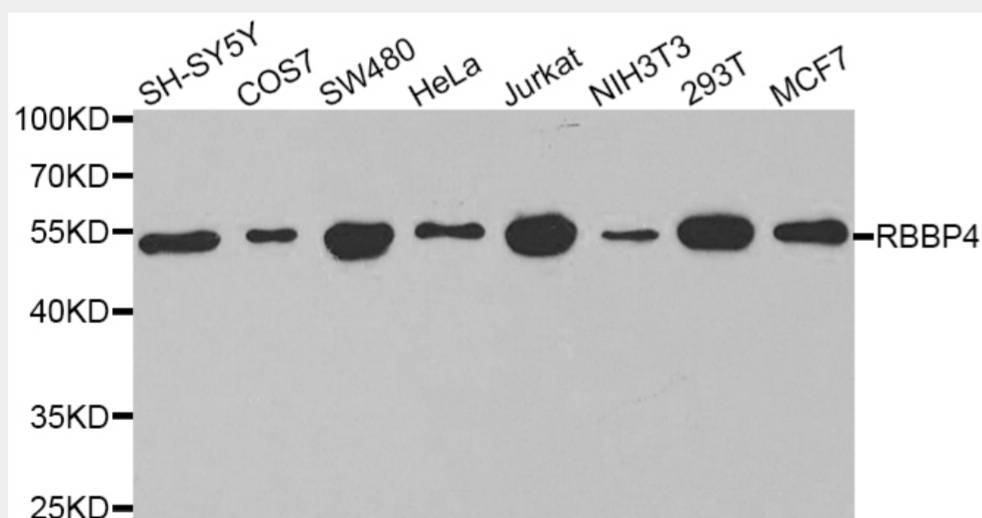
Affinity purification

Cellular Location:

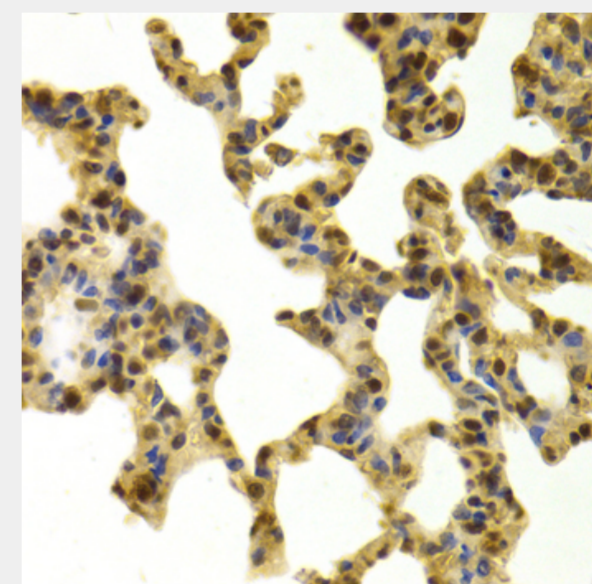
Nucleus,

Product Description

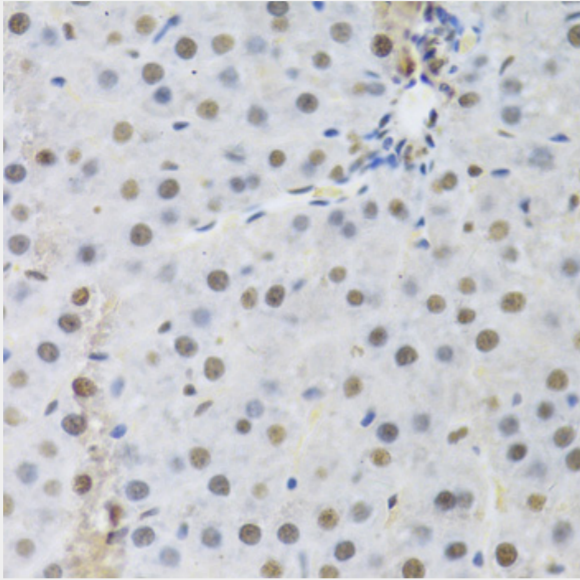
This gene encodes a ubiquitously expressed nuclear protein which belongs to a highly conserved subfamily of WD-repeat proteins. It is present in protein complexes involved in histone acetylation and chromatin assembly. It is part of the Mi-2 complex which has been implicated in chromatin remodeling and transcriptional repression associated with histone deacetylation. This encoded protein is also part of co-repressor complexes, which is an integral component of transcriptional silencing. It is found among several cellular proteins that bind directly to retinoblastoma protein to regulate cell proliferation. This protein also seems to be involved in transcriptional repression of E2F-responsive genes. Three transcript variants encoding different isoforms have been found for this gene.



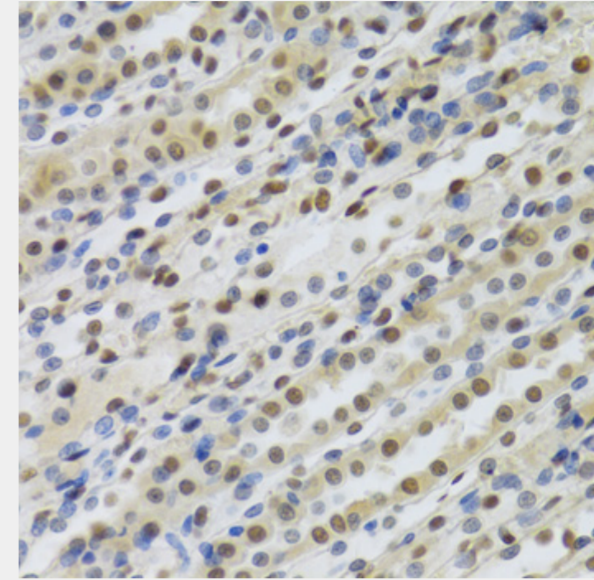
Western blot analysis of extracts of various cell lines, using RBBP4 antibody at 1:1000 dilution.
Secondary antibody: HRP Goat Anti-Rabbit IgG (H+L) at 1:10000 dilution.
Lysates/proteins: 25ug per lane.
Blocking buffer: 3% nonfat dry milk in TBST.



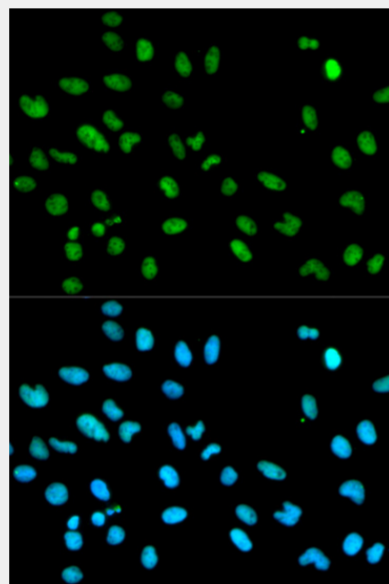
Immunohistochemistry of paraffin-embedded mouse lung using RBBP4 Antibody at dilution of 1:100 (40x lens).



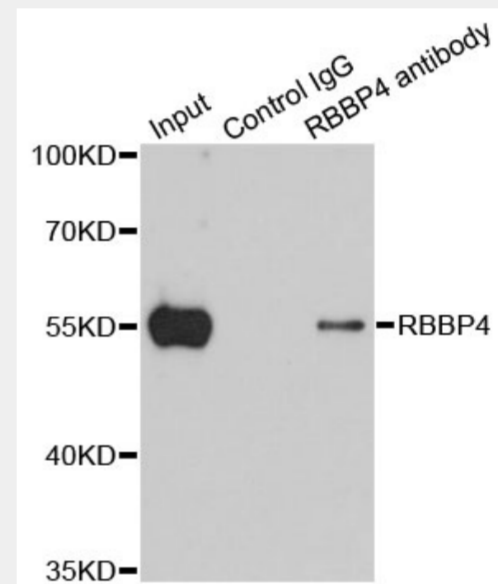
Immunohistochemistry of paraffin-embedded rat liver using RBBP4 Antibody at dilution of 1:100 (40x lens).



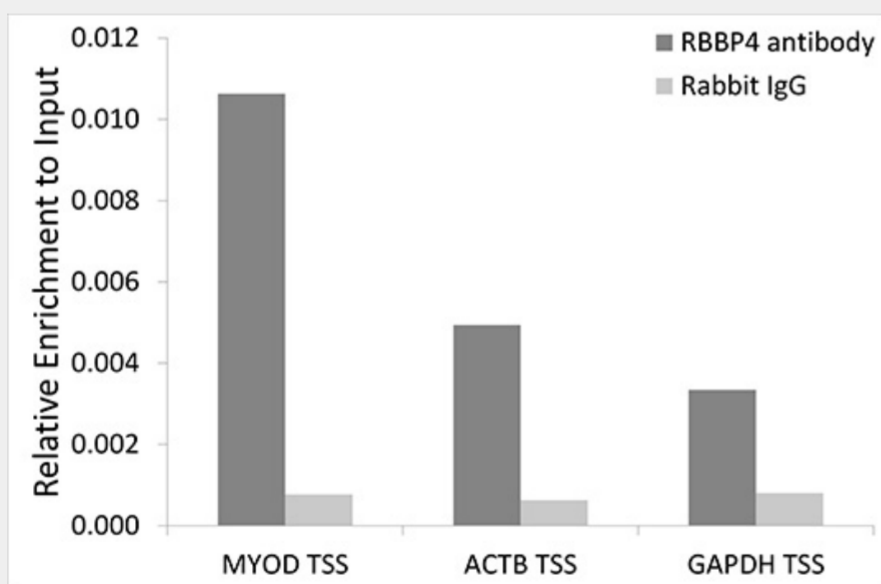
Immunohistochemistry of paraffin-embedded rat kidney using RBBP4 Antibody at dilution of 1:100 (40x lens).



Immunofluorescence analysis of MCF-7 cells using RBBP4 antibody. Blue: DAPI for nuclear staining.



Immunoprecipitation analysis of 200ug extracts of 293T cells using 1ug RBBP4 antibody. Western blot was performed from the immunoprecipitate using RBBP4 antibody at a dilution of 1:1000.



Chromatin immunoprecipitation analysis extracts of 293T cells, using RBBP4 antibody and rabbit IgG. The amount of immunoprecipitated DNA was checked by quantitative PCR. Histogram was constructed by the ratios of the immunoprecipitated DNA to the input.

All products are for RESEARCH USE ONLY. Not for diagnostic & therapeutic purposes!