

ABCB7 Polyclonal Antibody

Catalog No: tcba4763



Available Sizes

Size: 50ul

Size: 100ul

Size: 200ul



Specifications

Application:

WB,IHC,IF

Research Area:

Cancer,Stem cells,Metabolism,

Species Reactivity:

Human,Mouse,Rat

Host Species:

Rabbit

Isotype:

IgG

Form:

Liquid

Storage Buffer:

Buffer: PBS with 0.02% sodium azide, 50% glycerol, pH7.3.

Recommended Dilution:

WB 1:500 - 1:2000

IHC 1:50 - 1:200

IF 1:50 - 1:200

Storage Instruction:

Store at -20°C. Avoid freeze / thaw cycles.

Alternative Names:

ABC7;ASAT;Atm1p;EST140535

SwissProt:

O75027

Gene ID:

22 (human);

Calculated Molecular Weight:

78kDa/82kDa

Purification:

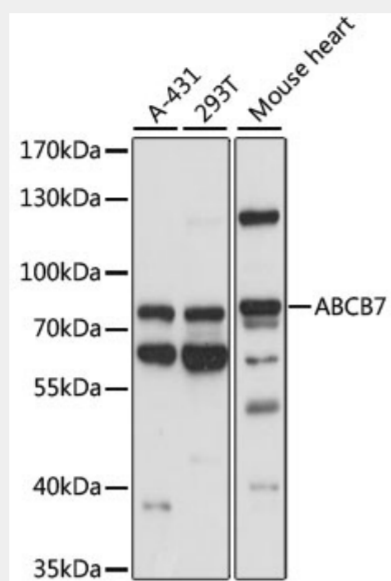
Affinity purification

Cellular Location:

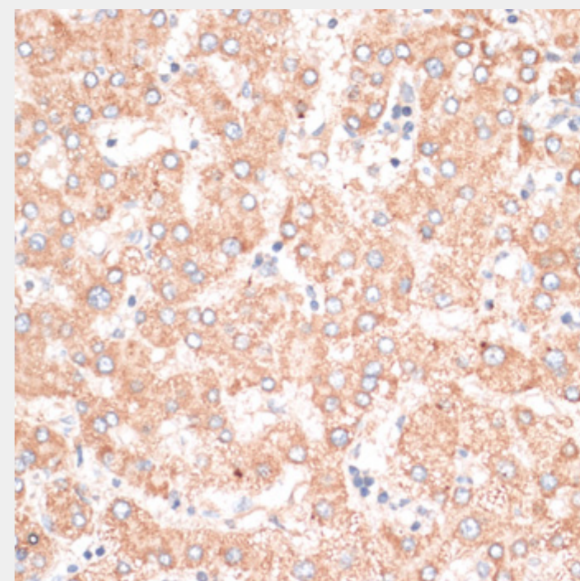
Mitochondrion inner membrane,Multi-pass membrane protein,

Product Description

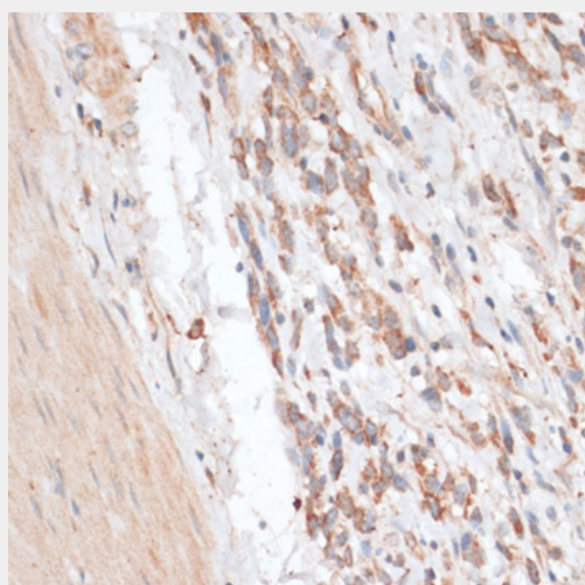
The membrane-associated protein encoded by this gene is a member of the superfamily of ATP-binding cassette (ABC) transporters. ABC proteins transport various molecules across extra- and intra-cellular membranes. ABC genes are divided into seven distinct subfamilies (ABC1, MDR/TAP, MRP, ALD, OABP, GCN20, White). This protein is a member of the MDR/TAP subfamily. Members of the MDR/TAP subfamily are involved in multidrug resistance as well as antigen presentation. This gene encodes a half-transporter involved in the transport of heme from the mitochondria to the cytosol. With iron/sulfur cluster precursors as its substrates, this protein may play a role in metal homeostasis. Mutations in this gene have been associated with mitochondrial iron accumulation and isodicentric (X)(q13) and sideroblastic anemia. Alternatively spliced transcript variants encoding multiple isoforms have been observed for this gene.



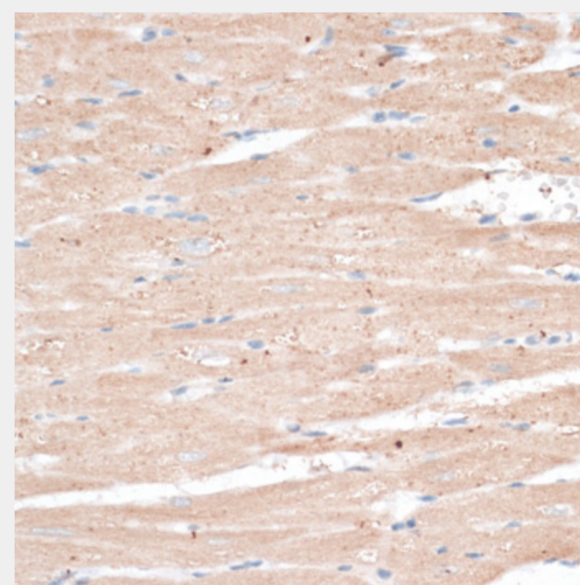
Western blot analysis of extracts of various cell lines, using ABCB7 antibody at 1:1000 dilution.
Secondary antibody: HRP Goat Anti-Rabbit IgG (H+L) at 1:10000 dilution.
Lysates/proteins: 25ug per lane.
Blocking buffer: 3% nonfat dry milk in TBST.
Detection: ECL Basic Kit.
Exposure time: 10s.



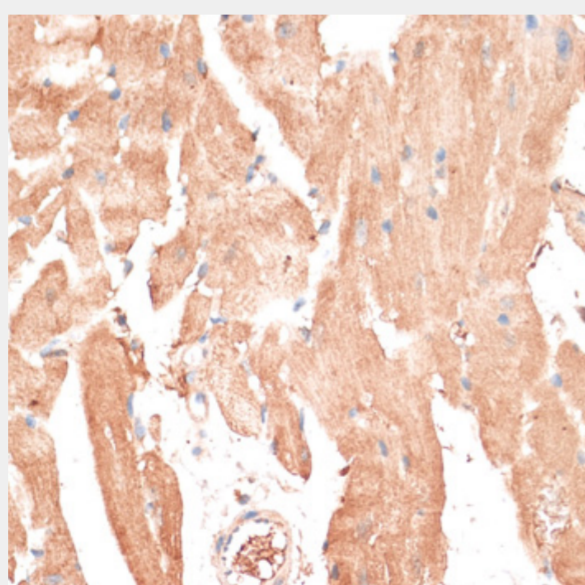
Immunohistochemistry of paraffin-embedded human liver using ABCB7 antibody at dilution of 1:100 (40x lens).



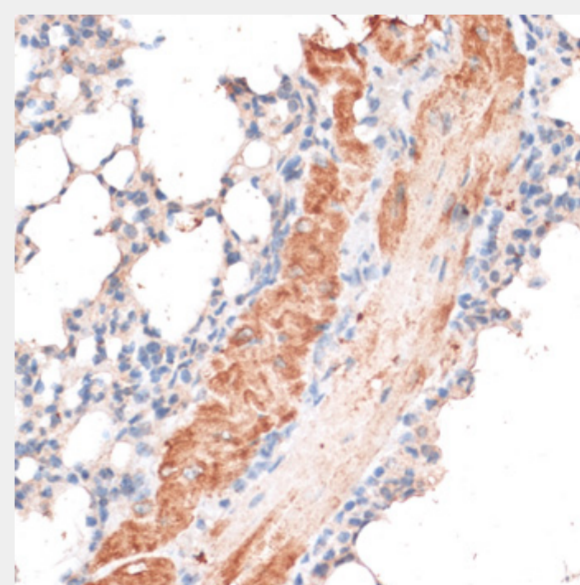
Immunohistochemistry of paraffin-embedded human gastric cancer using ABCB7 antibody at dilution of 1:100 (40x lens).



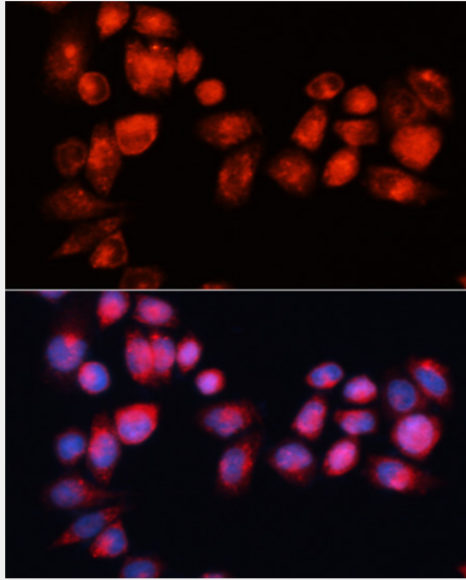
Immunohistochemistry of paraffin-embedded rat heart using ABCB7 antibody at dilution of 1:100 (40x lens).



Immunohistochemistry of paraffin-embedded mouse heart using ABCB7 antibody at dilution of 1:100 (40x lens).



Immunohistochemistry of paraffin-embedded mouse lung using ABCB7 antibody at dilution of 1:100 (40x lens).



Immunofluorescence analysis of HeLa cells using ABCB7 antibody at dilution of 1:100 (40x lens). Blue: DAPI for nuclear staining.

All products are for RESEARCH USE ONLY. Not for diagnostic & therapeutic purposes!