

# S100A10 Polyclonal Antibody

Catalog No: tcba4725



## Available Sizes

---

**Size:** 50ul

**Size:** 100ul

**Size:** 200ul



## Specifications

---

**Application:**

WB,IHC

**Research Area:**

Cardiovascular,Calcium pathway,

**Species Reactivity:**

Human,Mouse,Rat,Monkey

**Host Species:**

Rabbit

**Isotype:**

IgG

**Form:**

Liquid

**Storage Buffer:**

Buffer: PBS with 0.02% sodium azide, 50% glycerol, pH7.3.

**Recommended Dilution:**

WB 1:500 - 1:2000

IHC 1:50 - 1:200

**Storage Instruction:**

Store at -20°C. Avoid freeze / thaw cycles.

**Alternative Names:**

42C;ANX2L;ANX2LG;CAL1L;Ca[1];CLP11;GP11;p10;P11

**SwissProt:**

P60903

**Gene ID:**

6281 (human);

**Calculated Molecular Weight:**

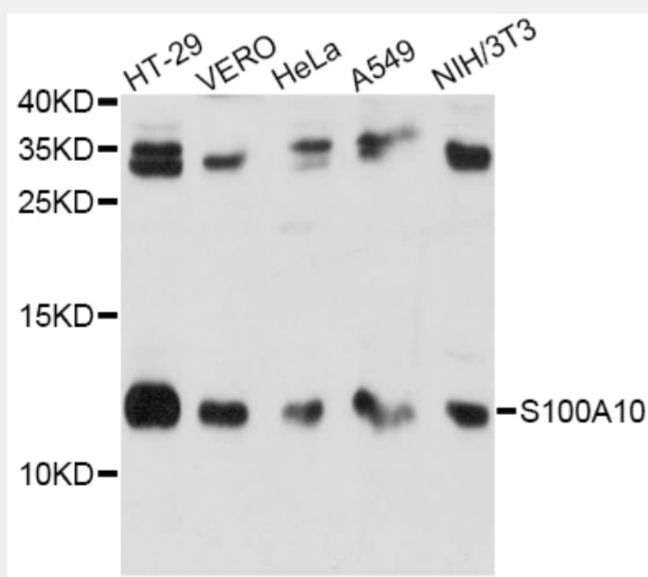
11kDa

**Purification:**

Affinity purification

**Product Description**

The protein encoded by this gene is a member of the S100 family of proteins containing 2 EF-hand calcium-binding motifs. S100 proteins are localized in the cytoplasm and/or nucleus of a wide range of cells, and involved in the regulation of a number of cellular processes such as cell cycle progression and differentiation. S100 genes include at least 13 members which are located as a cluster on chromosome 1q21. This protein may function in exocytosis and endocytosis.



Western blot analysis of extracts of various cell lines, using S100A10 antibody at 1:1000 dilution.

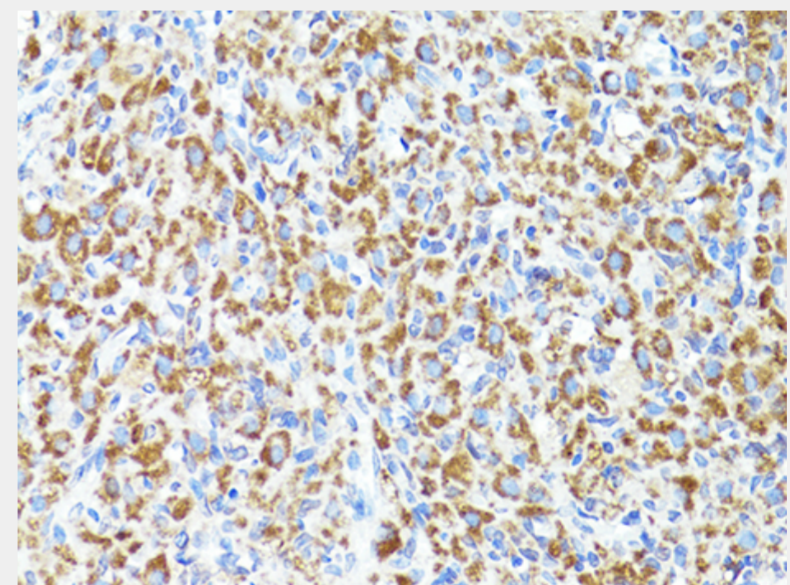
Secondary antibody: HRP Goat Anti-Rabbit IgG (H+L) at 1:10000 dilution.

Lysates/proteins: 25ug per lane.

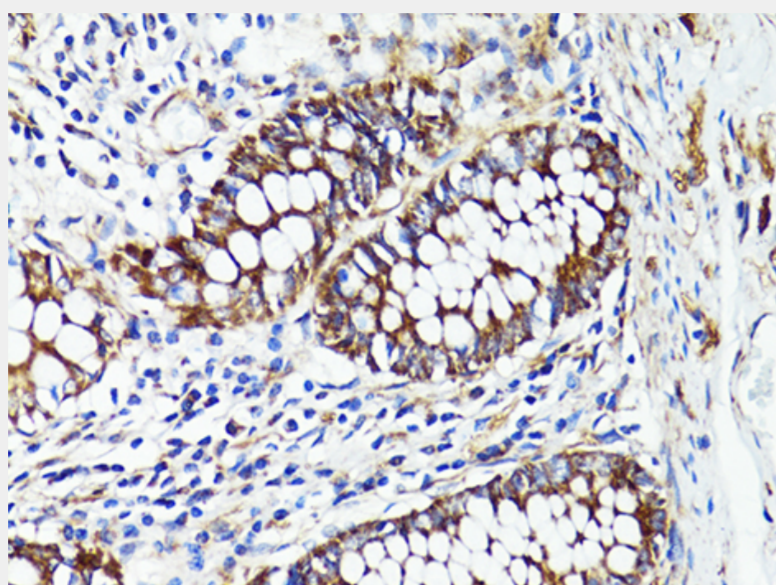
Blocking buffer: 3% nonfat dry milk in TBST.

Detection: ECL Basic Kit.

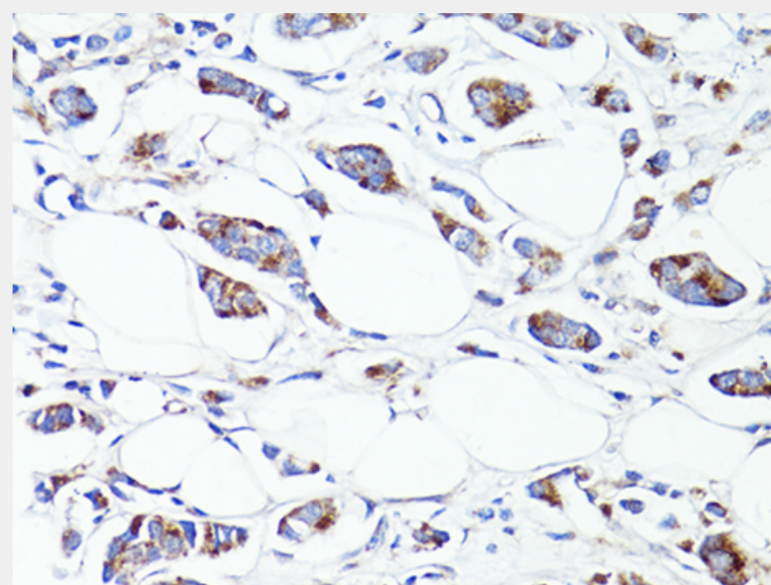
Exposure time: 30s.



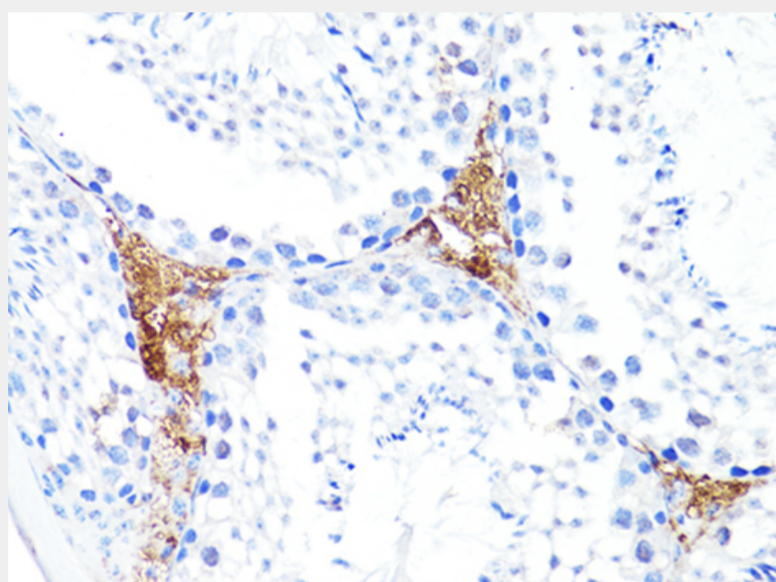
Immunohistochemistry of paraffin-embedded rat ovary using S100A10 antibody at dilution of 1:100 (40x lens).



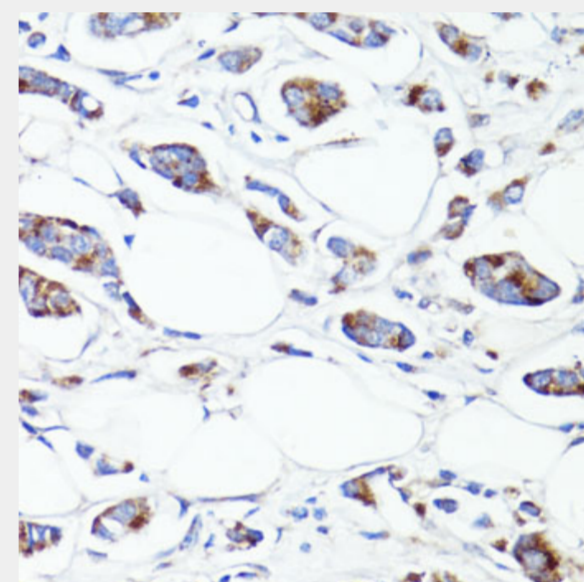
Immunohistochemistry of paraffin-embedded human colon using S100A10 antibody at dilution of 1:100 (40x lens).



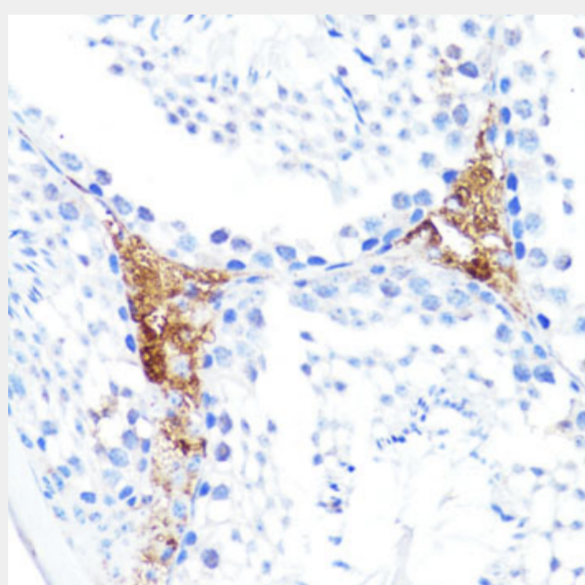
Immunohistochemistry of paraffin-embedded human breast cancer using S100A10 antibody at dilution of 1:100 (40x lens).



Immunohistochemistry of paraffin-embedded mouse testis using S100A10 antibody at dilution of 1:100 (40x lens).



Immunohistochemistry of paraffin-embedded human mammary cancer using S100A10 antibody at dilution of 1:100 (40x lens).



Immunohistochemistry of paraffin-embedded mouse leydig cells using S100A10 antibody at dilution of 1:100 (40x lens).

All products are for RESEARCH USE ONLY. Not for diagnostic & therapeutic purposes!