

# ATF6 Polyclonal Antibody

Catalog No: tcba2586



## Available Sizes

**Size:** 50ul

**Size:** 100ul

**Size:** 200ul



## Specifications

**Application:**

WB,IHC

**Research Area:**

Neuroscience,Neurodegeneration,Epigenetics,

**Species Reactivity:**

Human,Mouse,Rat

**Host Species:**

Rabbit

**Isotype:**

IgG

**Form:**

Liquid

**Storage Buffer:**

Buffer: PBS with 0.02% sodium azide, 50% glycerol, pH7.3.

**Recommended Dilution:**

WB 1:500 - 1:2000

IHC 1:50 - 1:200

**Storage Instruction:**

Store at -20°C. Avoid freeze / thaw cycles.

**Alternative Names:**

ACHM7;ATF6A

**SwissProt:**

P18850

**Gene ID:**

22926 (human);

**Calculated Molecular Weight:**

74kDa

**Purification:**

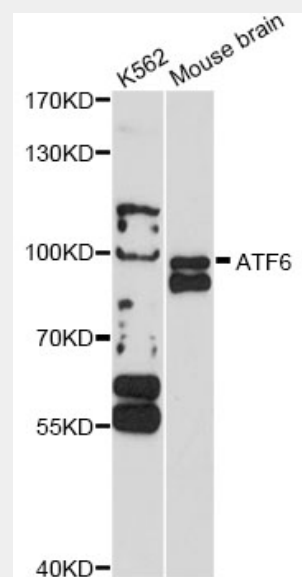
Affinity purification

**Cellular Location:**

Endoplasmic reticulum membrane,Nucleus,Single-pass type II membrane protein,

**Product Description**

This gene encodes a transcription factor that activates target genes for the unfolded protein response (UPR) during endoplasmic reticulum (ER) stress. Although it is a transcription factor, this protein is unusual in that it is synthesized as a transmembrane protein that is embedded in the ER. It functions as an ER stress sensor/transducer, and following ER stress-induced proteolysis, it functions as a nuclear transcription factor via a cis-acting ER stress response element (ERSE) that is present in the promoters of genes encoding ER chaperones. This protein has been identified as a survival factor for quiescent but not proliferative squamous carcinoma cells. There have been conflicting reports about the association of polymorphisms in this gene with diabetes in different populations, but another polymorphism has been associated with increased plasma cholesterol levels. This gene is also thought to be a potential therapeutic target for cystic fibrosis.



Western blot analysis of extracts of various cell lines, using ATF6 antibody at 1:1000 dilution.

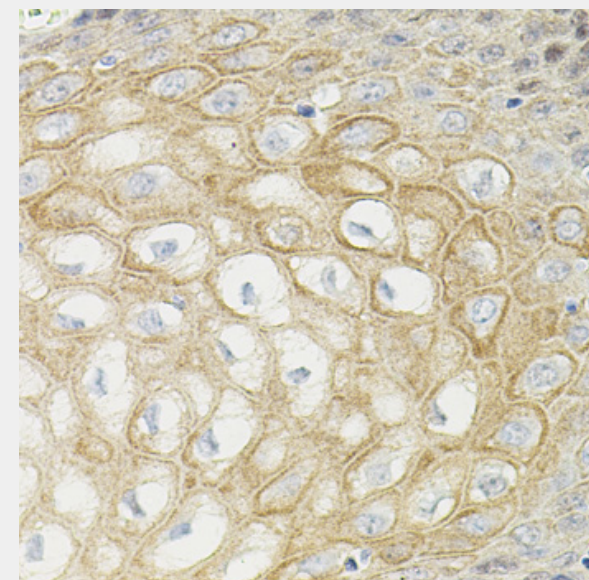
Secondary antibody: HRP Goat Anti-Rabbit IgG (H+L) at 1:10000 dilution.

Lysates/proteins: 25ug per lane.

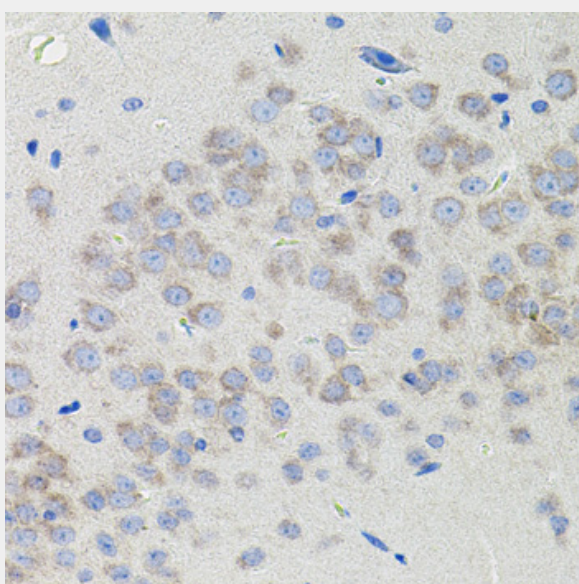
Blocking buffer: 3% nonfat dry milk in TBST.

Detection: ECL Basic Kit.

Exposure time: 60s.



Immunohistochemistry of paraffin-embedded human esophagus using ATF6 antibody (40x lens).



Immunohistochemistry of paraffin-embedded rat brain using ATF6 antibody (40x lens).

All products are for RESEARCH USE ONLY. Not for diagnostic & therapeutic purposes!